

*For Lease*

# 828 VIA ALONDRA

*8,887 SF - 17,775 SF of Industrial Building  
Space Available For Lease in Camarillo, CA*

CAMARILLO, CA 93012







BUILDING SIZE	8,887 SF - 17,775 SF
LOT SIZE	36,590 SF
BUILT	1979
POWER	600 Amps 480/277 V 3P 4W
GAS	Yes
SPRINKLERS	Yes
CLEAR HEIGHT	18'
GRADE DOORS	1 (12' x 14'), 1 (8' x 12')
PARKING	1.91/1,000 SF (25 Spaces)
ZONING	M1

*\$1.15/NNN*

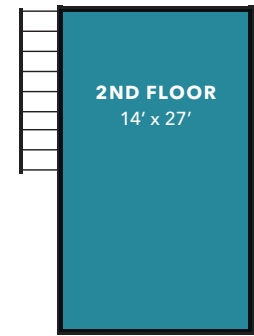
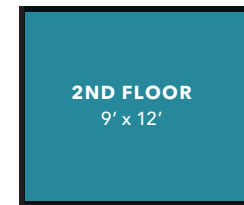
ASKING LEASE RATE (SF/MO) [CURRENT PLAN]

*\$0.12*

BELOW MARKET NNN'S

# CURRENT FLOOR PLAN

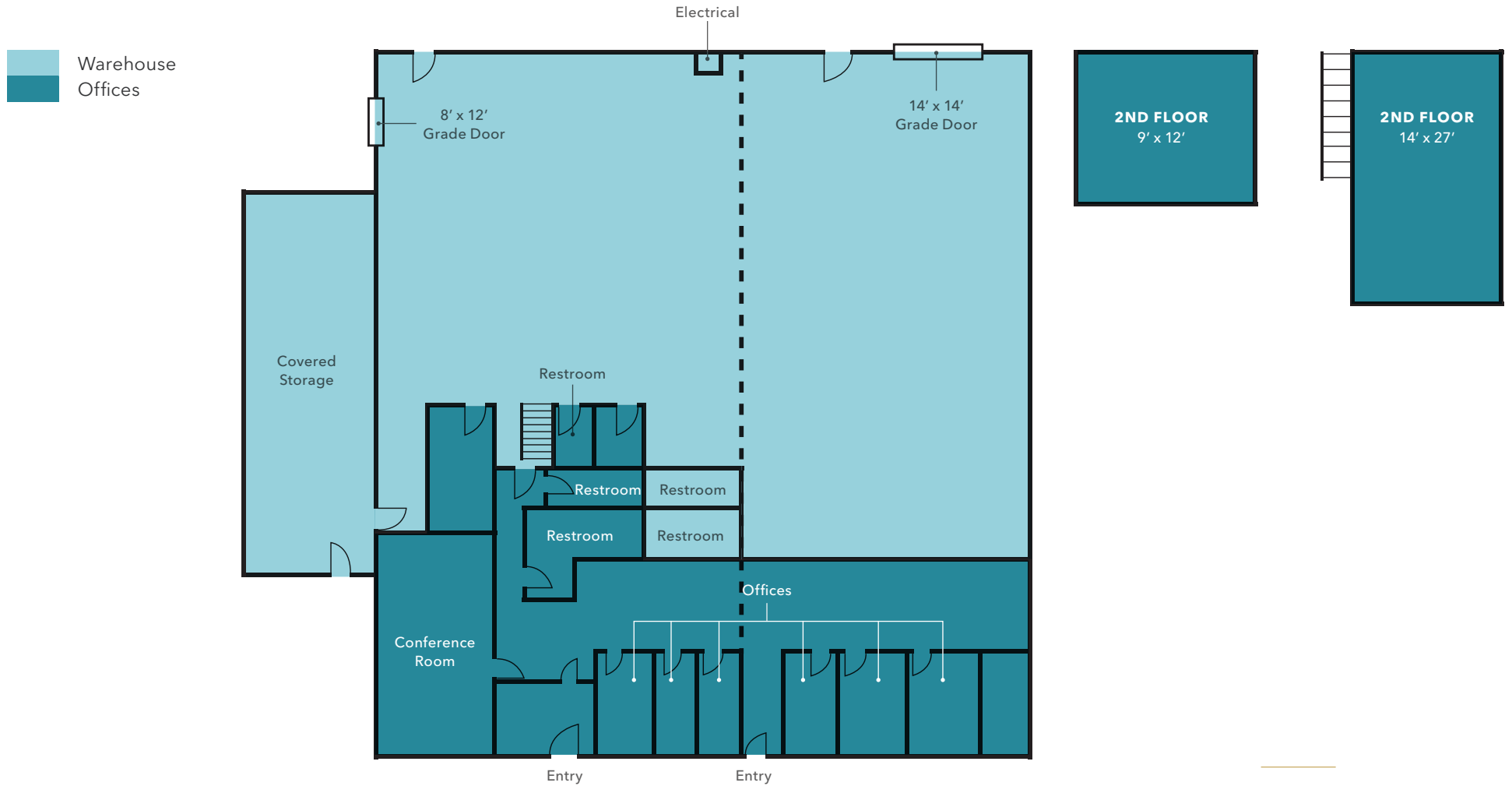
Warehouse  
Offices



\*Not to scale

*\$1.15/NNN*  
ASKING LEASE RATE (SF/MO)

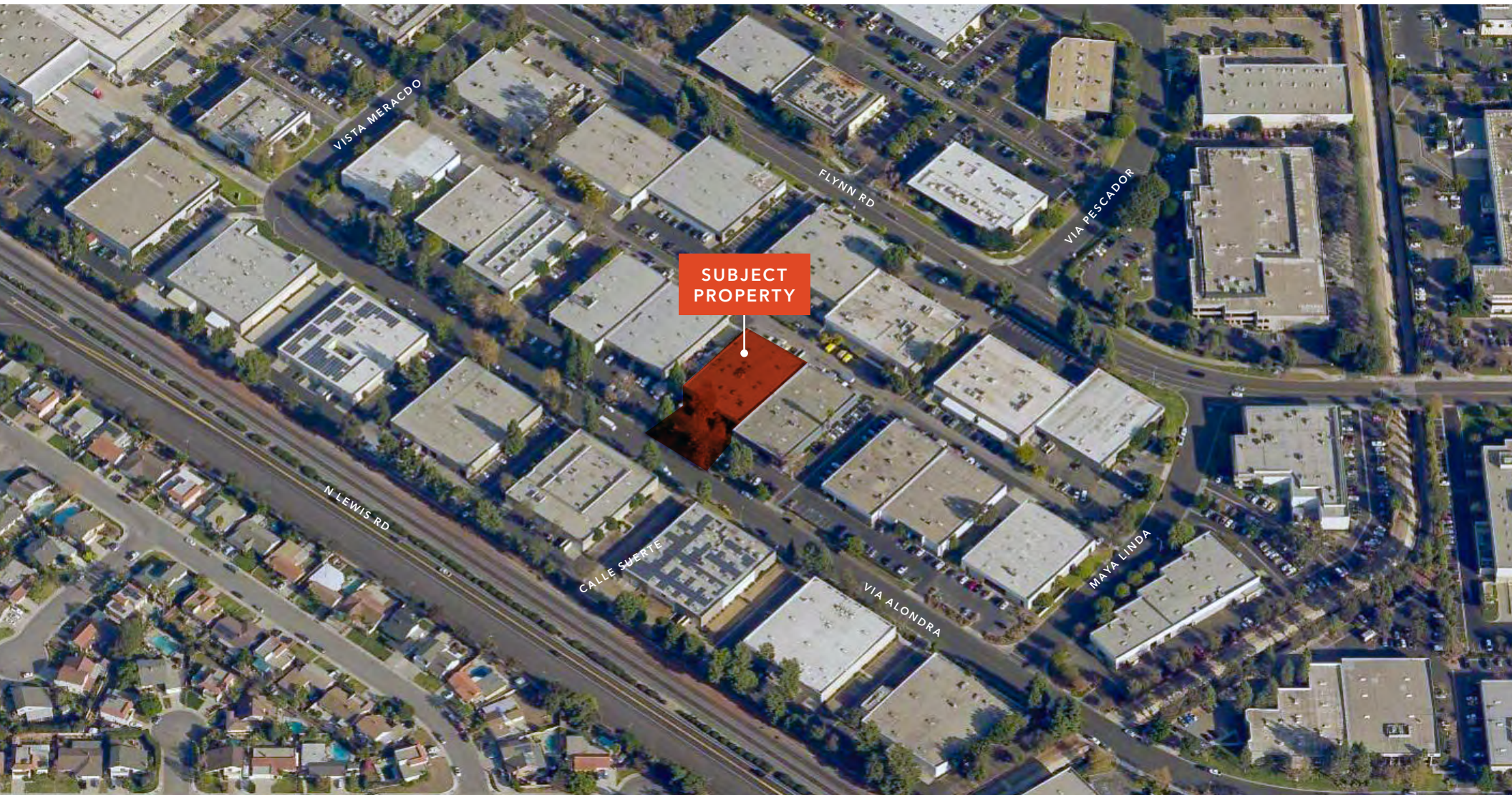
# SPEC FLOOR PLAN



\*Not to scale

**\$1.35/IG**  
ASKING LEASE RATE (SF/MO)

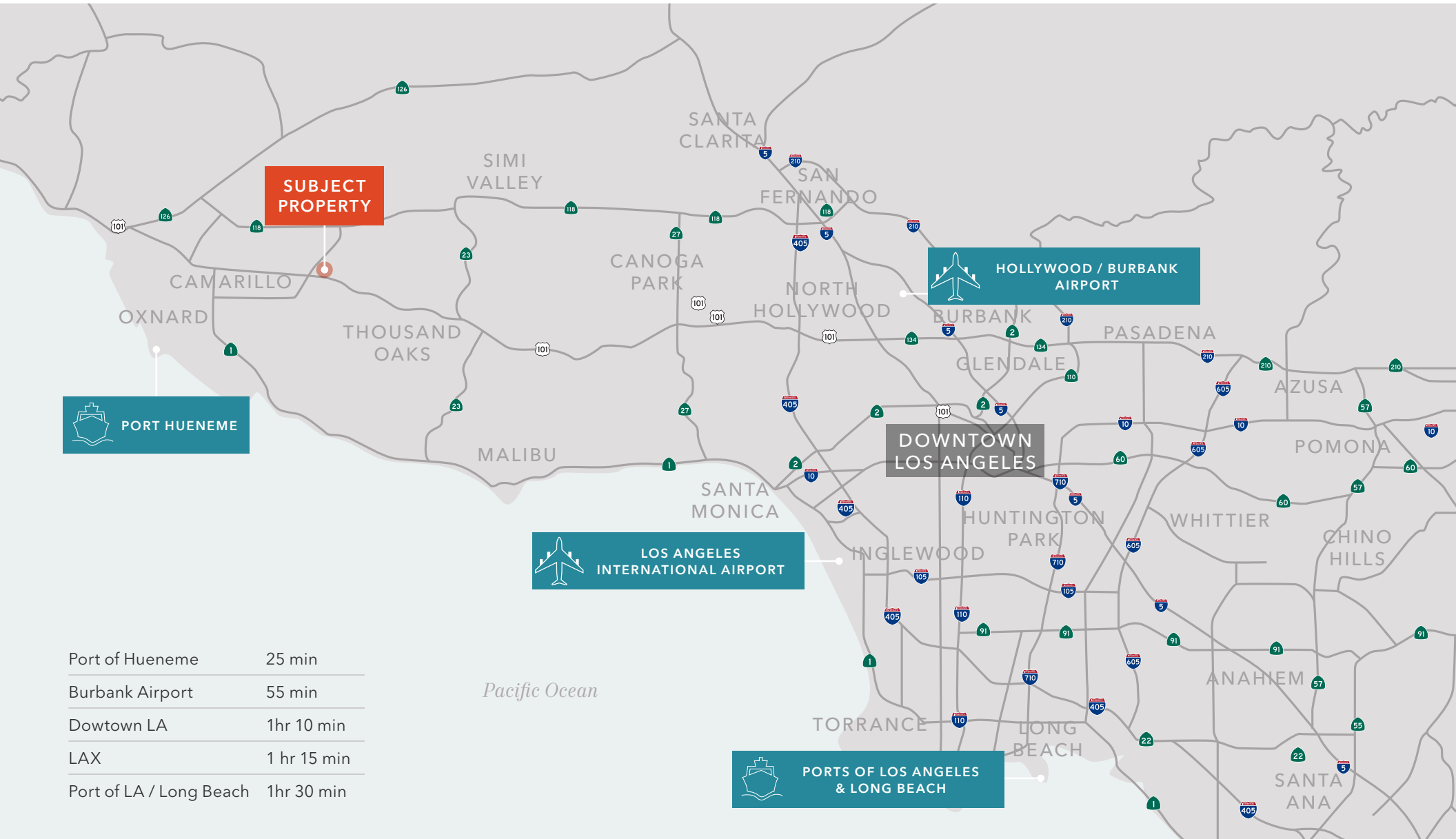












Port of Hueneme	25 min
Burbank Airport	55 min
Downtown LA	1hr 10 min
LAX	1 hr 15 min
Port of LA / Long Beach	1hr 30 min



SPEC WAREHOUSE RENOVATION





SPEC WAREHOUSE RENOVATION









828 VIA  
ALONDRA

*Exclusively leased by*

**JEFFREY M. CROCKER**

Kidder Mathews

805.626.6550

jeffrey.crocker@kidder.com

LIC N° 01457097

**BENTLEY MCKEAN, CCIM**

Kidder Mathews

805.626.7120

bentley.mckean@kidder.com

LIC N° 02080641

**KIDDER.COM**

This information supplied herein is from sources we deem reliable. It is provided without any representation, warranty, or guarantee, expressed or implied as to its accuracy. Prospective Buyer or Tenant should conduct an independent investigation and verification of all matters deemed to be material, including, but not limited to, statements of income and expenses. Consult your attorney, accountant, or other professional advisor.

