




  
320 Multifamily Units

  
248 Multifamily Units

  
272 Multifamily Units



Robert J Conlan Blvd NE  
71,400 VPD

Rear Dense Residential  
13 Acres  
Under Negotiations

Corner Gas Convenience  
3.5 Acres  
Under Negotiations

FRONT COMMERCIAL  
0.49 to 5 Acres  
AVAILABLE  
Willing to subdivide as needed

Dixie Hwy  
31,500 VPD

Kingswood Dr

Florida Ave

RAIL

**U.S. 1/Palm Bay**  
3370 Dixie Hwy NE, Palm Bay, FL, 32905  
Franklin Street Land Division  
OM Brochure

# PROPERTY DETAILS



## Property Details

- » Commercial Portion 0.49 to 5 Acres Available
- » Currently Zone PUD
- » Willing to Subdivide as Needed
- » Frontage with Beautiful Water Views

**Listing Price: Undisclosed- Call for details**

# SITE PLAN (CONCEPT 1)



# SITE PLAN (CONCEPT 2)



# MICRO DEVELOPMENT AERIAL



**Downtown Melbourne**

**Lipscomb Community Center**

248 Multifamily Units

**EASTSHORE Palm Bay**

272 Multifamily Units

**SITE**

**AQUA**

320 Multifamily Units

**LEONARDO DRS**

**FLORIDA TECH**

8,315 Students

**Melbourne Central Catholic High School**

400 Students

**Health First Aging Institute**

**Palm Bay High School**

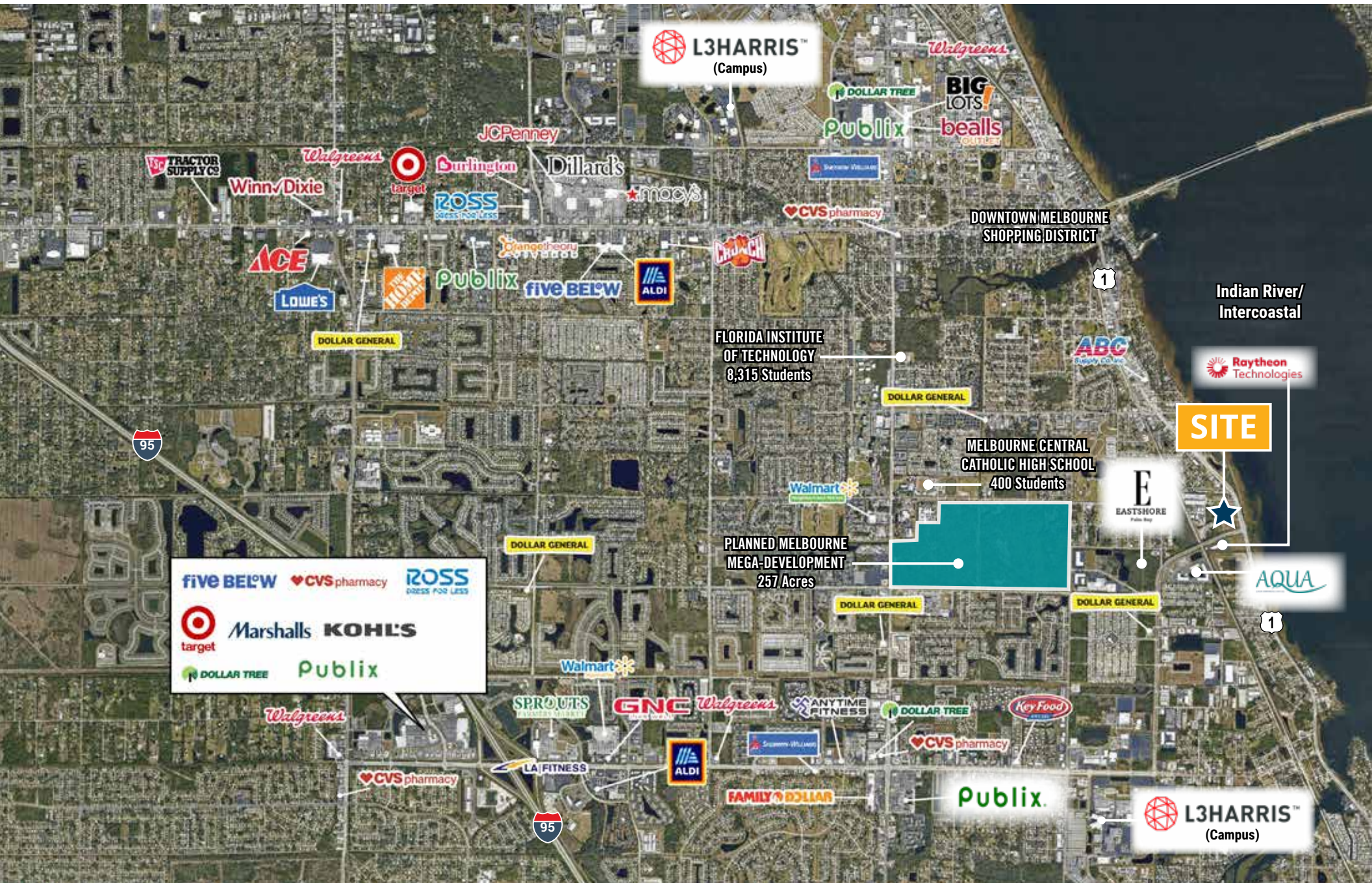
1,486 Students

**Melbourne City Center**

Melbourne City Center development will consist of single-family, apartment, retail, medical and professional, senior living, education, and entertainment on 257 acres



# MACRO AERIAL



# L3 HARRIS TECHNOLOGIES

## L3 Harris Technologies

As of 2024, in a significant boost to Palm Bay's thriving aerospace sector, L3Harris Technologies, headquartered in our city, has been awarded a substantial \$919 million contract by the Space Development Agency (SDA). This contract is a part of a larger \$2.55 billion initiative, involving other major players like Lockheed Martin and Sierra Space, to enhance the United States' missile-tracking capabilities. Additionally, L3Harris plans to expand their campus in 2025 and build a 93,000-sq.-ft. facility on a 3.8-acre site

1.7 MILES  
(7 Minute Drive)

SITE

Robert J. Conlan Blvd NE





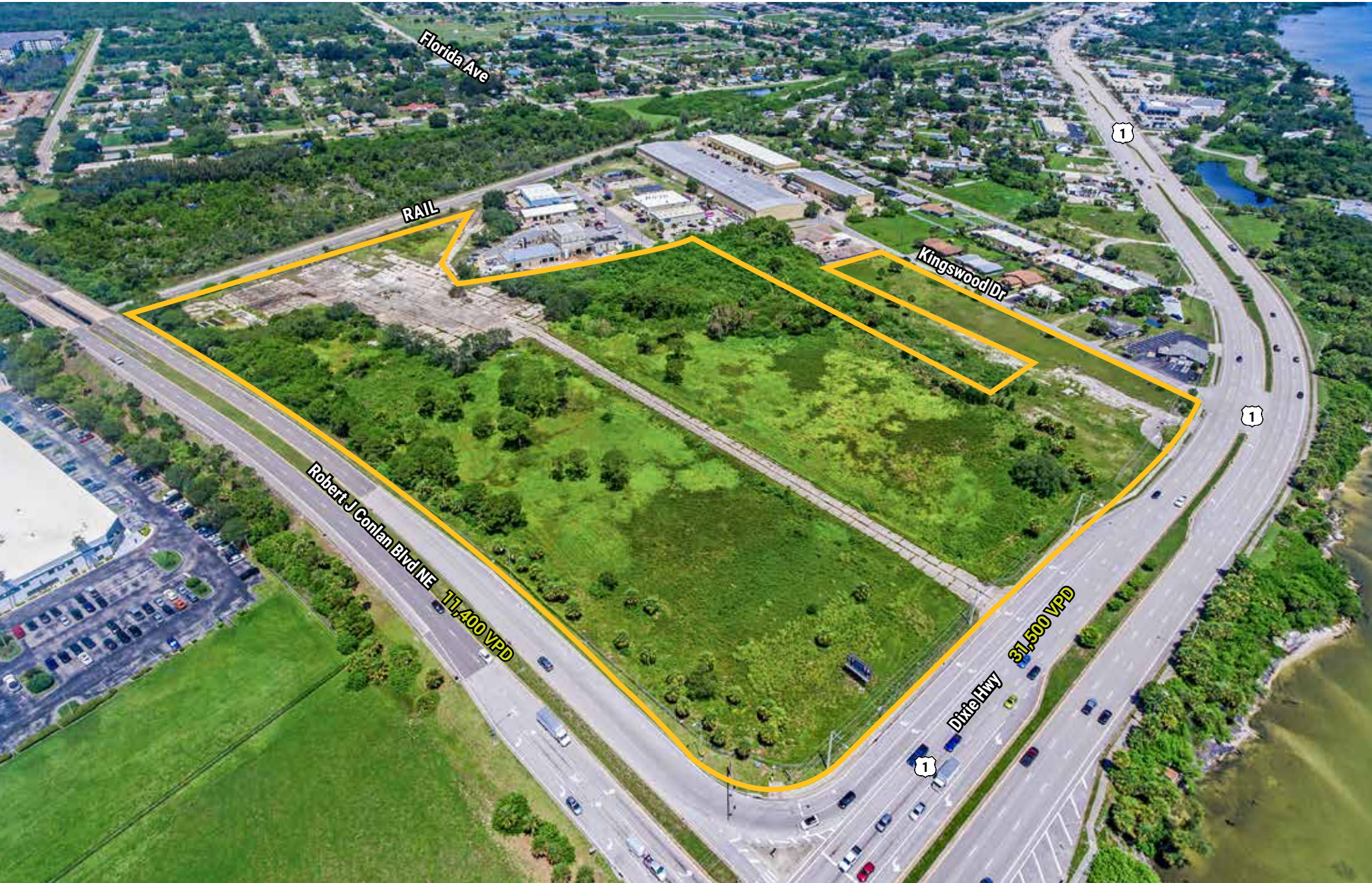
**PALM BAY**

The City of Palm Bay is approximately 88 square miles with a population approaching 120,000 residents, making it the second largest city in central Florida. Palm Bay's top industries include engineering and defense contracting with major employers such as L3Harris, Renesas Electronics, and Raytheon Technologies. The Palm Bay-Melbourne-Titusville MSA (Metropolitan Statistical Area) is ranked by USA Today as #12 in the nation with the most high-tech jobs (2023).

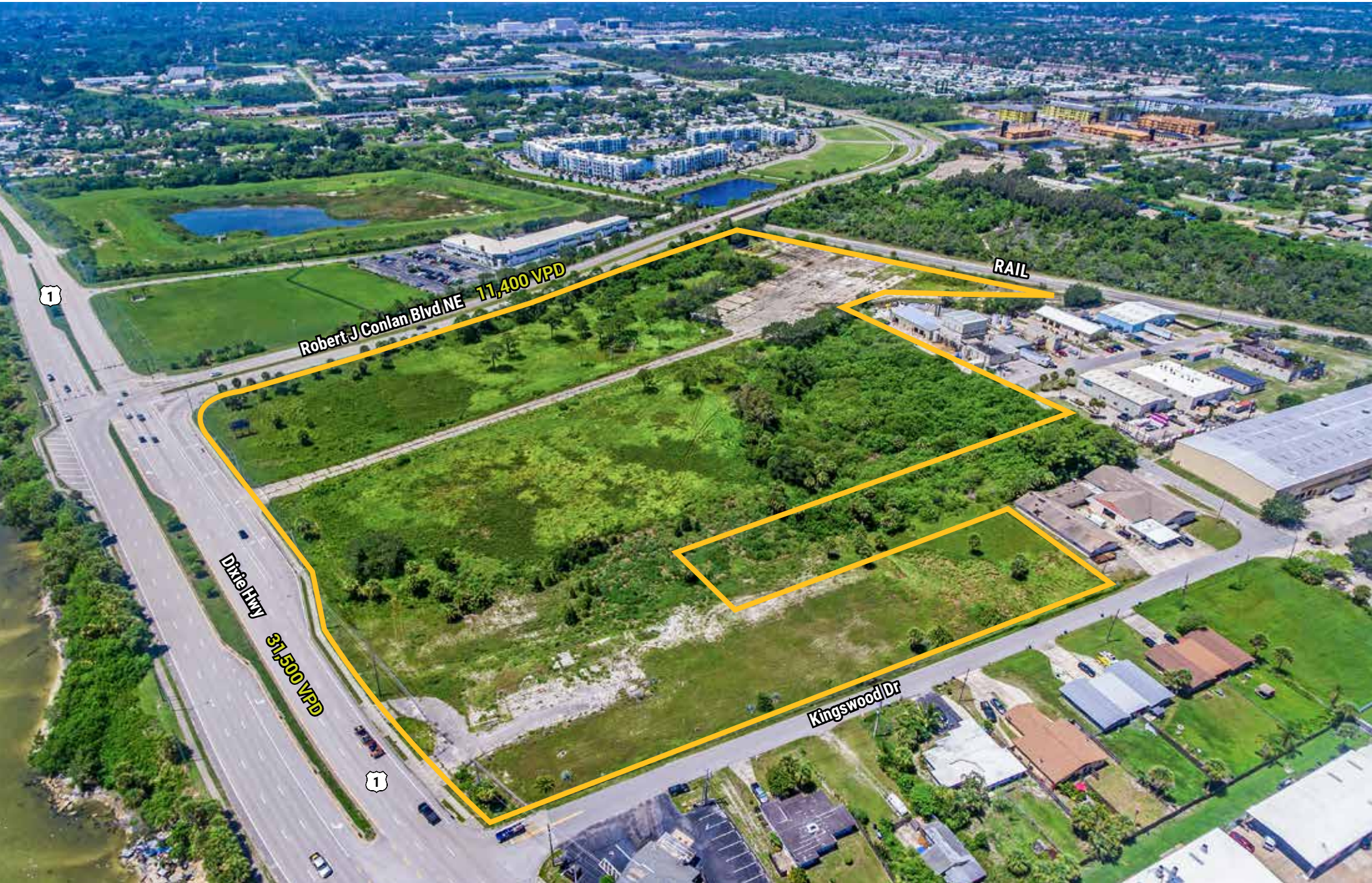




PROPERTY PHOTO



# PROPERTY PHOTO



# U.S. 1/ Palm Bay

3370 Dixie Hwy NE,  
Palm Bay, FL, 32905

- Franklin Street  
Land Division
- OM Brochure

SHAUN MAYBERRY (LEAD)

Senior Director

904.219.9035

shaun.mayberry@franklinst.com

GIOVANNY CASTANO

Associate

904.364.2091

giovanny.castano@franklinst.com

KEITH WOOD

Senior Analyst

904.364.0952

keith.wood@franklinst.com

