

N 00°50'E TO I.P.F. ON APPROX. LAND LOT LINE  
754.80'  
OF LAND LOTS 55 AND 74.

C.M.  
N 00°12'E 552.97'

SURVEYOR:  
HUBERT LOVELL  
GA. REG. NO. 1553  
CLARKESVILLE, GA.

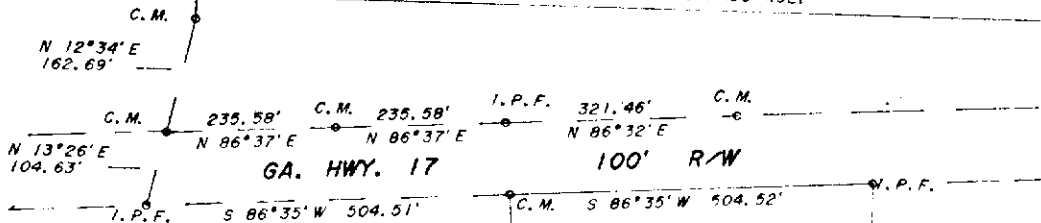
MAP PREPARED FOR  
**THOMAS N. LUMSDEN**  
WHITE COUNTY  
GEORGIA

DATE: 07/18/91  
REVISED:  
LAND LOT: 74  
DISTRICT: 3RD.  
COUNTY OF WHITE  
FILE # 1226F  
FIELD BOOK # 354  
INSTRUMENTS USED:  
WILD THEODOLITE  
TOPCON E.D.M.

CERTIFICATION:  
IN MY OPINION, THIS PLAT  
IS A TRUE REPRESENTATION  
OF THE LAND PLATTED AND  
HAS BEEN PREPARED IN  
CONFORMITY WITH MINIMUM  
STANDARDS AND REQUIREMENTS  
OF LAW.

SYMBOLS:  
I.P.F. = IRON PIN FOUND/SET  
C.M. = CONCRETE MONUMENT

ERROR OF CLOSURE = 1" - 12,500'  
ADJUSTED USING COMPASS RULE



16.86 ACRES

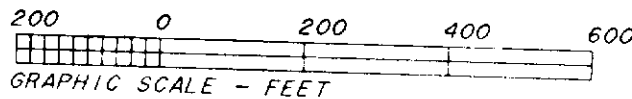
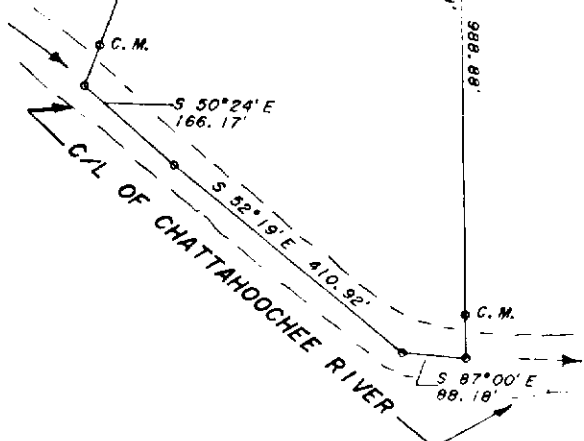
WALTER B. LUMSDEN

SOUTER

THIS PLAT DOES NOT REQUIRE APPROVAL FROM  
THE WHITE COUNTY PLANNING COMMISSION  
RELATIVE TO THE PROVISIONS OF CODE  
SECTION 15-6-67 OF THE OFFICIAL CODE OF  
GEORGIA AS AMENDED 1990. (SENATE BILL NO. 735)

91 JUL 31 PM 1:04  
BOOK 25 PAGE 225  
CAROL JACKSON, CLERK  
WHITE COUNTY, GA.

MAP CHECK: 1" = 30,120'



Hubert Lovell