



2808-2820 The Plaza

Charlotte, North Carolina 28052



Available for Lease, BTS, Ground Lease

+/- 7,000 SF Multi-Tenant Retail Building

Property Overview

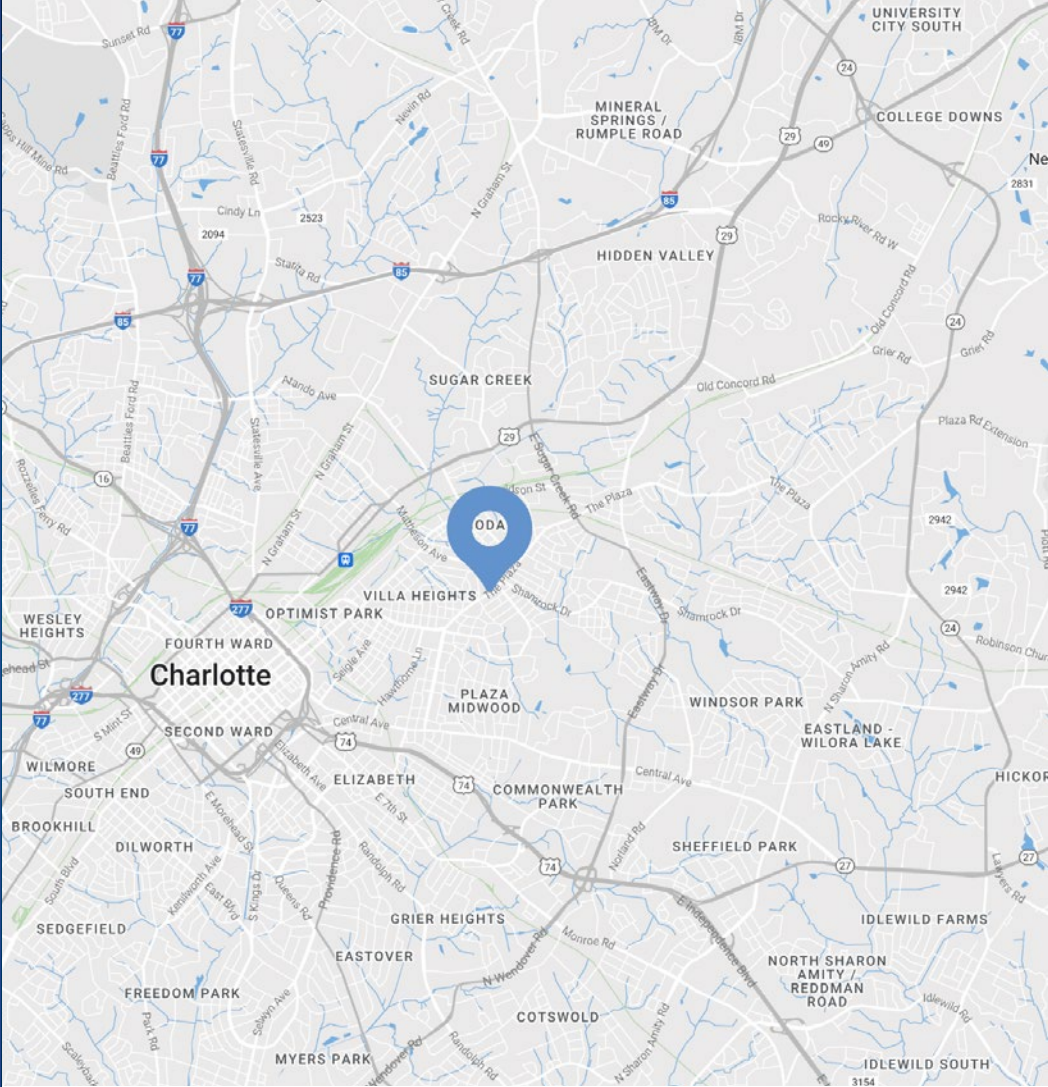
2808-2820 The Plaza

Available for Lease, BTS, Ground Lease

One story multi-tenant retail building available on The Plaza in Charlotte's Plaza Hills, between NoDa and Plaza Midwood. The building will be new construction delivered as cold dark shell, one story with +/- 7,000 SF. The site consists of 3 parcels that equal 0.73 acres. With 2,500+ multi-family units constructed/under construction within 2-3 minute drive from the site, an excellent opportunity for general retail, office and medical users in a growing area with strong demographics.

Property Details

Address	2808-2820 The Plaza Charlotte, NC 28205
Availability	+/- 7,000 SF Multi-Tenant Retail Building Available for Lease, BTS, Ground Lease
Parcel ID	09501130, 09501131, 09501132
Acreage	+/- 0.73 AC
Use	Retail/Office/Medical
Zoning	CG Charlotte Future 2040 Policy Neighborhood Center
Parking	Ample parking - 31 spaces
Access	Easy access to Uptown, Plaza Midwood, and NoDa
Traffic Counts	The Plaza 30,000+ VPD
Lease Rate	Call for Leasing Details



Demographics

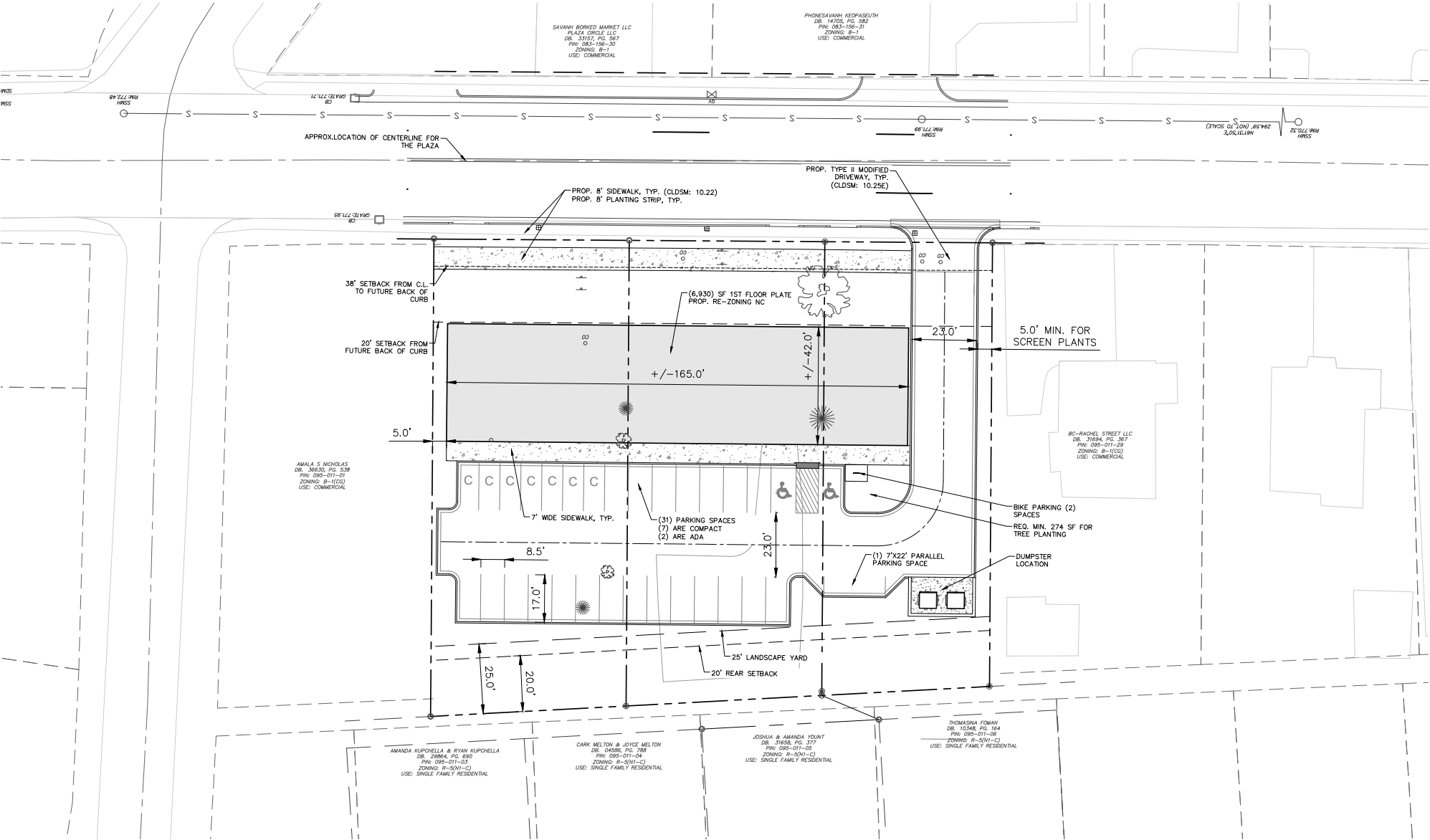
RADIUS	1 MILE	3 MILE	5 MILE
2024 Population	15,452	117,575	293,264
Avg. Household Income	\$140,675	\$113,156	\$115,110
Median Household Income	\$98,680	\$73,102	\$71,119
Households	7,832	56,742	130,744
Daytime Employees	3,152	113,708	198,869

Market Overview





Site Plan





Contact for Details

John Hadley

(704) 373 - 9797

jhadley@thenicholscompany.com



Website

www.TheNicholsCompany.com

Phone

Office (704) 373-9797

Fax (704) 373-9798

Address

1204 Central Avenue, Suite 201

Charlotte, NC 28204

This information has been obtained from sources believed to be reliable. While we do not doubt its accuracy, we have not verified it and make no guarantee, warranty or representation to independently confirm its accuracy and completeness.