

welltower



# PHYSICIANS MEDICAL CENTER OF DALLAS

---



**715 GREENVILLE AVENUE  
DALLAS, TX 75231**

**4,194 RSF MEDICAL OFFICE SPACE AVAILABLE**

# PROPERTY HIGHLIGHTS

---

- Easy access and drive-up parking for patients
- High-visibility, high traffic location
- Adjacent to Texas Health Dallas Hospital Campus
- Parking 5.43/1,000

## KEY TENANTS

- Texas Surgery Institute
- Texas Orthopedic Associates
- ENT
- Plastics
- Dentistry
- Pain Management

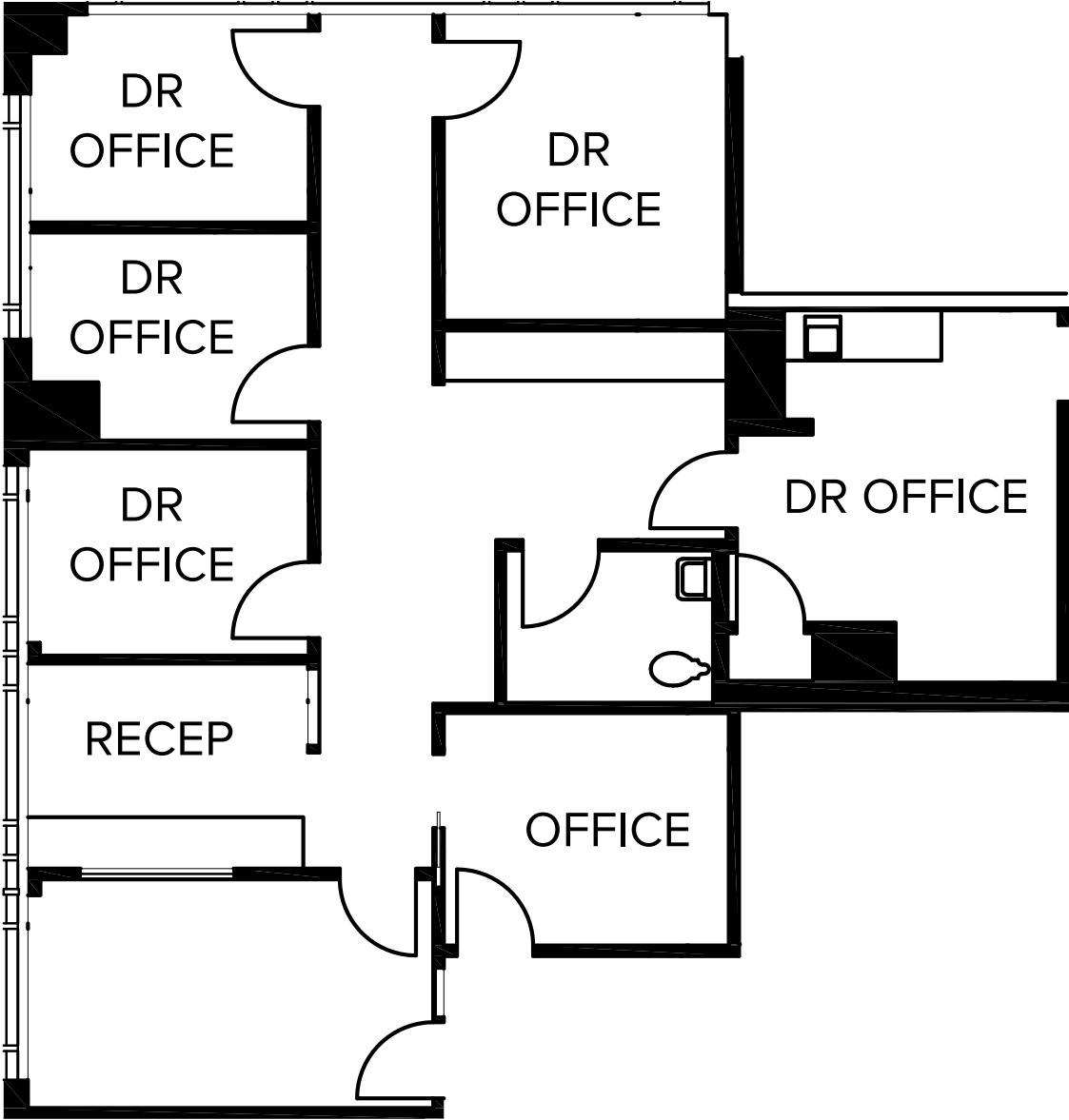
welltower





# FLOOR PLAN

SUITE 230 | 1,560 RSF

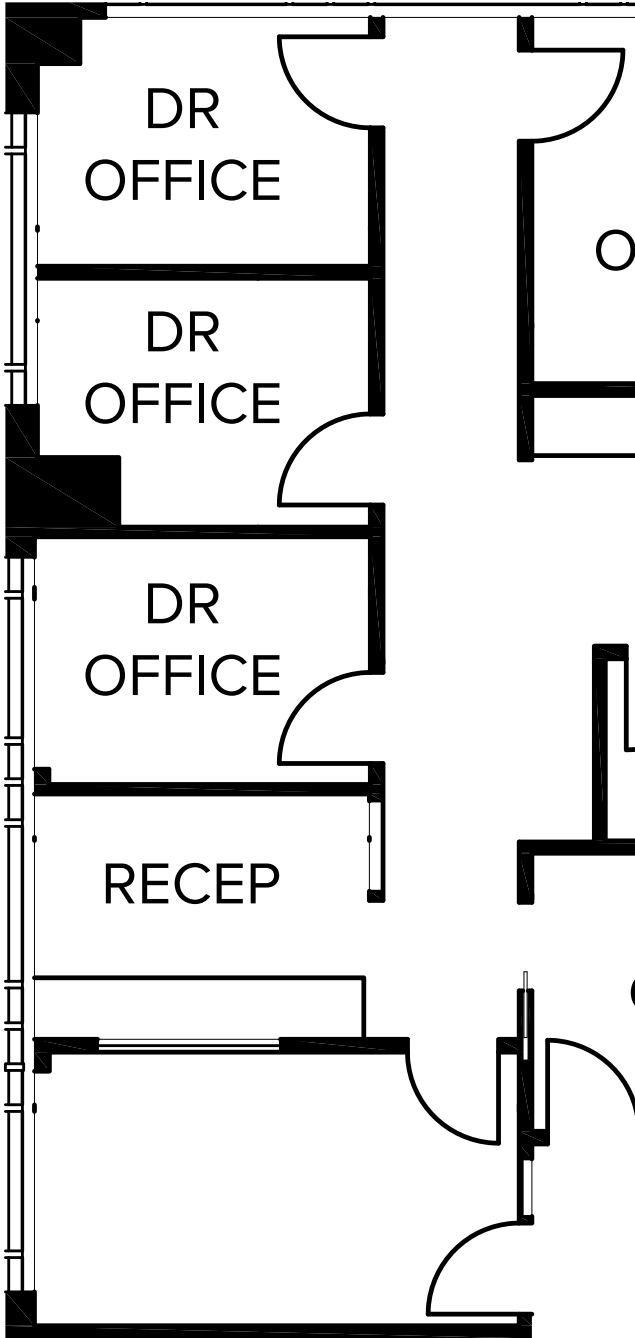


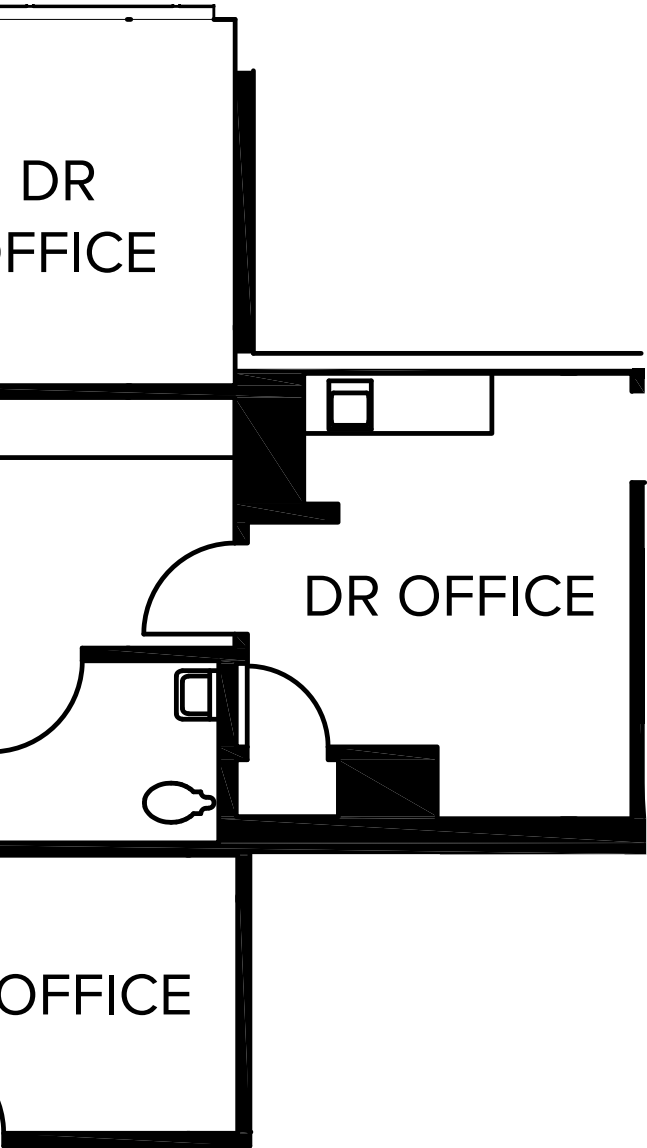


# FLOOR PLAN

SUITE 230 | 1,560 RSF

---

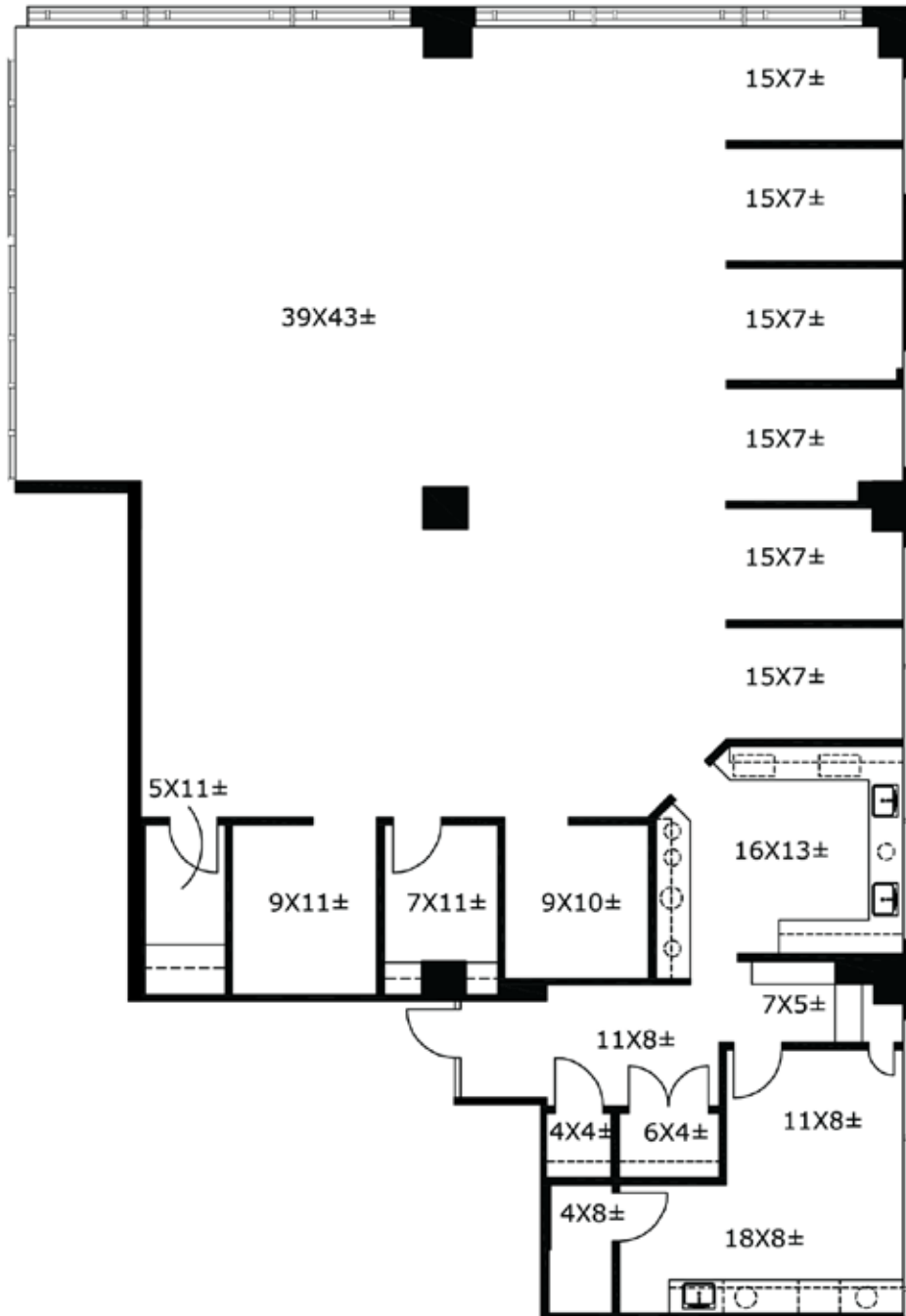




# FLOOR PLAN

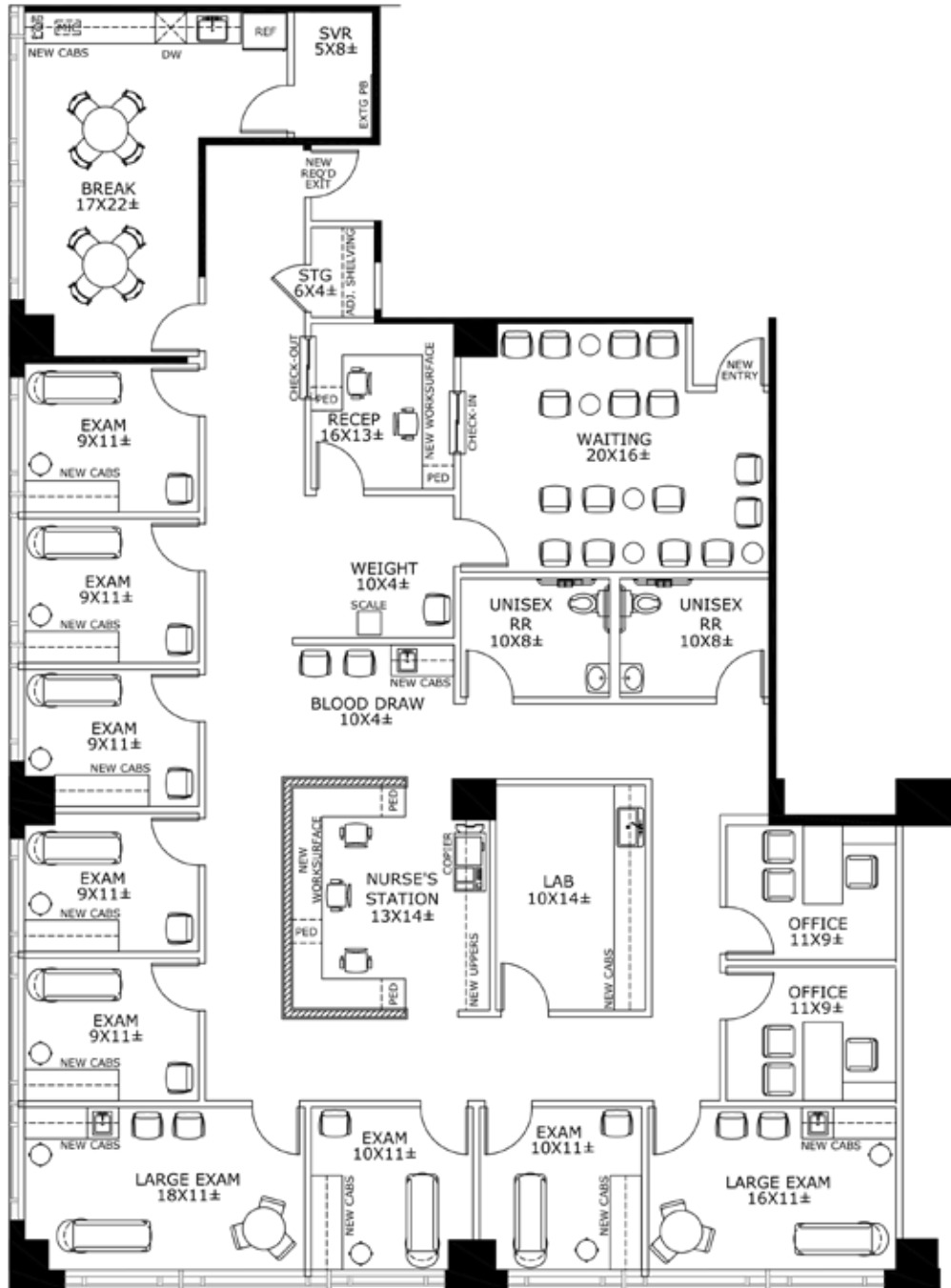
SUITE 300 | 4,194 RSF - CURRENT CONDITION

---





# SUITE 300 | 4,194 RSF - CONCEPTUAL PLAN



# AREA MEDICAL FACILITIES



**FIRST BAPTIST**  
MEDICAL CENTER

**MD**  
Medical Group

THE **C** CLINIC

**ADVANCED DALLAS**  
HOSPITAL & CLINICS

**Texas Health**  
Women's Care

**PRESBYTERIAN**  
Healthcare Foundation

**MEDTOPIA MEDICAL CLINIC**  
Primary Care, Redefined

**Texas Health**  
Family Care

**ern**  
center

**Texas Health**  
Presbyterian Hospital®  
DALLAS

**NIC**

**7115**  
Greenville Ave

# LEASING TEAM

**ADDRESS:** 7115 GREENVILLE AVENUE DALLAS, TX 75231

**ETHAN GARNER**

214.438.6515

Ethan.Garner@jll.com

**AUSTIN BARRETT**

214.438.6420

Austin.Barrett@jll.com



Although information has been obtained from sources deemed reliable, JLL does not make any guarantees, warranties or representations, express or implied, as to the completeness or accuracy as to the information contained herein. Any projections, opinions, assumptions or estimates used are for example only. There may be differences between projected and actual results, and those differences may be material. JLL does not accept any liability for any loss or damage suffered by any party resulting from reliance on this information. If the recipient of this information has signed a confidentiality agreement with JLL regarding this matter, this information is subject to the terms of that agreement.

©2024 Jones Lang LaSalle Brokerage, Inc. All rights reserved.