



LEASE

7749 E M-36

**7749 E MI 36
Hamburg, MI 48189**

Discover this premier retail flex property for lease at 7749 E M-36, Hamburg, MI 48189. Spanning nearly 23,000 square feet, this expansive space is strategically located in a vibrant, fast-growing area, offering high visibility and accessibility. Positioned along a major corridor and surrounded by a thriving community, enhancing its appeal for diverse retail or service business operations. The flex design offers private entrances and large overhead doors with each unit. The property is equipped with modern amenities to support a variety of business needs, ensuring a seamless transition for tenants. Secure your foothold in this dynamic property today!

Call for Rate

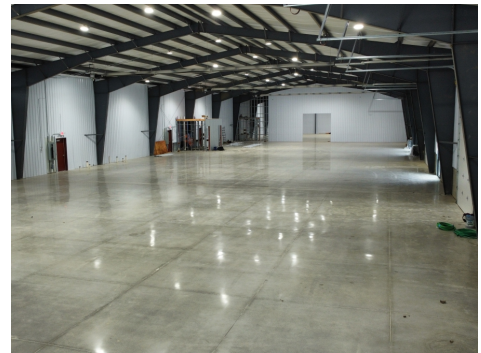
***Rental Area:
22,360 Sq. Ft.
Year Built: 2025***

Contact:

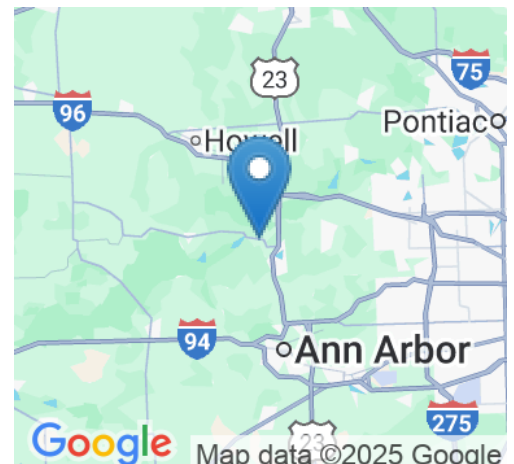
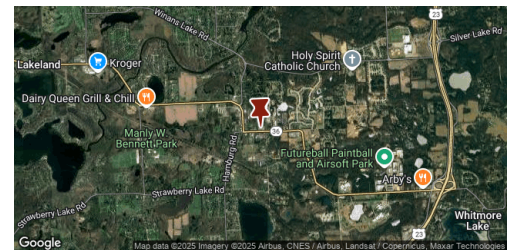
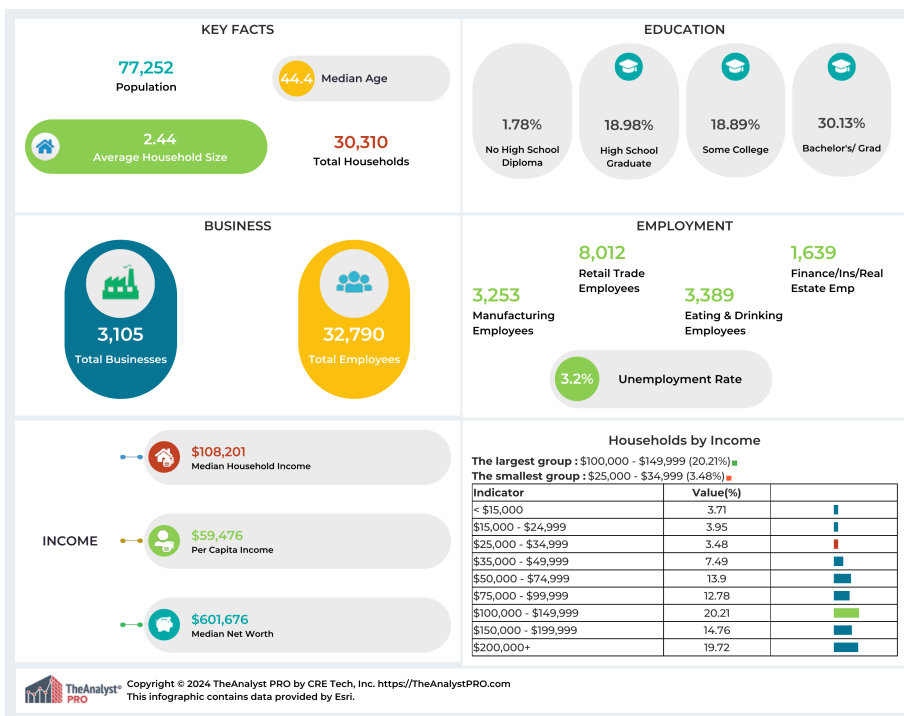
313.312.5764

TREVOR BROOKS

License: 6501374378
t.brooks@kwcommercial.com



SM



This information has been obtained from sources believed reliable. We have not verified it and make no guarantee, warranty or representation about it. Any projections, opinions, assumptions or estimates used are for example only and do not represent the current or future performance of the property. You and your advisors should conduct a careful, independent investigation of the property to determine to your satisfaction the suitability of the property for your needs. Photos herein are the property of their respective owners and use of these images without the express written consent of the owner is prohibited.

Contact:

313.312.5764

TREVOR BROOKS

License: 6501374378

t.brooks@kwcommercial.com