



NOW LEASING

UNION PARK

4

6975 UNION PARK AVENUE
SALT LAKE CITY, UTAH



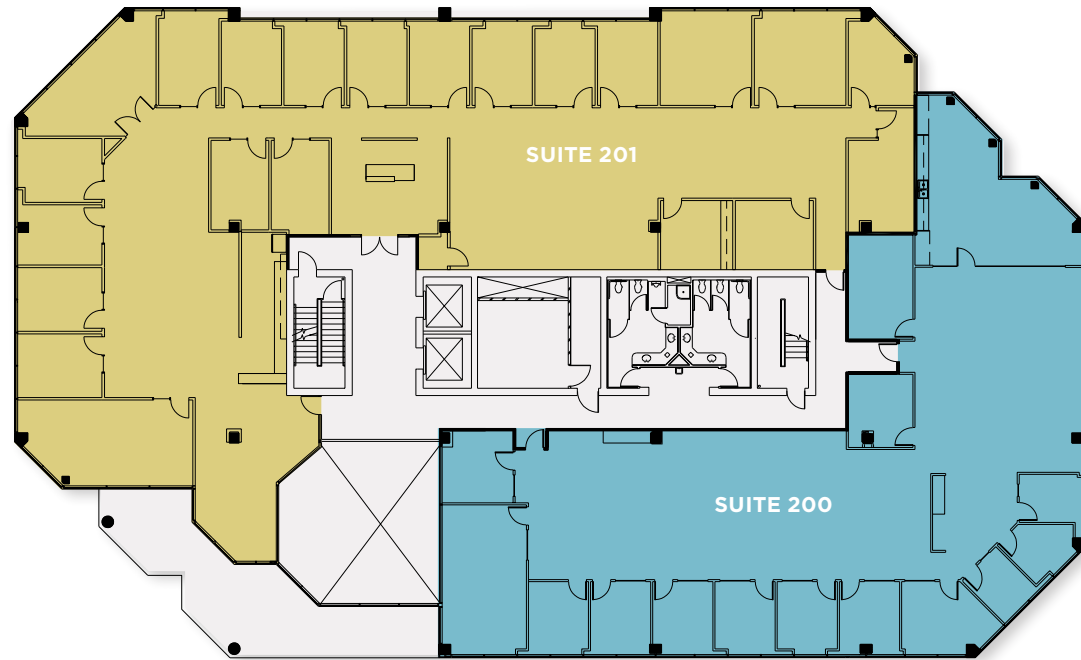
STANTON ROAD
CAPITAL

UNION PARK 4

\$28.50

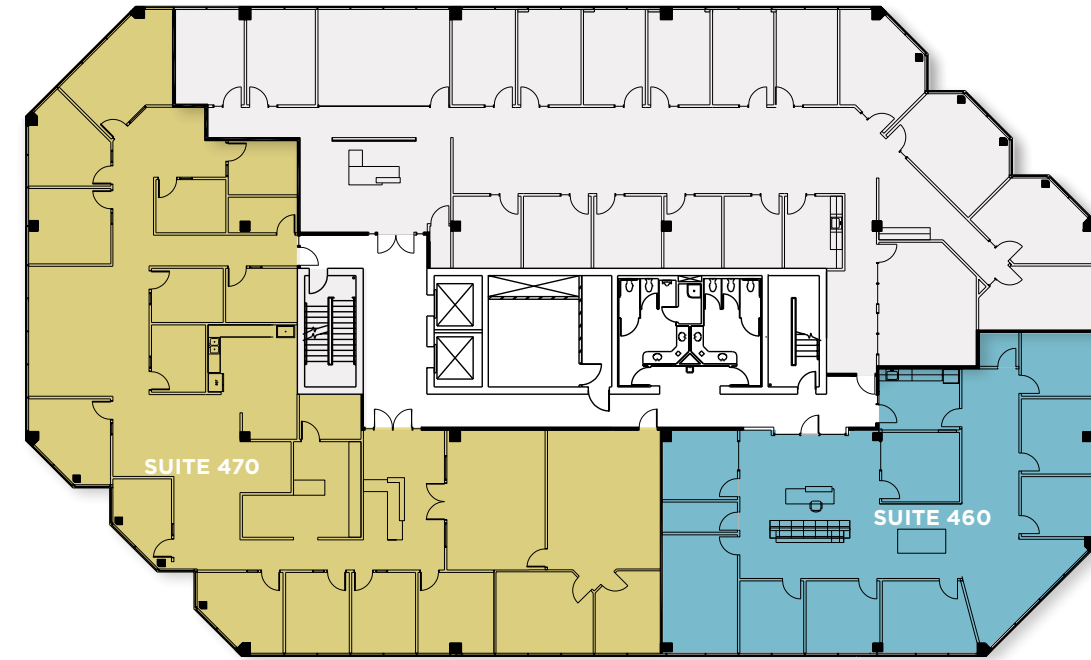
PSF, FULL SERVICE

CLASS A
FINISHES



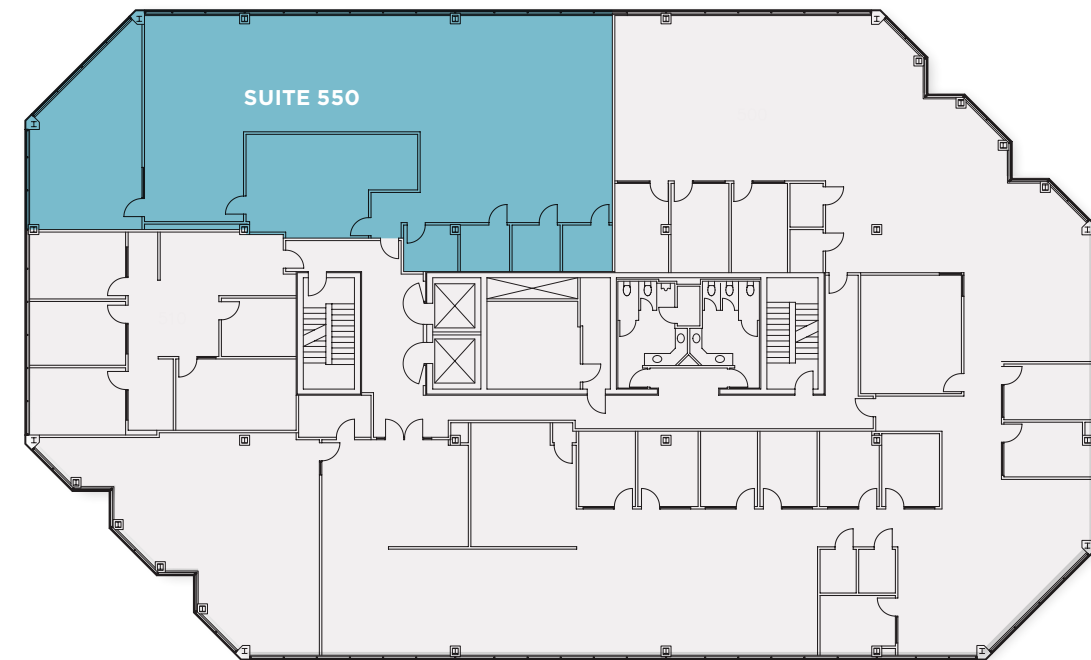
SECOND FLOOR

Floor	Suite	Size	Available
2	200	6,342 RSF	April 1, 2025
2	201	9,560 RSF	Immediately



FOURTH FLOOR

Floor	Suite	Size	Available
4	460	3,377 RSF	Immediately
4	470	6,814 RSF	April 1, 2025



FIFTH FLOOR

Floor	Suite	Size	Available
5	550	3,575 RSF	February 1, 2025



ADDITIONAL
INFORMATION

LOBBY



SUITE 460



Each **UNION PARK** building has a two-story open atrium lobby. The buildings have stunning views of the Salt Lake Valley. Covered parking is available and the buildings are equipped with high-speed fiber optic network and Internet connectivity, as well as centralized security and surveillance.



UNION PARK 4



SURROUNDING AREA

Conveniently located in the center of Salt Lake, within minutes of fine residential neighborhoods as well as the major freeway system, Fashion Place Mall and numerous restaurants and lodging.

Dana Baird, ccim
Executive Managing Director
+1 801 303 5526
dana.baird@cushwake.com

Mike Richmond
Executive Managing Director
+1 801 303 5434
mike.richmond@cushwake.com

SRC
STANTON ROAD
CAPITAL

CUSHMAN & WAKEFIELD
170 South Main Street Suite 1600
Salt Lake City, UT
+1 801 322 2000 cushmanwakefield.com