

**9760 WOODWARD AVENUE
DETROIT, MICHIGAN**

**OFFICE/RETAIL FOR SALE
23,137 Square Feet Available**



**SIGNATURE
ASSOCIATES**
KNOW SIGNATURE | KNOW RESULTS



PROPERTY FEATURES

- 23,137 square feet available
- Rare opportunity on Woodward Avenue in Boston Edison Neighborhood
- Previously used as a church
- Fenced parking lot
- 2-story building
- Sale Price: \$775,000 (\$33.50/sq.ft.)



For more information, please contact:

JOE STACK
(248) 359 0615
jstack@signatureassociates.com

CHRIS MONSOUR
(248) 948 0107
cmonsour@signatureassociates.com

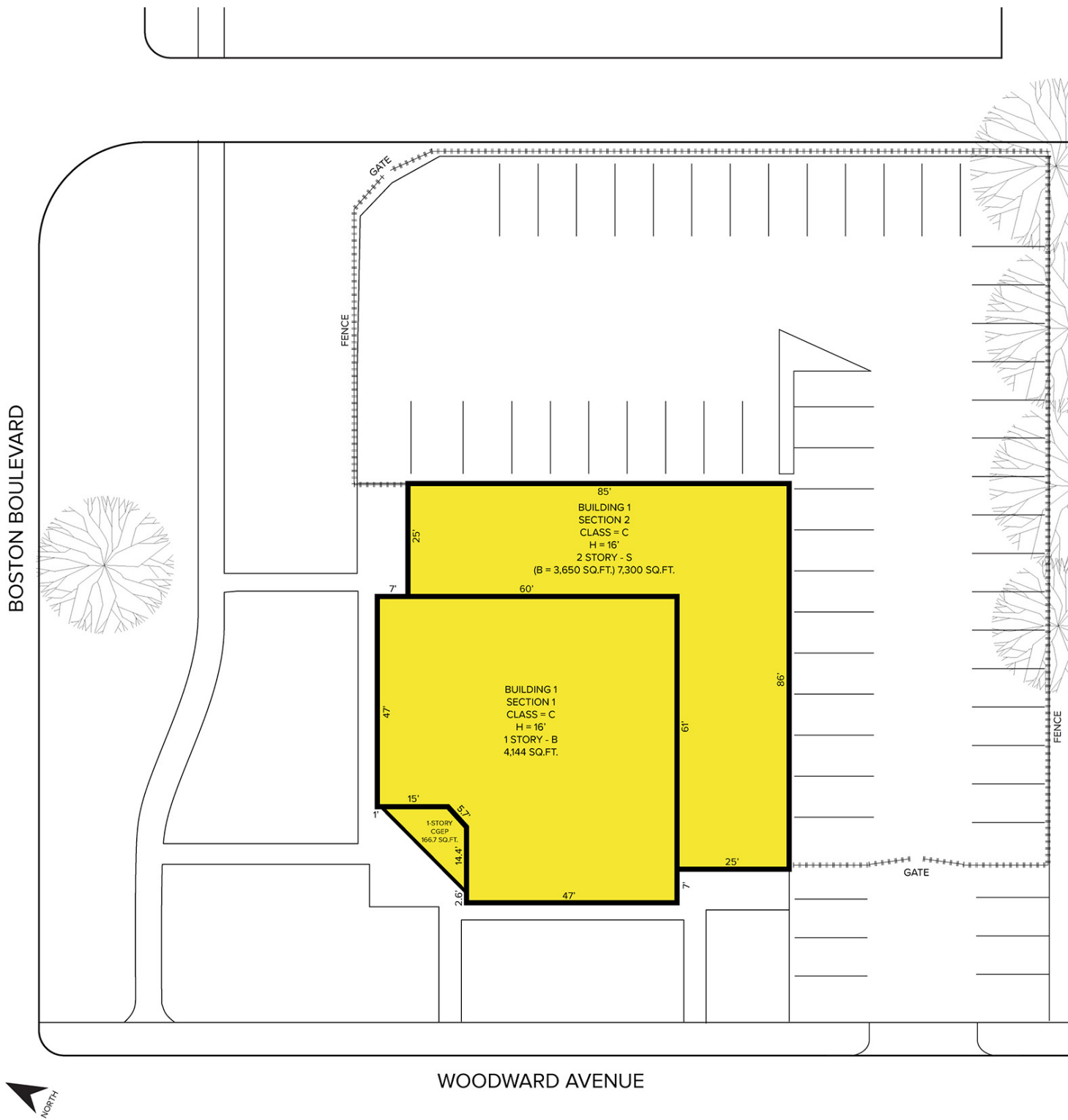
SIGNATURE ASSOCIATES
One Towne Square, Suite 1200
Southfield, MI 48076
www.signatureassociates.com

Information is subject to verification and no liability for errors or omissions is assumed. Price is subject to change and listing withdrawal.

9760 Woodward Avenue – Detroit, MI
Office/Retail For Sale

23,137
Square Feet
AVAILABLE

Site Plan



For more information, please contact:

JOE STACK
(248) 359 0615
jstack@signatureassociates.com

CHRIS MONSOUR
(248) 948 0107
cmonsour@signatureassociates.com

SIGNATURE ASSOCIATES
One Towne Square, Suite 1200
Southfield, MI 48076
www.signatureassociates.com

9760 Woodward Avenue – Detroit, MI

Office/Retail For Sale

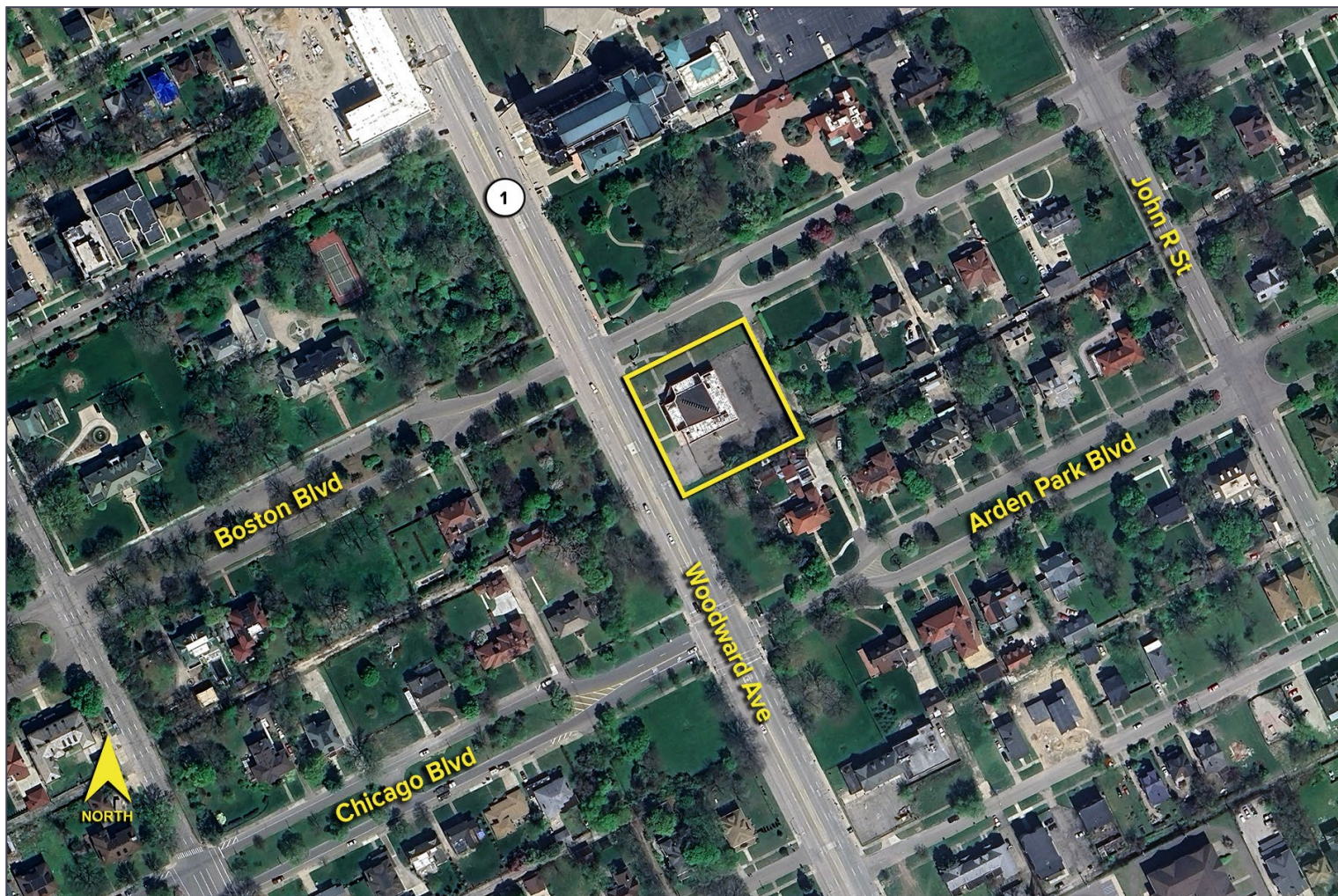
23,137
Square Feet
AVAILABLE

DEMOGRAPHICS

	POPULATION	MED. HH INCOME
1 MILE	13,985	\$45,106
3 MILE	142,994	\$40,345
5 MILE	374,993	\$45,104

TRAFFIC COUNTS (TWO-WAY)

22,459	Woodward Ave. S of Chicago Blvd.
21,795	Woodward Ave. N of Chicago Blvd.
3,685	Chicago Blvd. W of Woodward Ave.
1,011	Chicago Blvd. E of Woodward Ave.



For more information, please contact:

JOE STACK
(248) 359 0615
jstack@signatureassociates.com

CHRIS MONSOUR
(248) 948 0107
cmonsour@signatureassociates.com

SIGNATURE ASSOCIATES
One Towne Square, Suite 1200
Southfield, MI 48076
www.signatureassociates.com