



7158 Progress Way, Delta, BC

For lease

36,145 SF of industrial warehouse and office space with 3 dock doors and 1 grade loading

Property Highlights



Loading

3 (8' x 10') - Dock doors with automatic levelers
1 (12' x 14') - Large grade loading door



Ceiling Height

25' clear in warehouse



Parking

25 parking stalls



Electrical Service

3-phase fused at 600 amps 347/600 volts



Lighting

Landlord upgrading to LED lighting



Available Area

36,145 SF

Zoning

I2 - Medium Impact Industrial

Availability

Immediate

Lease Rate

\$18.95 PSF

Operating Costs

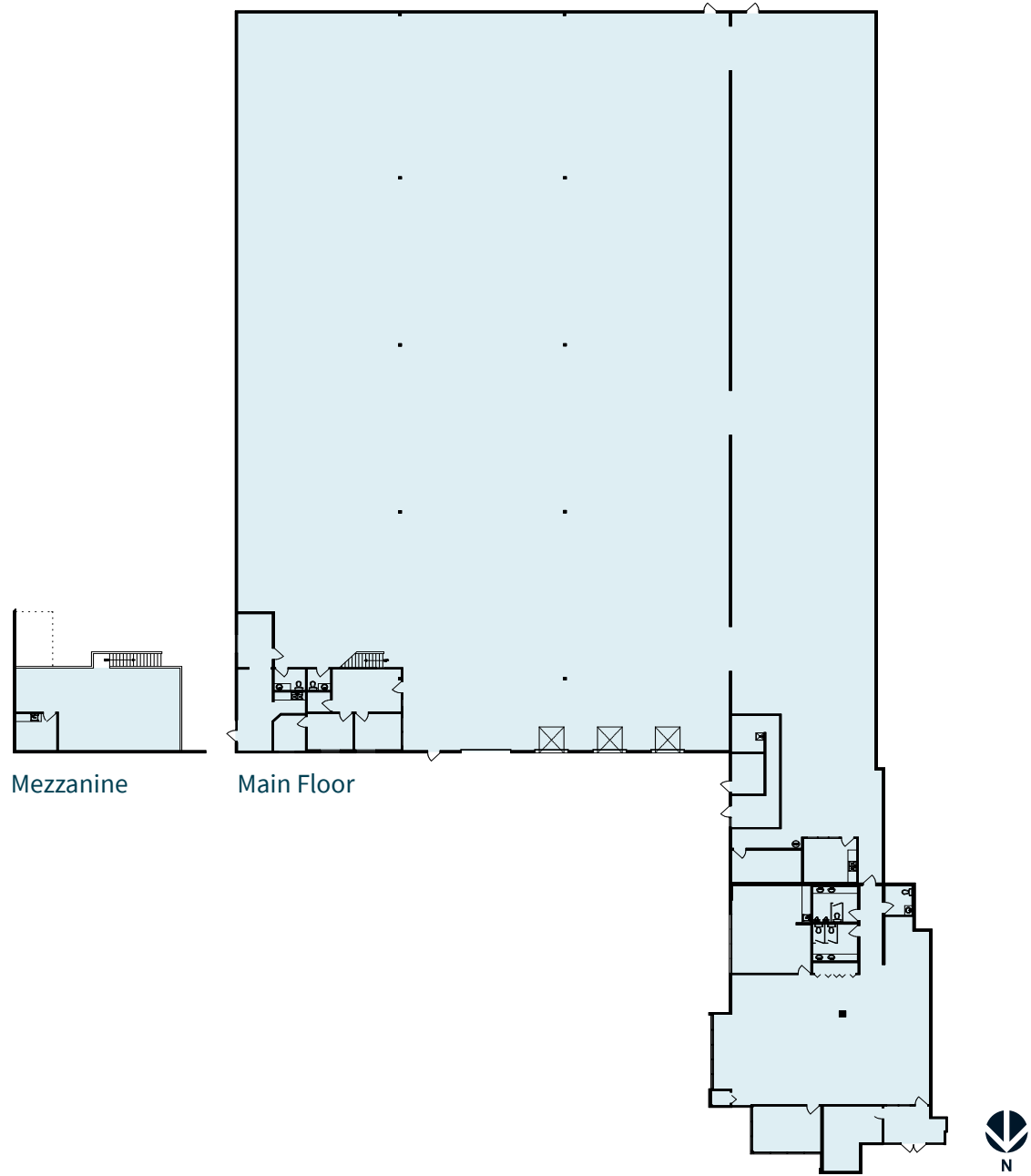
\$7.61 PSF (2025)

Year Built

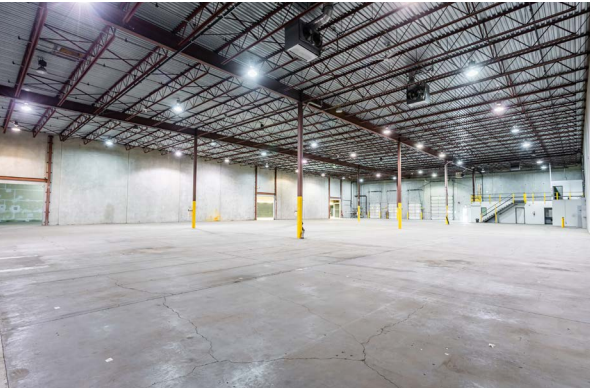
1991

Floor Plan

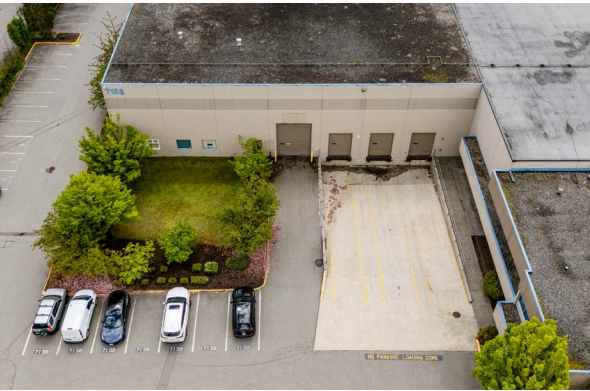
Ground Floor Office	4,505 SF
Warehouse	30,649 SF
Storage Mezzanine	991 SF
Total	36,145 SF



7158 Progress Way / Delta



7158 Progress Way / Delta





Vancouver

Burnaby

Coquitlam



7

7

17



Richmond

91

Surrey

Drive times

10 minutes
Highway 99

22 minutes
DeltaPort

30 minutes
YVR

35 minutes
CAN/US Border

45 minutes
Downtown Vancouver



7158
Progress Way, Delta



17

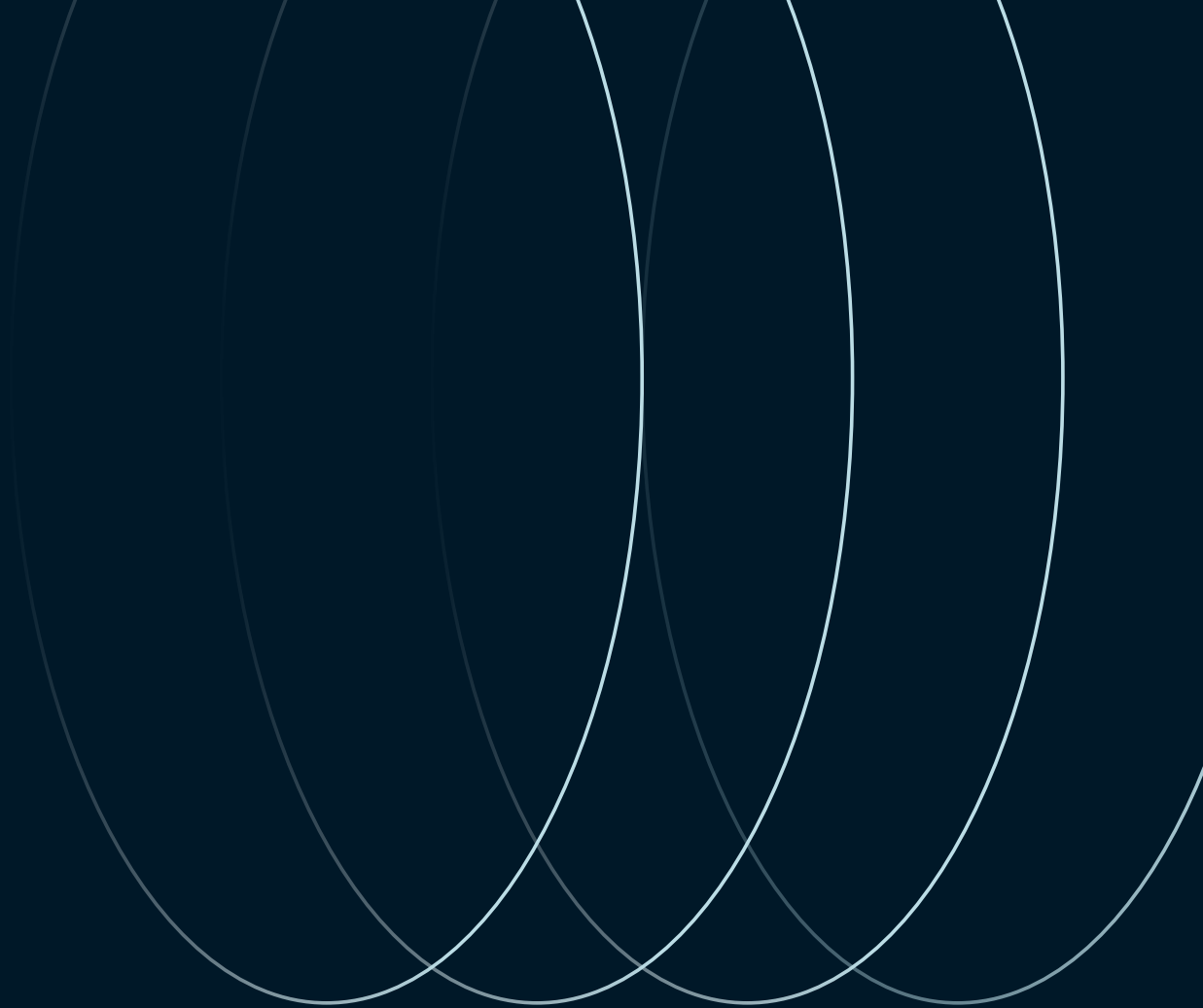
10

Delta

99

Langley

15



Stefan Morissette*

Senior Vice President

stefan.morissette@jll.com

+1 604 657 0801

*Personal Real Estate Corporation

Bruno Fiorvento*

Executive Vice President

bruno.fiorvento@jll.com

+1 604 551 1863

*Personal Real Estate Corporation

