



**Keegan & Coppin**  
COMPANY, INC.

FOR LEASE

2180-2230 NORTHPOINT PARKWAY  
BUILDINGS 4 & 6  
SANTA ROSA, CA

**NORTHPOINT CORPORATE CENTER  
OFFICE/INDUSTRIAL SPACE  
AVAILABLE**

2180

2180

Go beyond broker.

PRESENTED BY:

**SHAWN JOHNSON, MANAGING PARTNER / SIOR**  
LIC # 00835502 (707) 528-1400, EXT 238  
SJOHNSON@KEEGANCOPPIN.COM

**SARA WANN, PARTNER**  
LIC # 01437146 (707) 664-1400, EXT 108  
SWANN@KEEGANCOPPIN.COM





# PROPERTY INFORMATION



2180-2230 NORTHPOINT PKWY.  
BUILDINGS 4 & 6  
SANTA ROSA, CA

## AVAILABLE SPACE FOR LEASE

### HIGHLIGHTS

- Established business park
- Corner Suite with expanded glass line
- Flexible floor plan
- Competitive market rents
- Ample parking
- Amenities nearby
- Easy access to Hwy 101 & Hwy 12
- Storage with 2 roll-up doors

### DESCRIPTION OF LOCATION

Campus setting with excellent location and easily accessible from Highway 12 and Highway 101. Just minutes from downtown Santa Rosa. Close proximity to public transportation, residential housing, retail stores, public schools, and various other amenities. Northpoint Corporate Center is home to many prominent firms such as Viavi Solutions, Amy's Kitchen, Sonic.net, Kaiser Permanente (MOB) and many more private and public firms.

### LEASE TERMS

#### RATE

\$1.65 PSF

#### TERMS

Industrial Gross

Tenant pays separately metered utilities and interior janitorial plus approx. \$.04 Capital Expense Reimbursement.



### AVAILABLE SPACE

### DESCRIPTION

#### B4:

**Suite 2230: 1,782+/- RSF**

Office industrial suite with two open office areas and one private office with the balance warehouse and one roll-up door & main door

#### B6:

**Suite 2180: 4,767+/- RSF**

Office suite offering a combination of private offices, conference room, open office cubicle areas and kitchen/break room. Including approx 919 RSF of storage with 2 roll-up doors.

#### PRESENTED BY:

**SHAWN JOHNSON, MANAGING PARTNER / SIOR**  
**KEEGAN & COPPIN CO., INC.**  
LIC # 00835502 (707) 528-1400, EXT 238  
SJOHNSON@KEEGANCOPPIN.COM

**SARA WANN, PARTNER**  
**KEEGAN & COPPIN CO., INC.**  
LIC # 01437146 (707) 664-1400, EXT 108  
SWANN@KEEGANCOPPIN.COM





# AERIAL SITE MAP



2180-2230 NORTHPOINT PKWY.  
BUILDINGS 4 & 6  
SANTA ROSA, CA

**AVAILABLE SPACE  
FOR LEASE**



**PRESENTED BY:**

**SHAWN JOHNSON, MANAGING PARTNER / SIOR**  
**KEEGAN & COPPIN CO., INC.**  
LIC # 00835502 (707) 528-1400, EXT 238  
SJOHNSON@KEEGANCOPPIN.COM

**SARA WANN, PARTNER**  
**KEEGAN & COPPIN CO., INC.**  
LIC # 01437146 (707) 664-1400, EXT 108  
SWANN@KEEGANCOPPIN.COM



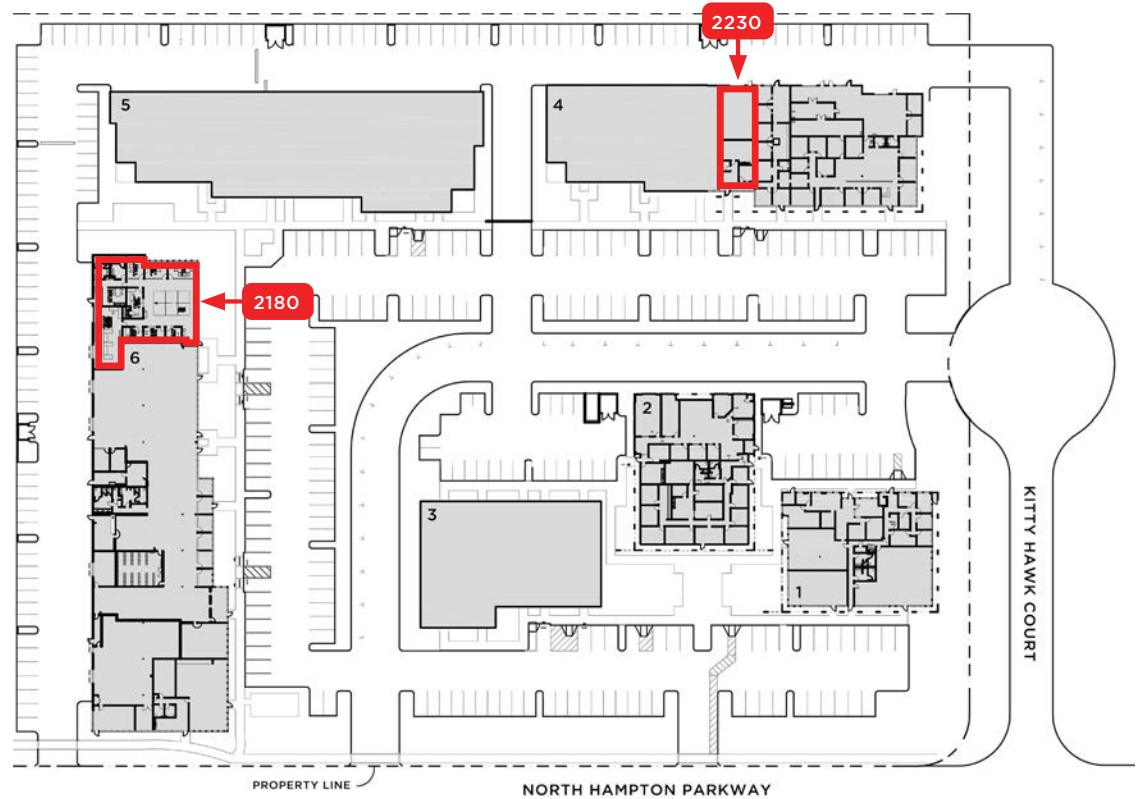


# SITE PLAN



2180-2230 NORTHPOINT PKWY.  
BUILDINGS 4 & 6  
SANTA ROSA, CA

**AVAILABLE SPACE  
FOR LEASE**



**PRESENTED BY:** SHAWN JOHNSON, MANAGING PARTNER / SIOR  
KEEGAN & COPPIN CO., INC.  
LIC # 00835502 (707) 528-1400, EXT 238  
SJOHNSON@KEEGANCOPPIN.COM

SARA WANN, PARTNER  
KEEGAN & COPPIN CO., INC.  
LIC # 01437146 (707) 664-1400, EXT 108  
SWANN@KEEGANCOPPIN.COM



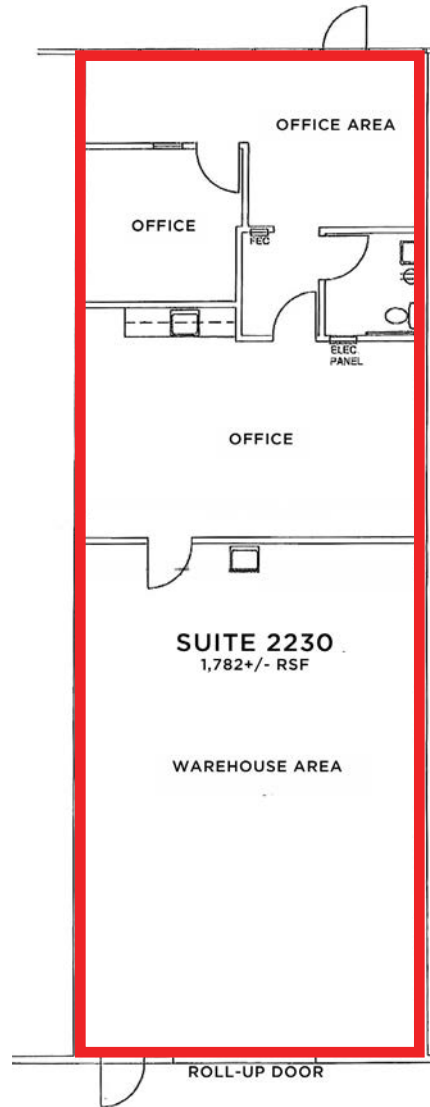
# FLOOR PLAN

BUILDING 4 - SUITE 2230



2180-2230 NORTHPOINT PKWY.  
BUILDINGS 4 & 6  
SANTA ROSA, CA

**AVAILABLE SPACE  
FOR LEASE**



**PRESENTED BY:**

**SHAWN JOHNSON, MANAGING PARTNER / SIOR**  
**KEEGAN & COPPIN CO., INC.**  
LIC # 00835502 (707) 528-1400, EXT 238  
SJOHNSON@KEEGANCOPPIN.COM

**SARA WANN, PARTNER**  
**KEEGAN & COPPIN CO., INC.**  
LIC # 01437146 (707) 664-1400, EXT 108  
SWANN@KEEGANCOPPIN.COM





# PROPERTY PHOTOS

## BUILDING 4 - SUITE 2230



2180-2230 NORTHPOINT PKWY.  
BUILDINGS 4 & 6  
SANTA ROSA, CA

**AVAILABLE SPACE  
FOR LEASE**



**PRESENTED BY:**

**SHAWN JOHNSON, MANAGING PARTNER / SIOR**  
**KEEGAN & COPPIN CO., INC.**  
LIC # 00835502 (707) 528-1400, EXT 238  
SJOHNSON@KEEGANCOPPIN.COM

**SARA WANN, PARTNER**  
**KEEGAN & COPPIN CO., INC.**  
LIC # 01437146 (707) 664-1400, EXT 108  
SWANN@KEEGANCOPPIN.COM





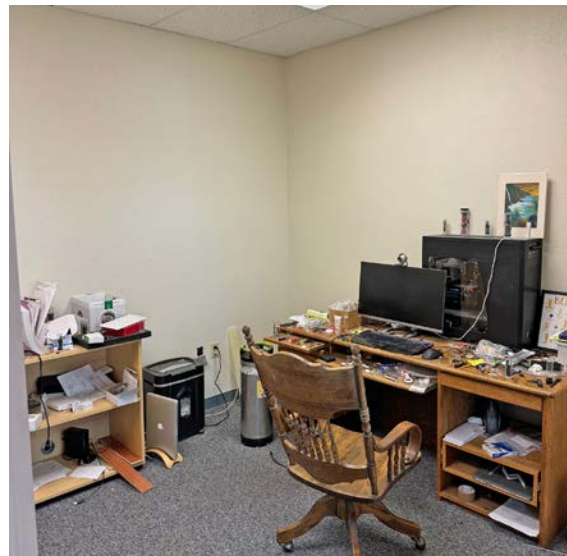
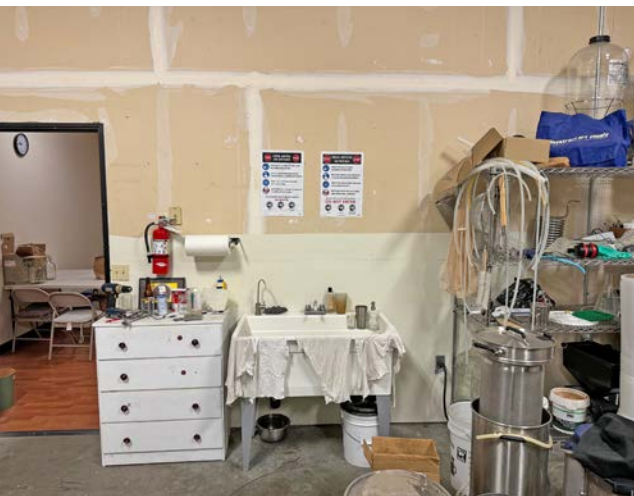
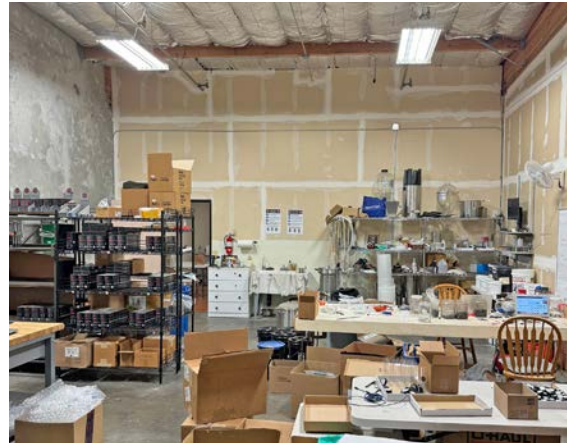
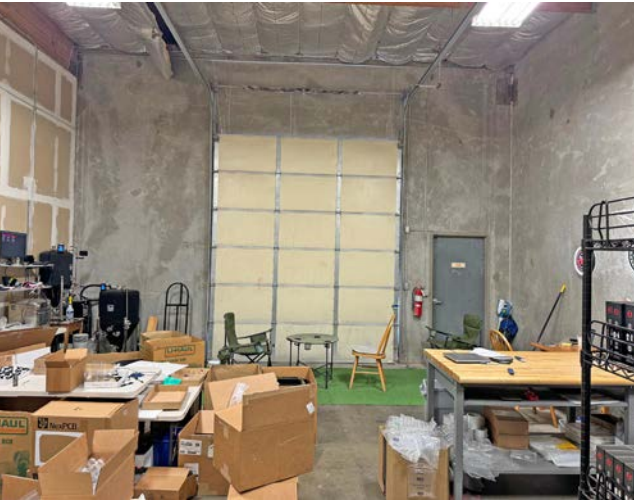
# PROPERTY PHOTOS

## BUILDING 4 - SUITE 2230



2180-2230 NORTHPOINT PKWY.  
BUILDINGS 4 & 6  
SANTA ROSA, CA

**AVAILABLE SPACE  
FOR LEASE**



**PRESENTED BY:**

**SHAWN JOHNSON, MANAGING PARTNER / SIOR**  
**KEEGAN & COPPIN CO., INC.**  
LIC # 00835502 (707) 528-1400, EXT 238  
SJOHNSON@KEEGANCOPPIN.COM

**SARA WANN, PARTNER**  
**KEEGAN & COPPIN CO., INC.**  
LIC # 01437146 (707) 664-1400, EXT 108  
SWANN@KEEGANCOPPIN.COM



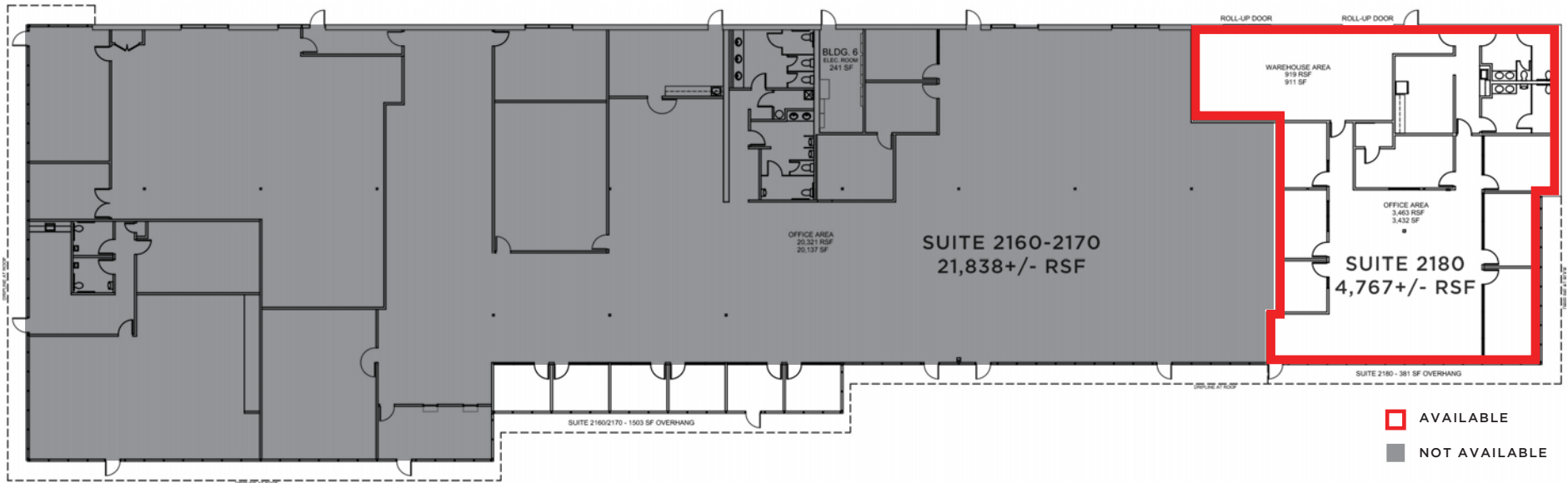
# FLOOR PLAN

## BUILDING 6 - SUITE 2180



2180-2230 NORTHPOINT PKWY.  
BUILDINGS 4 & 6  
SANTA ROSA, CA

### AVAILABLE SPACE FOR LEASE



**PRESENTED BY:**

**SHAWN JOHNSON, MANAGING PARTNER / SIOR**  
**KEEGAN & COPPIN CO., INC.**  
LIC # 00835502 (707) 528-1400, EXT 238  
SJOHNSON@KEEGANCOPPIN.COM

**SARA WANN, PARTNER**  
**KEEGAN & COPPIN CO., INC.**  
LIC # 01437146 (707) 664-1400, EXT 108  
SWANN@KEEGANCOPPIN.COM





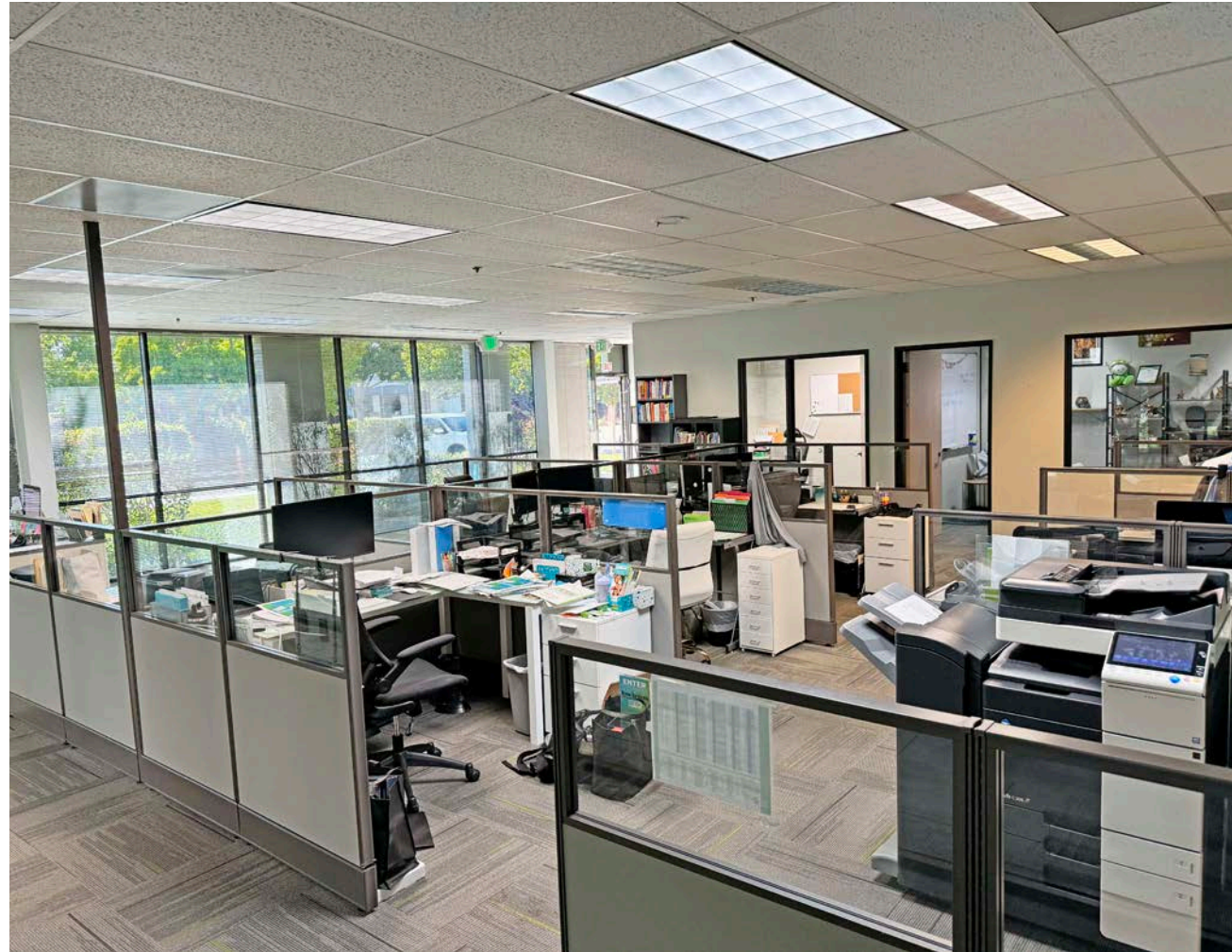
# PROPERTY PHOTOS

## BUILDING 6 - SUITE 2180



2180-2230 NORTHPOINT PKWY.  
BUILDINGS 4 & 6  
SANTA ROSA, CA

**AVAILABLE SPACE  
FOR LEASE**



**PRESENTED BY:**

**SHAWN JOHNSON, MANAGING PARTNER / SIOR**  
**KEEGAN & COPPIN CO., INC.**  
LIC # 00835502 (707) 528-1400, EXT 238  
SJOHNSON@KEEGANCOPPIN.COM

**SARA WANN, PARTNER**  
**KEEGAN & COPPIN CO., INC.**  
LIC # 01437146 (707) 664-1400, EXT 108  
SWANN@KEEGANCOPPIN.COM





# VICINITY MAP



2180-2230 NORTHPOINT PKWY.  
BUILDINGS 4 & 6  
SANTA ROSA, CA

**AVAILABLE SPACE  
FOR LEASE**



**2160 - 2300  
Northpoint Parkway**

**PRESENTED BY:**

**SHAWN JOHNSON, MANAGING PARTNER / SIOR  
KEEGAN & COPPIN CO., INC.  
LIC # 00835502 (707) 528-1400, EXT 238  
SJOHNSON@KEEGANCOPPIN.COM**

**SARA WANN, PARTNER  
KEEGAN & COPPIN CO., INC.  
LIC # 01437146 (707) 664-1400, EXT 108  
SWANN@KEEGANCOPPIN.COM**