

OFFICE / MEDICAL SPACE FOR LEASE

South Parsons Ave Brandon, FL 33511



PROPERTY HIGHLIGHTS:

- Suite 913 C: 1,440 SF Available
- Suite 915 B: 720 SF Available
- Suite 911 F: 715 SF Available
- Professional office park on S Parsons Ave
- Convenient Access to Brandon Regional Hospital and Brandon Surgery Center
- Adjacent to Johns Hopkins All Childrens Hospital Outpatient Care
- 0.9 miles to State Road 60 and .25 miles to Lumsden Road
- Various retailers and restaurants in the area

KEY DEMOS	1 MILE	3 MILES	5 MILES
POPULATION			
2025 Estimated Population	9,527	101,462	232,569
2025 Estimated Households	3,786	39,891	90,044
INCOME			
2025 Estimated Avg HH Income	\$110,191	\$110,712	\$114,357
AGE			
Median Age	38	37	37
DAYTIME DEMOS			
Number of Businesses	1,416	6,385	12,524
Number of Employees	9,370	37,988	78,846
Total Daytime Population	12,768	68,760	147,607
TRAFFIC COUNTS			
W Brandon Blvd	66,500 AADT		
I-75	102,500 AADT		
Lumsden Rd W	30,500 AADT		



FOR LEASING INFORMATION

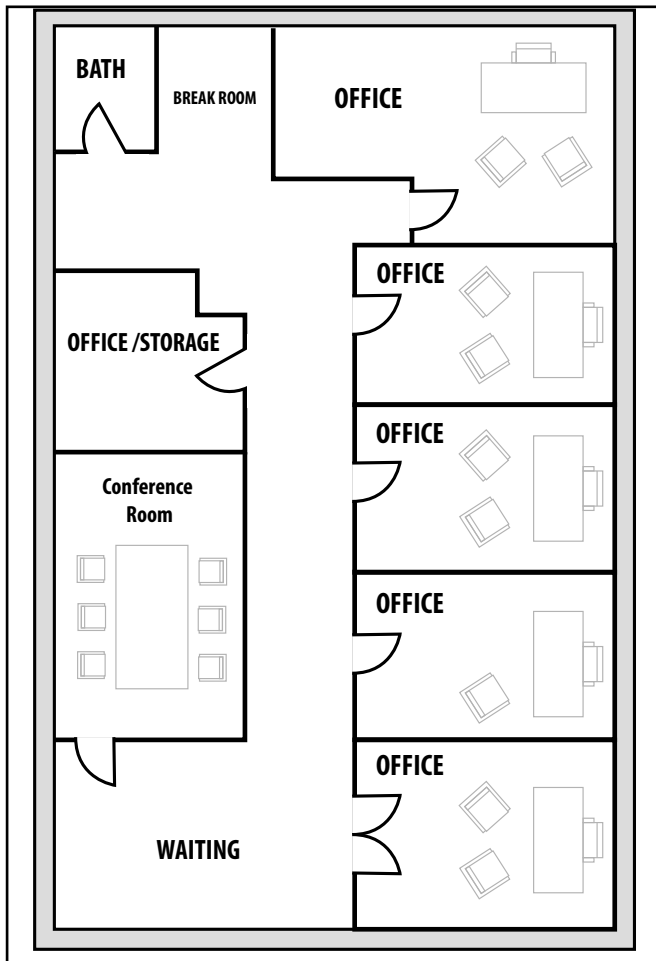
Luli Cannon
813.712.3054
Lcannon@rmcpgr.com

8902 N Dale Mabry Hwy
Tampa, FL 33614
800.728.5379
www.RMCPG.com

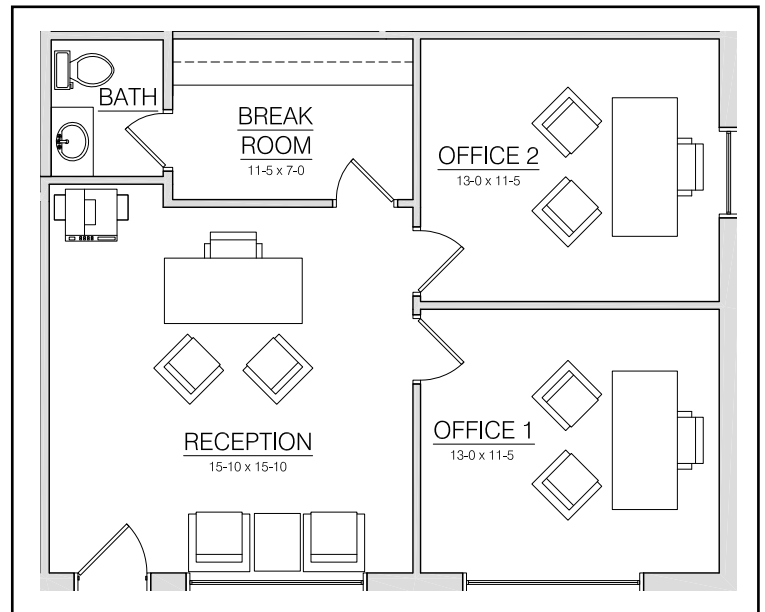
OFFICE / MEDICAL SPACE FOR LEASE

South Parsons Ave Brandon, FL 33511

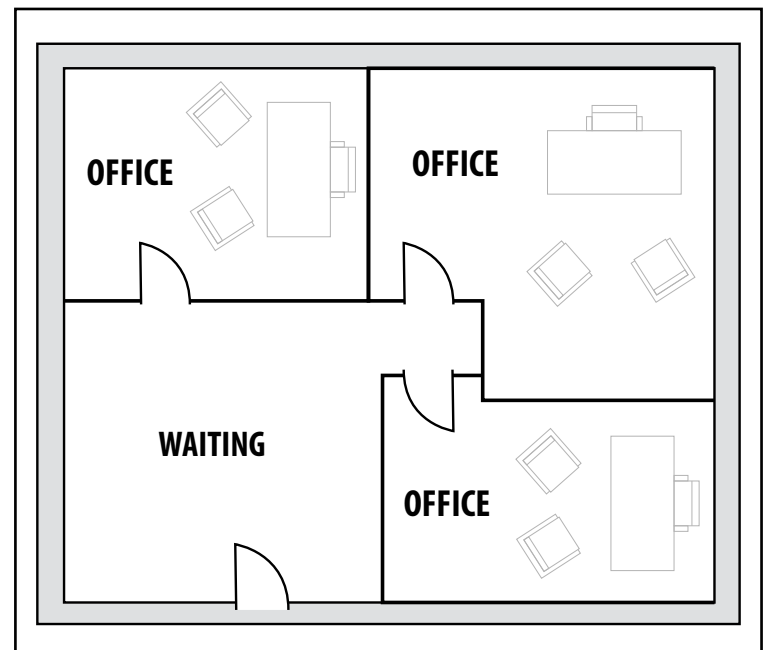
Suite 913 C - 1,440 SF



Suite 915 B - 720 SF



Suite 911 F - 715 SF



OFFICE / MEDICAL SPACE FOR LEASE

South Parsons Ave Brandon, FL 33511



All information given herein is obtained from sources considered reliable. However, we are not responsible for misstatement of facts, errors, omissions, prior sale, withdrawal from market, modification of mortgage commitment, terms and considerations, or change in price without notice. The information supplied herein is for informational purposes only and shall not contain a warranty or assurance that said information is correct. Any person intending to rely upon the information supplied herein should verify said information independently. **UPDATED: 10/27/25**



FOR LEASING INFORMATION

Luli Cannon
813.712.3054
Lcannon@rmcpgr.com

8902 N Dale Mabry Hwy
Tampa, FL 33614
800.728.5379
www.RMCPG.com