

FOR LEASE HIGH VISIBILITY RETAIL SPACE



1760-1764 South Broadway | Santa Maria, CA
Retail Building | $\pm 6,800$ SF - $\pm 17,275$ SF

Jerry Schmidt
805.928.2800 ext. 107
Jerry@PacificaCRE.com
Lic #0095042

Pat Palangi
805.928.2800 ext. 105
Pat@PacificaCRE.com
Lic #01105680

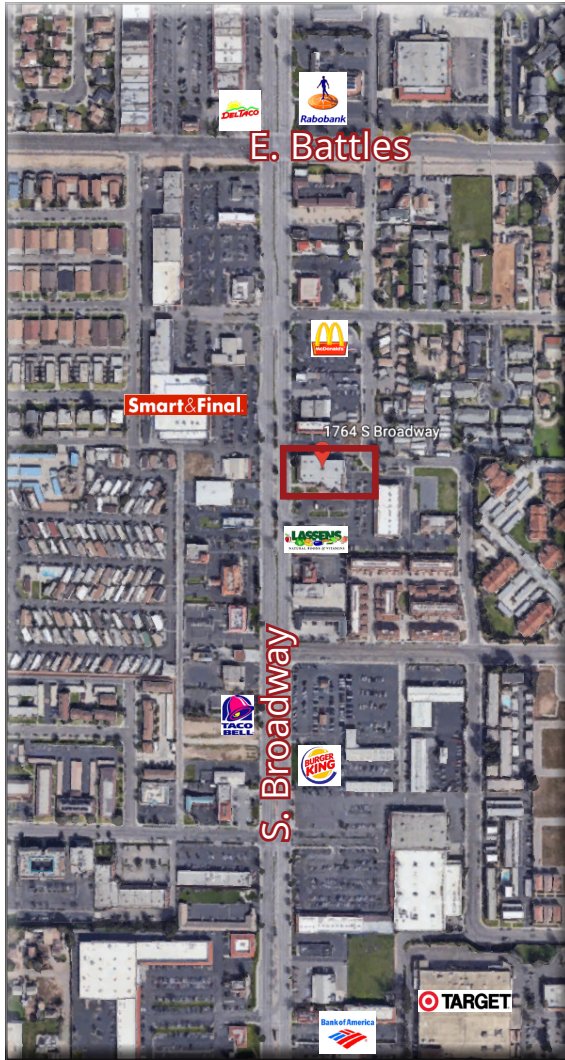
Mike Kelly
805.928.2800 ext. 113
Mike@PacificaCRE.com
Lic #01800988

PO Box 250 | Santa Maria, CA 93456 | PacificaCommercialRealty.com

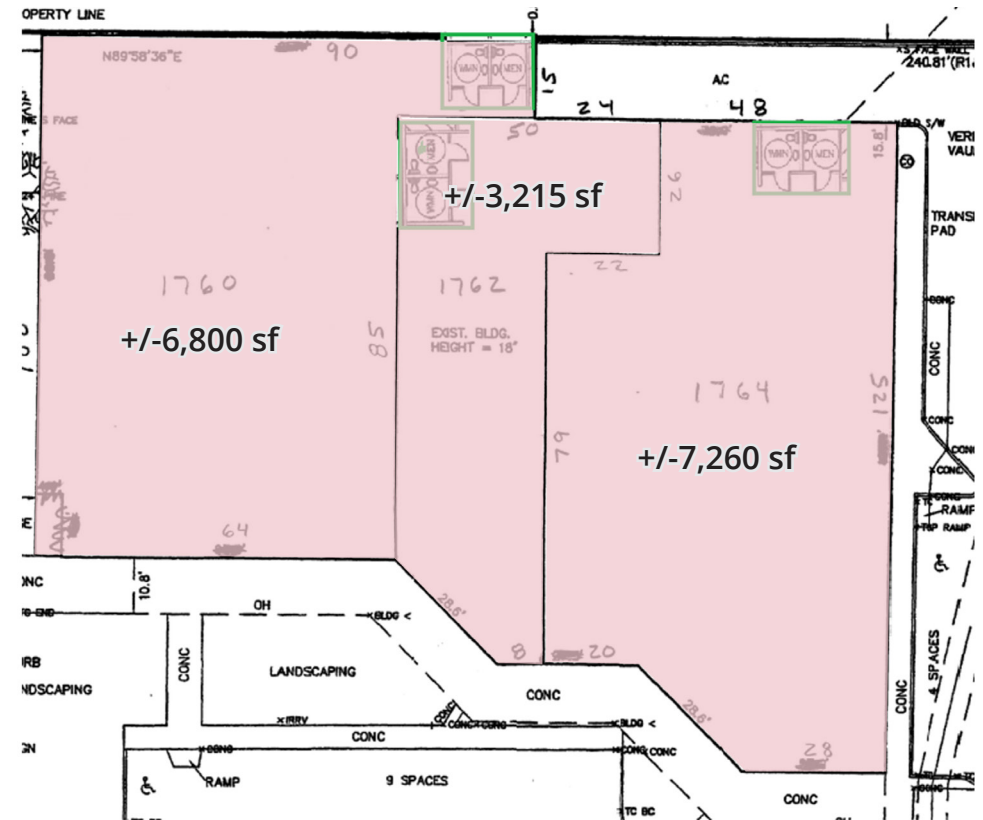


Information contained herein has been obtained from the owner of the property or from other sources deemed reliable. We have no reason to doubt its accuracy, but we do not guarantee it.

FOR LEASE 1760-1764 SOUTH BROADWAY, SANTA MARIA, CA



LEASE DETAILS	
Lease Rate	\$1.75/SF/Month, MG
Size	±6,800 SF - ±17,275 SF



Retail end-cap in an established retail center known as Plum Tree Plaza. Good visibility and signage from South Broadway. Call listing agent to show.



Information contained herein has been obtained from the owner of the property or from other sources deemed reliable. We have no reason to doubt its accuracy, but we do not guarantee it.

PO Box 250 | Santa Maria, CA 93456 | PacificaCommercialRealty.com