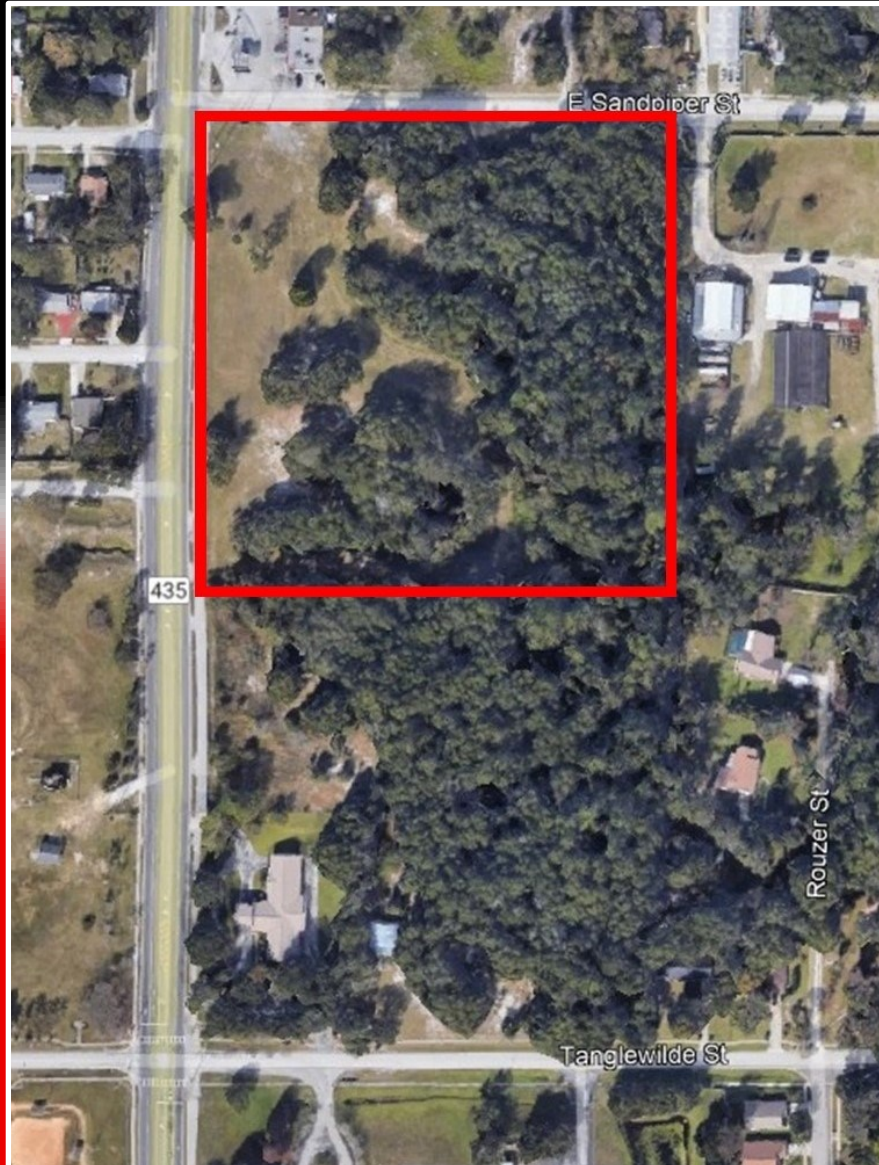


LAND for SALE: Park Avenue & E. Sandpiper St, Apopka, FL

8.09 Acres

751 N. Park Avenue, Apopka, FL 32712



PROPERTY HIGHLIGHTS

Flexible Pad Sizes including multiple Drive-Thru opportunities.

Signalized Light coming to Park Ave and Sandpiper St intersection.

Ideal Uses: Retail, Restaurant, Medical, Office and more.

Multiple Ingress and Egress points on both roads.

N. Park Ave traffic count: 24,515 cars per day.

Apopka is the 2nd fastest growing city in the Tri-County Area.

DEMOGRAPHICS

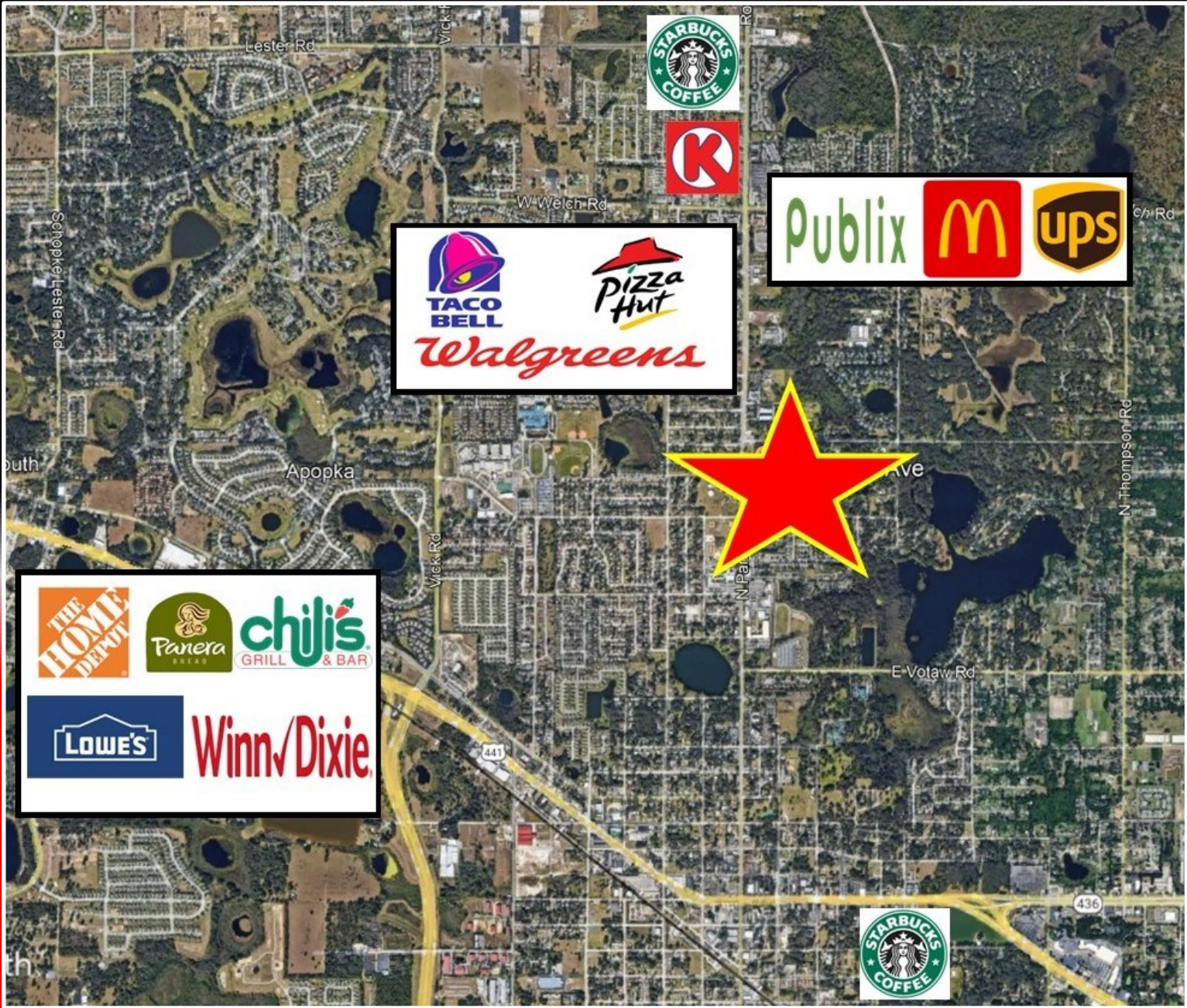
DEMOGRAPHICS	1 MILE	3 MILES	5 MILES
Total Households	3,222	21,325	41,003
Total Population	10,106	62,750	116,923
Average HH Income	\$84,423	\$84,831	\$90,864

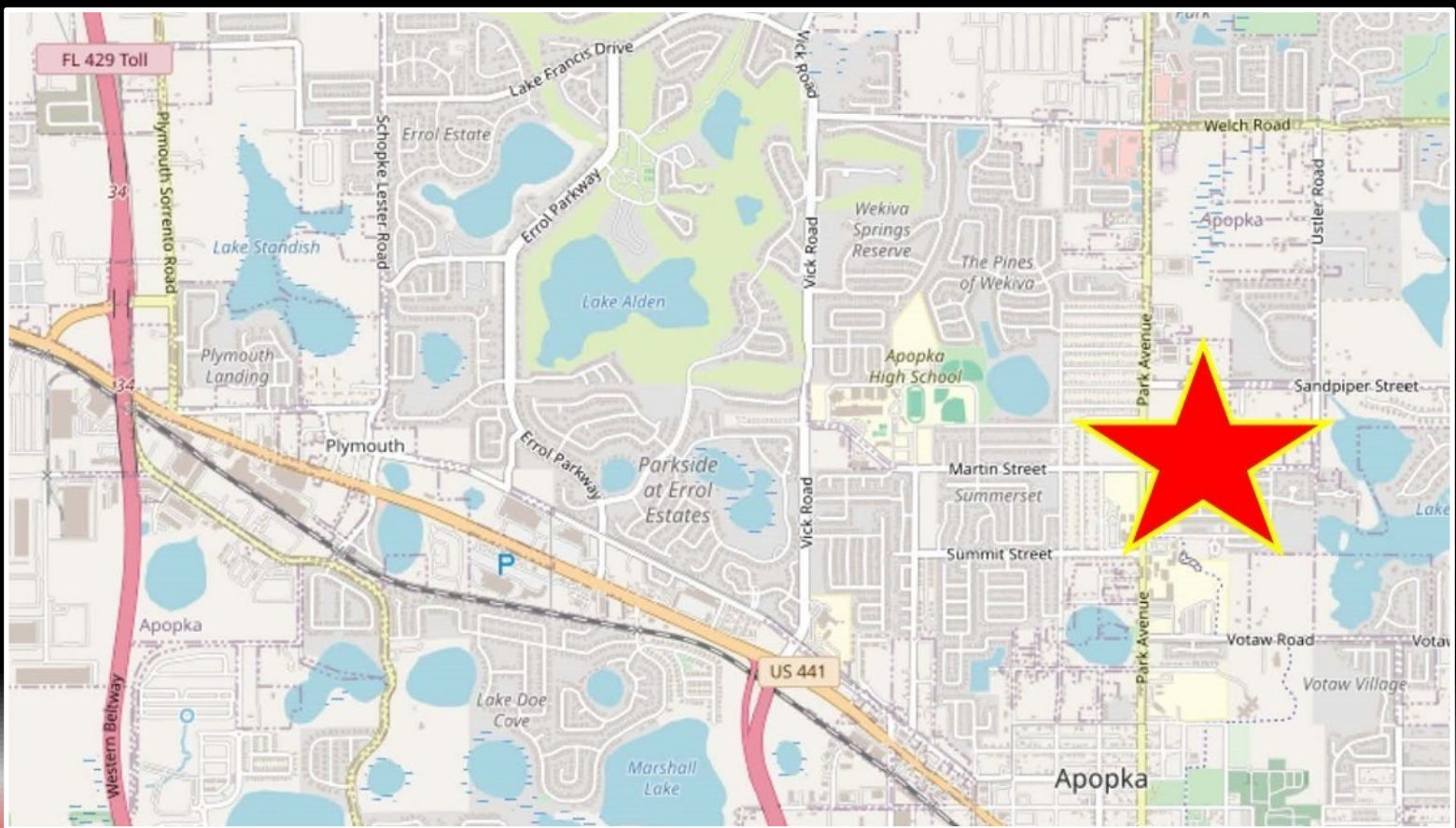
POPULATION

POPULATION	1 MILE	3 MILES	5 MILES
Total Population	10,106	62,750	116,293
Average Age	35.6	36.1	37.4
Average Age (Male)	34.8	35.6	36.4
Average Age (Female)	35.3	36.2	38.3

HOUSEHOLDS & INCOME

HOUSEHOLDS & INCOME	1 MILE	3 MILES	5 MILES
Total Households	3,222	21,325	41,003
# of Persons per HH	3.14	2.93	2.82
Average HH Income	\$84,423	\$84,831	\$90,864
Average House Value	\$269,670	\$296,507	\$306,661





PRICE: Call for Pricing



David Lundberg
(407) 701-4400
dlundberg@cepadvisors.com



Greg Kainz
(407) 310-2718
gkainz@cepadvisors.com



LEGAL DISCLAIMER:

INFORMATION GIVEN HEREWITH IS OBTAINED FROM SOURCES CONSIDERED RELIABLE; HOWEVER, WE ARE NOT RESPONSIBLE FOR MISSTATEMENT OF FACTS, ERRORS, OMISSIONS, PRIOR SALE, AND WITHDRAWAL FROM MARKET, CHANGE IN PRICE OR AVAILABILITY WITHOUT NOTICE. THE INFORMATION SUPPLIED HEREIN IS FOR INFORMATION PURPOSES ONLY AND SHALL NOT CONSTITUTE A WARRANTY OR ASSURANCE THAT SAID INFORMATION IS CORRECT. ANY PERSON INTENDING TO RELY UPON THE INFORMATION SUPPLIED HEREIN SHOULD VERIFY SAID INFORMATION INDEPENDENTLY.