

AVISON  
YOUNG



225

Friend Street



High, exposed ceilings,  
natural light



Recently renovated lobby  
and common areas



Bike storage



On-site parking



Walking distance to TD Garden  
and The Hub on Causeway

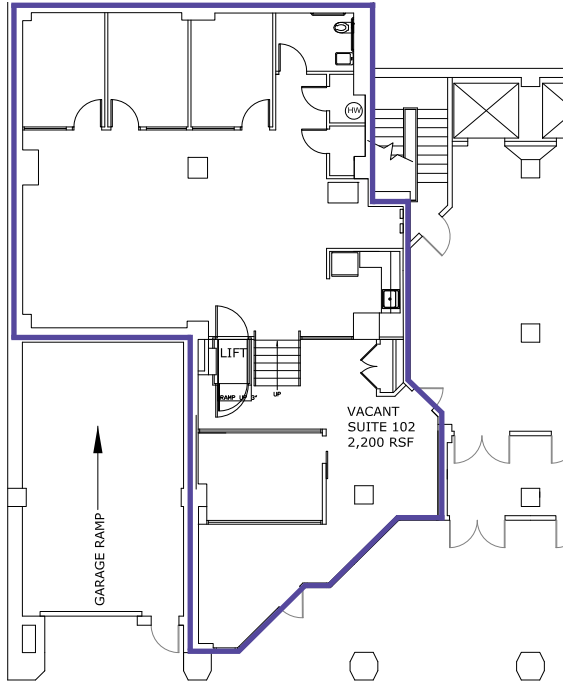


Easy access to MBTA (green &  
orange lines), Commuter Rail,  
and Bus at North Station

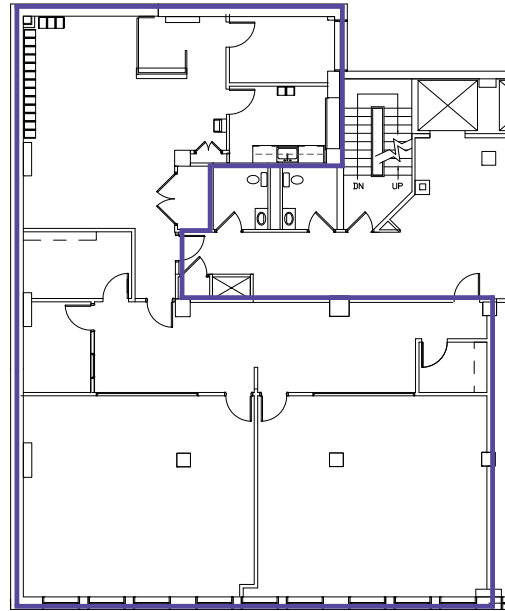
Property highlights

# Existing floor plans

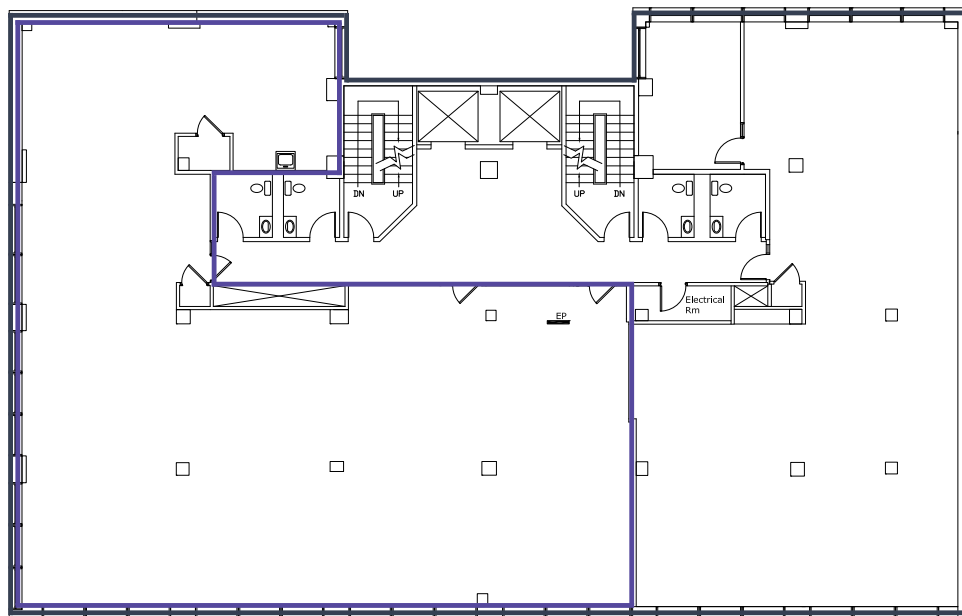
**Partial 1st Floor** | 2,200 SF



**Partial 3rd Floor** | 3,822 SF



**Full 4th Floor** | 8,100 SF



**Partial 4th Floor** | 4,837 SF

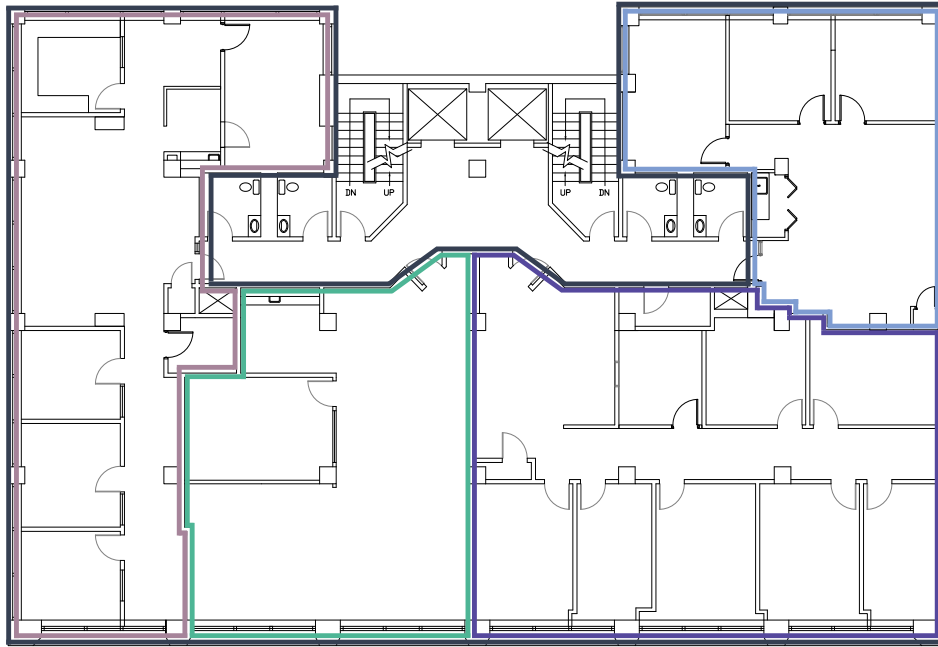
**Partial 5th Floor** | 5,513 SF (combined)

**Partial 5th Floor** | 2,344 SF

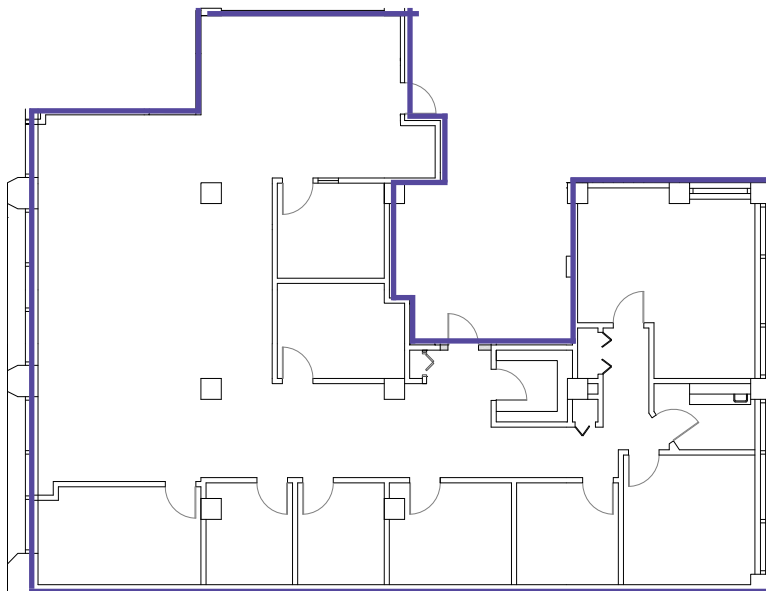
**Partial 5th Floor** | 2,533 SF

**Partial 5th Floor** | 1,689 SF

**Partial 5th Floor** | 1,291 SF



**Partial 6th Floor** | 3,744 SF







# 225

## Friend Street

Boston, MA

For more information, please contact:

**Jeff Gates**, Principal  
617.993.0732  
[jeff.gates@avisonyoung.com](mailto:jeff.gates@avisonyoung.com)

**Kirk Weller**, Senior Vice President  
617.456.1363  
[kirk.weller@avisonyoung.com](mailto:kirk.weller@avisonyoung.com)

200 State Street | 15th Floor | Boston, MA 02109

© 2025, Avison Young New England LLC. The information contained herein was obtained from sources which we deem reliable and, while thought to be correct, is not guaranteed by Avison Young and as such, cannot be warranted nor form any part of any future contract.

**KS** Partners

**AVISON  
YOUNG**