

1903 Atlantic Ave

MANASQUAN, NJ 08736



NEW CONSTRUCTION

Site Description:

- (2) Office/Medical Condo Shells
 - 1,343 SF & 1,267 SF w/ full basement
- Zoning: OR5
- Approximately 8 months for site improvements and delivery of shell for interior fit-out

Westwind Professional Plaza II - Sale & Lease

Jarrad Coletta | Owner/Broker Associate

Direct: 732 746 3051 ext. 103

Email: Jarrad@ColettaCommercial.com



RETAIL | INVESTMENTS | LAND

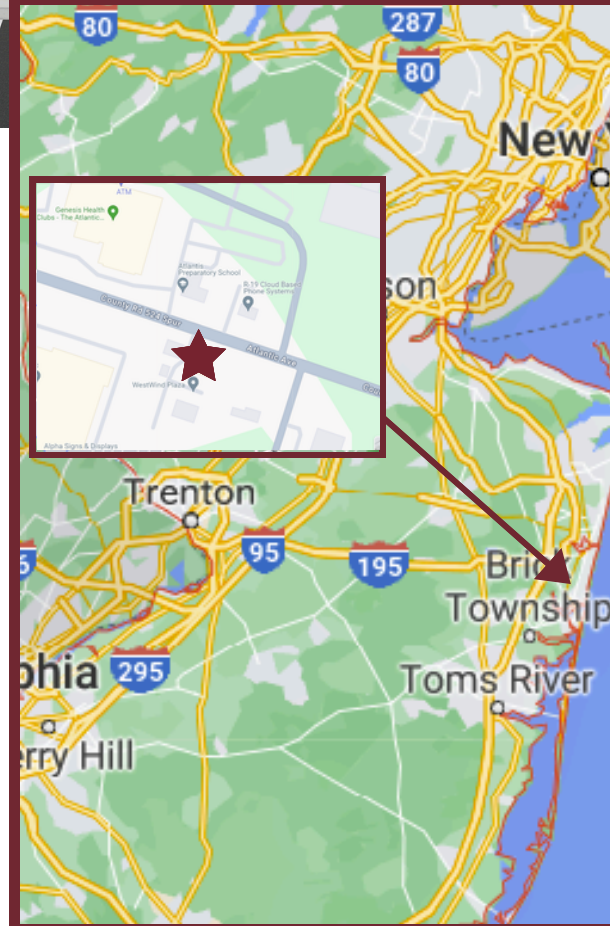
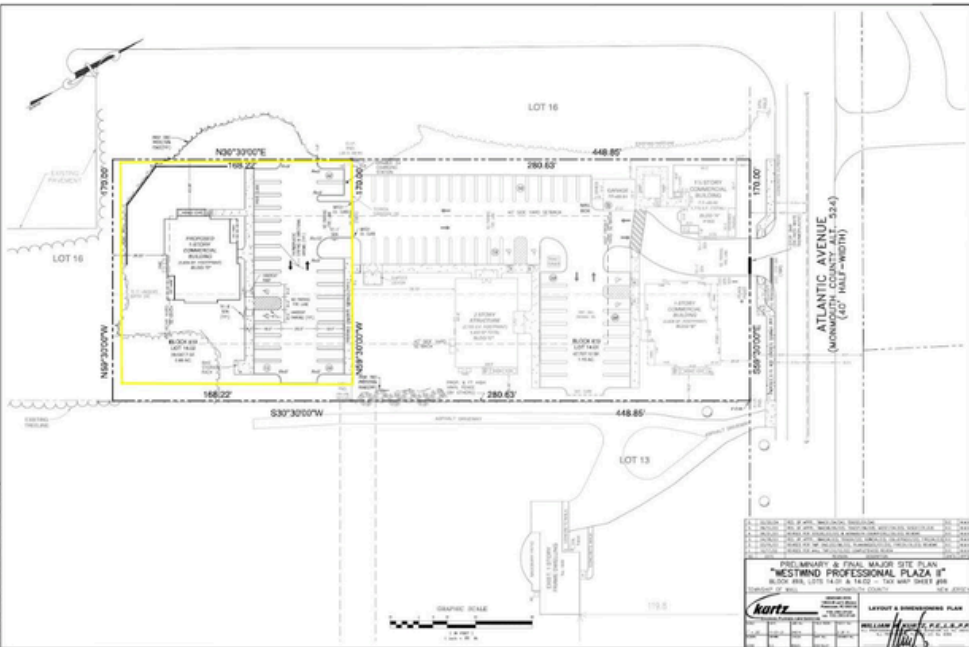
1101 Richmond Ave, Suite 200, Point Pleasant Beach, NJ 08742 | www.ColettaCommercial.com | Licensed Real Estate Broker

1903 Atlantic Ave

MANASQUAN, NJ 08736



SITE PLAN



Westwind Professional Plaza II - Sale & Lease

Jarrad Coletta | Owner/Broker Associate

Direct: 732 746 3051 ext. 103

Email: Jarrad@ColettaCommercial.com



1101 Richmond Ave, Suite 200, Point Pleasant Beach, NJ 08742 | www.ColettaCommercial.com | Licensed Real Estate Broker