

FULLY RENOVATED OFFICE BUILDING IN PRIME CLINTON TOWNSHIP LOCATION



**43750 Garfield
Clinton Township, MI 48038**



Agent Contact Information

JIMMY DIEHL • O: 586.254.0900 x109 • C: 586.337.5241 • j.diehl@pilotpg.com
ANTHONY RUBINO • O: 586.254.0900 x101 • C: 586.873.5419 • anthony@pilotpg.com

PILOT

PROPERTY GROUP

38600 Van Dyke, Suite 325
Sterling Heights, MI 48312
586.254.0900 • www.pilotpg.com

3	PROPERTY SUMMARY
4, 5	FLOOR PLANS
6, 7	TRADE AREA
8	MARKET AREA
9	UTILITY USAGE
10 - 13	GALLERY



Information is subject to verification and no liability for errors or omissions is assumed. Price is subject to change and listing withdraw without notice. Pilot Property Group has prepared this document/email for marketing, or general information purposes only. Information contained herein has been obtained from the owners, or from other sources deemed reliable. We have no reason to doubt its accuracy, but we can not guarantee it.

All properties are subject to change, or withdraw without notice.

PROPERTY SUMMARY

COMPLETE RENOVATION IN 2019 43750 GARFIELD RD, CLINTON TOWNSHIP, MI 48038

Completely remodeled in 2019, this modern office building features 26,200 SF of finished office space, plus an additional 6,875 SF of storage/warehouse space (which can be built out to suit by the landlord). The building boasts contemporary finishes throughout, including three kitchenettes, a stunning break room, multiple conference rooms, spacious private offices, and a large dedicated training area—ideal for team development or client presentations.

Set in a campus-like environment just off Garfield Rd, this location offers excellent accessibility with quick connections to Hall Rd (M-59), Metro Parkway, and I-94—making it a convenient and central hub for any professional operation.

Property Type: Office
Cross Streets: East side of Garfield, between 19 Mile and Hall
Total Square Footage: 33,076
Minimum Square Footage: Approx. 6,875
Maximum Square Footage: 33,076
Lot Size: 4.834 Acres
Year Built: 1987 - Remodeled 2019
Office Square Footage: 26,200
Shop Square Footage: 6,875
Zoning: OS-1
Parking Spaces: Ample
Lease Rate: \$22.95/SF
Lease Type: Gross plus Utilities

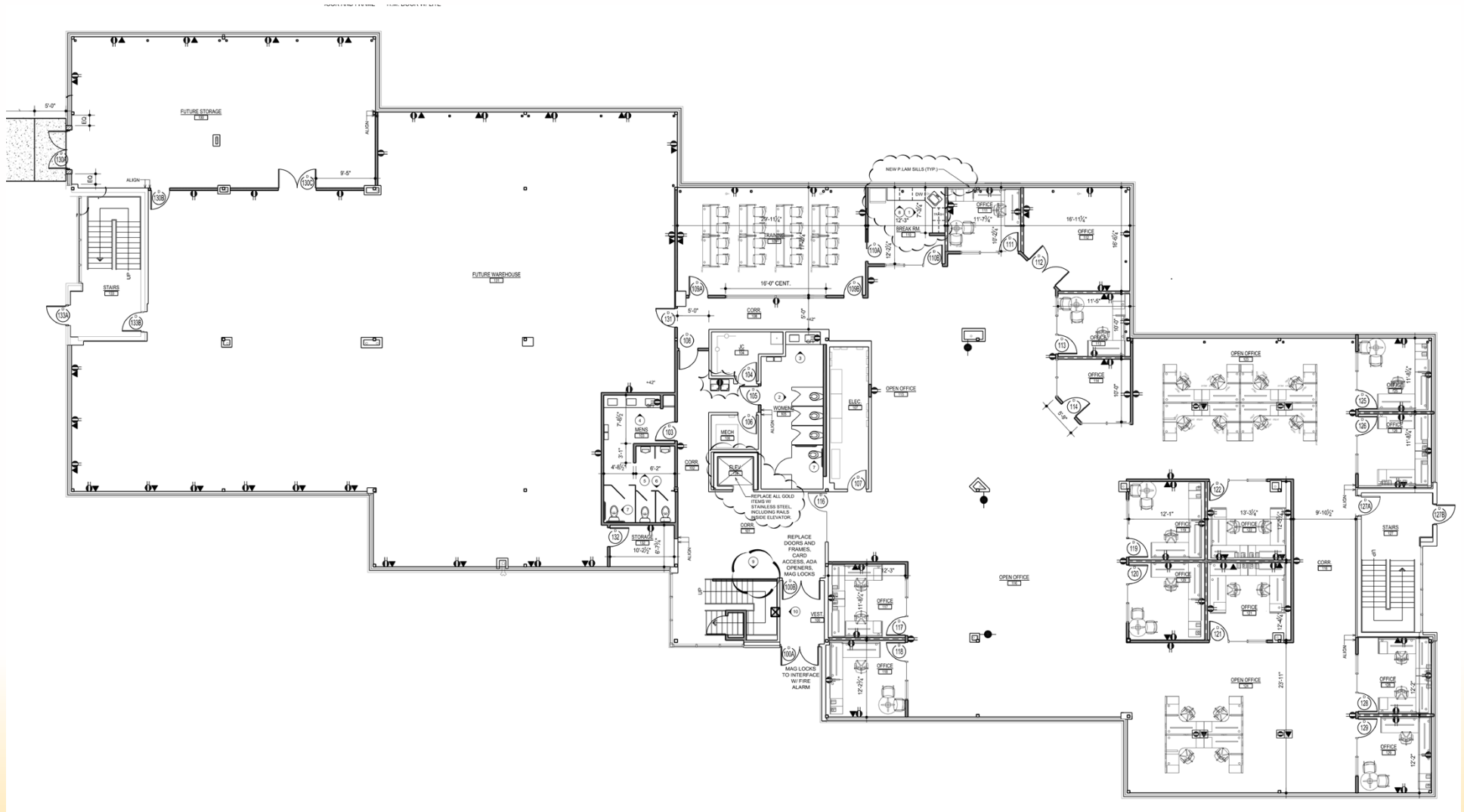


Agent Contact Information

JIMMY DIEHL • O: 586.254.0900 x109 • C: 586.337.5241 • j.diehl@pilotpg.com
ANTHONY RUBINO • O: 586.254.0900 x101 • C: 586.873.5419 • anthony@pilotpg.com

Offices in Sterling Heights and Port Huron to serve you
586.254.0900 • www.pilotpg.com

FLOOR PLAN - 1st Floor

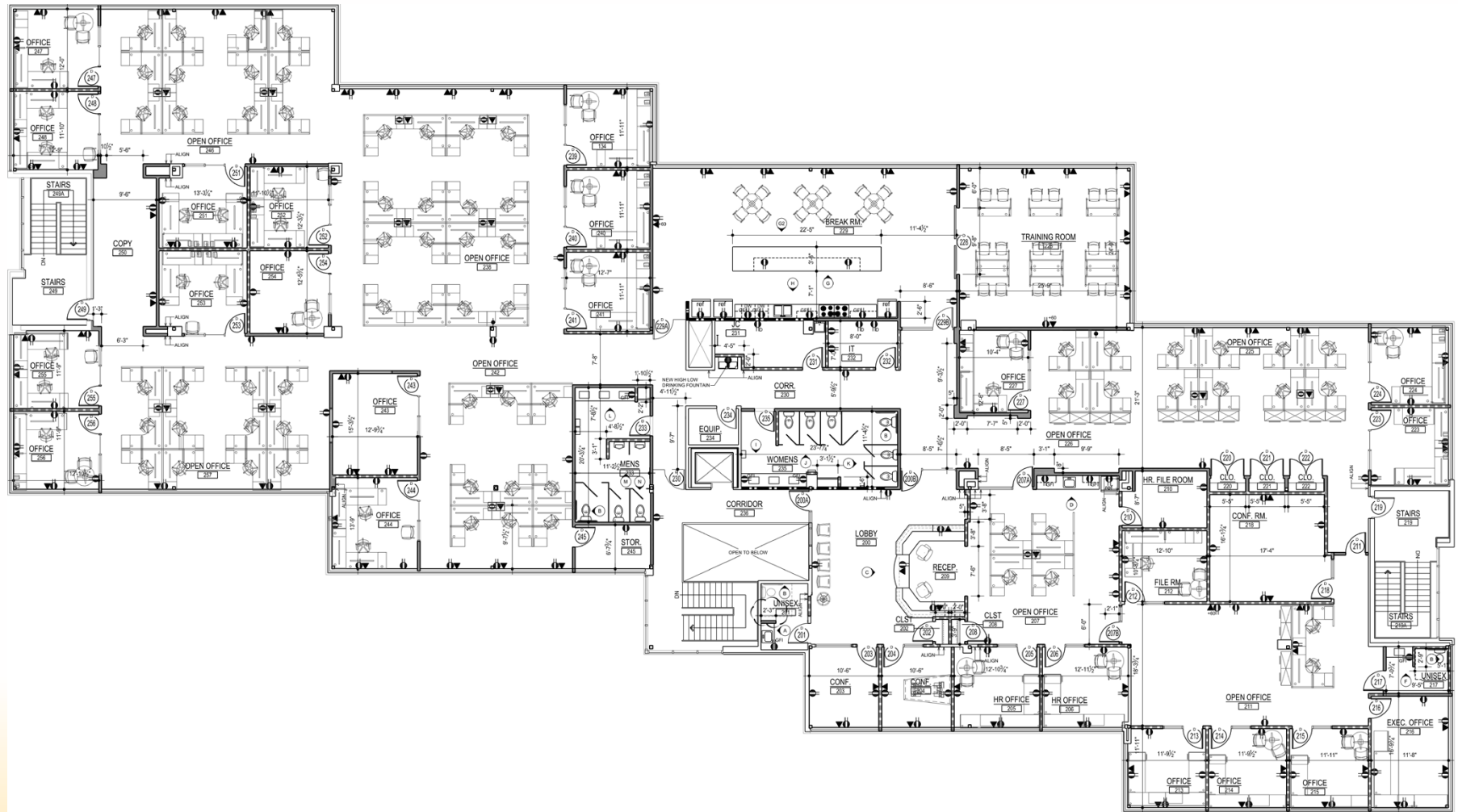


Agent Contact Information

JIMMY DIEHL • O: 586.254.0900 x109 • C: 586.337.5241 • j.diehl@pilotpg.com
ANTHONY RUBINO • O: 586.254.0900 x101 • C: 586.873.5419 • anthony@pilotpg.com

Offices in Sterling Heights and Port Huron to serve you
586.254.0900 • www.pilotpg.com

FLOOR PLAN - 2nd Floor



Agent Contact Information

JIMMY DIEHL • O: 586.254.0900 x109 • C: 586.337.5241 • j.diehl@pilotpg.com
ANTHONY RUBINO • O: 586.254.0900 x101 • C: 586.873.5419 • anthony@pilotpg.com

Offices in Sterling Heights and Port Huron to serve you
586.254.0900 • www.pilotpg.com

TRADE AREA - North



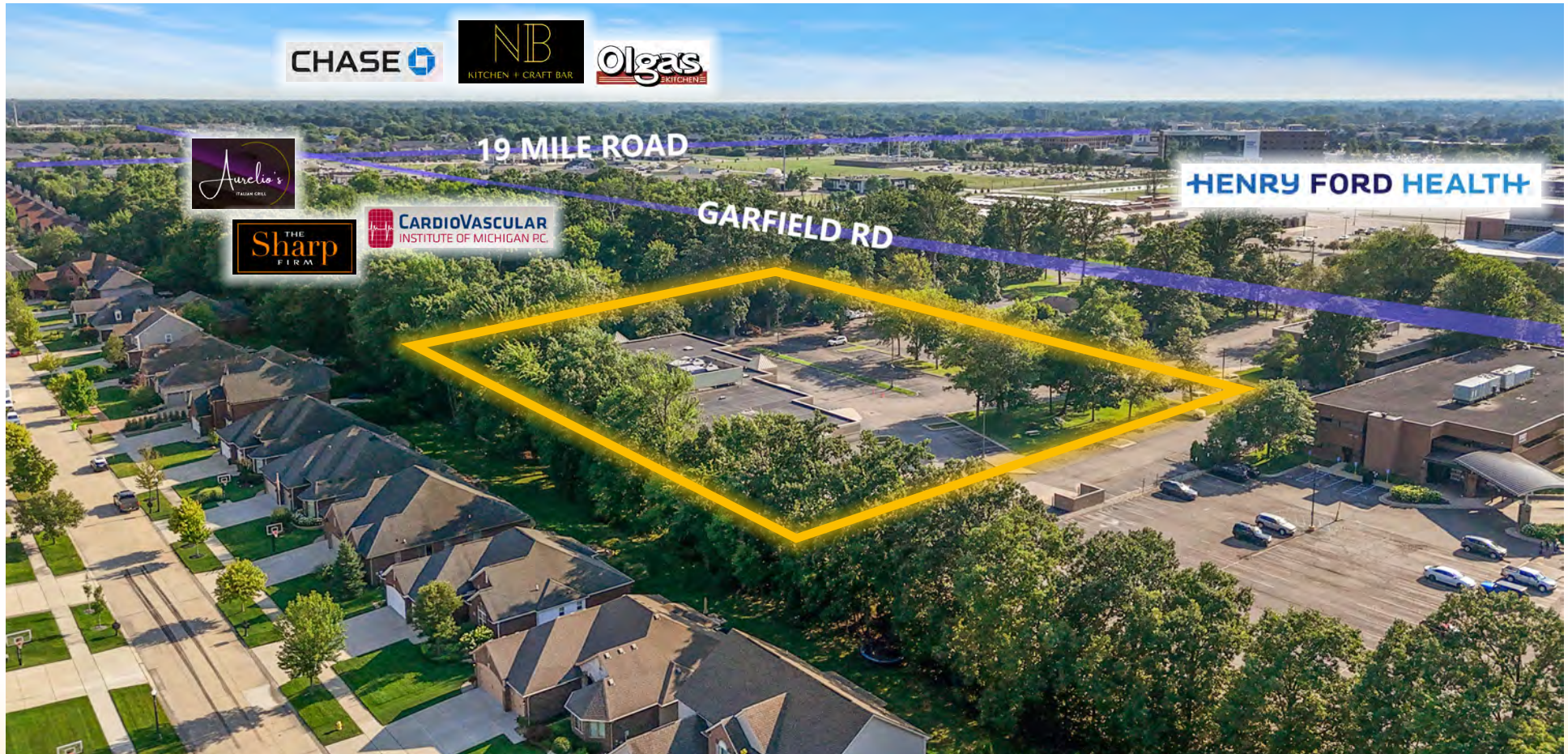
PILOT
PROPERTY GROUP

Agent Contact Information

JIMMY DIEHL • O: 586.254.0900 x109 • C: 586.337.5241 • j.diehl@pilotpg.com
ANTHONY RUBINO • O: 586.254.0900 x101 • C: 586.873.5419 • anthony@pilotpg.com

Offices in Sterling Heights and Port Huron to serve you
586.254.0900 • www.pilotpg.com

TRADE AREA - South



PILOT
PROPERTY GROUP

Agent Contact Information

JIMMY DIEHL • O: 586.254.0900 x109 • C: 586.337.5241 • j.diehl@pilotpg.com
ANTHONY RUBINO • O: 586.254.0900 x101 • C: 586.873.5419 • anthony@pilotpg.com

Offices in Sterling Heights and Port Huron to serve you
586.254.0900 • www.pilotpg.com

MARKET AREA

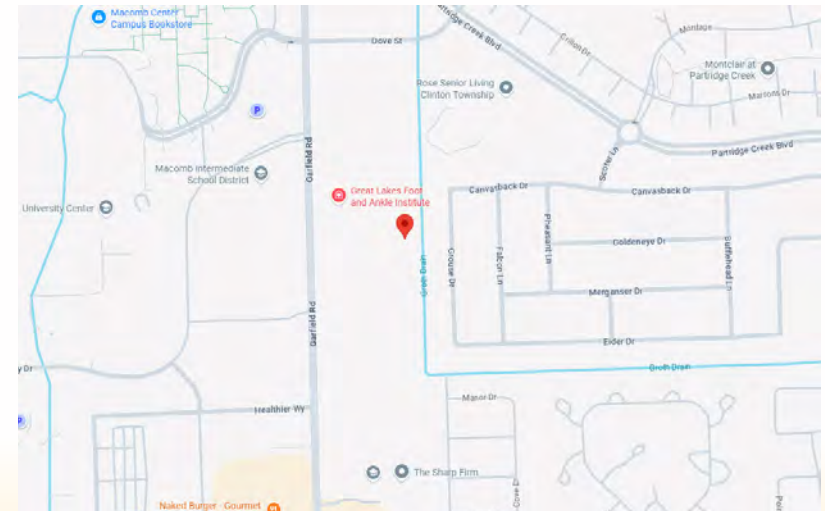


CLINTON TOWNSHIP

Clinton Township is a charter township in Macomb County in the U.S. state of Michigan. A northern suburb of Detroit, Clinton Township is located about 22 miles (35 km) northeast of downtown Detroit. As of the 2020 census, the township had a population of 100,513, making it the most populous township in Michigan, and the state's 8th-most populous community overall.

Clinton Township has a total area of 28.37 square miles (73.5 km²), of which 28.03 square miles (72.6 km²) are land and 0.35 square miles (0.91 km²), or 1.22%, are water. The Clinton River, for which the community is named, is formed from three branches within the township, and runs east into Harrison Township, where it flows into Lake St. Clair.

As of the census of 2010, there were 96,796 people, 42,036 households, and 25,678 families residing in the township. By 2016, the township's population was estimated to have surpassed 100,000.



Agent Contact Information

JIMMY DIEHL • O: 586.254.0900 x109 • C: 586.337.5241 • j.diehl@pilotpg.com
ANTHONY RUBINO • O: 586.254.0900 x101 • C: 586.873.5419 • anthony@pilotpg.com

Offices in Sterling Heights and Port Huron to serve you
586.254.0900 • www.pilotpg.com

UTILITY USAGE

43750 Garfield

Average Monthly Utility cost by Category

Period: July-2023 to June 2025

Building Square Footage = 33076

Average Cost per Square Foot = .23

Average						
Month	Electrical	Gas	Janitorial	Trash Removal	Water	Grand Total
January	1,032.40	1,223.06	3,960.00	475.00	397.85	7,088.31
February	974.42	1,549.94	3,960.00	475.00	436.40	7,395.75
March	1,060.45	1,137.78	3,960.00	475.00	420.75	7,053.98
April	1,287.52	930.11	3,960.00	475.00	482.13	7,134.75
May	1,750.95	640.21	3,960.00	475.00	727.98	7,554.14
June	2,814.91	468.30	3,960.00	475.00	621.01	8,339.21
July	3,018.24	316.11	3,960.00	475.00	644.81	8,414.16
August	3,226.67	310.36	3,960.00	475.00	651.52	8,623.54
September	2,787.93	389.41	3,960.00	475.00	772.84	8,385.18
October	2,284.90	464.24	3,960.00	475.00	666.47	7,850.61
November	1,810.00	807.42	3,960.00	475.00	529.18	7,581.59
December	1,279.05	1,158.00	3,960.00	475.00	382.82	7,254.86
Monthly Average	1,943.95	782.91	3,960.00	475.00	561.14	7,723.00

This Good Faith Estimate is provided for informational purposes only and represents our best effort to estimate the costs of the services described. Actual charges may vary based on your specific needs, usage, costs increases, unforeseen circumstances, or additional services requested. This estimate is not a contract or a guarantee of actual costs. If you have questions or require clarification regarding these amounts, please contact us.

Agent Contact Information

JIMMY DIEHL • O: 586.254.0900 x109 • C: 586.337.5241 • j.diehl@pilotpg.com
 ANTHONY RUBINO • O: 586.254.0900 x101 • C: 586.873.5419 • anthony@pilotpg.com

Offices in Sterling Heights and Port Huron to serve you
 586.254.0900 • www.pilotpg.com

GALLERY



Agent Contact Information

JIMMY DIEHL • O: 586.254.0900 x109 • C: 586.337.5241 • j.diehl@pilotpg.com
ANTHONY RUBINO • O: 586.254.0900 x101 • C: 586.873.5419 • anthony@pilotpg.com

Offices in Sterling Heights and Port Huron to serve you
586.254.0900 • www.pilotpg.com

GALLERY



Agent Contact Information

JIMMY DIEHL • O: 586.254.0900 x109 • C: 586.337.5241 • j.diehl@pilotpg.com
ANTHONY RUBINO • O: 586.254.0900 x101 • C: 586.873.5419 • anthony@pilotpg.com

Offices in Sterling Heights and Port Huron to serve you
586.254.0900 • www.pilotpg.com

GALLERY

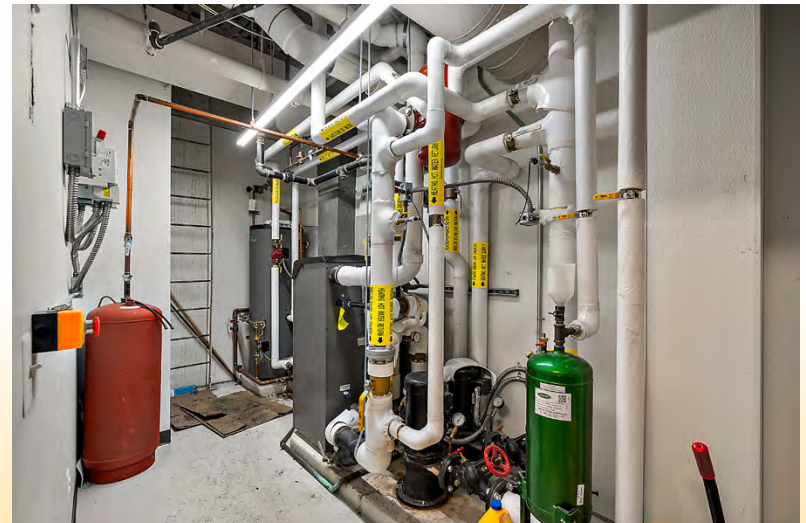


Agent Contact Information

JIMMY DIEHL • O: 586.254.0900 x109 • C: 586.337.5241 • j.diehl@pilotpg.com
ANTHONY RUBINO • O: 586.254.0900 x101 • C: 586.873.5419 • anthony@pilotpg.com

Offices in Sterling Heights and Port Huron to serve you
586.254.0900 • www.pilotpg.com

GALLERY



Agent Contact Information

JIMMY DIEHL • O: 586.254.0900 x109 • C: 586.337.5241 • j.diehl@pilotpg.com
ANTHONY RUBINO • O: 586.254.0900 x101 • C: 586.873.5419 • anthony@pilotpg.com

Offices in Sterling Heights and Port Huron to serve you
586.254.0900 • www.pilotpg.com