

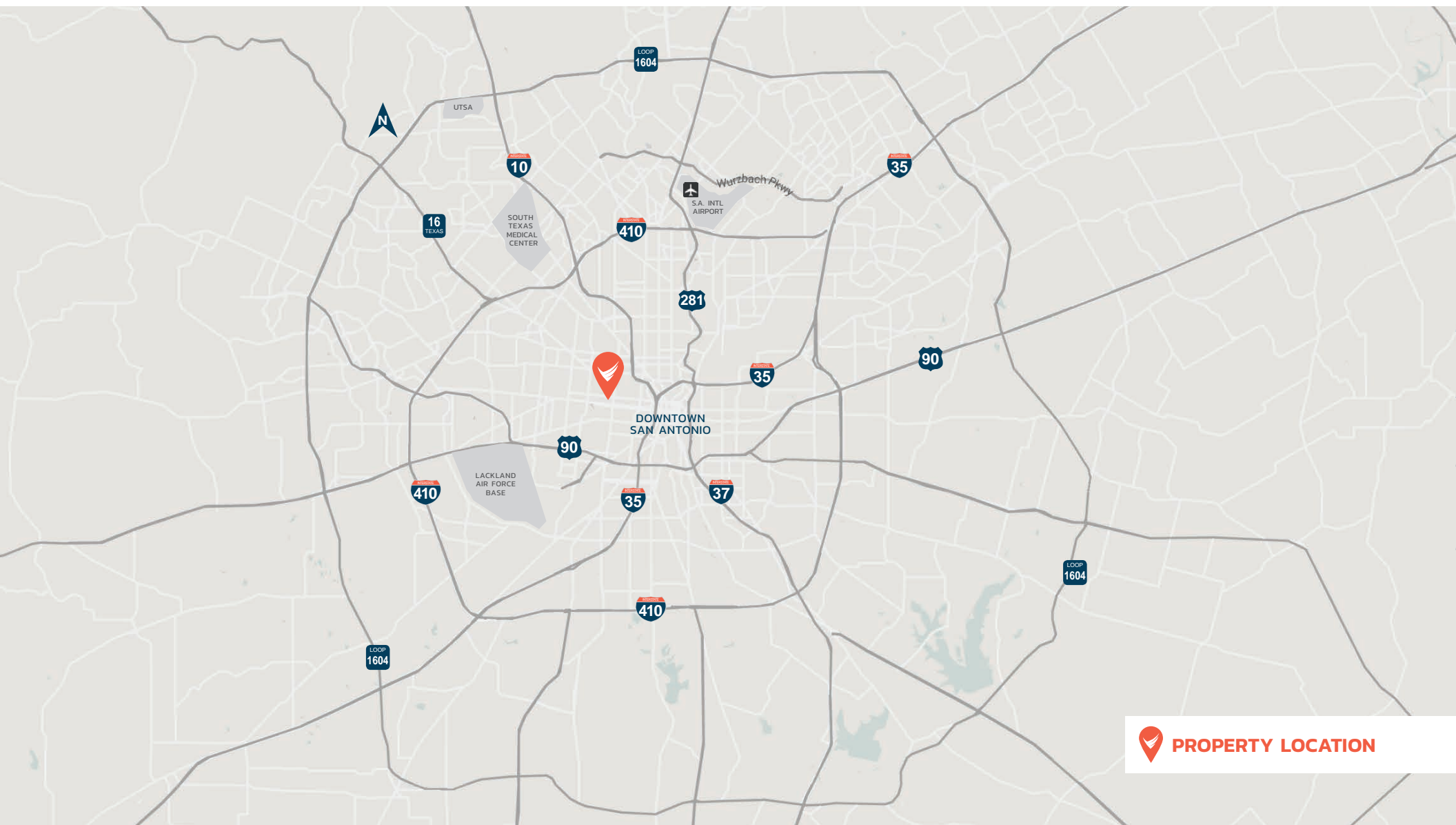


Located Near Downtown San Antonio

1811 W COMMERCE

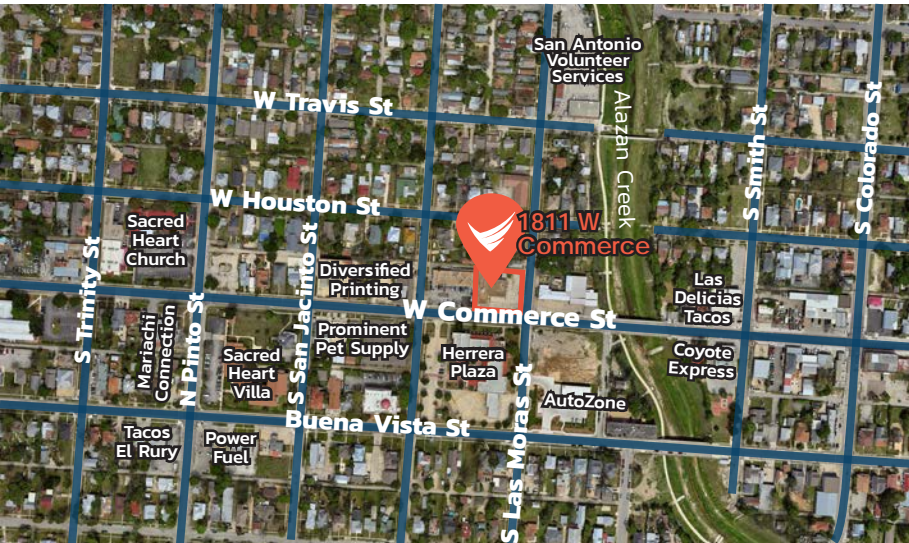
1811 W Commerce St,
San Antonio, Texas 78207

Rental Rate: Call For Pricing



Property Overview

1811 W COMMERCE



LAND AC 0.43

AVAILABLE SF 3,200 - 7,200

RENTAL RATE Call For Pricing

DEMOGRAPHICS

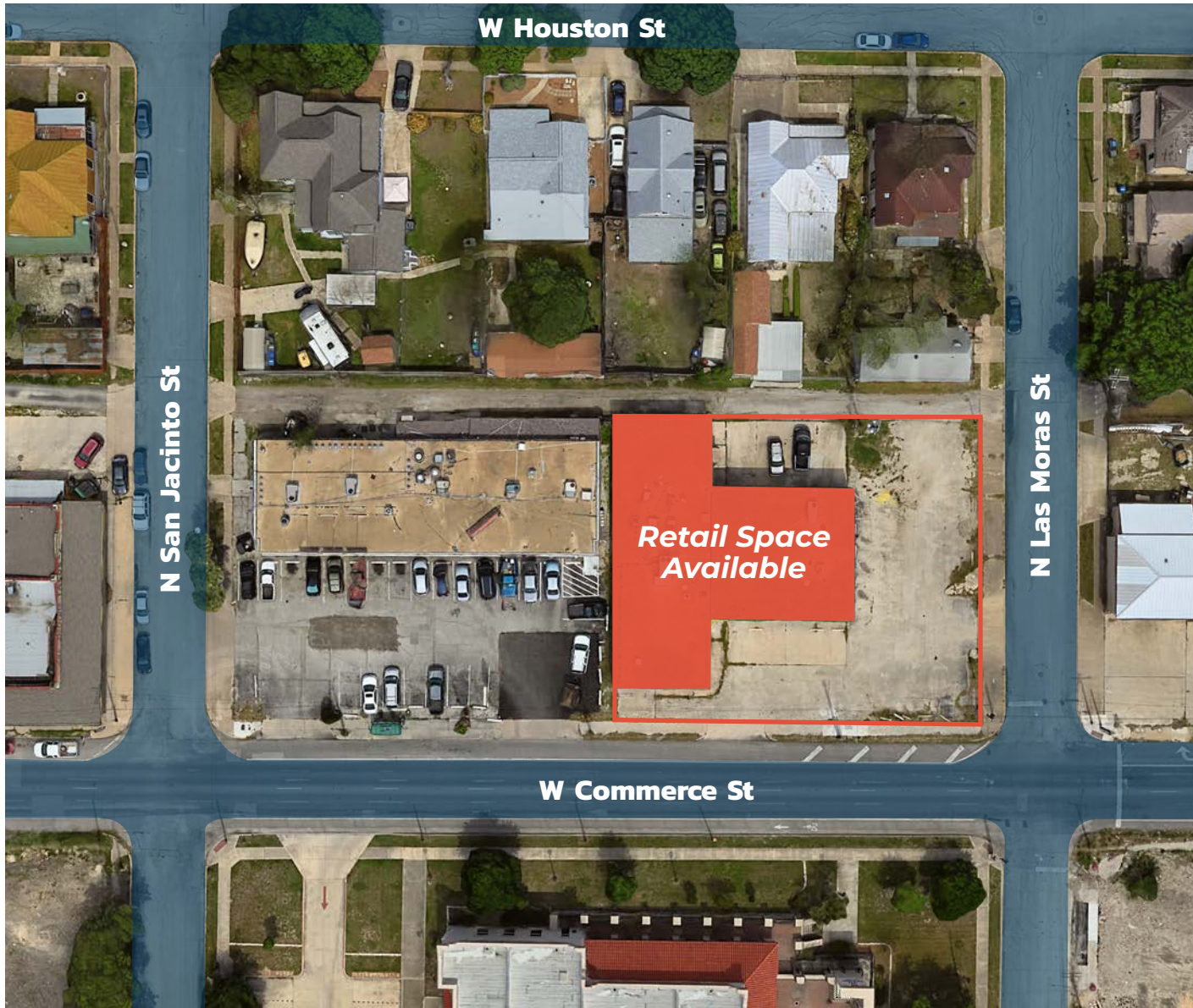
	1 Mile	3 Mile	5 Mile
Population:	23,621	167,058	393,898
Average HH Income:	\$33,693	\$56,036	\$56,024
Employees:	12,912	127,887	299,321

HIGHLIGHTS:

1811 W Commerce is a 7,200 SF standalone building located along the heavily-trafficked W Commerce St. The Property is near Lanier High School, Bexar Appraisal District, and UTSA Downtown Campus. Discover the ultimate location just minutes from Downtown San Antonio, the historic San Antonio Riverwalk and the iconic Pearl District.

Site Map

1811 W COMMERCE



SUITE	AVAILABLE SPACE
Building	3,200 4,000 7,200 SF

