

110 GREENWICH STREET

SW CORNER OF GREENWICH & CARLISLE STREETS | FIDI

RETAIL STORE FOR LEASE

110 GREENWICH STREET

SW CORNER OF GREENWICH & CARLISLE STREETS | FIDI

PROPERTY DETAILS:

SIZE:	4,500 SF Ground Floor 900 SF Lower Level
FRONTAGE:	141' wraparound
CEILING HEIGHT:	12'
POSSESSION:	Immediate
ASKING RENT:	Upon Request

HIGHLIGHTS:

- Situated at the base of a fully-amenitized luxury residential building with 60 units
- Adjacent to world-renowned architect Rafael Vinoly's latest masterpiece and supretall residential tower, The Greenwich, with 272 units
- Surrounded by multiple subway lines including **The Fulton Center** and **World Trade Center** transportation hubs
- Within walking distance to global fashion labels, indoor malls (*Brookfield Place, Westfield, South Street Seaport*), and food halls
- Neighboring tenants:

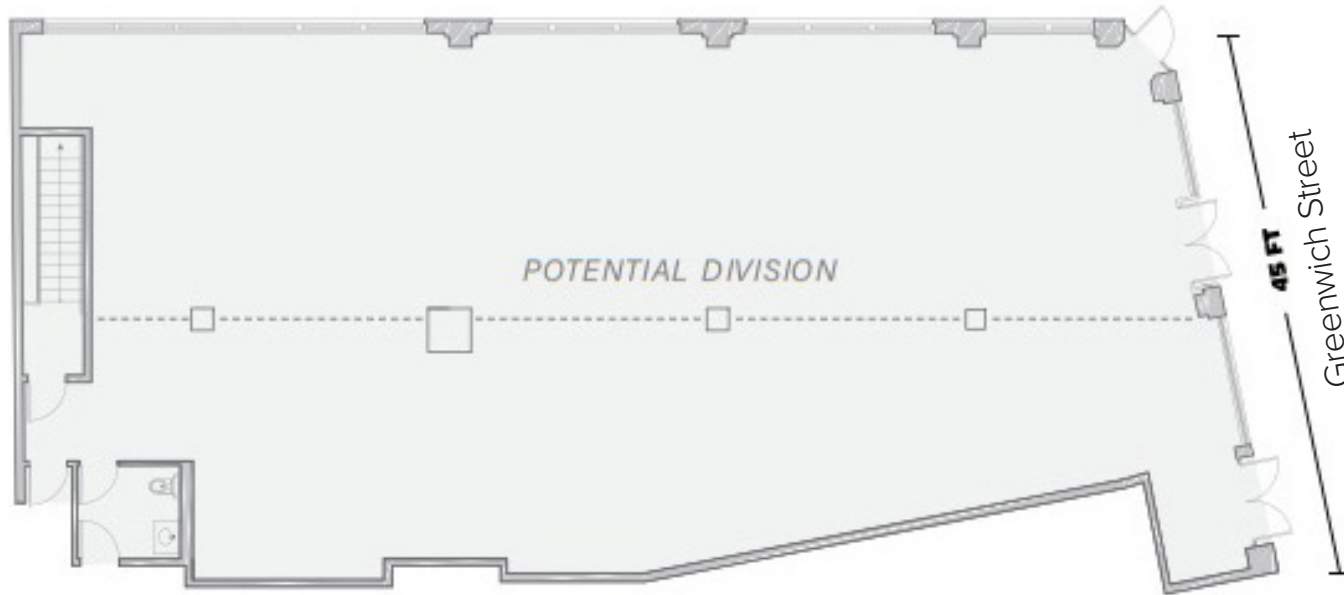


110 GREENWICH STREET

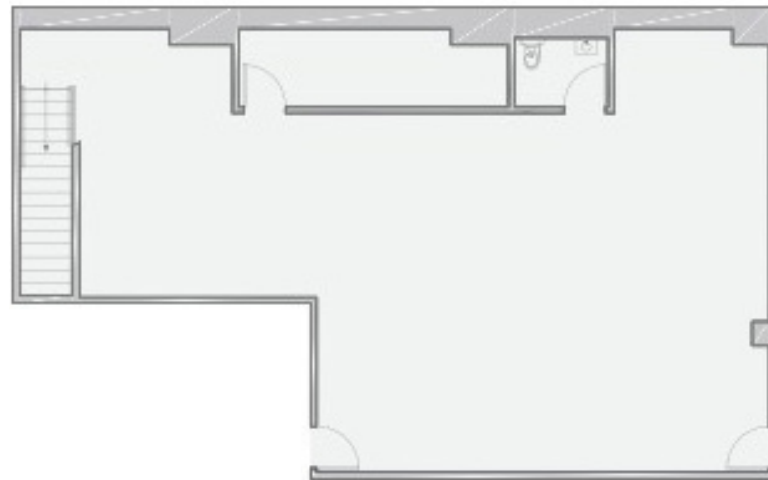
SW CORNER OF GREENWICH & CARLISLE STREETS | FIDI

Floor Plans:

Ground Floor: 4,500 SF



Lower Level: 900 SF



110 GREENWICH STREET

SW CORNER OF GREENWICH & CARLISLE STREETS | FIDI

FOR MORE INFORMATION,
PLEASE CONTACT:

SOPHIA GAINES

917.902.6352 | SGaines@ksrny.com

MARC SITT

917.531.0238 | MSitt@ksrny.com

ALBERT MANOPLA

212.380.8369 | AManopla@ksrny.com

