

# 218 NEWBURY



2,119 SF RETAIL SPACE AVAILABLE

**PRIME NEWBURY ST.**



# BUILDING

## PHOTOGRAPHY



218

# THE NEIGHBORHOOD

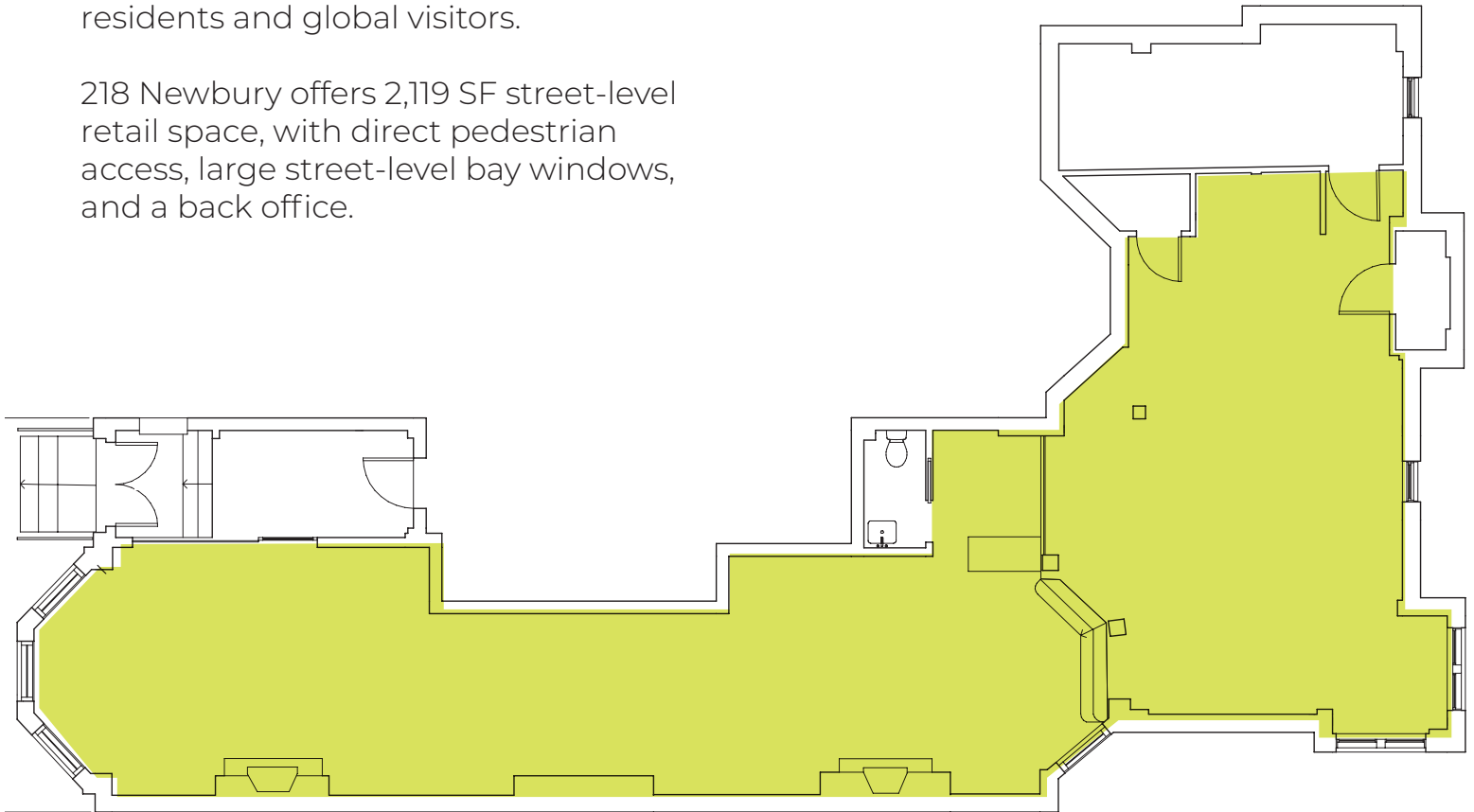


# AVAILABILITY

## 2,119 SF Retail Space Walk-Up

218 Newbury street is situated in the heart of Boston's primary shopping district. With hundreds of retailers and plenty more eateries, Newbury street remains a primary destination for local residents and global visitors.

218 Newbury offers 2,119 SF street-level retail space, with direct pedestrian access, large street-level bay windows, and a back office.



2,119 RSF

## 218 NEWBURY

Matt Curtin  
matt.curtin@nmrk.com  
617.548.4639

Greg Covey  
greg.covey@nmrk.com  
617.863.8459

Alden Bush  
alden.bush@nmrk.com  
781.799.8615

Nicole Nielsen  
nicole.nielsen@nmrk.com  
781.640.1577

NEWMARK