

RETAIL SPACE

1980 BROADWAY

Northeast corner of West 67th Street and Broadway at Lincoln Square

UPPER WEST SIDE

NEW YORK | NY

28,154 SF

For Lease



SPACE DETAILS

LOCATION

Northeast corner of West 67th Street and Broadway at Lincoln Square

SIZE

Ground Floor	2,415 SF
Lower Level 1	12,802 SF
Lower Level 2	12,937 SF
Total	28,154 SF

FRONTAGE

Broadway	28 FT 6 IN
West 67th Street	52 FT 6 IN

STATUS

Formerly Gracious Home

CEILING HEIGHTS

Ground Floor	20 FT 2 IN
Lower Level 1	13 FT 6 IN
Lower Level 2	12 FT 5 IN

RENT

Upon request

NEIGHBORS

Apple, AMC Lincoln Square Theaters, Banana Republic, Bed Bath & Beyond, Brooks Brothers, Century 21 Department Store, Chase Bank, Equinox, GAP, J Jill, Lululemon, Pottery Barn, Raymour & Flanigan, Zara

COMMENTS

1980 Broadway occupies a prime uptown corner on Broadway at West 67th Street

BUSINESS DRIVERS

Central Park, Lincoln Center, Julliard School, 1 Train at 66th Street

TRANSPORTATION

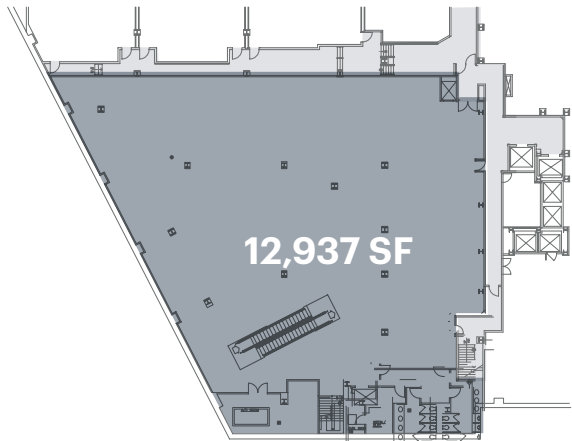
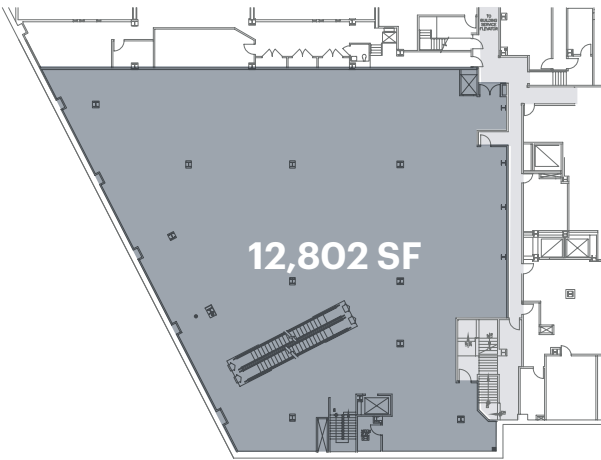
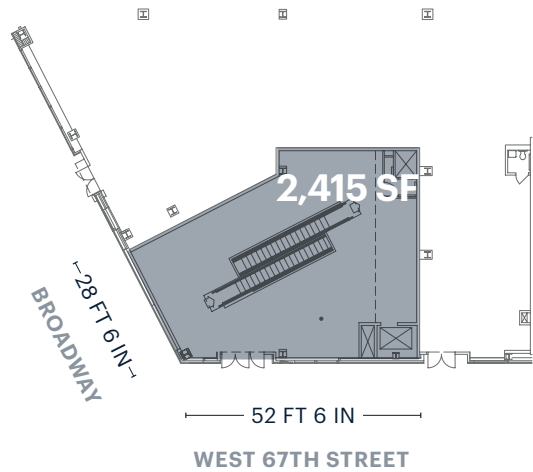
2019 Ridership Report

66th Street - Lincoln Center ¹	
Annual	7,068,256
Weekday	22,949
Weekend	22,510

GROUND FLOOR

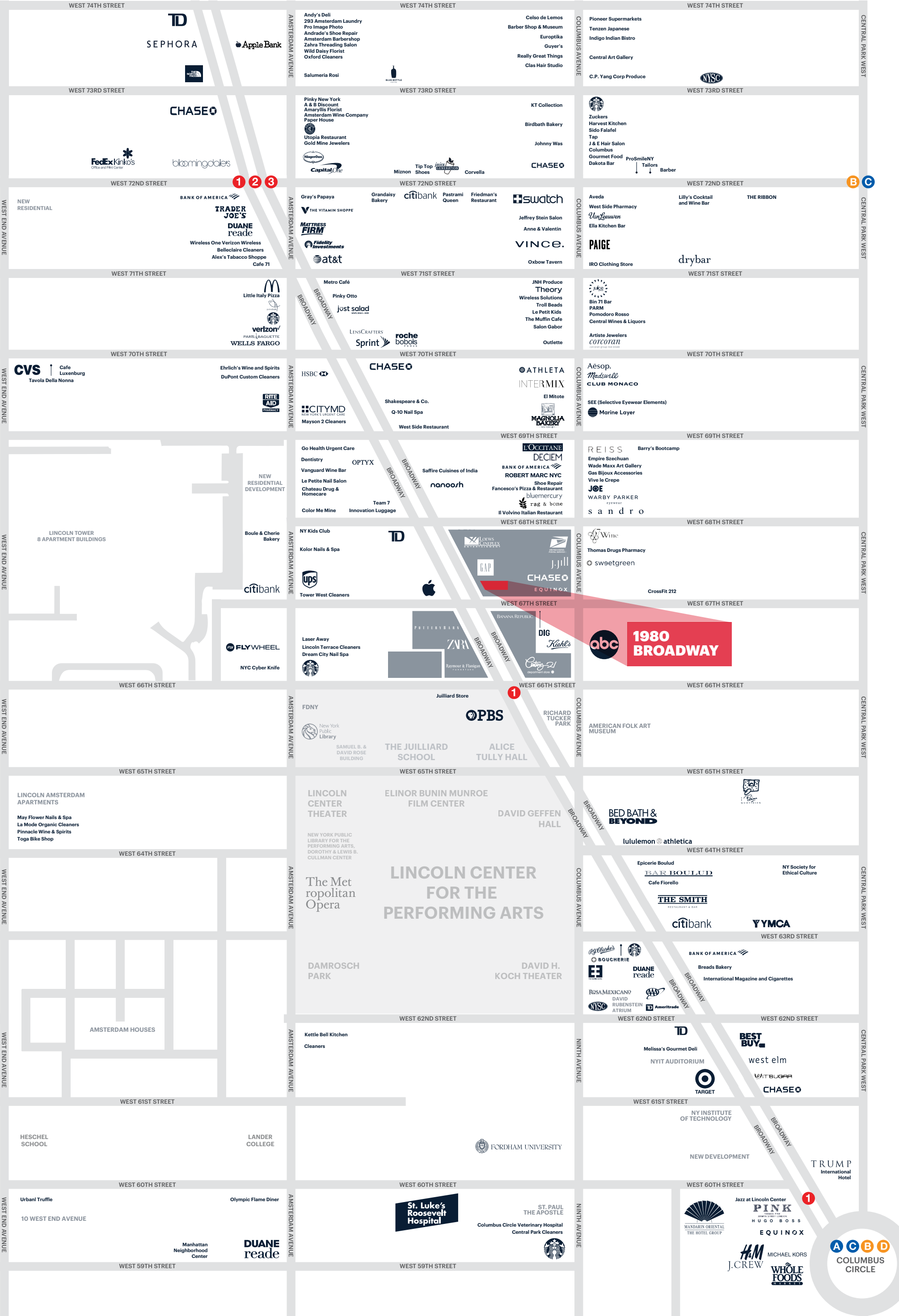
LOWER LEVEL 1

LOWER LEVEL 2

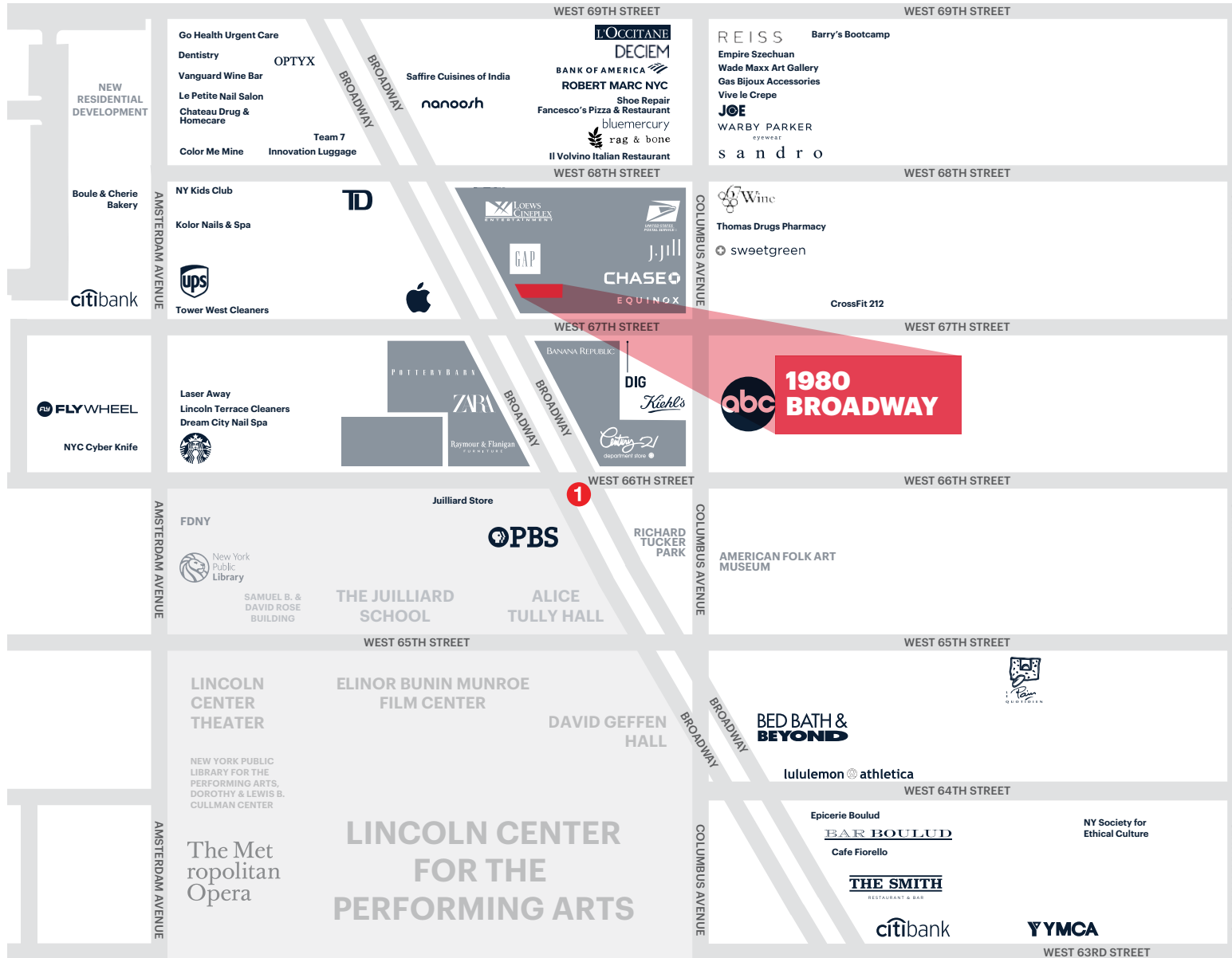


LINCOLN SQUARE NEIGHBORHOOD PHOTOS





AREA RETAIL



+ Coming Soon

Millennium Partners Lincoln Square Portfolio

RIPCO
REAL ESTATE

150 East 58th Street
15th Floor
New York, NY 10155
212.750.6565

Please visit us at ripcony.com for more information

This information has been secured from sources we believe to be reliable, but we make no representations as to the accuracy of the information. References to square footage are approximate. Buyer must verify the information and bears all risk for any inaccuracies.

MP MILLENNIUM PARTNERS

CONTACT EXCLUSIVE AGENTS

GENE SPIEGELMAN

gspiegelman@ripcony.com
212.219.7045

DOUG KLEIMAN

dkleiman@ripcony.com
646.827.9980

MORGAN SINGER

msinger@ripcony.com
212.230.5884