

2700 LINCOLN

2702 - 2710 Lincoln Way
Ames, IA 50014
www.cbre.com/desmoines

Available Space

- + Suite 2710
 - 1,470 SF
 - \$21.00/SF NNN
 - 2nd Generation restaurant space
- + Suite 2708
 - 3,955 SF
 - \$18.00/SF NNN
 - Recently constructed "turn-key" office space

Building Features

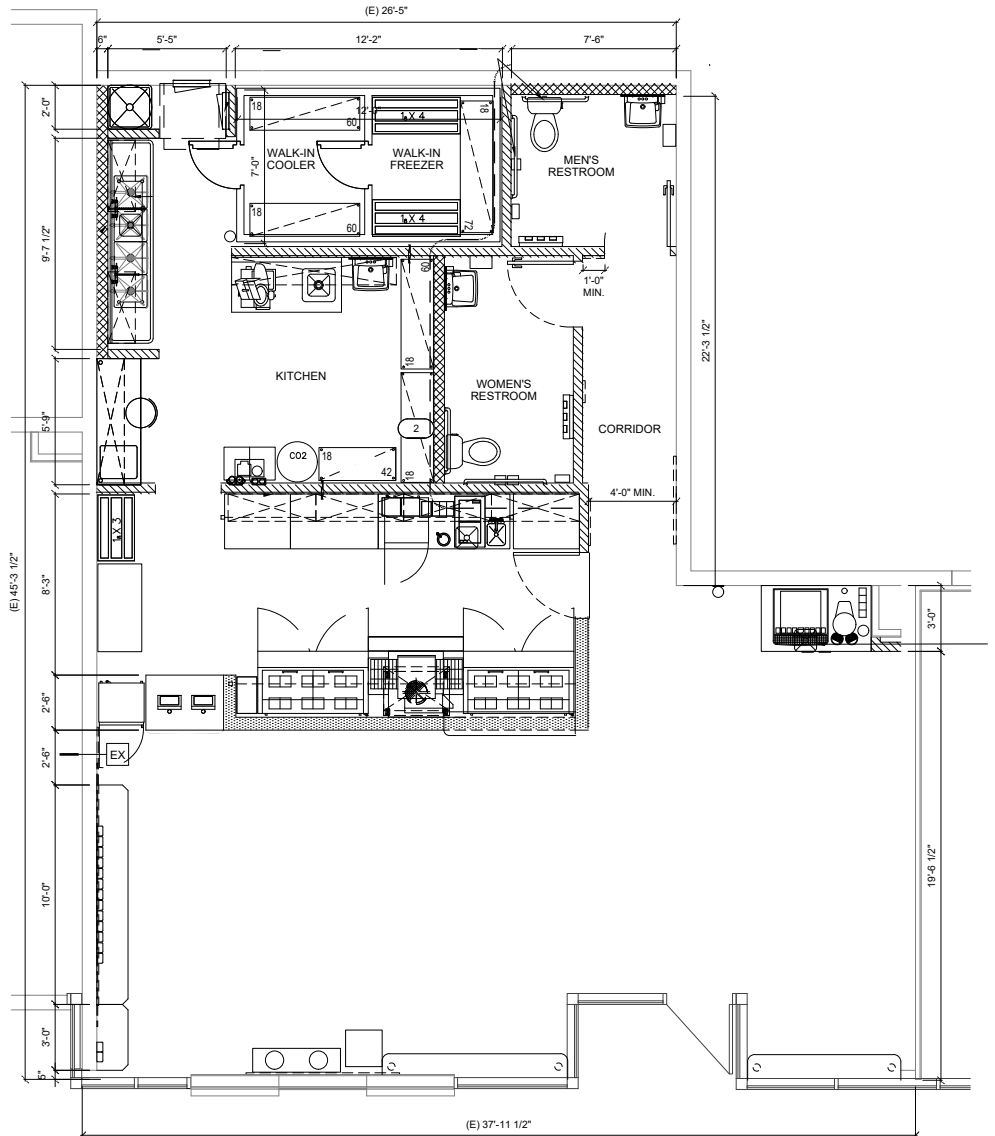
- + Mixed-use property with 177 units and 537 total beds
- + Co-tenant includes Roni's Mac Bar
- + OPEX : \$9.00/SF
- + Located in Ames Campus Town district
- + On-site surface parking in rear and nearby street parking

Turn-key spaces - short term or pop-up leases will be considered



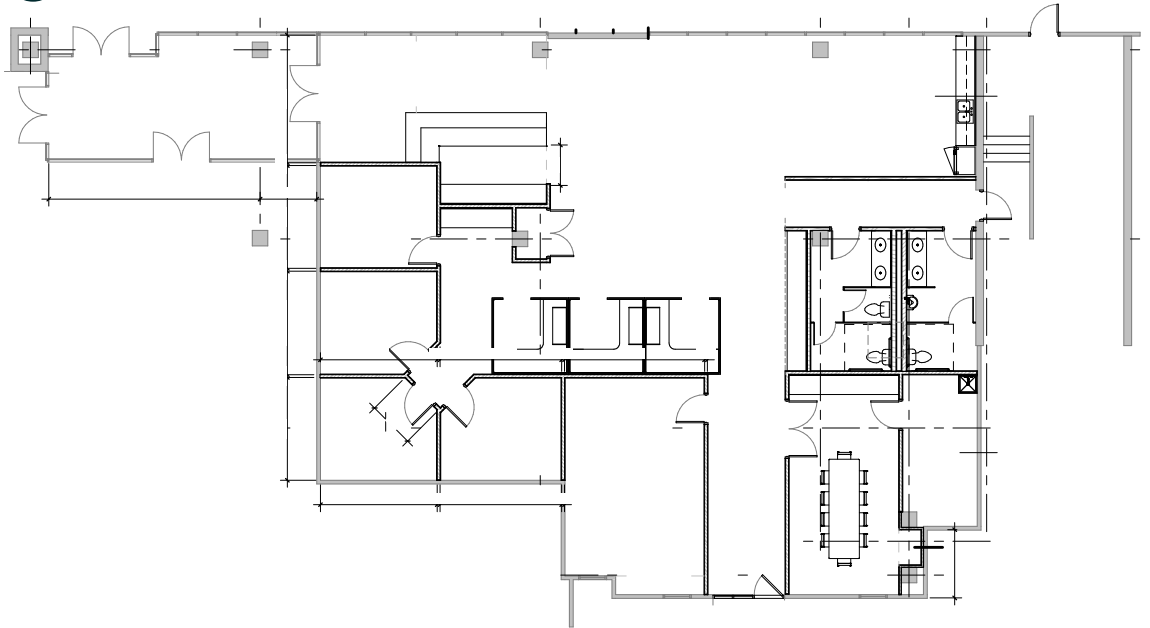
Suite 2710

- + Former sandwich shop
- + Kitchen/prep area with sink in rear of space
- + Two private restrooms
- + Walk-in cooler & freezer
- + Grease interceptor
- + Expansive storefront



Suite 2708

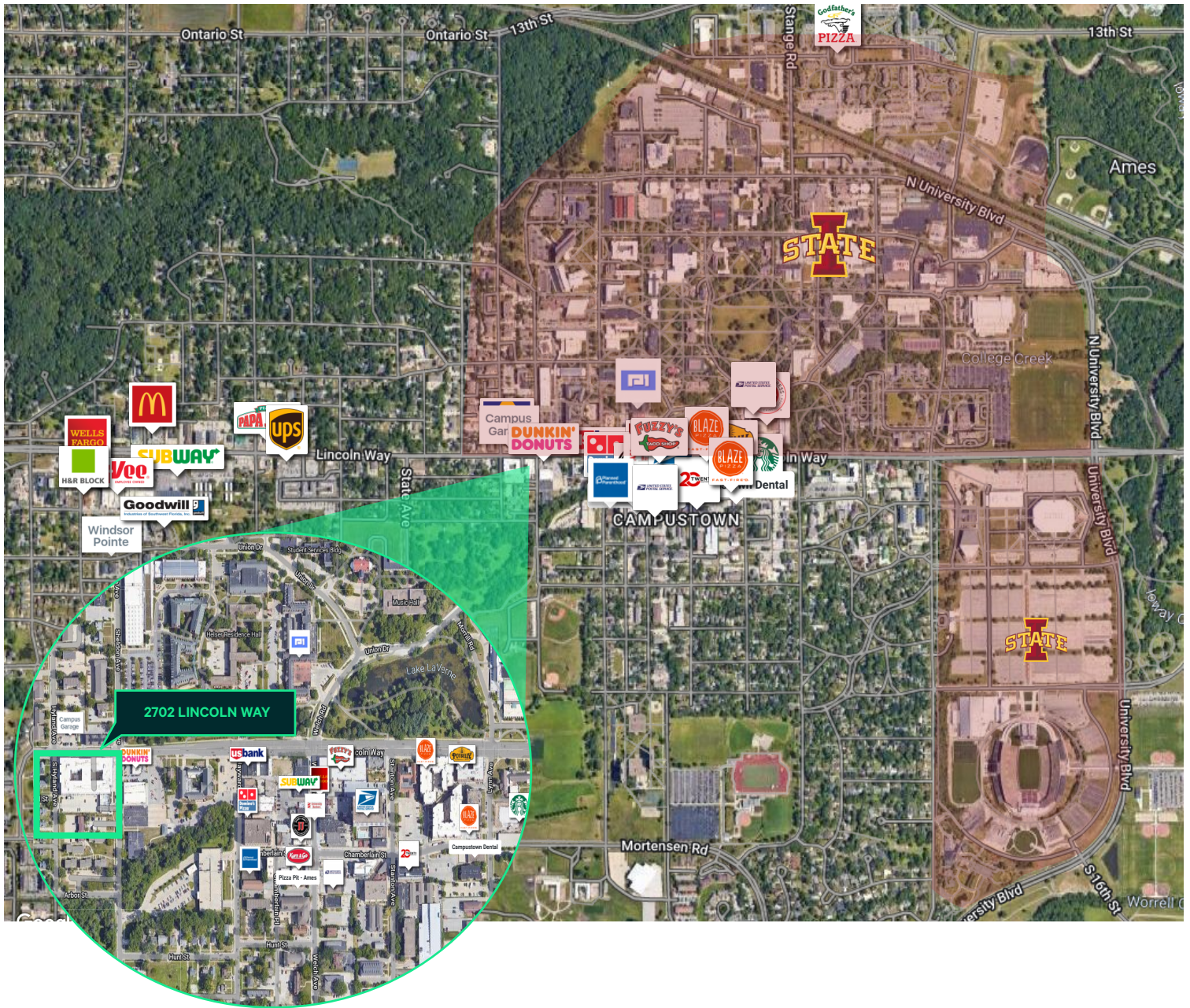
- + Reception
- + 3 private offices
- + Conference room
- + Break area/kitchenette
- + Open workstation space
- + Two private restrooms
- + Private outdoor patio



2700 Lincoln
2702 - 2710 Lincoln Way | Ames, IA 50014

For Lease

Location



Contact Us

Grant Wright, CCIM

First Vice President
+1 515 745 5113
grant.wright@cbre.com
Licensed in the State of Iowa.

Bill Wright

Senior Vice President
+1 515 210 3050
bill.wright2@cbre.com
Licensed in the State of Iowa.

Chris Pendroy, CCIM, SIOR

Senior Vice President
+1 515 402 6600
chris.pendroy@cbre.com
Licensed in the State of Iowa.

Dakota Little

Senior Associate
+1 515 745 4378
dakota.little@cbre.com
Licensed in the State of Iowa.

© 2024 CBRE, Inc. All rights reserved. This information has been obtained from sources believed reliable, but has not been verified for accuracy or completeness. You should conduct a careful, independent investigation of the property and verify all information. Any reliance on this information is solely at your own risk. CBRE and the CBRE logo are service marks of CBRE, Inc. All other marks displayed on this document are the property of their respective owners, and the use of such logos does not imply any affiliation with or endorsement of CBRE. Photos herein are the property of their respective owners. Use of these images without the express written consent of the owner is prohibited.