

76 ELM STREET WESTFIELD, NEW JERSEY



Retail for Lease - Contact

Robert Mackowski
Ph. 732-724-4089
rob@piersonre.com

PIERSON
COMMERCIAL REAL ESTATE®



DETAILS

Availability

- Ground
- Basement
- +/- 4,148 SF
- +/- 3,928 SF

Neighboring Tenants

Site Description

- Downtown Westfield is home to an affluent, established population with high household incomes, making it a prime location for national brands seeking to reach savvy, upscale consumers
- The subject site offers a premier flagship opportunity in the heart of Westfield's vibrant downtown retail corridor
- Features include expansive frontage, high ceilings and a fully sprinklered basement
- Positioned at a prime, high-visibility location at the main signalized intersection, ensuring maximum exposure to both foot and vehicle traffic
- Located just a 3-minute walk from the Westfield Train Station, offering easy access for commuters and regional visitors
- Surrounded by a dynamic mix of national retailers, boutiques and dining options, further enhancing the site's regional draw to a high-spending customer base

Demographics

Radius	Population	Total Daytime Population	Median HH Income	Median Age
1 Mile	16,972	19,430	\$148,149	41.9
3 Mile	165,240	161,254	\$113,691	41.6
5 Mile	430,631	406,342	\$109,507	40.9

76 ELM STREET

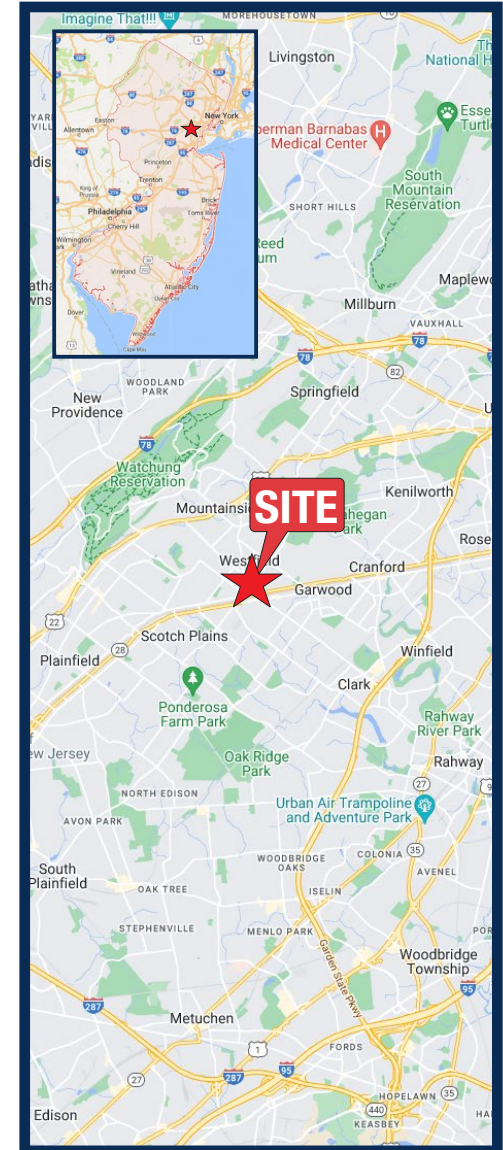
PIERSON
COMMERCIAL REAL ESTATE®

MARKET LOCATION

Immediate Surrounding Area



State Map

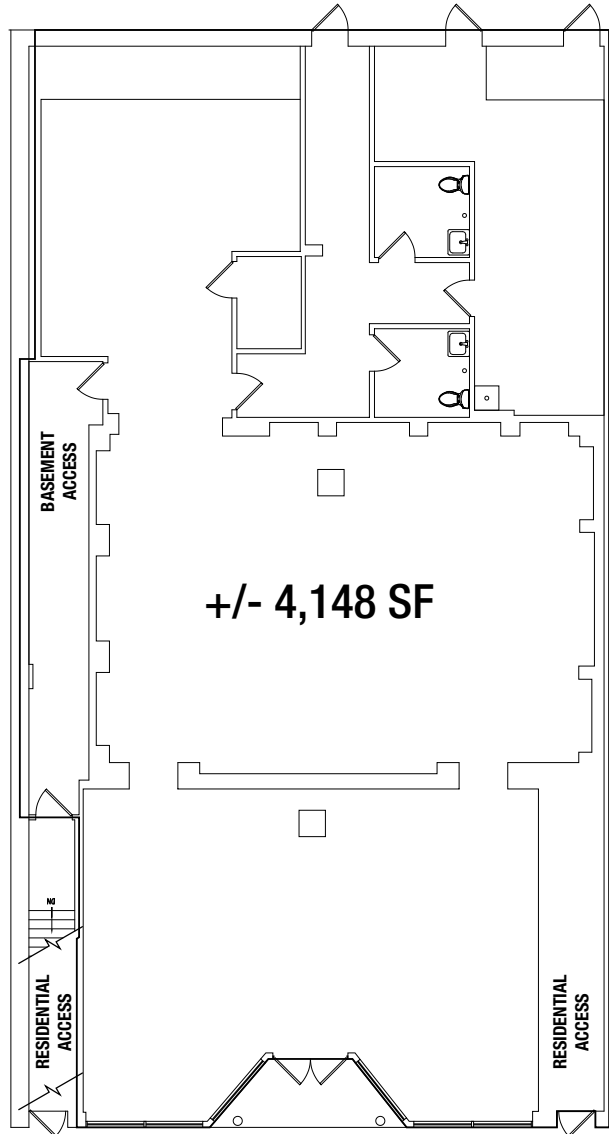


76 ELM STREET

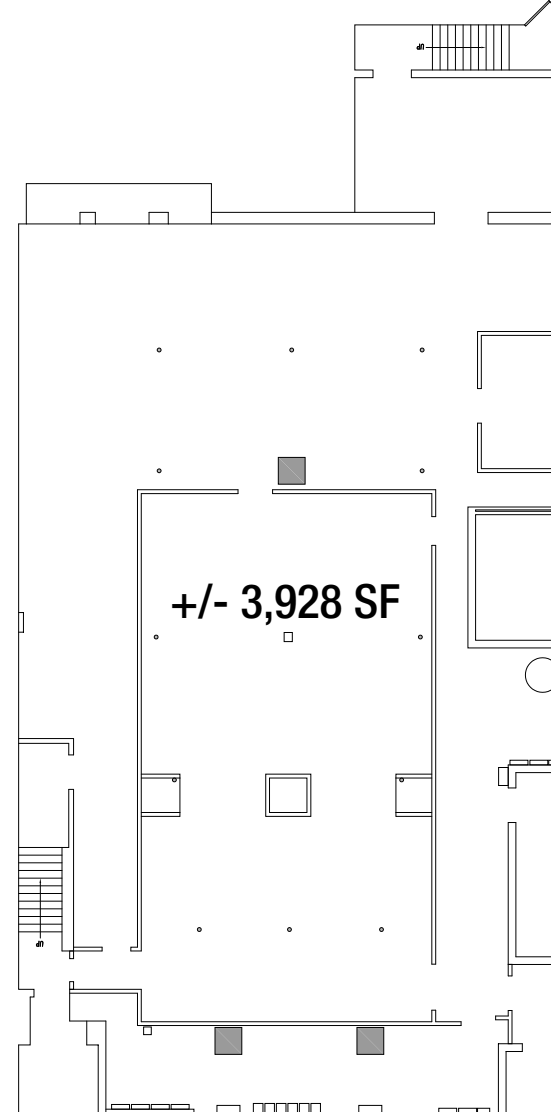
PIERSON
COMMERCIAL REAL ESTATE®

FLOOR PLANS

GROUND FLOOR



BASEMENT



ELM ST

76 ELM STREET

76 ELM STREET

**WESTFIELD,
NEW JERSEY**

CONTACT



Retail for Lease - Contact

Robert Mackowski

Ph. 732-724-4089

rob@piersonre.com

PIERSON
COMMERCIAL REAL ESTATE®

© Pierson Commercial Real Estate LLC. This information has been obtained from sources believed reliable. We have not verified it and make no guarantee, warranty or representation about it. Any renderings, projections, opinions, assumptions or estimates used are for example only and do not represent the current or future performance of the property. You and your advisors should conduct a careful, independent investigation of the property to determine to your satisfaction the suitability of the property for your needs.