



Meadows & Ohly

Buckhead's Healthcare Hub

371 East Paces Ferry | Atlanta, GA

5,193 SF AVAILABLE FOR SUBLEASE

SPACE DELIVERED IN OCTOBER 2022

MOVE IN READY

FURNITURE AVAILABLE

CREDIT SUBLANDLORD

FLOORPLAN & OVERVIEW

BUILDING HIGHLIGHTS

- 7 floors of medical offices above
- 2 floors of retail & lobby areas
- 4.3/1,000 parking ratio
- Direct access from garage to first five floors
- 4 elevators: 3 passenger and 1 service

TOTAL AVAILABLE

5,193 RSF

TERM

Through 7/31/2033

BUILDING LOCATION

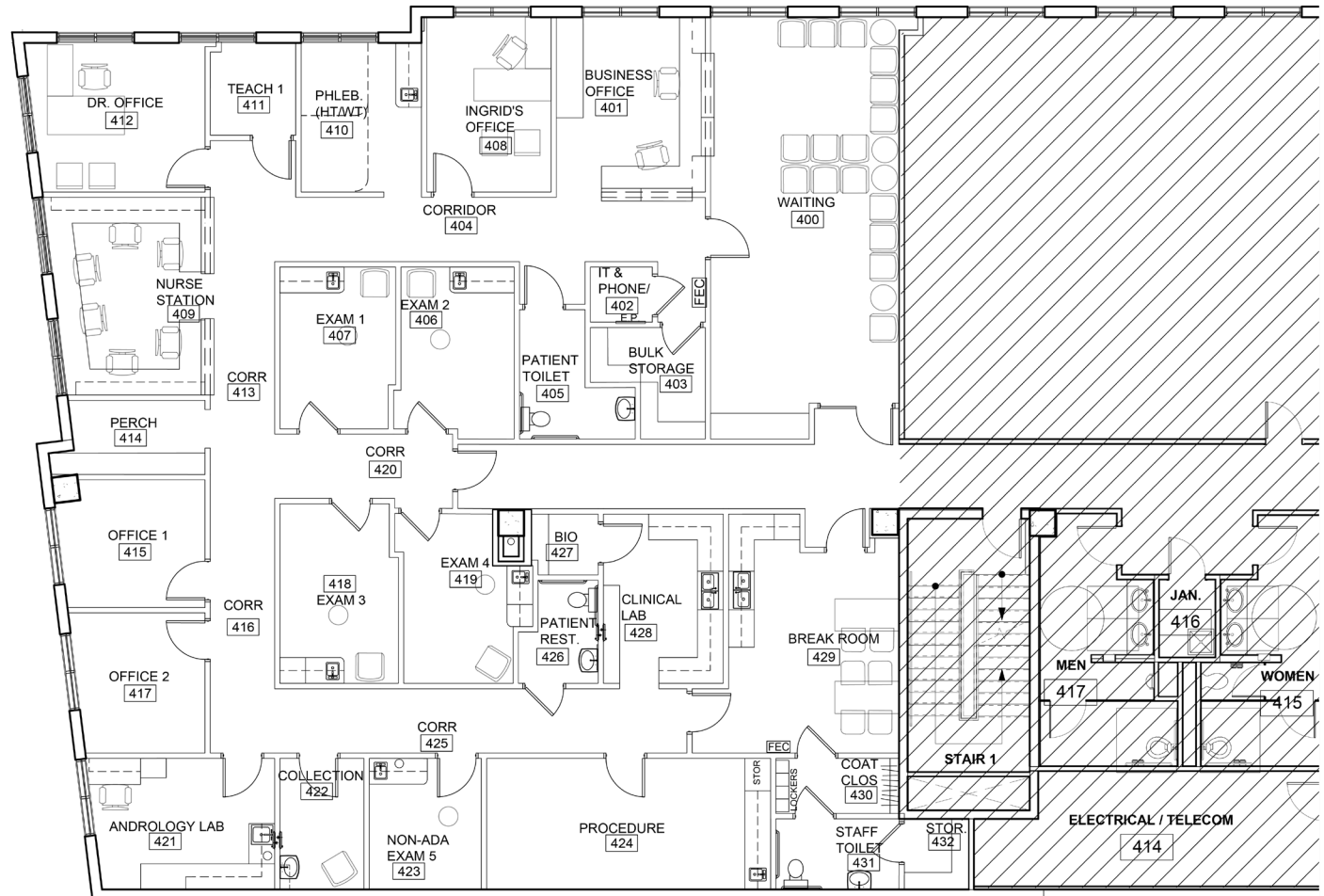
4th Floor

LEASE RATE

Negotiable

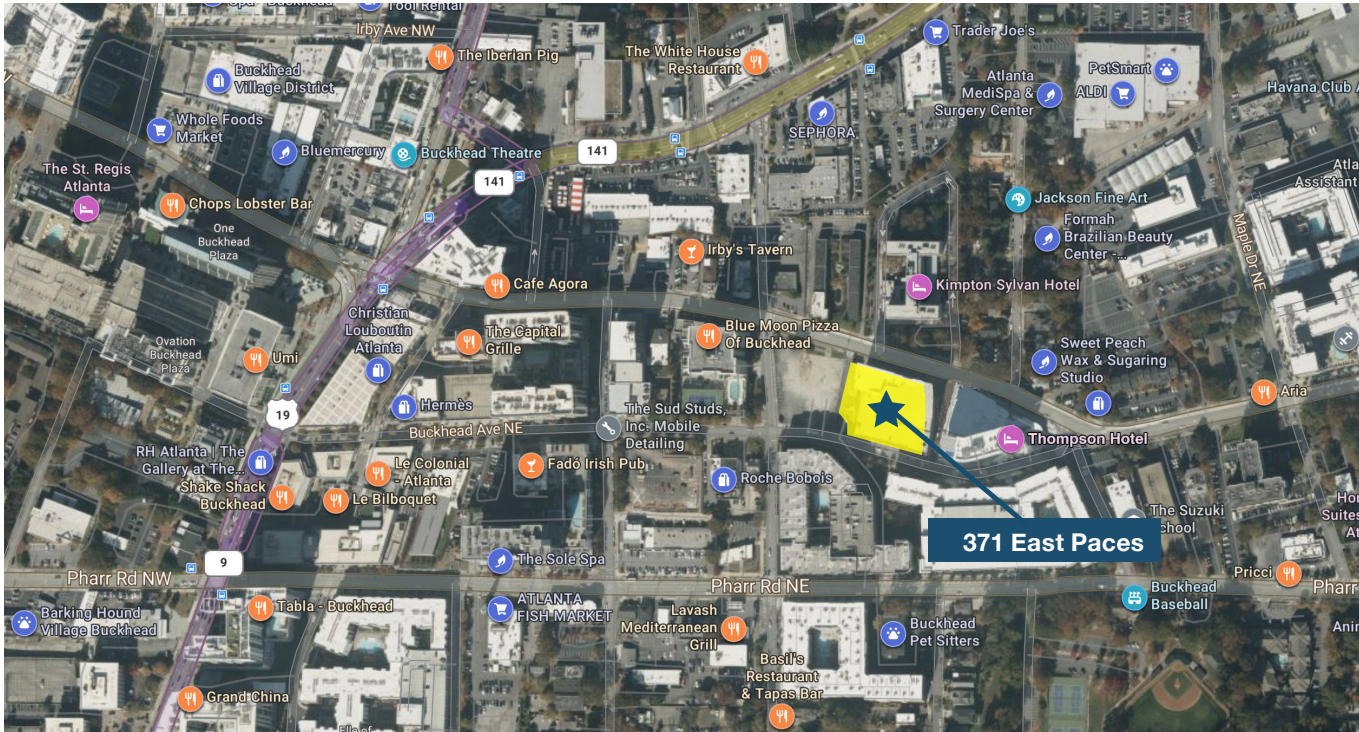
FURNITURE

Available



SUITE 400 PHOTOS





Walkscore

92



Amenities

350



Average HH Income

\$124,513



New Units

9,000+



Daytime Population

290,000+

Meadows & Ohly

For more information on the 371 East Paces Ferry opportunity, please contact:

George Olmstead

Senior Vice President, Brokerage Services

(470)-740-2791

george.olmstead@meadowsandohly.com

