



**HINMAN**  
DEVELOPMENT ♦ MANAGEMENT ♦ LEASING

OFFICE SPACE FOR LEASE  
**2600 HORIZON**

2600 HORIZON DRIVE SE | GRAND RAPIDS, MI 49546



2600 HORIZON

## OFFICE SPACE FOR LEASE

# 2600 HORIZON

2600 HORIZON DRIVE SE | GRAND RAPIDS, MI 49546

2600 HORIZON IS A 2-STORY, 30,725 SF OFFICE BUILDING LOCATED IN THE CASCADE OFFICE PARK, A HIGHLY VISIBLE CAMPUS STYLE SETTING ALONG I-96 COMPRISING OF SIX OFFICE BUILDINGS. THIS BUILDING OFFERS OPEN FLOORPLATES AND AN AMPLE AMOUNT OF PARKING. 2600 HORIZON DRIVES CENTRAL LOCATION OFFERS EASY ACCESS TO I-96, M-6 & THE 28TH STREET RETAIL CORRIDOR.



SUBURBAN OFFICE  
PARK SETTING,  
PROFESSIONALLY  
MANAGED



MULTIPLE RETAIL &  
DINING OPTIONS  
WITHIN AREA



CONVENIENT &  
FREE EMPLOYEE /  
VISITOR PARKING



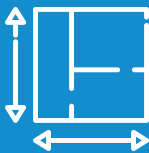
REGIONAL  
LOCATION WITH  
EASY ACCESS TO  
I-96 & M-6



24 HOUR ACCESS



7 MINUTE DRIVE TO  
GERALD R. FORD  
INTERNATIONAL  
AIRPORT



FLEXIBILITY TO  
HANDLE FUTURE  
SPACE NEEDS  
WITHIN PARK



THE RAPID BUS  
STOP LOCATED IN  
FRONT OF  
OFFICE PARK



HIGHLY VISIBLE  
LOCATION VIEWED  
BY 29,000,000  
VEHICLES PER YEAR

LEASING //

HINMANCOMPANY.COM



**KIRK DRIESENKA**  
REGIONAL DIRECTOR OF LEASING  
616.301.2731  
[KIRKD@HINMANCOMPANY.COM](mailto:KIRKD@HINMANCOMPANY.COM)



**JAKE BURNHAM**  
LEASING MANAGER  
269.488.3664  
[JAKE@HINMANCOMPANY.COM](mailto:JAKE@HINMANCOMPANY.COM)

# OFFICE SPACE FOR LEASE

## 2600 HORIZON

2600 HORIZON DRIVE SE | GRAND RAPIDS, MI 49546



PHOTOS INTENDED ONLY AS A BUILD OUT REFERENCE



LEASING //

[HINMANCOMPANY.COM](http://HINMANCOMPANY.COM)



**KIRK DRISENGA**  
REGIONAL DIRECTOR OF LEASING  
616.301.2731  
[KIRKD@HINMANCOMPANY.COM](mailto:KIRKD@HINMANCOMPANY.COM)



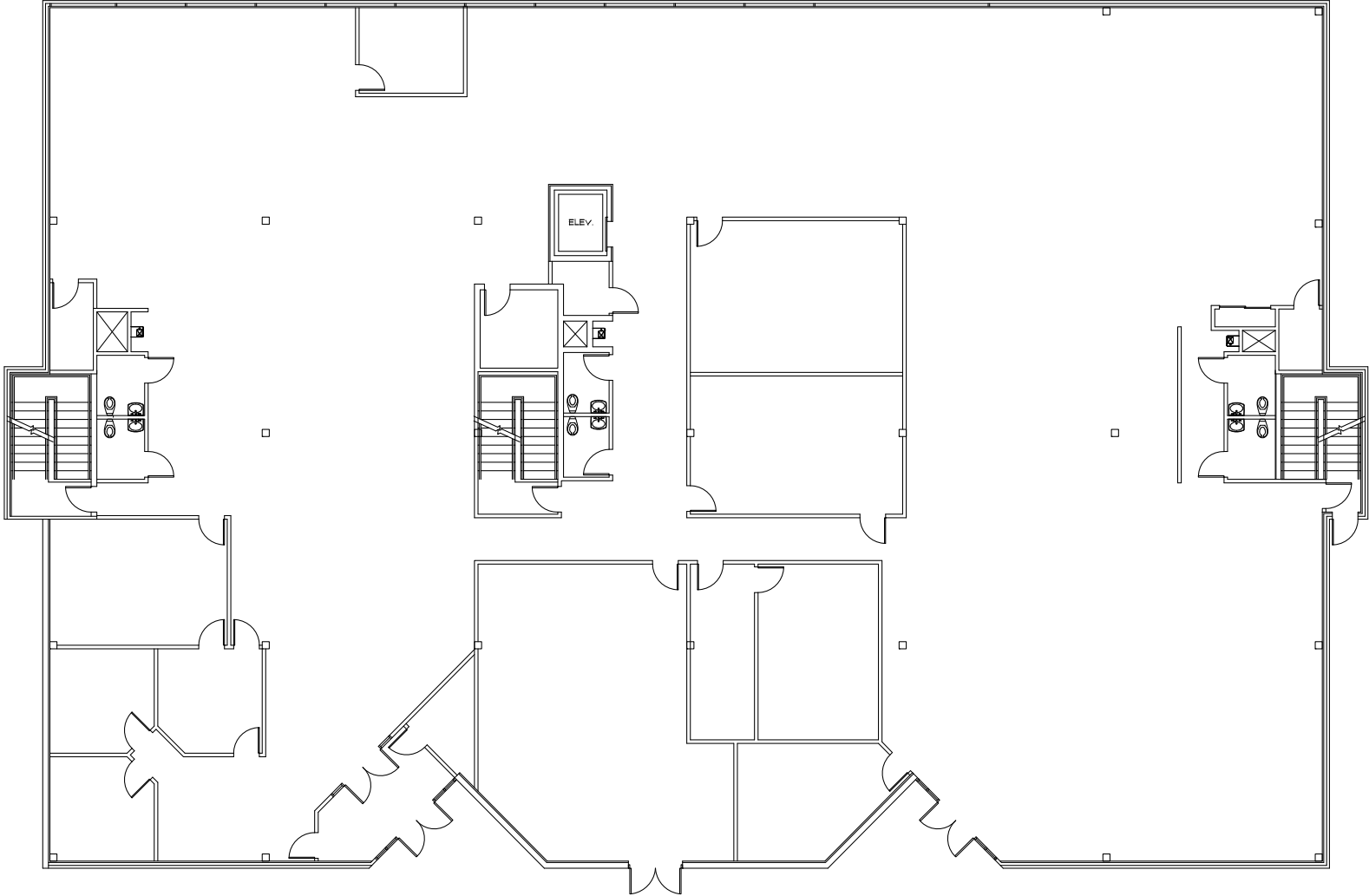
**JAKE BURNHAM**  
LEASING MANAGER  
269.488.3664  
[JAKE@HINMANCOMPANY.COM](mailto:JAKE@HINMANCOMPANY.COM)

# OFFICE SPACE FOR LEASE

## 2600 HORIZON

2600 HORIZON DRIVE SE | GRAND RAPIDS, MI 49546

SUITE 100 | 14,237 SF



LEASING //

[HINMANCOMPANY.COM](http://HINMANCOMPANY.COM)



**KIRK DRIESENKA**  
REGIONAL DIRECTOR OF LEASING  
616.301.2731  
[KIRKD@HINMANCOMPANY.COM](mailto:KIRKD@HINMANCOMPANY.COM)



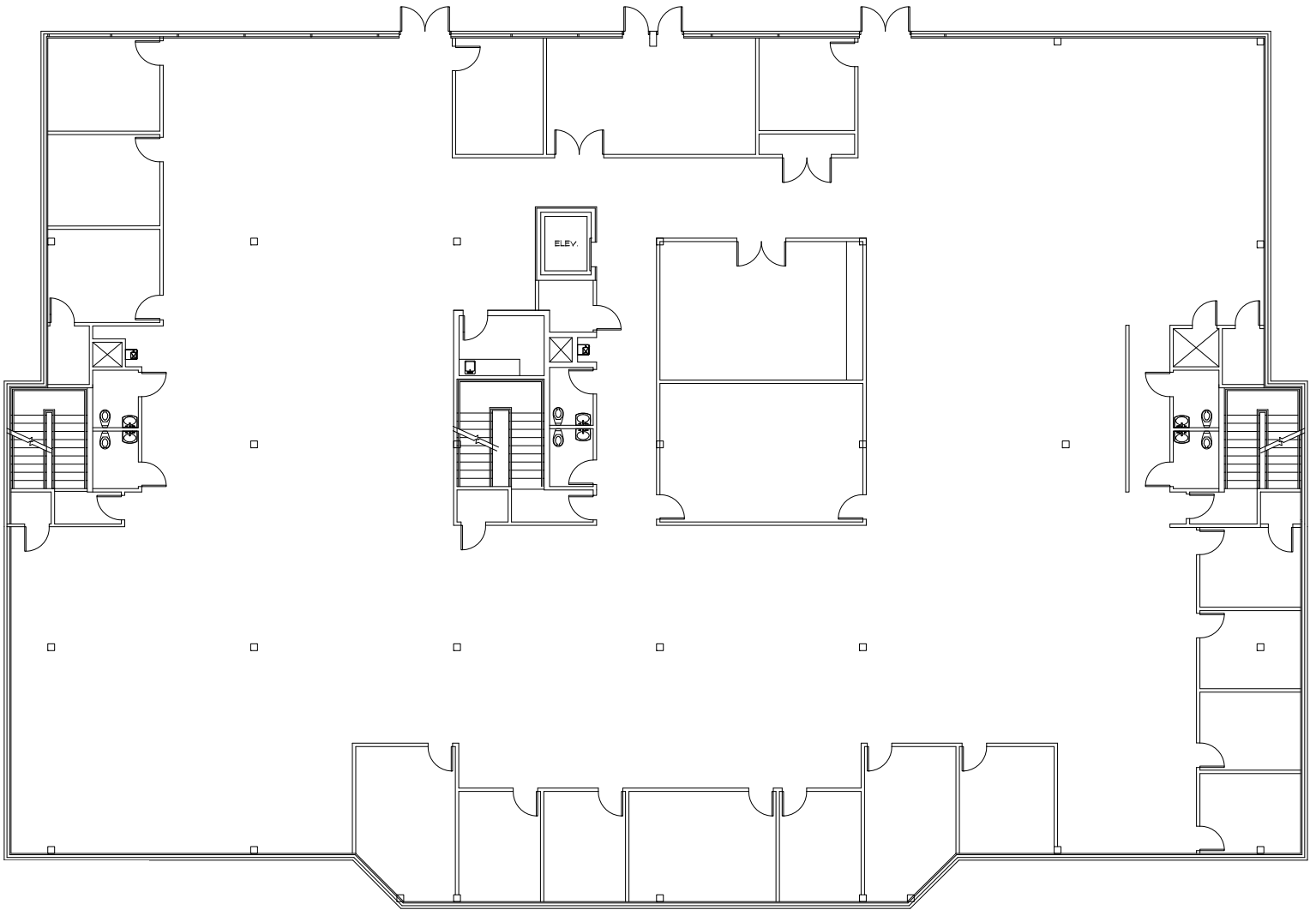
**JAKE BURNHAM**  
LEASING MANAGER  
269.488.3664  
[JAKE@HINMANCOMPANY.COM](mailto:JAKE@HINMANCOMPANY.COM)

# OFFICE SPACE FOR LEASE

## 2600 HORIZON

2600 HORIZON DRIVE SE | GRAND RAPIDS, MI 49546

SUITE 200 | 15,160 SF



LEASING //

[HINMANCOMPANY.COM](http://HINMANCOMPANY.COM)



**KIRK DRIESENKA**  
REGIONAL DIRECTOR OF LEASING  
616.301.2731  
[KIRKD@HINMANCOMPANY.COM](mailto:KIRKD@HINMANCOMPANY.COM)

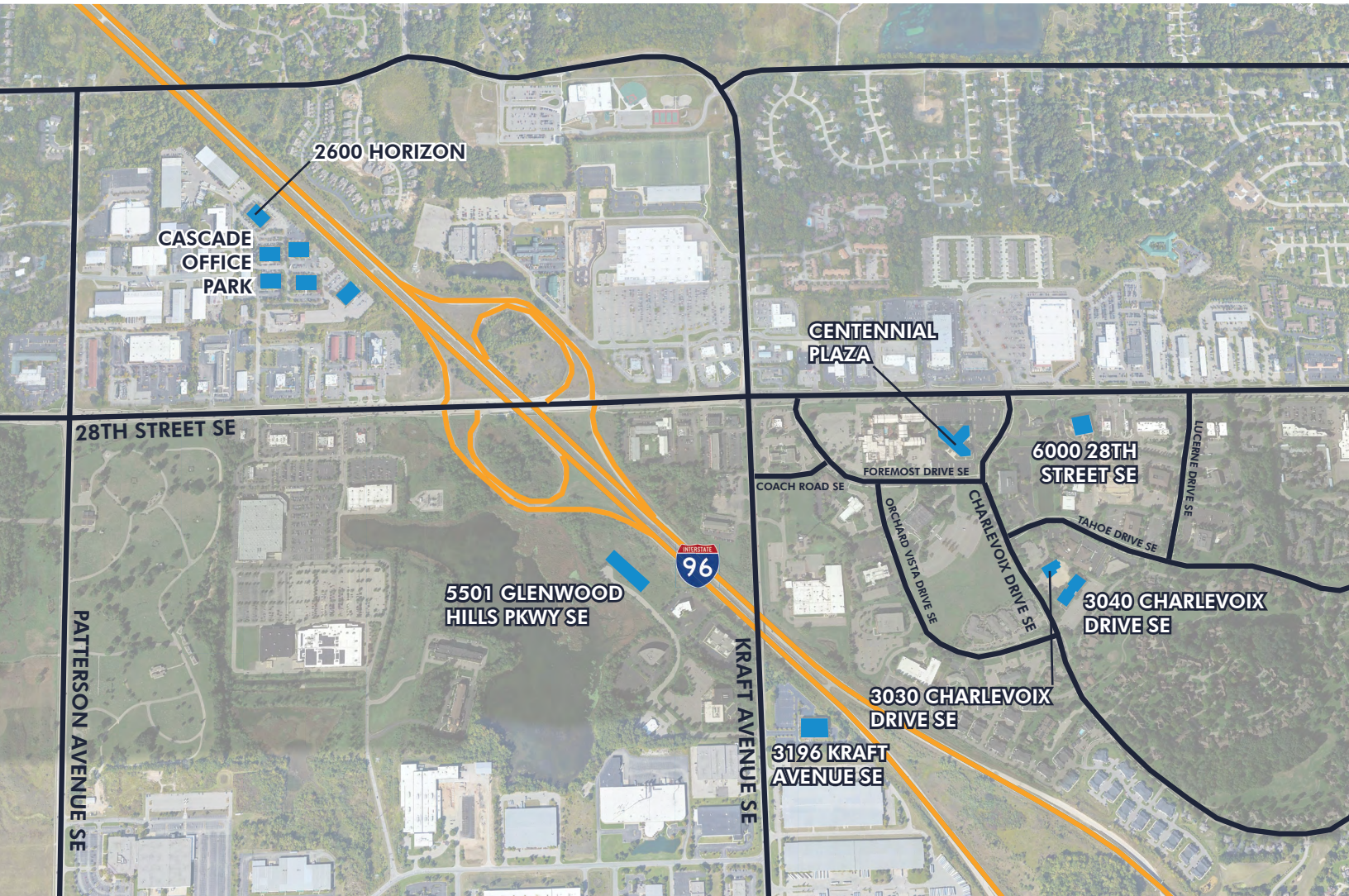


**JAKE BURNHAM**  
LEASING MANAGER  
269.488.3664  
[JAKE@HINMANCOMPANY.COM](mailto:JAKE@HINMANCOMPANY.COM)

## LOCATION

# 2600 HORIZON

2600 HORIZON DRIVE SE | GRAND RAPIDS, MI 49546



LEASING //

[HINMANCOMPANY.COM](http://HINMANCOMPANY.COM)



**KIRK DRISENGA**  
REGIONAL DIRECTOR OF LEASING  
616.301.2731  
[KIRKD@HINMANCOMPANY.COM](mailto:KIRKD@HINMANCOMPANY.COM)



**JAKE BURNHAM**  
LEASING MANAGER  
269.488.3664  
[JAKE@HINMANCOMPANY.COM](mailto:JAKE@HINMANCOMPANY.COM)

# GRAND RAPIDS MARKET OVERVIEW

## 2600 HORIZON

2600 HORIZON DRIVE SE | GRAND RAPIDS, MI 49546

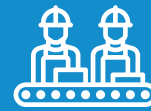
GRAND RAPIDS IS HOME TO ONE OF THE FASTEST GROWING ECONOMIES IN THE UNITED STATES.



REGIONAL  
POPULATION OF  
1,606,562



MORE THAN 130  
INTERNATIONAL  
COMPANIES



\$80.2 BILLION  
GROSS REGIONAL  
PRODUCT



14 COLLEGES AND  
UNIVERSITIES



UNEMPLOYMENT  
RATE OF 2.9%



COST OF LIVING  
IS 3% LOWER  
THAN NATIONAL  
AVERAGE



HIGHWAY SYSTEM  
OFFERS MULTI-  
REGIONAL  
ACCESSIBILITY



AVERAGE 22  
MINUTE TRAVEL  
TIME FOR MOST  
COMMUTERS



140+ DAILY  
FLIGHTS TO 35  
MAJOR MARKETS  
VIA GRR AIRPORT

## RECOGNITIONS

- RANKED #1 AMERICA'S HOTTEST ZIP CODE BY **REALTOR.COM**
- RANKED #2 TOP DESTINATIONS FOR MILLENIALS BY **NATIONAL ASSOCIATION OF REALTORS**
- RANKED #7 FASTEST GROWING ECONOMY IN THE U.S. BY **FORBES**
- RANKED #13 TOP PLACES TO LIVE BY **U.S. NEWS & WORLD REPORT**
- RANKED TOP 20 "SUPERSTAR" CITIES IN THE U.S. BY **REUTERS**

LEASING //

**HINMANCOMPANY.COM**



**KIRK DRIESENKA**  
REGIONAL DIRECTOR OF LEASING  
616.301.2731  
[KIRKD@HINMANCOMPANY.COM](mailto:KIRKD@HINMANCOMPANY.COM)



**JAKE BURNHAM**  
LEASING MANAGER  
269.488.3664  
[JAKE@HINMANCOMPANY.COM](mailto:JAKE@HINMANCOMPANY.COM)