

# FOR LEASE

1553 W Todd Dr  
Tempe, AZ 85283

Grove Parkway Court

CBRE



# FOR LEASE

1553 W Todd Dr  
Tempe, AZ 85283

## PROPERTY DETAILS

- Office Space For Lease
  - » ±734 SF to ±3,113 SF available
- Available Suites
  - » 106 ±1,658 SF
  - » 107 ±3,118 SF
  - » 109 ±734 SF
- \$25.75/SF Full Service
- Recently updated suites and common areas
- Central located directory sign



Covered Reserved  
and Surface Parking



Near I-10, US 60  
Loop 101 & 202



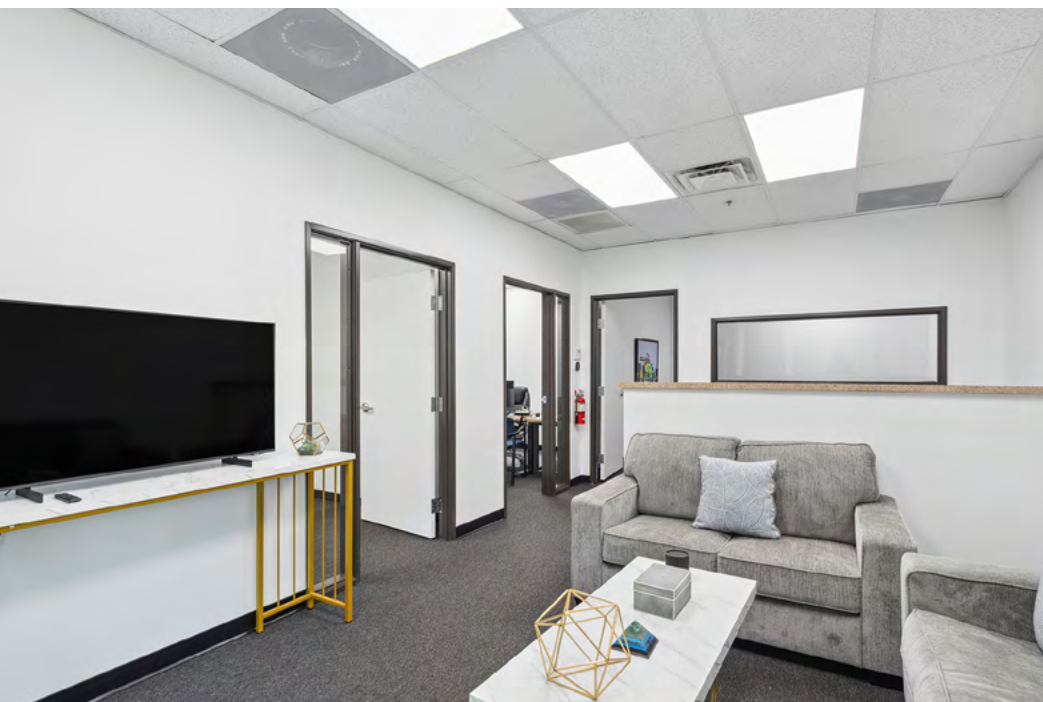
Surrounded by  
retail & dining

Grove Parkway Court

CBRE



# FOR LEASE



Grove Parkway Court | 1553 W Todd Dr | Tempe, AZ 85283

**CBRE**

FOR LEASE





# FLOOR PLANS



**FOR LEASE**

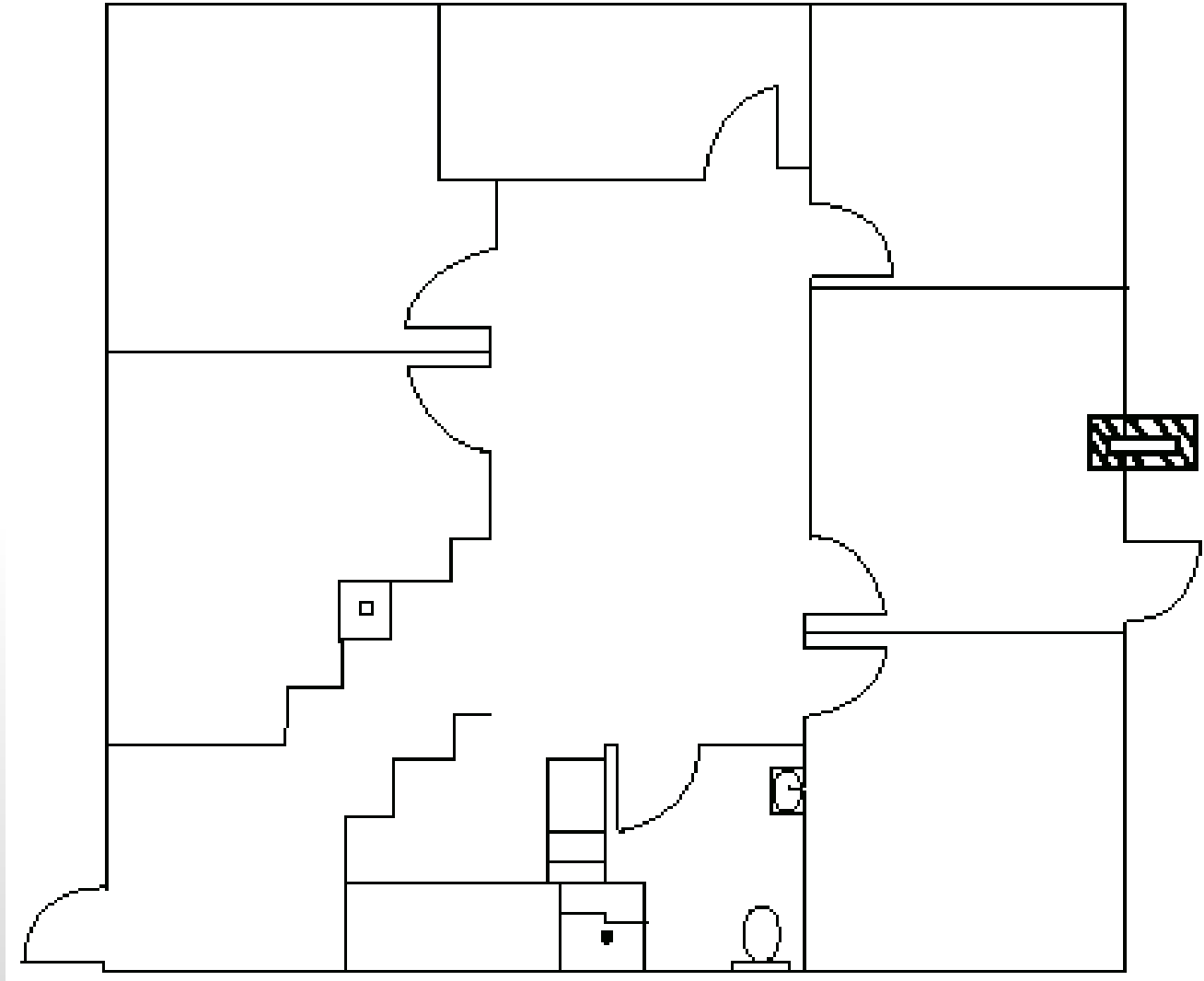
Grove Parkway Court | 1553 W Todd Dr | Tempe, AZ 85283

**CBRE**

FLOOR PLANS

Suite 106 ±1,658 SF

FOR LEASE



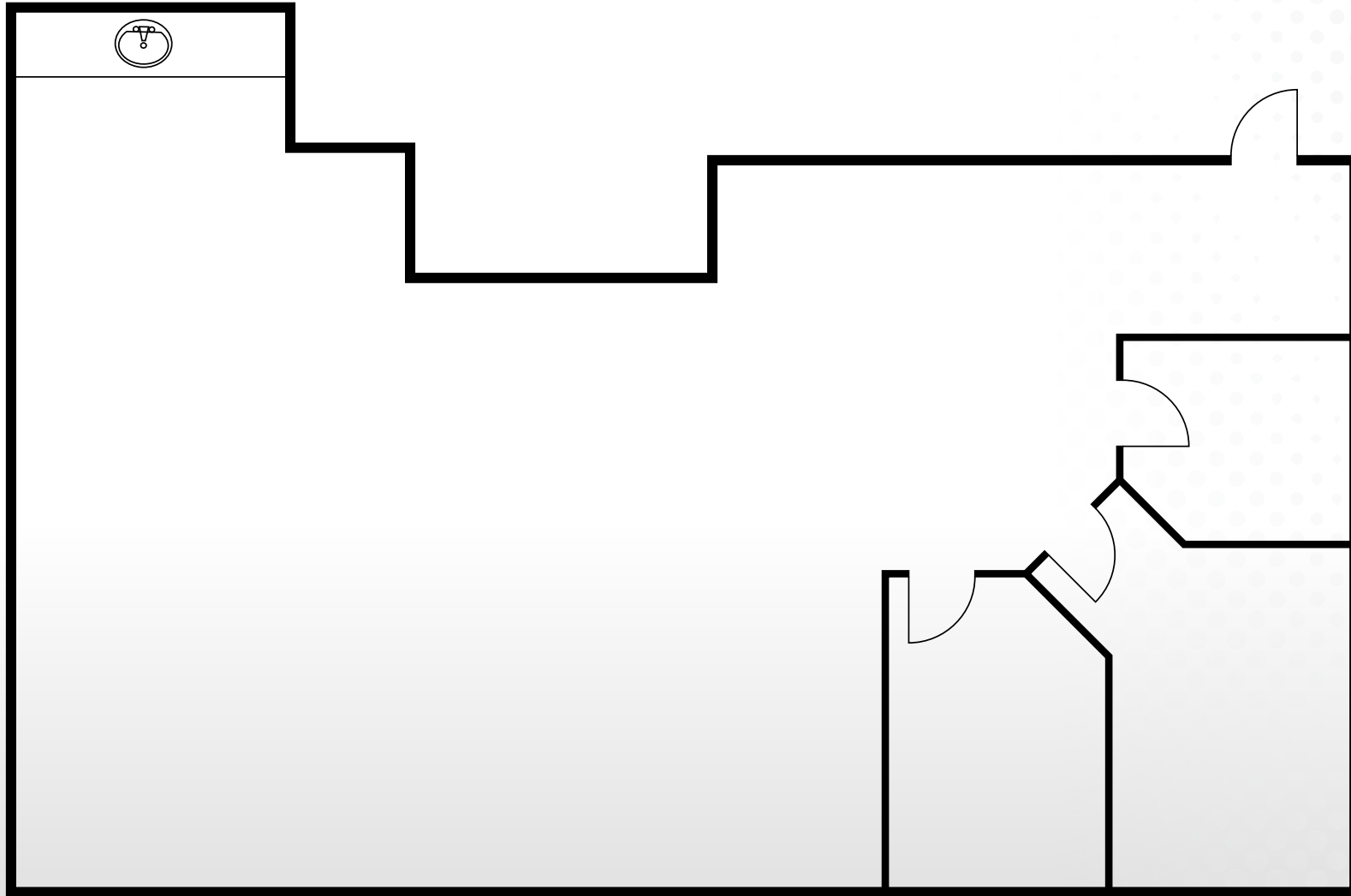


FLOOR PLANS

Suite **107** ±3,113 SF

**FOR LEASE**

[CLICK HERE  
to view](#)

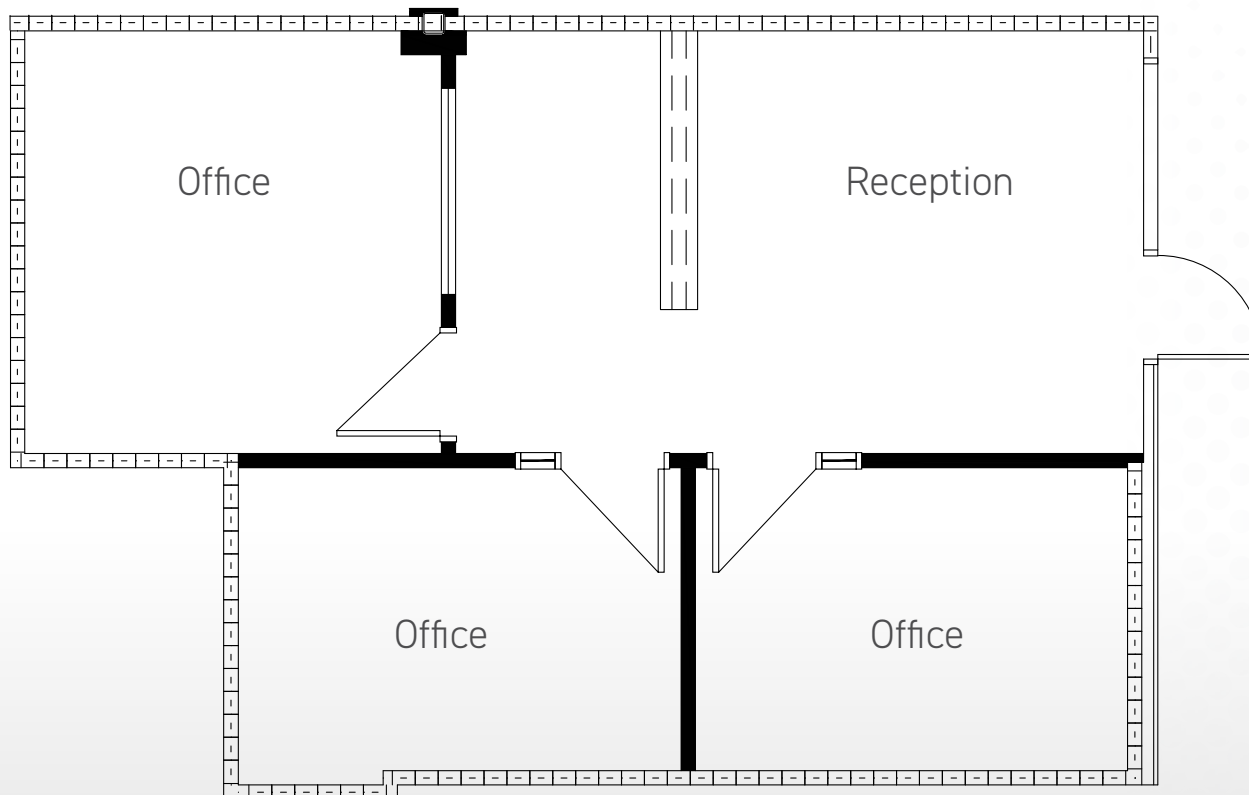


FLOOR PLANS

Suite **109** ±734 SF

**FOR LEASE**

[CLICK HERE  
to view](#)





1553  
W TODD DR

Todd Dr



1553  
W TODD DR

Todd Dr



1553  
W TODD DR

Todd Dr



**1553**  
W TODD DR

# FOR LEASE

1553 W Todd Dr  
Tempe, AZ 85283

## CONTACT US

**Jamie Swirtz**

+1 602 735 5630

[jamie.swirtz@cbre.com](mailto:jamie.swirtz@cbre.com)

**Courtney Boyle**

+1 602 735 5218

[courtney.boyle@cbre.com](mailto:courtney.boyle@cbre.com)

© 2024 CBRE, Inc. All rights reserved. This information has been obtained from sources believed reliable, but has not been verified for accuracy or completeness. You should conduct a careful, independent investigation of the property and verify all information. Any reliance on this information is solely at your own risk. CBRE and the CBRE logo are service marks of CBRE, Inc. All other marks displayed on this document are the property of their respective owners, and the use of such logos does not imply any affiliation with or endorsement of CBRE. Photos herein are the property of their respective owners. Use of these images without the express written consent of the owner is prohibited.

**Grove Parkway Court**

**CBRE**