



# ***St. Petersburg Medical Center*** **FOR LEASE OR SALE**

6201 DR. MLK JR. ST. S.  
ST. PETERSBURG, FL 33705



NED WILLIS  
NWILLIS@VECTORREALTY.COM  
(727) 481-3356

**VECTOR**  
COMMERCIAL REAL ESTATE SERVICES



# EXECUTIVE SUMMARY

## INTRODUCTION

The medical office building, totaling 2,796 square feet, is situated on the southwest corner of the signalized intersection of Dr. MLK Jr. St. S. and 62nd Avenue S. A recently retired dentist has vacated his 1,647 SF space. This building comes equipped with exam rooms and plumbing throughout. It is located in a high-growth area of St. Petersburg and is ideally suited for a dental/medical practice. Other potential uses for the space include a spa, salon, law office, and veterinary office. Available lease space is 1,647 SF. A chiropractor currently occupies 1,149 SF.



### PRICE

1,647 SF (For Lease)  
\$20 PSF  
2,796-SF (For Sale)  
\$600,000



### PROPERTY SIZE

2,796-Square Feet



### MEDICAL BUILDOUT

6 Operative/Exam Rooms



Ample Parking



Monument Signage



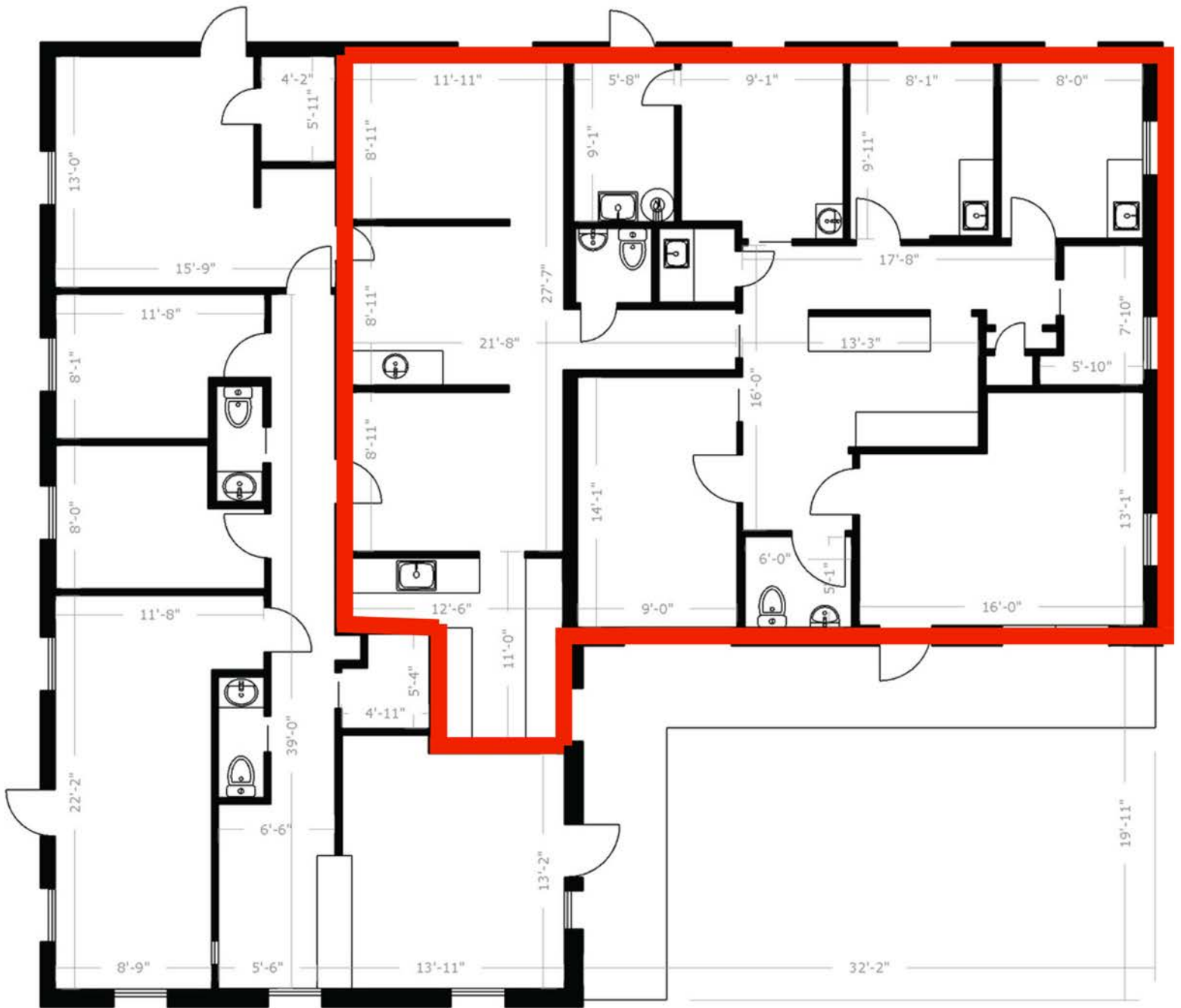
Plumbing throughout





# FLOOR PLAN

AVAILABLE LEASE SPACE IN RED



Vector Commercial Real Estate Services, LLC is a licensed Real Estate Brokerage. No warranties or representations, express or implied, are made as to the accuracy of the information contained herein, and same is submitted subject to omissions, changes of price, rental or other conditions, withdrawal without notice, and to any other limitations imposed by our principals.