

**2415** W 6<sup>TH</sup> ST.  
LOS ANGELES, CA

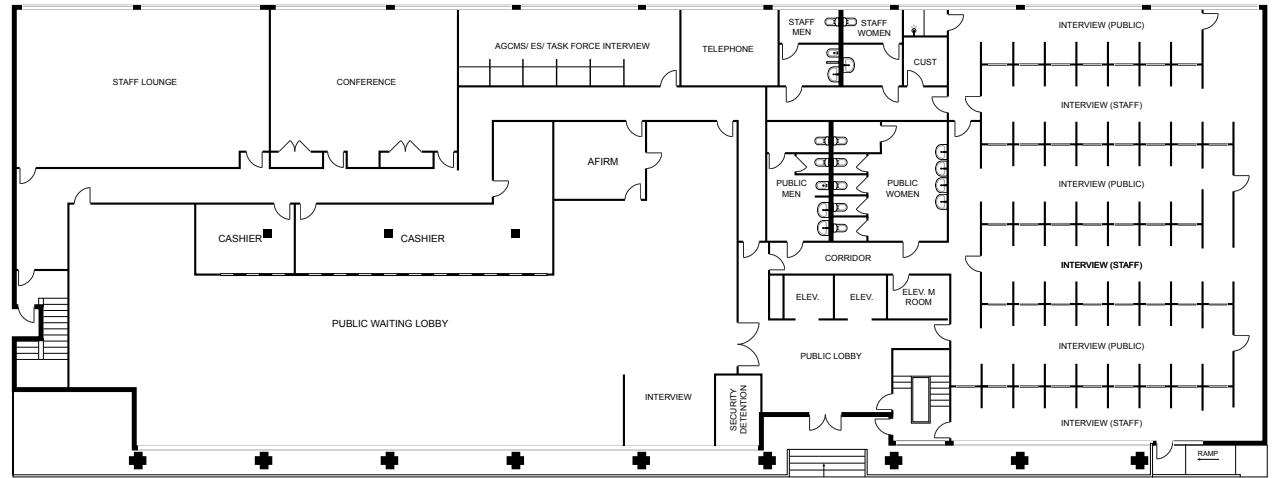


**46,000 SF FREESTANDING BUILDING WITH PRIVATE GATED PARKING IN THE HEART OF KOREATOWN**

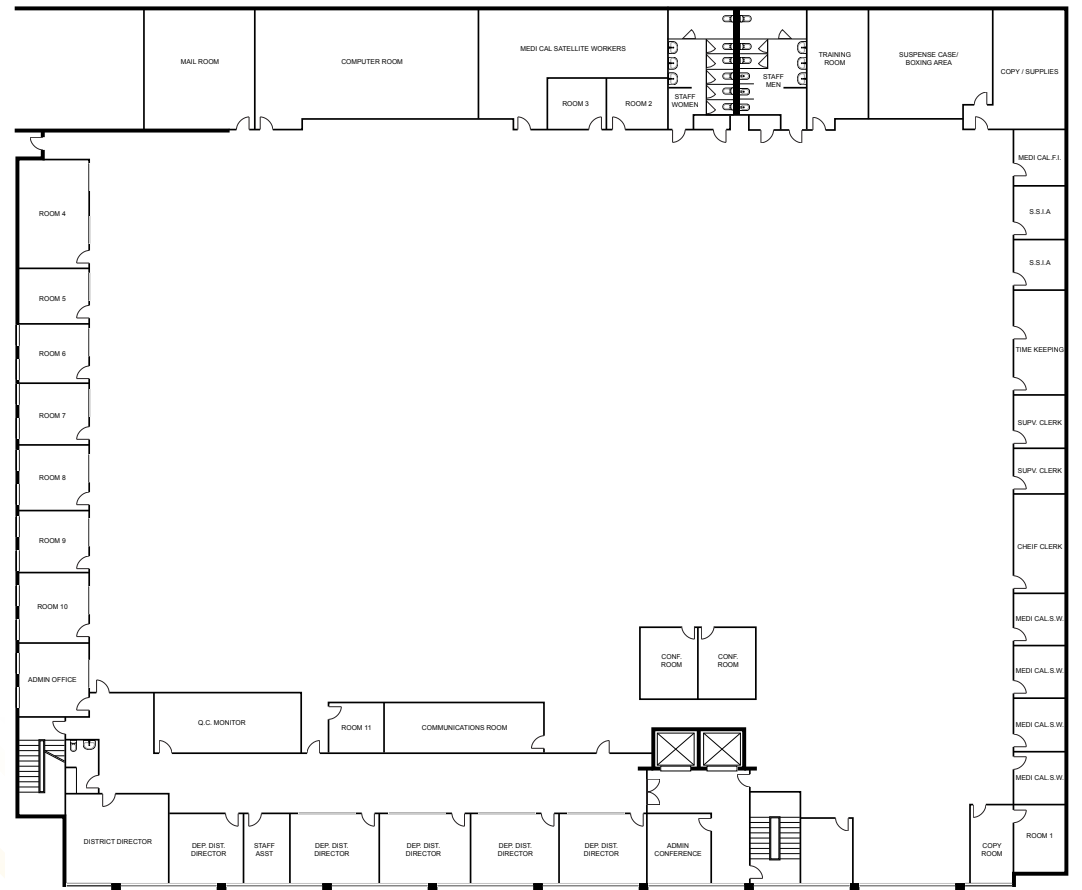


**CBRE**

## First Floor



## Second Floor



## TWO FLOORS OF EFFICIENT, MULTI-USE OFFICE SPACE

**FIRST FLOOR:** ±13,000 SF  
**SECOND FLOOR:** ±33,000 SF

## Building Details

**Address:** 2415 W 6th St, Los Angeles, CA 90057

**Property Size:** 46,228 SF

**Parking:** Gated private parking for over 100 vehicles  
at \$80/space/month

**Ceiling Height:** 9ft (existing tiles), 12ft (to concrete)





## Space Features



Mix of open layout and private offices/cubicles



Waiting Areas



Consultation cubicles/call center



Expansive administrative floor with large executive offices



An abundance of natural light



Efficient floorplates suitable for multiple uses



**2415** W 6<sup>TH</sup> ST.  
LOS ANGELES, CA



For more details, please contact

**Phil Hauspurg**

Lic. 02012230  
+1 310 550 2510  
[phil.hauspurg@cbre.com](mailto:phil.hauspurg@cbre.com)

**Chris Caras**

Lic. 01229700  
+1 213 613 3303  
[chris.caras@cbre.com](mailto:chris.caras@cbre.com)

**Phillip Sample**

Lic. 01145593  
+1 213 613 3301  
[phillip.sample@cbre.com](mailto:phillip.sample@cbre.com)

© 2023 CBRE, Inc. All rights reserved. This information has been obtained from sources believed reliable but has not been verified for accuracy or completeness. CBRE, Inc. makes no guarantee, representation or warranty and accepts no responsibility or liability as to the accuracy, completeness, or reliability of the information contained herein. You should conduct a careful, independent investigation of the property and verify all information. Any reliance on this information is solely at your own risk. CBRE and the CBRE logo are service marks of CBRE, Inc. All othermarks displayed onthis document are the property of their respective owners, and the use of such marks does not imply any affiliation with or endorsement of CBRE. Photos herein are the property of their respective owners. Use of these images without the express written consent of the owner is prohibited.

**CBRE**