



FOR LEASE



Gleneagle Park II
15455 Gleneagle Drive
Colorado Springs, CO 80920

This distinguished 2-Story, Class B building is located at the corner of Gleneagle Drive and Baptist Road. It services Gleneagle, Monument and Northern Colorado Springs



Building:
14,542 SF

Year Built:
2000

Parking:
4:1000 Plus

Lease Rate:
\$16.00 - \$18.00
SF NNN

Operating Expenses:
\$14.25 PSF

Term:
5-10 Years

Signage:
Building, Monument,
Directory, Suite

Features

- 1,603 RSF - Second Floor
- 909 RSF - First Floor ****Available March 2025!
- Ideal for insurance, law, accounting, medical/dental, real estate, and many others
- Brand new build for Tenant 2024
- Great location and access
- Could have Turn-Key Build-Out

TED T. LINK

625 North Cascade Avenue #120
Colorado Springs, CO 80903

O: 719-442-6500

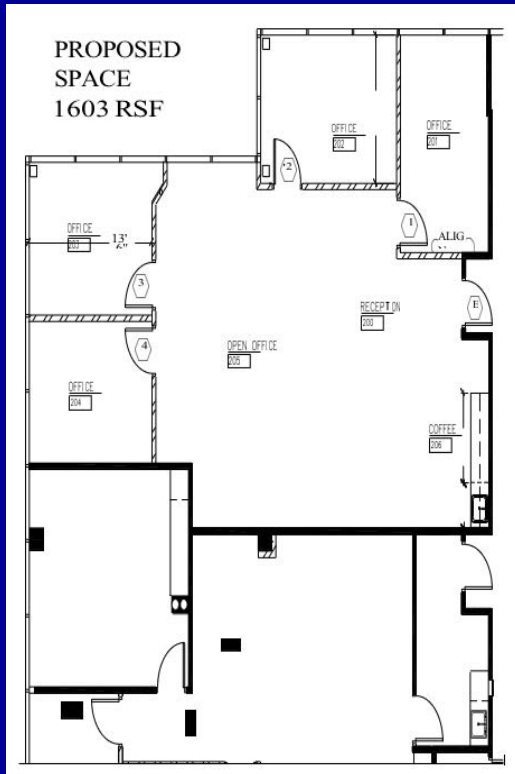
C: 719-337-0066

Ted@CascadeCommercial.net

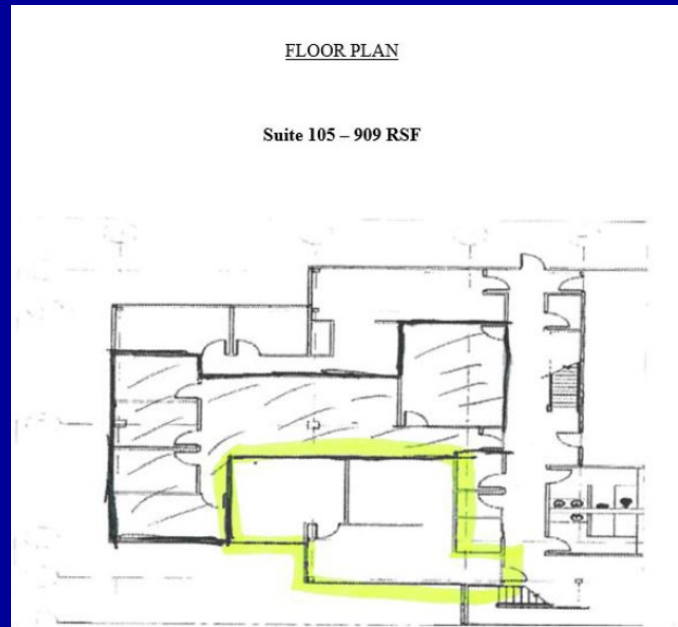
www.CascadeCommercial.net



Floor Plans



1,603 RSF on Second Floor



909 RSF on First Floor

*****Coming Available
March 1, 2025**

TED T. LINK

625 North Cascade Avenue #120

Colorado Springs, CO 80903

O: 719-442-6500

C: 719-337-0066

Ted@CascadeCommercial.net

www.cascadecommercial.net

