

CENTERVILLE FLEX SPACE

FOR LEASE



86 SOUTH 1250 WEST CENTERVILLE, UTAH

This is a fantastic property for a single user. The west side features a fenced storage yard. An addition to the property was completed in 2014, and a brand new roof was installed in June 2023. The property boasts beautiful landscaping and elegant finishes, including pine trim throughout the office.

LEASE RATE

\$30.19 SF/YR

Lease rate is a blended rate for building & yard

PARCEL SIZE

0.769 ACRES

SQUARE FOOTAGE

4,446

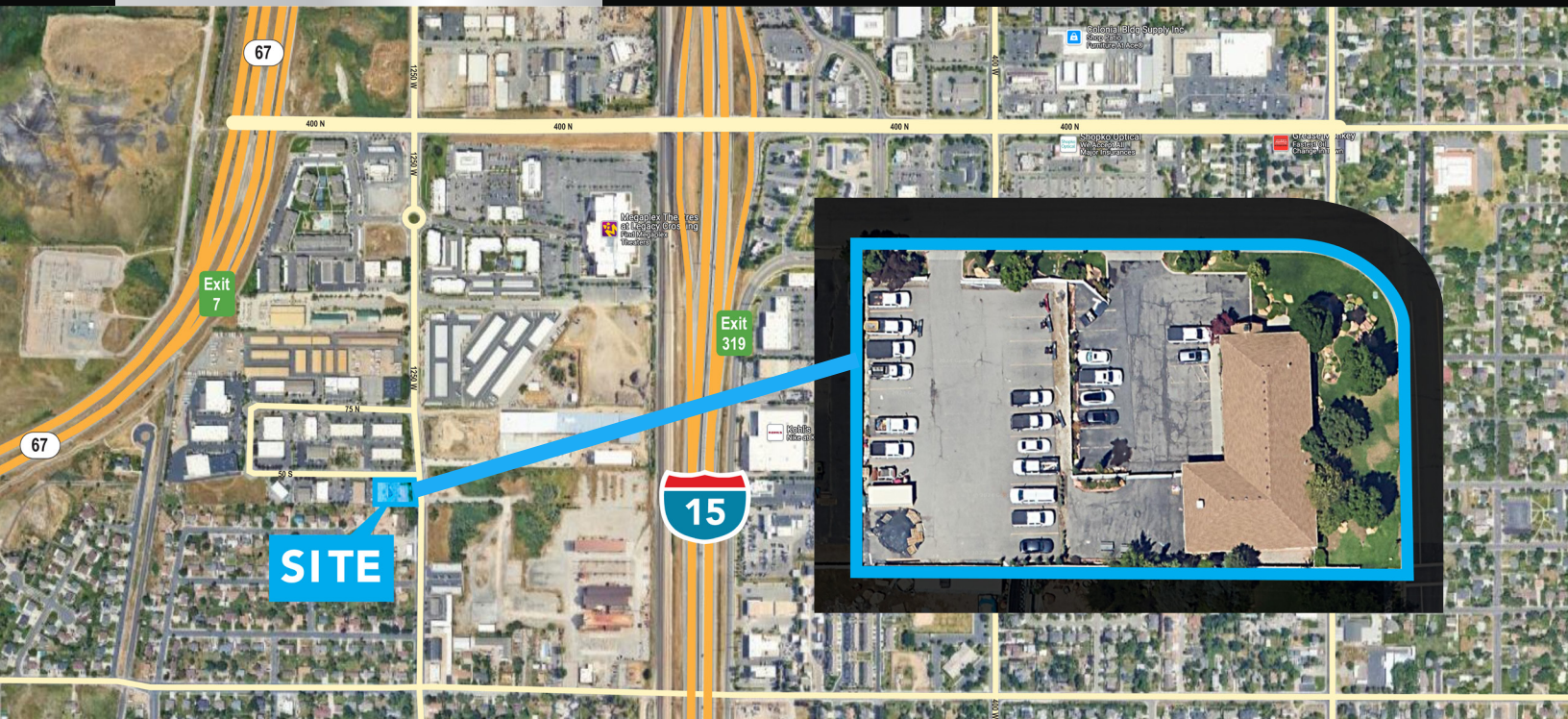
PROPERTY TYPE

Industrial

ZONING

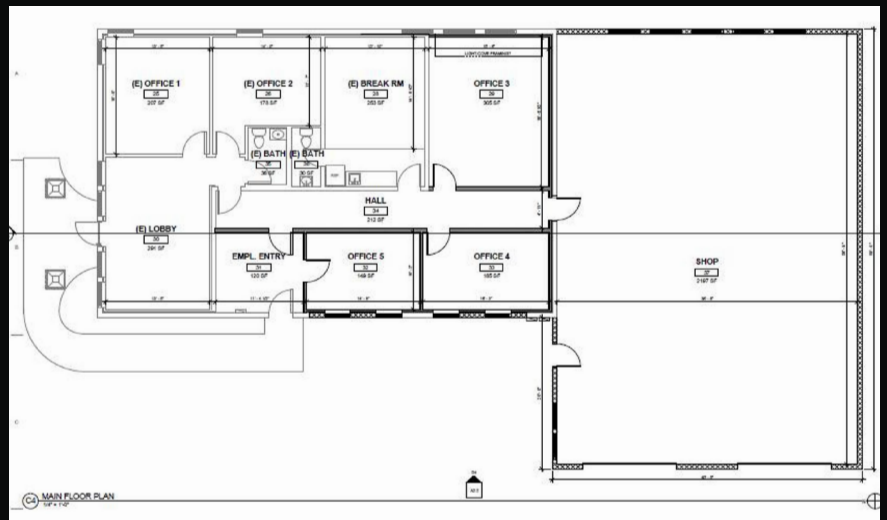
C-2





PROPERTY HIGHLIGHTS

- Quality interior finishes.
- Two ground level high bay doors with ~2,000 sqft of warehouse area.
- Open yard storage (over 1/3 acre / 16,456 sqft) to the west that is fully fenced.
- Brand new roof as of June 2023.
- Located in growing commercial area in Centerville just off Parish Lane.
- Convenient I-15 and Legacy Highway access.



**SCANDIA
COMPANY**

SCOTT BENNION

scott.bennion@scandiacompany.net
801 718 3771