



**PINNACLE  
REALTY**  
OF NEW YORK, LLC

EXCLUSIVE LISTING

**FOR LEASE**



**548 GRAND AVENUE**

**BROOKLYN, NY 11238**

**Prime  
Prospect Heights  
20,000 Sq. Ft. Yard  
Available For Lease**

Possession January 1st, 2025

Type  
**Land**



SQUARE FOOT  
**20,000<sub>RSF</sub>**



ZONING  
**M1-1**



ELECTRIC POWER  
**200<sub>AMPS</sub>**



PARCEL ID  
**1132**  
BLOCK



**34, 37**  
LOTS

PRICE

**Upon Request**

718-784-8282 / PINNACLERENY.COM

All information is from sources deemed reliable and is submitted subject to errors, omission, changes of price or other conditions, prior sale, rent and withdrawal without notice.

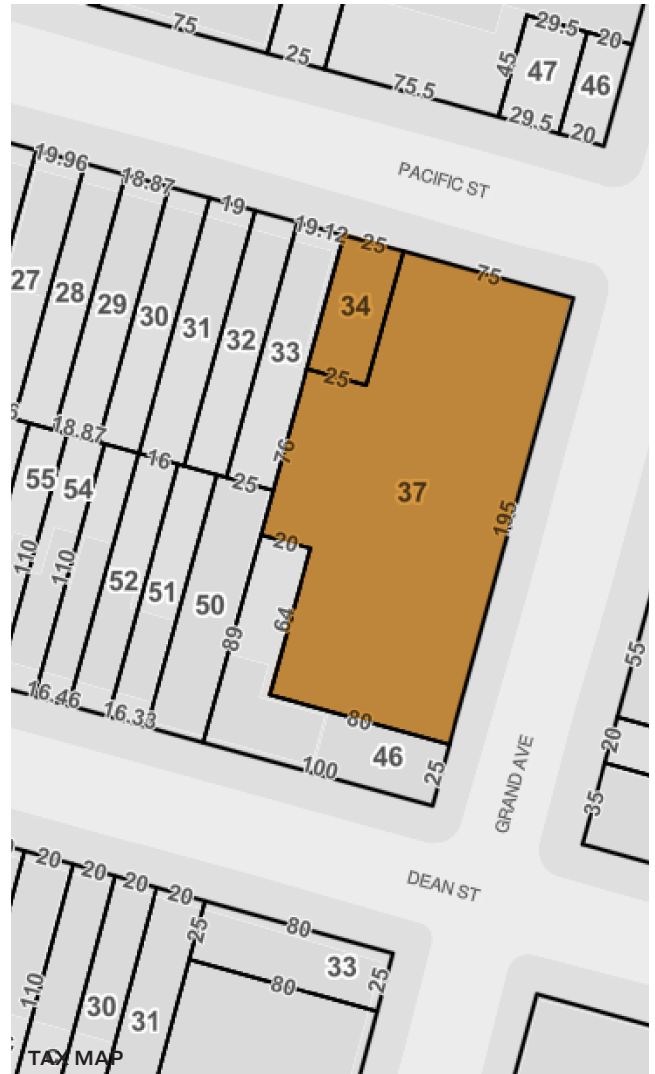
# Property Overview

## Features

- 20,000 Sq. Ft. Lot
- Lot Dimensions: 200'x100'
- Paved
- Fenced
- Light
- Drains
- 220 Amps Electric
- Vehicle Washing Station
- 2 Story Office Total 500 Sq. Ft.
- 2 Street Access
- 7,500 Gallon Diesel Tank
- Security System

## Ideal For

- Parking
- EV Charging
- Equipment Storage



548 GRAND AVENUE

BROOKLYN, NY 11238

## TRANSPORTATION

**A C** FRANKLIN AVENUE

**ATLANTIC AVE  
FLATBUSH AVE  
BROOKLYN-QUEENS EXPY**

**MTA Bus** **B65: GREEN ST/  
GRAND AVENUE  
B45:  
WASHINGTON AVE  
/ ATLANTIC AVE**



718-784-8282 / PINNACLERENY.COM

All information is from sources deemed reliable and is submitted subject to errors, omission, changes of price or other conditions, prior sale, rent and withdrawal without notice.

## PICTURES



LOT



DIESEL TANK



**PINNACLE  
REALTY**  
OF NEW YORK, LLC

34-07 Steinway Street, Suite 202  
Long Island City, NY 11101  
718-784-8282  
[pinnaclereny.com](http://pinnaclereny.com)

FOR MORE INFORMATION ABOUT THIS  
PROPERTY CONTACT EXCLUSIVE AGENTS:



**DAVID JUNIK**

Partner  
[djunik@pinnaclereny.com](mailto:djunik@pinnaclereny.com)  
718-371-6406



**NECHAMA LIBEROW**

Associate Broker  
[nliberow@pinnaclereny.com](mailto:nliberow@pinnaclereny.com)  
718-371-6420