

1,026 SF & 1,946 SF  
**OFFICE SPACE FOR LEASE \***  
Flower Mound, TX



**LOCATION:** 2601 Sagebrush Drive, Flower Mound, TX; located on SEQ of FM 2499 (Long Prairie Rd.) and Sagebrush Drive; Easy lighted access from FM 2499 – the primary N/S arterial through Flower Mound to the DFW Airport and the Mid-Cities! Suites back-up to a tree-lined creek!

**AVAILABLE:** Suite 101: 1,026 RSF – Reception; 3 offices; Break Room & Work Room.  
1 Corner Office.  
Suite 103: 1,946 RSF – Reception; Conference; 5 offices & Break Room.

**RENT:** \$17 .00/SF/Yr. plus NNNs.

**SIGNAGE:** Signage on Sagebrush Dr. and on the building facade.

\* Shared restrooms with Suite 104

For further information contact: Rich Muller



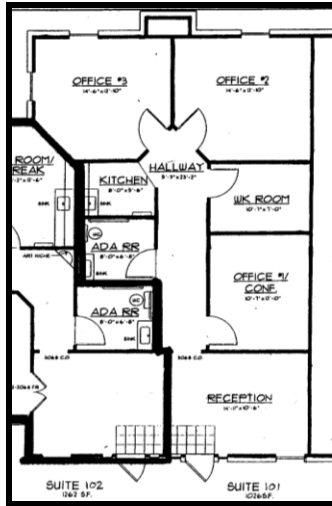
Vintage Realty

2980 Long Prairie Rd., Suite D

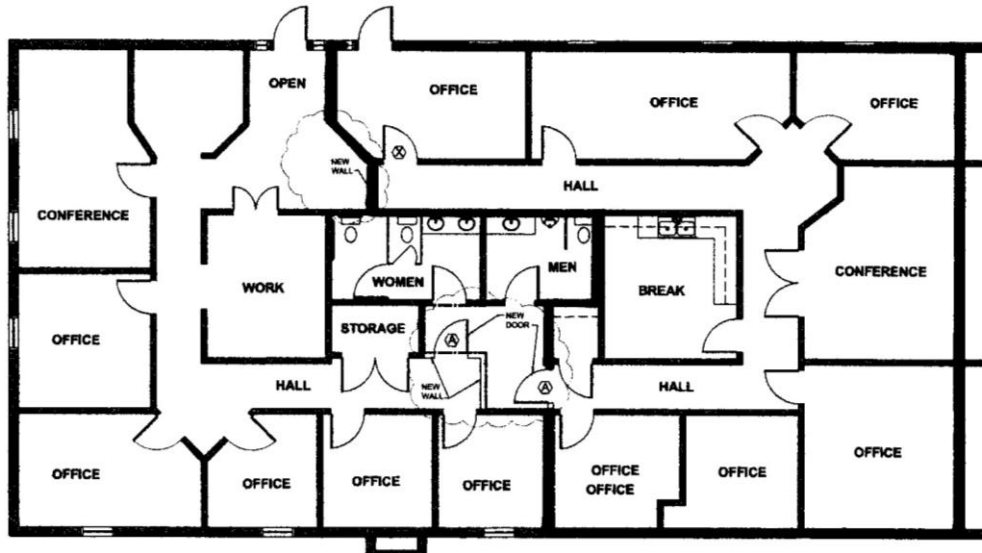
Flower Mound, TX 75022

972/355-0669 or Fax 972/355-5477

Email: [Rich@VintageRealty.net](mailto:Rich@VintageRealty.net) ; Web Site: [www.VintageRealty.net](http://www.VintageRealty.net)

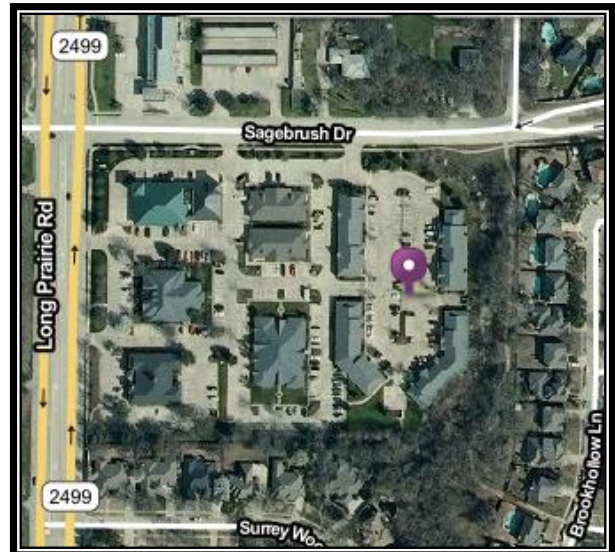
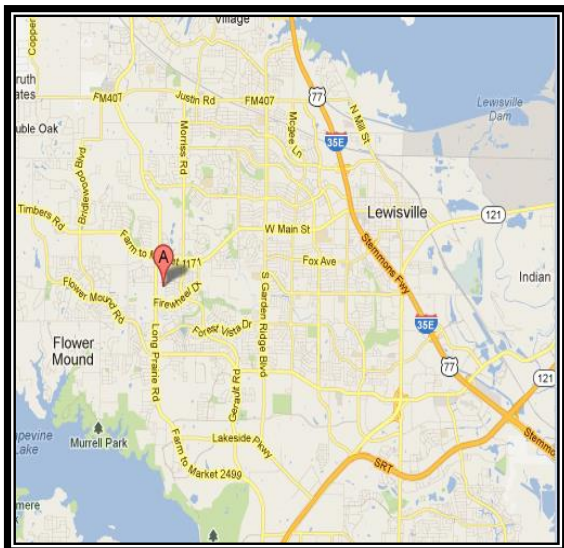


**Suite 101**



**Suite 104**

**Suite 103**



This information is believed to be accurate, but no representation or warranty, express or implied, as to its accuracy or completeness is made by any party. The presentation of this property is submitted subject to errors, omissions, change of price or prior sale or lease, or withdrawal without notice.