

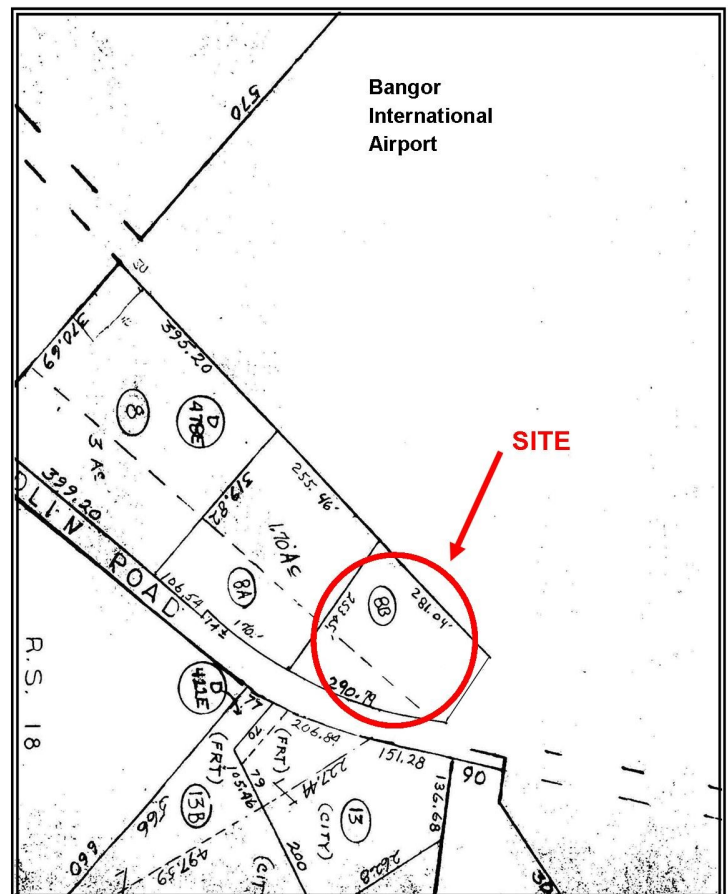


SITE AVAILABLE

252 Odlin Road Bangor, Maine

PROPERTY DESCRIPTION

- LOCATION:** Just off I-95 & I-395, prime location near hotels, restaurants, airport and office parks.
- LOT SIZE:** 1.24 +/- acres
- FRONTAGE:** 290' +/- on Odlin Road
- TRAFFIC COUNT:** 15,959 Odlin Rd @ Howard Johnson's (2017)
- UTILITIES:** Public
- ASSESSOR'S REFERENCE:** Map R17, Lot 8
- ZONING:** General Commercial & Service
- NEIGHBORHOOD:** Area businesses include Holiday Inn, Ramada Inn, Ground Round, VIP Auto Center, Dunkin Donuts, Fairfield Inn, Howard Johnson, gas stations, banks, office and industrial parks, etc.



For further information, please contact:

Carol A. Epstein

P.O. Box 2444 Bangor, ME 04402
(207) 945-6222
results@epsteincommercial.com
www.epsteincommercial.com

Information furnished is from sources deemed reliable, but no warranty is made to the accuracy thereof. The listing broker hereby discloses that he is acting solely as an agent for the seller in the marketing, negotiation, and sale/lease of this property. Broker further discloses that he represents the seller's interest and has a fiduciary duty to disclose to the seller information which is material to the sale acquired from the buyer or any other source.



SITE AVAILABLE

252 Odlin Road Bangor, Maine

