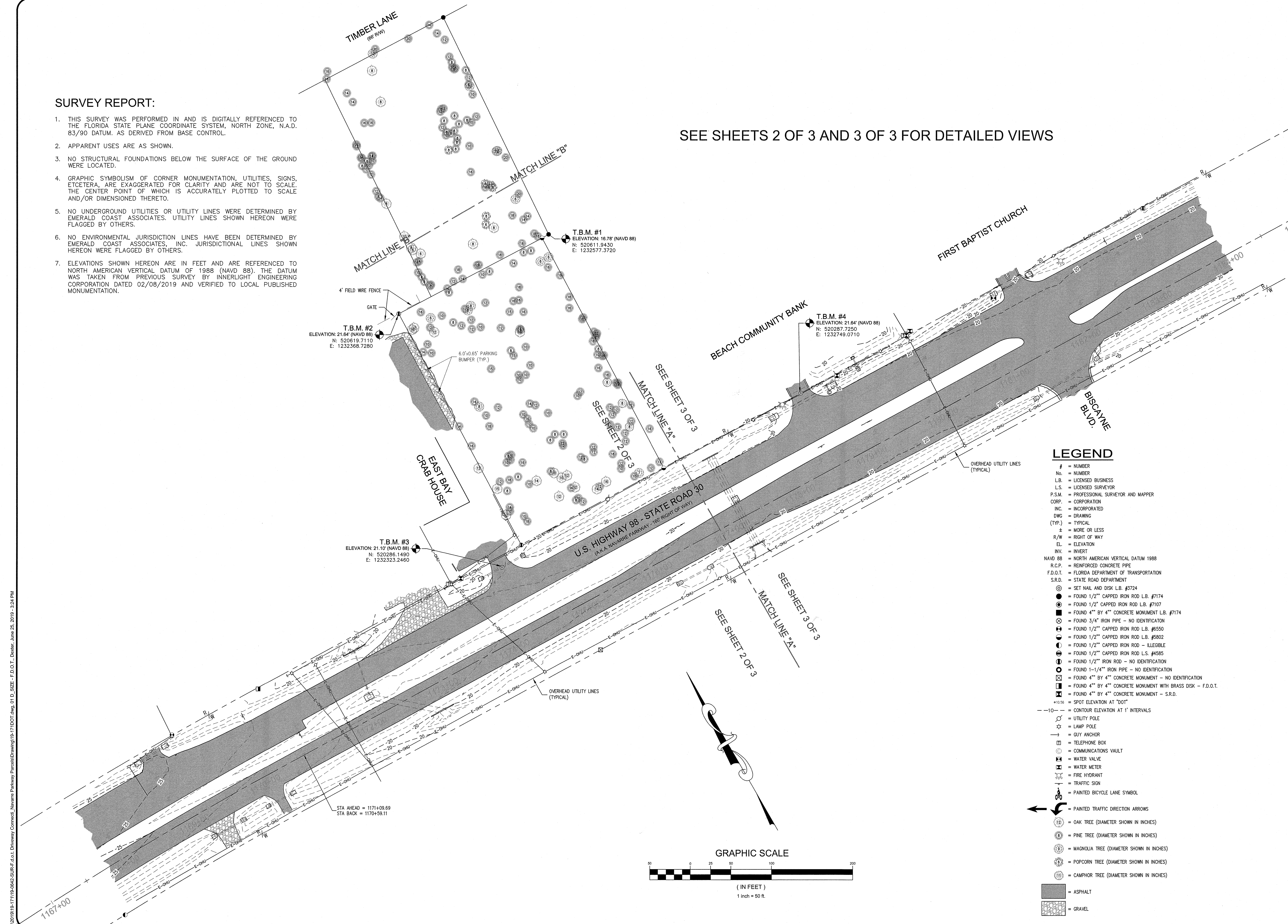



1. THIS SURVEY WAS PERFORMED IN AND IS DIGITALLY REFERENCED TO THE FLORIDA STATE PLANE COORDINATE SYSTEM, NORTH ZONE, N.A.D. 83/90 DATUM. AS DERIVED FROM BASE CONTROL.
2. APPARENT USES ARE AS SHOWN.
3. NO STRUCTURAL FOUNDATIONS BELOW THE SURFACE OF THE GROUND WERE LOCATED.
4. GRAPHIC SYMBOLISM OF CORNER MONUMENTATION, UTILITIES, SIGNS, ETCETERA, ARE EXAGGERATED FOR CLARITY AND ARE NOT TO SCALE. THE CENTER POINT OF WHICH IS ACCURATELY PLOTTED TO SCALE AND/OR DIMENSIONED THERETO.
5. NO UNDERGROUND UTILITIES OR UTILITY LINES WERE DETERMINED BY EMERALD COAST ASSOCIATES. UTILITY LINES SHOWN HEREON WERE FLAGGED BY OTHERS.
6. NO ENVIRONMENTAL JURISDICTION LINES HAVE BEEN DETERMINED BY EMERALD COAST ASSOCIATES, INC. JURISDICTIONAL LINES SHOWN HEREON WERE FLAGGED BY OTHERS.
7. ELEVATIONS SHOWN HEREON ARE IN FEET AND ARE REFERENCED TO NORTH AMERICAN VERTICAL DATUM OF 1988 (NAVD 88). THE DATUM WAS TAKEN FROM PREVIOUS SURVEY BY INNERLIGHT ENGINEERING CORPORATION DATED 02/08/2019 AND VERIFIED TO LOCAL PUBLISHED MONUMENTATION.

SEE SHEETS 2 OF 3 AND 3 OF 3 FOR DETAILED VIEWS



 **www.eca-fl.com**

Emerald Coast Associates Inc.

Land Planning • Engineering • Surveying
Since 1979

327 COUNTY HIGHWAY 393 SOUTH
SANTA ROSA BEACH, FLORIDA 32459
PH: (850) 267-0473, FAX: (850) 267-0979

SEE US AT THE EXPRESS WRITTEN PERMISSION AND CONSENT OF ECA, INC.

**F.D.O.T. DRIVEWAY
CONNECTION AND TREE
LOCATION SURVEY**

LOCATED IN SECTION 15, TOWNSHIP 2 SOUTH,
RANGE 26 WEST, SANTA ROSA COUNTY, FLORIDA.

PREPARED BY: FRANK WIGLOW
A/E: COUNELL BANKER RESIDENTIAL REAL ESTATE

ADDED, MODIFIED, OR CHANGED IN ANY FORM OR MANNER.

[illegible]

THE SURVEY SHOWN HEREON, PREPARED IN ACCORDANCE WITH SECTION 47.027 FLO. STATUTES AND CHAPTER 351.061 AND 351.062, FLO. ADMINISTRATIVE CODE, STANDARDS OF PRACTICE, MAY BE USED FOR ANY PURPOSE, BUT IT IS NOT TO BE USED AS A VALID WITHOUT THE SIGNATURE AND THE ORIGINAL RAISED SEAL OF A FLO. LICENSED SURVEYOR AND MAPPER.


Darryl E. W. Burgess 6/25/19
DATE

DARRYL E. W. BURGESS
FLO. LICENSED SURVEYOR AND MAPPER #4980
EMERALD COAST ASSOCIATES, INC. - I.B. #3724

PROJECT: 19-171DOT	
DRAWN BY: DLL	SCALE: 1" = 50'
DWG. DATE: 06/10/19	ORDER: 19-0642
FIELD DATE: 06/25/19	PROJECT: 19-171
FIELD BOOK(S): BOOK 2237, PAGES 16-42 (RB)	
<i>SHEET</i> 1 of 3	

= NUMBER
No. = NUMBER
L.B. = LICENSED BUSINESS
L.S. = LICENSED SURVEYOR
P.S.M. = PROFESSIONAL SURVEYOR AND MAPPER
CORP. = CORPORATION
INC. = INCORPORATED
DWG = DRAWING
(TYP.) = TYPICAL
± = MORE OR LESS
R/W = RIGHT OF WAY
EL. = ELEVATION
INV. = INVERT
HAYD 88 = NORTH AMERICAN VERTICAL DATUM 1988
R.C.P. = REINFORCED CONCRETE PIPE
F.D.O.T. = FLORIDA DEPARTMENT OF TRANSPORTATION
S.R.D. = STATE ROAD DEPARTMENT
⊙ = SET NAIL AND DISK L.B. #3724
● = FOUND 1/2" CAPPED IRON ROD L.B. #7174
⦿ = FOUND 1/2" CAPPED IRON ROD L.B. #7107
⊗ = FOUND 4" BY 4" CONCRETE MONUMENT L.B. #7174
⊗ = FOUND 3/4" IRON PIPE - NO IDENTIFICATION
⦿ = FOUND 1/2" CAPPED IRON ROD L.B. #6550
⦿ = FOUND 1/2" CAPPED IRON ROD L.B. #5602
⦿ = FOUND 1/2" CAPPED IRON ROD - ILLEGIBLE
⦿ = FOUND 1/2" CAPPED IRON ROD L.S. #4585
① = FOUND 1/2" IRON ROD - NO IDENTIFICATION
① = FOUND 1-1/4" IRON PIPE - NO IDENTIFICATION
⊗ = FOUND 4" BY 4" CONCRETE MONUMENT - NO IDENTIFICATION
⊗ = FOUND 4" BY 4" CONCRETE MONUMENT WITH BRASS DISK - F.D.O.T.
⊗ = FOUND 4" BY 4" CONCRETE MONUMENT - S.R.D.
@ 10.56 = SPOT ELEVATION AT "DOT"
-10- = CONTOUR ELEVATION AT 1' INTERVALS
⊙ = UTILITY POLE
★ = LAMP POLE
— = GUY ANCHOR
☎ = TELEPHONE BOX
☎ = COMMUNICATIONS VAULT
⊗ = WATER VALVE
⊗ = WATER METER
⦿ = FIRE HYDRANT
⦿ = TRAFFIC SIGN
🚲 = PAINTED BICYCLE LANE SYMBOL



 www.eca-fl.com

Emerald Coast Associates Inc.

Land Planning • Engineering • Surveying
Since 1979

327 COUNTY HIGHWAY 393, SOUTH
SANTA ROSA BEACH, FLORIDA 32459
PH: (850) 267-0473, FAX: (850) 267-0979

UT THE EXPRESS WRITTEN PERMISSION AND CONSENT OF ECA, INC.

**F.D.O.T. DRIVEWAY
CONNECTION AND TREE
LOCATION SURVEY**

LOCATED IN SECTION 15, TOWNSHIP 2 SOUTH,
RANGE 20 WEST, SANTA ROSA COUNTY, FLORIDA.

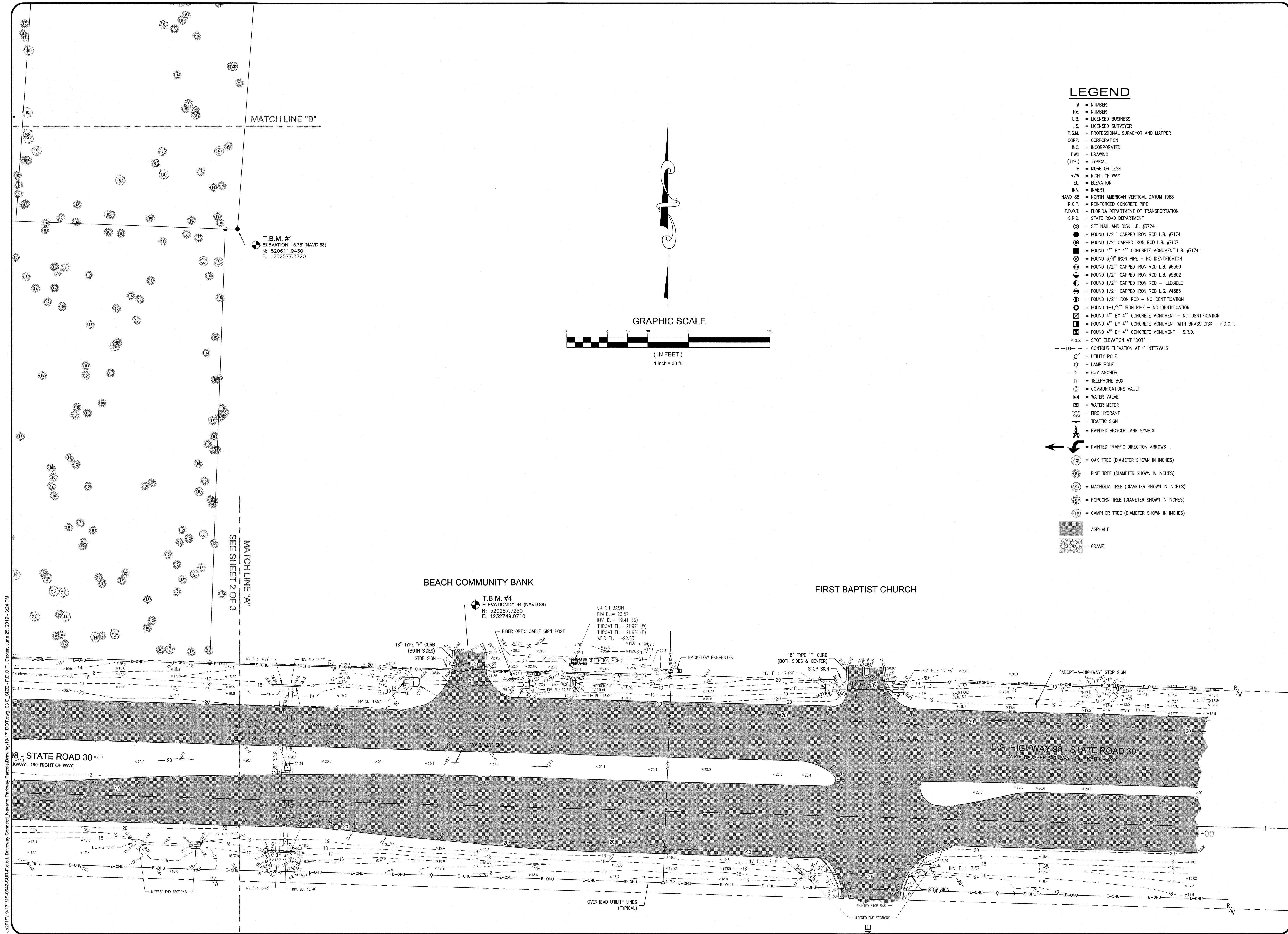
PREPARED FOR: DYIANA WOLOVIA
BY: COLDWELL BANKER RESIDENTIAL REAL ESTATE

[illegible]

SEE SHEET 1 OF 3 FOR
CERTIFICATION AND
SURVEY REPORT

EMERALD COAST ASSOCIATES, INC. - I.B. #3724
CONTAINED HEREIN INCLUDING DIGITAL INFORMATION ARE THE

PROJECT: 19-171DOT	
DRAWN BY: DLL	SCALE: 1" = 30'
DWG. DATE: 06/10/19	ORDER: 19-0642
FIELD DATE: 06/25/19	PROJECT: 19-171
FIELD BOOK(S): BOOK 2237, PAGES 16-42 (RB)	



LEGEND

- # = NUMBER
- No. = NUMBER
- L.B. = LICENSED BUSINESS
- L.S. = LICENSED SURVEYOR
- P.S.M. = PROFESSIONAL SURVEYOR AND MAPPER
- CORP. = CORPORATION
- INC. = INCORPORATED
- DWG. = DRAWING
- (TYP.) = TYPICAL
- ± = MORE OR LESS
- R/W = RIGHT OF WAY
- EL. = ELEVATION
- INV. = INVERT
- NAVD 88 = NORTH AMERICAN VERTICAL DATUM 1988
- R.C.P. = REINFORCED CONCRETE PIPE
- F.D.O.T. = FLORIDA DEPARTMENT OF TRANSPORTATION
- S.R.D. = STATE ROAD DEPARTMENT
- ⊙ = SET NAIL AND DISK L.B. #3724
- = FOUND 1/2" CAPPED IRON ROD L.B. #7174
- ⦿ = FOUND 1/2" CAPPED IRON ROD L.B. #7107
- = FOUND 4" BY 4" CONCRETE MONUMENT L.B. #7174
- ⊗ = FOUND 3/4" IRON PIPE - NO IDENTIFICATION
- ⊙ = FOUND 1/2" CAPPED IRON ROD L.B. #6550
- ⦿ = FOUND 1/2" CAPPED IRON ROD L.B. #5802
- ⦿ = FOUND 1/2" CAPPED IRON ROD L.B. #4585
- ⦿ = FOUND 1/2" IRON ROD - NO IDENTIFICATION
- ⦿ = FOUND 1-1/4" IRON PIPE - NO IDENTIFICATION
- ⦿ = FOUND 4" BY 4" CONCRETE MONUMENT - NO IDENTIFICATION
- ⦿ = FOUND 4" BY 4" CONCRETE MONUMENT WITH BRASS DISK - F.D.O.T.
- ⦿ = FOUND 4" BY 4" CONCRETE MONUMENT - S.R.D.
- = SPOT ELEVATION AT "DOT"
- - - = CONTOUR ELEVATION AT 1' INTERVALS
- ☆ = UTILITY POLE
- ⦿ = LAMP POLE
- ⦿ = GUY ANCHOR
- ⦿ = TELEPHONE BOX
- ⦿ = COMMUNICATIONS VAULT
- ⦿ = WATER VALVE
- ⦿ = WATER METER
- ⦿ = FIRE HYDRANT
- ⦿ = TRAFFIC SIGN
- ⦿ = PAINTED BICYCLE LANE SYMBOL
- ⦿ = PAINTED TRAFFIC DIRECTION ARROWS
- ⦿ = OAK TREE (DIAMETER SHOWN IN INCHES)
- ⦿ = PINE TREE (DIAMETER SHOWN IN INCHES)
- ⦿ = MAGNOLIA TREE (DIAMETER SHOWN IN INCHES)
- ⦿ = POPCORN TREE (DIAMETER SHOWN IN INCHES)
- ⦿ = CAMPHOR TREE (DIAMETER SHOWN IN INCHES)
- = ASPHALT
- = GRAVEL

www.eca-fl.com

Emerald Coast Associates Inc.

Land Planning • Engineering • Surveying

Since 1979

327 COUNTY HIGHWAY 393 SOUTH
SANTA ROSA BEACH, FLORIDA 32459
PH: (850) 267-0473, FAX: (850) 267-0979

**F.D.O.T. DRIVEWAY
CONNECTION AND TREE
LOCATION SURVEY**

LOCATED IN SECTION 15, TOWNSHIP 2 SOUTH,
RANGE 26 WEST, SANTA ROSA COUNTY, FLORIDA.

DESIGNED BY: JAMES W. WILSON
AT: COLUMBIA RIVER CONSULTING, LLC

CHECK
BY:

REVISION

DATE

SEE SHEET 1 OF 3 FOR
CERTIFICATION AND
SURVEY REPORT

PROJECT:
19-171DOT

DRAWN BY: DLL SCALE: 1" = 30'

DWG. DATE: 06/10/19 ORDER: 19-0642

FIELD DATE: 06/25/19 PROJECT: 19-171

FIELD BOOK(S):
BOOK 2237, PAGES 16-42 (RB)

**SHEET
3 of 3**

THESE PLANS, AND IDEAS AND CONCEPTS CONTAINED HEREIN INCLUDING DIGITAL INFORMATION ARE THE PROPERTY OF ECA, INC. AND ARE NOT TO BE REPRODUCED, COPIED, MODIFIED, OR CHANGED IN ANY FORM OR MANNER WITHOUT THE EXPRESS WRITTEN PERMISSION AND CONSENT OF ECA, INC.