

±1 ACRE FOR SALE | GL or BTS

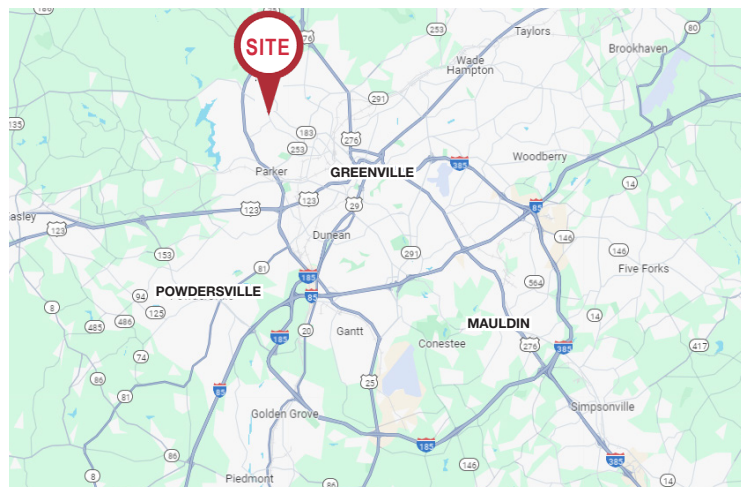


1917 CEDAR LANE ROAD | GREENVILLE, SC

PROPERTY HIGHLIGHTS

- Retail Pad available for GL or BTS
- Prime opportunity for an Automotive user, Medical, Bank and many more to join a national QSR in this development.
- Located in a growing retail corridor surrounded numerous new residential developments
- Strategically positioned just minutes from Downtown Greenville on the going-to-work side of the road and the first seen site entering the corridor from the going-home direction of travel.
- Great visibility off Cedar Lane Rd with the development having over 325 ft of total frontage
- Surrounding retailers include: Food Lion, Chase Bake, AutoZone, Wendy's, Subway, Truist, Hardee's, Bank of America, and many more
- ± 15,400 VPD on Cedar Lane Rd
- **Price:** Contact Broker For Details

LOCATOR MAP



DEMOGRAPHICS

	1 MILE	3 MILE	5 MILE
2023 POPULATION	7,232	48,633	111,371
AVG HH INCOME	\$53,514	\$57,278	\$76,690

NAI Earle Furman

Geoff Beans | Senior Associate
864 678 5989 | gbeans@naief.com

Jake Scott | Associate
864 293 2886 | jscott@naief.com

All information contained herein is from sources deemed reliable; however, no representation or warranty is made to the accuracy thereof.

±1 ACRE FOR SALE | GL or BTS

TMS #B010000100301
N/F SHIVANSH PROPERTIES, LLC
DB 2674 PG 5649

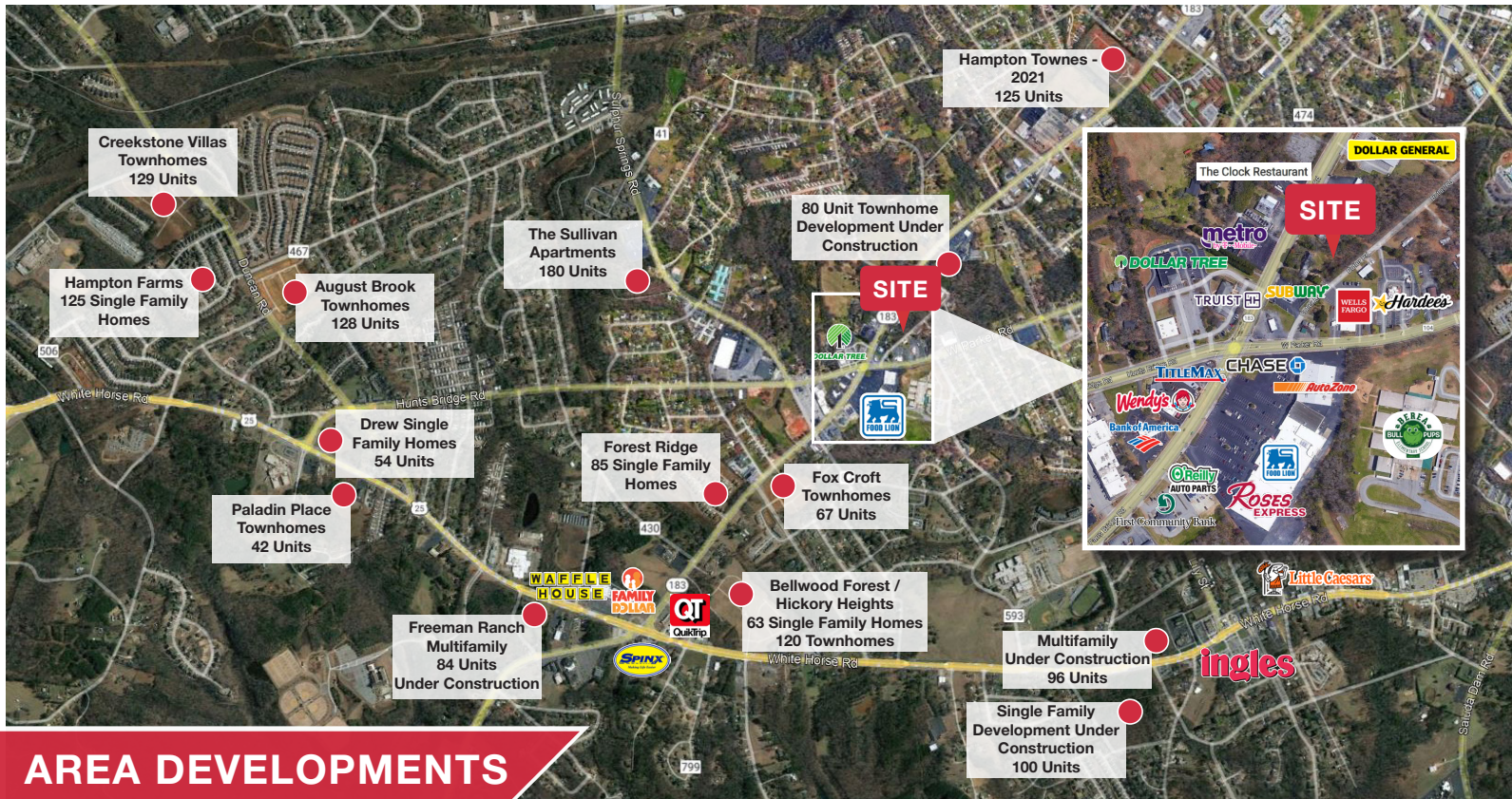
AVAILABLE

±6,912 SF

Cedar Lane Rd

183

SITE PLAN



NAI Earle Furman

Geoff Beans | Senior Associate
864 678 5989 | gbeans@naief.com

Jake Scott | Associate
864 293 2886 | jscott@naief.com

All information contained herein is from sources deemed reliable; however, no representation or warranty is made to the accuracy thereof.