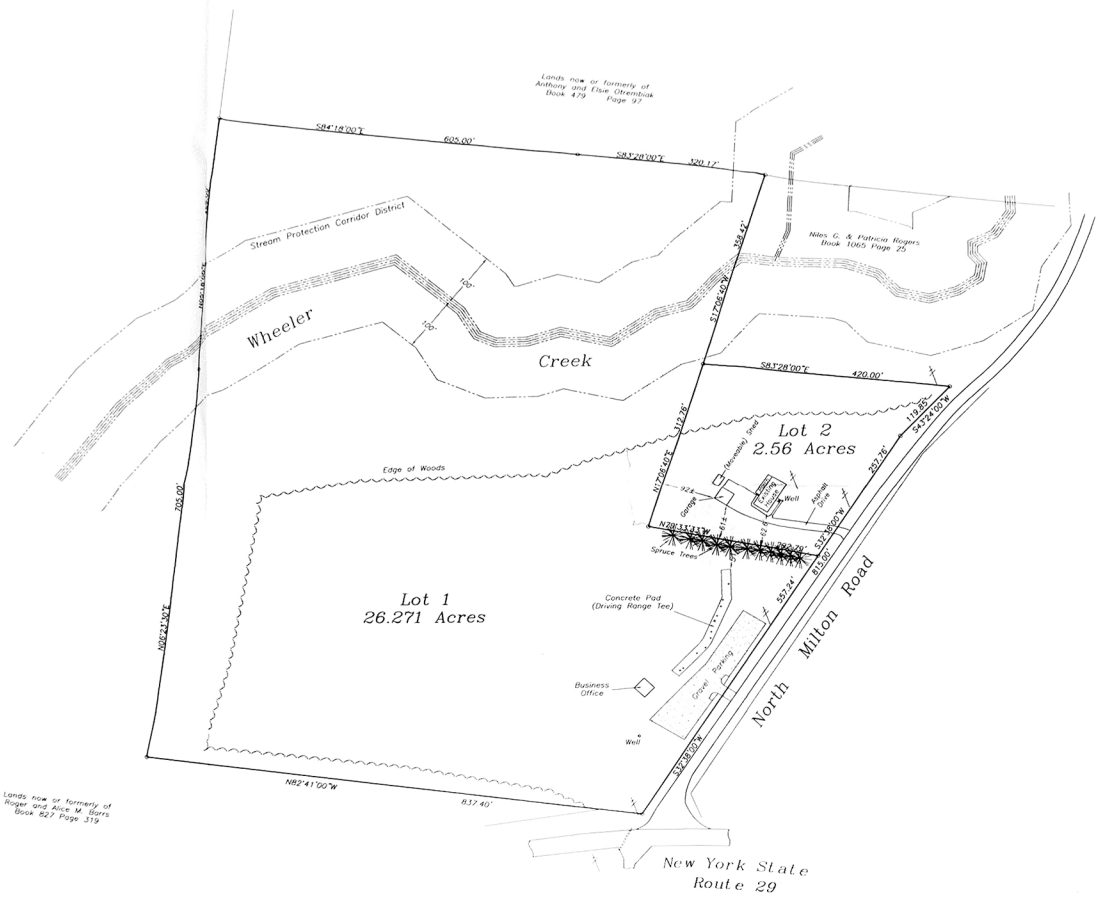


Unauthorized alteration or addition to this map is a violation of Article 160, Section 1706 and paragraph 4(b) of the New York State Education Law.



Map Reference:  
 See a map entitled "A Map of lands of Earl Baker & Ruth Edwitt Baker" dated 30 April 1984, as granted by Carpenter Associates, P.C. and filed in the Saratoga County Clerk's Office as Map B-115.

Tax Map Section 164.00 Block 1 Lot 381



Lands now or formerly of Roger and Anne M. Barrs Book 827 Page 319

Note:  
 The two new parcels created by this subdivision have been granted a one-time single-lot exemption. Any further subdivision must meet the complete lot area and dimensional requirements of the current Town of Milton Zoning Code.

Revised 18 November 2003 Note added regarding One-time Exemption.



A Minor Subdivision of Lands of  
 Terry Minsch  
 Town of Milton, Saratoga Co., N.Y.  
 Scale: 1"=100' 23 September 2003

Surveyed by  
 Carpenter Associates, P.C. - Galway, N.Y. - (518) 882-9774