

414 E. MARKET STREET, CHARLOTTESVILLE, VA 22902  
TEL: 804-963-4600 FAX: 804-963-4654 E-MAIL: jrh@jrarch.com

PROJECT

**BROADWAY COURT**  
BROADWAY STREET  
ALBEMARLE COUNTY, VIRGINIA

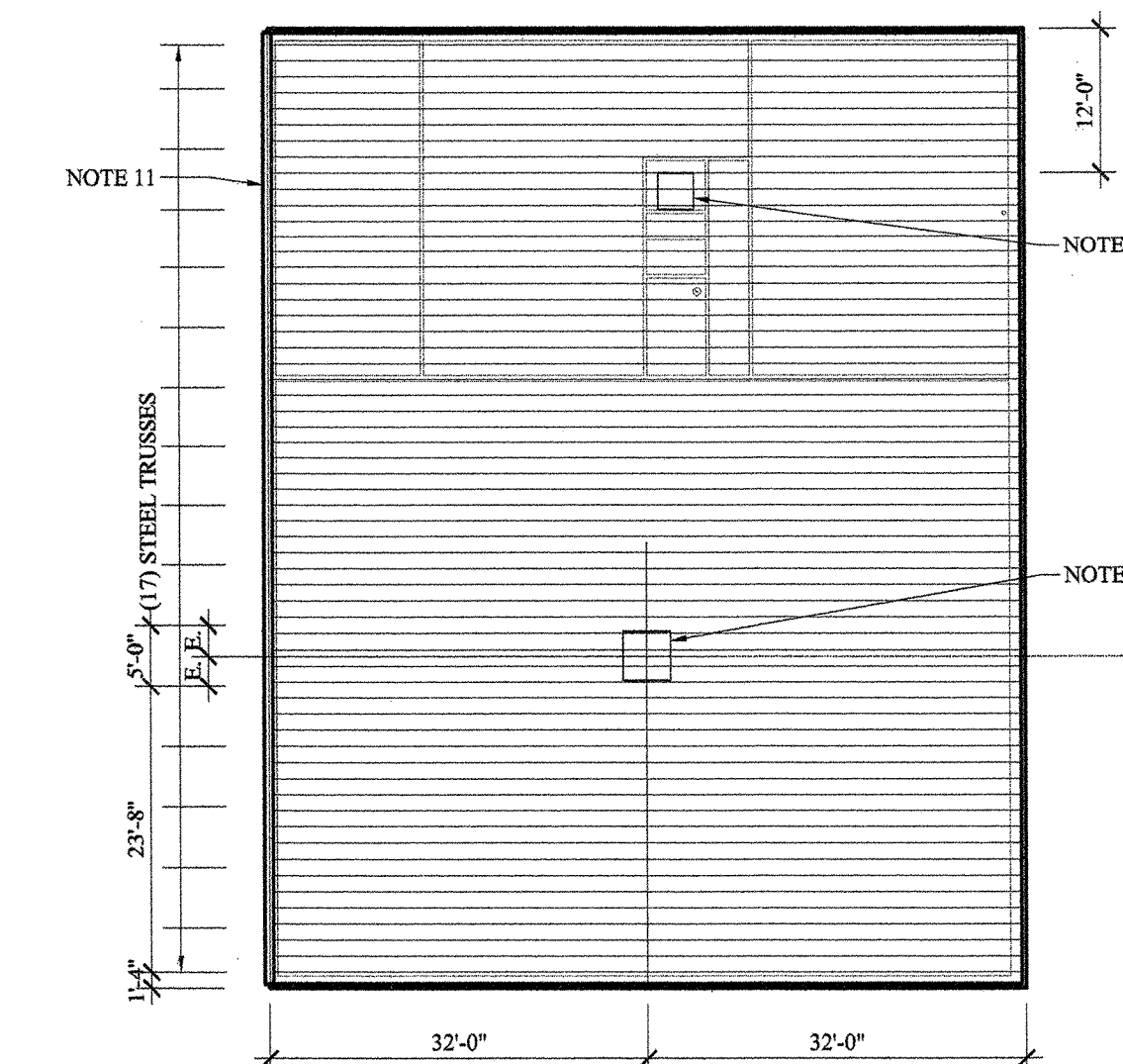
REVISIONS  
10-16-03 ADD INFO.  
1-26-04 ADD INFO.  
1-27-04 PLAN CHECK  
03-23-04 PERMIT SET  
04-23-04 CONSTRUCTION SET

TITLE  
**FLOOR PLANS**  
SCALE: AS NOTED

SHEET NUMBER/DATE

**A-01**

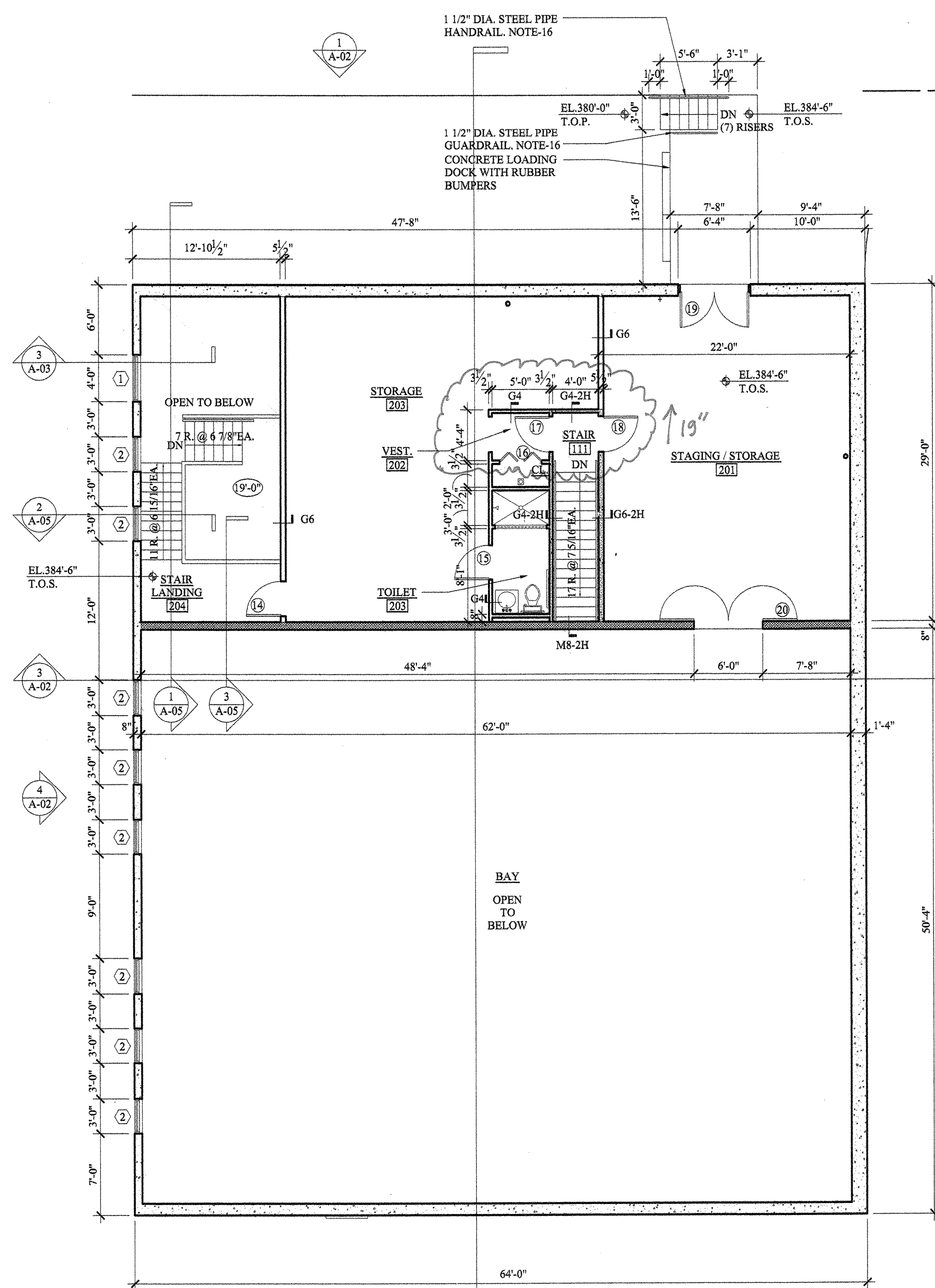
January 26, 2003  
DO NOT SCALE DRAWINGS.  
REPORT DISCREPANCIES TO ARCHITECT.



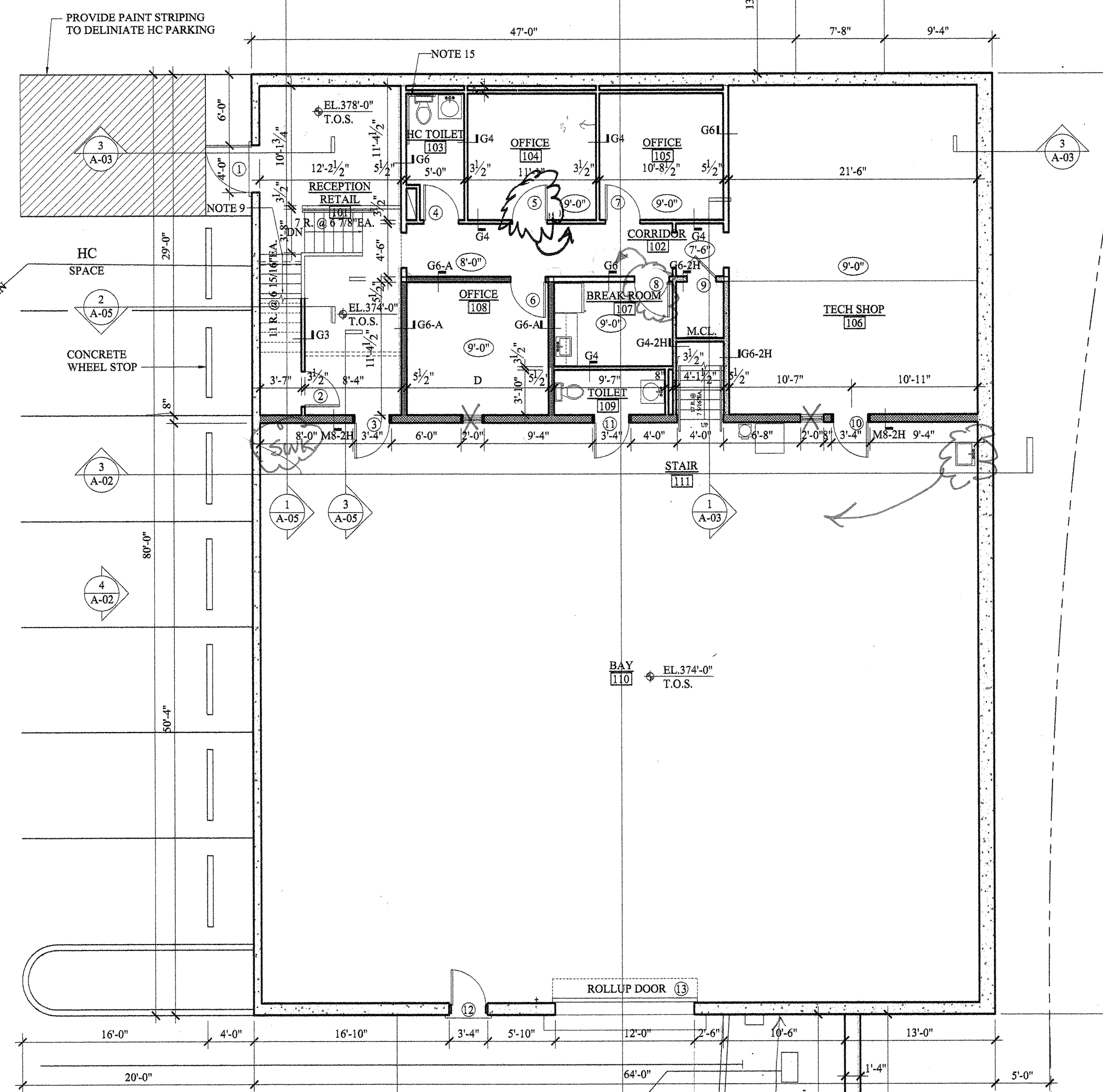
**3 ROOF PLAN**  
SCALE: 1/16" = 1'-0"

**GENERAL NOTES:**

- ALL INTERIOR PARTITIONS TO BE 20GA. 3 5/8" MTL. STUDS @ 16" O.C. WITH ONE LAYER OF 5/8" GWB ON EACH SIDE, UNLESS OTHERWISE NOTED.
- OFFICE SPACE CEILING TO BE 2X4 SUSPENDED ACOUSTICAL TILE CEILING WIRE HUNG, AND BRACED AS REQUIRED.
- ROOF TO BE PREFINISHED METAL: "ADVANTAGE-LOK" 29GA. "TERRACOTTA-RED" BY: UNION CORRUGATING CO. ON FIREPROOF PLYWD. SHEATHING ON 1 1/2" CORRUGATED STEEL DECK.
- FLOORING INSTALLER TO BE RESPONSIBLE FOR PREPARATION OF CONCRETE SLAB SURFACE PRIOR TO INSTALLATION.
- PAINTING CONTRACTOR TO PREP. MASONRY AND CONCRETE WALL SURFACE WITH FILLER (AS REQUIRED) PRIOR TO PAINTING.
- PAINTING CONTRACTOR TO CAULK SEAM BETWEEN MASONRY WALL AND CONC. SLAB PRIOR TO PAINTING.
- PAINTING CONTRACTOR TO INCLUDE AN EIGHT INCH BASE OF THE POLYURETHANE PAINT (PT-4) ALONG THE MASONRY AND CONCRETE WALLS OF THE BAY AREA. REFER TO PLANS FOR METAL STUD FURRING.
- PROVIDE 36" X 36" ACCESS DOOR UNDER RECEPTION AREA STAIR LANDING TO REACH SPACE UNDER RECEPTION AREA PLATFORM.
- HVAC ROOFTOP UNITS ARE TO BE SUPPORTED BY SECONDARY STEEL BEAMS SIZED AND LOCATED TO SUIT THE SPECIFIED UNITS. SEE STRUCTURAL DWGS.
- HVAC ROOFTOP UNITS ARE TO BE MOUNTED ON SUITABLE METAL CURBS AND FLASHING AS PER MANUFACTURER'S RECOMMENDATION.
- PREFINISHED METAL GUTTER WITH (3) PREFINISHED METAL DOWNSPOUTS. SEE EXTERIOR ELEVATIONS FOR LOCATIONS.
- ALL ROOF PENETRATIONS TO RECEIVE SUITABLE FLASHING AS RECOMMENDED BY ROOF MANUFACTURER.
- ALL WOOD LUMBER USED FOR SHEATHING, FRAMING AND BLOCKING TO BE FIRE RETARDANT TREATED TYPE.
- L-SHAPE H.C. S.S. 1 1/2" DIA. GRAB BAR. PROVIDE BLOCKING IN WALLS AS REQ'D.
- EXTERIOR GUARDRAIL AND HANDRAIL TO BE WELDED 1 1/2" DIA. STEEL PIPES, SLEEVE INTO CONCRETE.



**1 UPPER FLOOR PLAN**  
SCALE: 1/8" = 1'-0"



**2 GROUND FLOOR PLAN**  
SCALE: 1/8" = 1'-0"

FINISH SCHEDULE									
ROOM NO.	ROOM NAME	FLOOR	WALLS				CEILING	BASE	REMARKS
			N	S	E	W			
FIRST FLOOR									
101	RECEPTION/RETAIL	CPT-1	PT-1	PT-1	PT-1	PT-1	ATC-1	VB-1	REMARKS
102	CORRIDOR	CPT-1	PT-1	PT-1	PT-1	PT-1	ATC-1	VB-1	
103	H.C. TOILET	VCT-1	PT-1	PT-1	PT-1	PT-1	ATC-1	VB-2	
104	OFFICE	CPT-1	PT-1	PT-1	PT-1	PT-1	ATC-1	VB-1	
105	OFFICE	CPT-1	PT-1	PT-1	PT-1	PT-1	ATC-1	VB-1	
106	TECH SHOP	VCT-1	PT-1	PT-1	PT-1	PT-1	ATC-1	VB-1	
107	MECH. CLOSET	CONC.	PT-1	PT-1	PT-1	PT-1	NO CLG.	VB-2	
108	BREAK ROOM	VCT-1	PT-1	PT-1	PT-1	PT-1	ATC-1	VB-2	
109	OFFICE	CPT-1	PT-1	PT-1	PT-1	PT-1	ATC-1	VB-1	
110	TOILET	VCT-1	PT-1	PT-1	PT-1	PT-1	ATC-1	VB-2	
111	BAY	PT-2	PT-1	PT-1	PT-1	PT-1	NO CLG.	NO BASE	EPOXY 3100 III, WALLS NO PAINT
111	STAIR	WD-1	PT-1	PT-1	PT-1	PT-1	ATC-1	WD-1	
SECOND FLOOR									
201	STAGING/STORAGE	CONC.	PT-1	PT-1	PT-1	PT-1	NO CLG.	VB-2	
202	VESTIBULE	CONC.	PT-1	PT-1	PT-1	PT-1	NO CLG.	VB-2	
203	MECH. CLOSET	CONC.	PT-1	PT-1	PT-1	PT-1	NO CLG.	VB-2	
204	STORAGE	CONC.	PT-1	PT-1	PT-1	PT-1	NO CLG.	VB-2	
204	TOILET	VCT-1	PT-1	PT-1	PT-1	PT-1	ATC-1	VB-2	
205	STAIR/LANDING	CPT-1	PT-1	PT-1	PT-1	PT-1	ATC-1	WB-1/VB-2	

**FINISH NOTES**

- |  |  |
|--|--|
| CPT-1 DIRECT GLUE DOWN CARPET (COMMERCIAL GRADE)               | PT-3 INTERIOR OIL PAINT-SEMIGLOSS FINISH                           |
| CONC. EXPOSED CONCRETE WITH A POLISHED FLOAT FINISH AND SEALED | PT-4 INTERIOR POLYURETHANE CONCRETE SLAB PAINT                     |
| VCT-1 12" X 12" VINYL COMPOSITION TILE                         | ATC-1 SUSPENDED 2 X 4 ACOUSTIC TILE CEILING WITH EXPOSED 1/2" GRID |
| WD-1 WOOD TREADS AND RISERS WITH CLEAR POLYURETHANE FINISH     | VB-1 4" VINYL BASE-FLAT  |
| PT-1 INTERIOR LATEX PAINT-FLAT FINISH                          | VB-2 4" VINYL BASE-COVED   |
| PT-2 INTERIOR LATEX MASONRY PAINT-SEMIGLOSS FINISH             | WB-1 4" WOOD BASE-FOR PAINT  |

