

MEDICAL OFFICE FOR LEASE

BAY AREA COMMUNITY HEALTH PAVILION

TWO SUITES AVAILABLE

9460 NO NAME UNO
GILROY, CA 95020



NEWMARK

Mike Spiro
Executive Managing Director
CA RE #01433395
t 510-681-7918
Mike.Spiro@nrmk.com

Luke Allard
Director
CA RE #01002706
t 408-982-8492
Luke.Allard@nrmk.com

PROPERTY DETAILS

- 2-Story Building
- Pharmacy On Site
- After Hours Keypad Access
- Adjacent to St. Louise Regional Hospital
- 100 Surface Parking
- Easy 101 Freeway Access
- A Short Drive to Amenities at Gilroy Premium Outlets, Pacheco Pass Center, Gilroy Crossing, and downtown Gilroy.



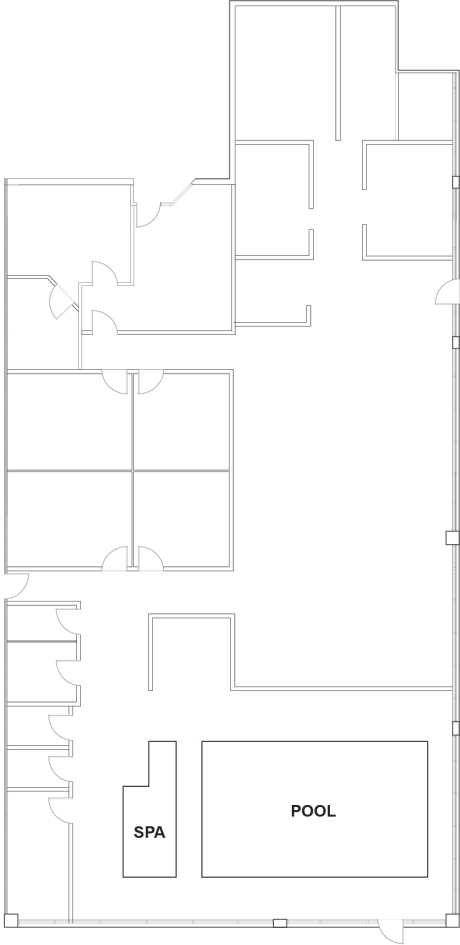
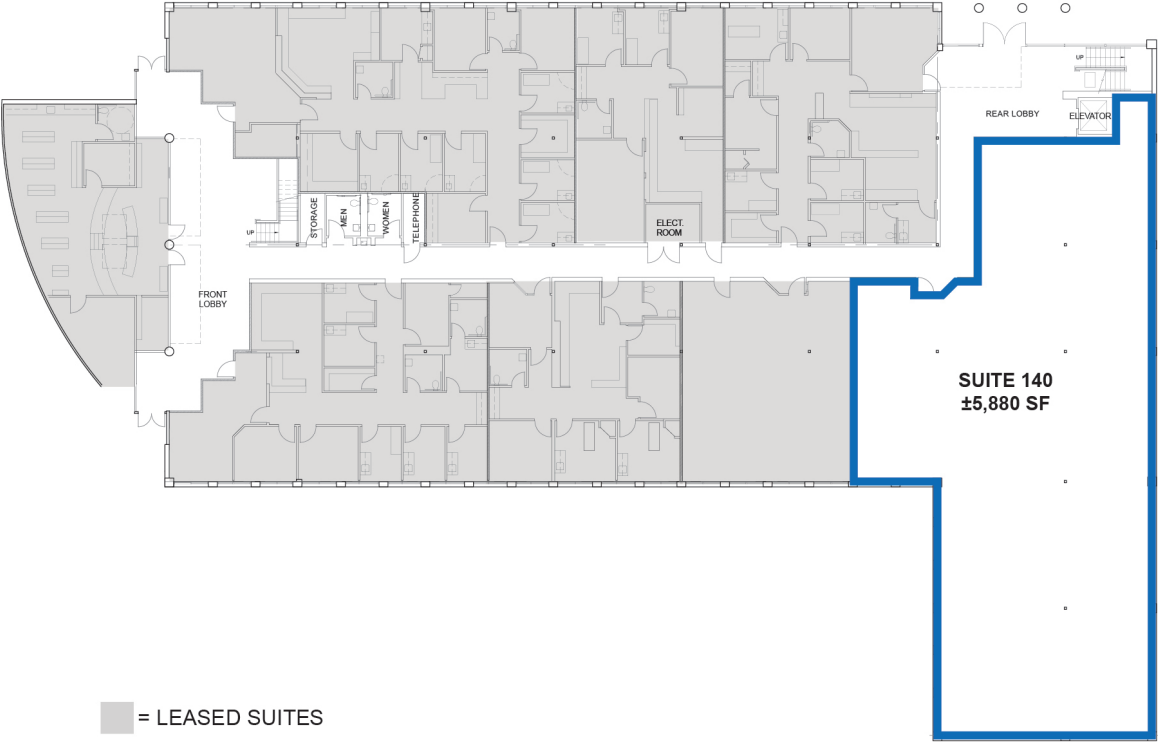
SUITE 140

- 5,880 SF
- Three (3) Private Offices
- Open Area
- Conference Room
- Break Room
- Private Restroom
- Reception and Lobby Area
- Pool and Spa
- Laundry Room
- Showers
- Two (2) Dressing Rooms
- Former Physical Therapy

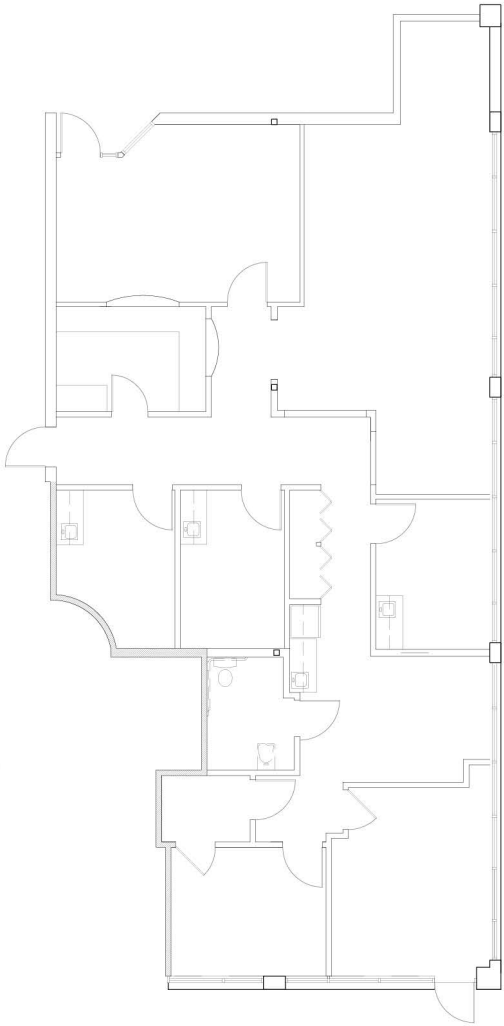
SUITE 250

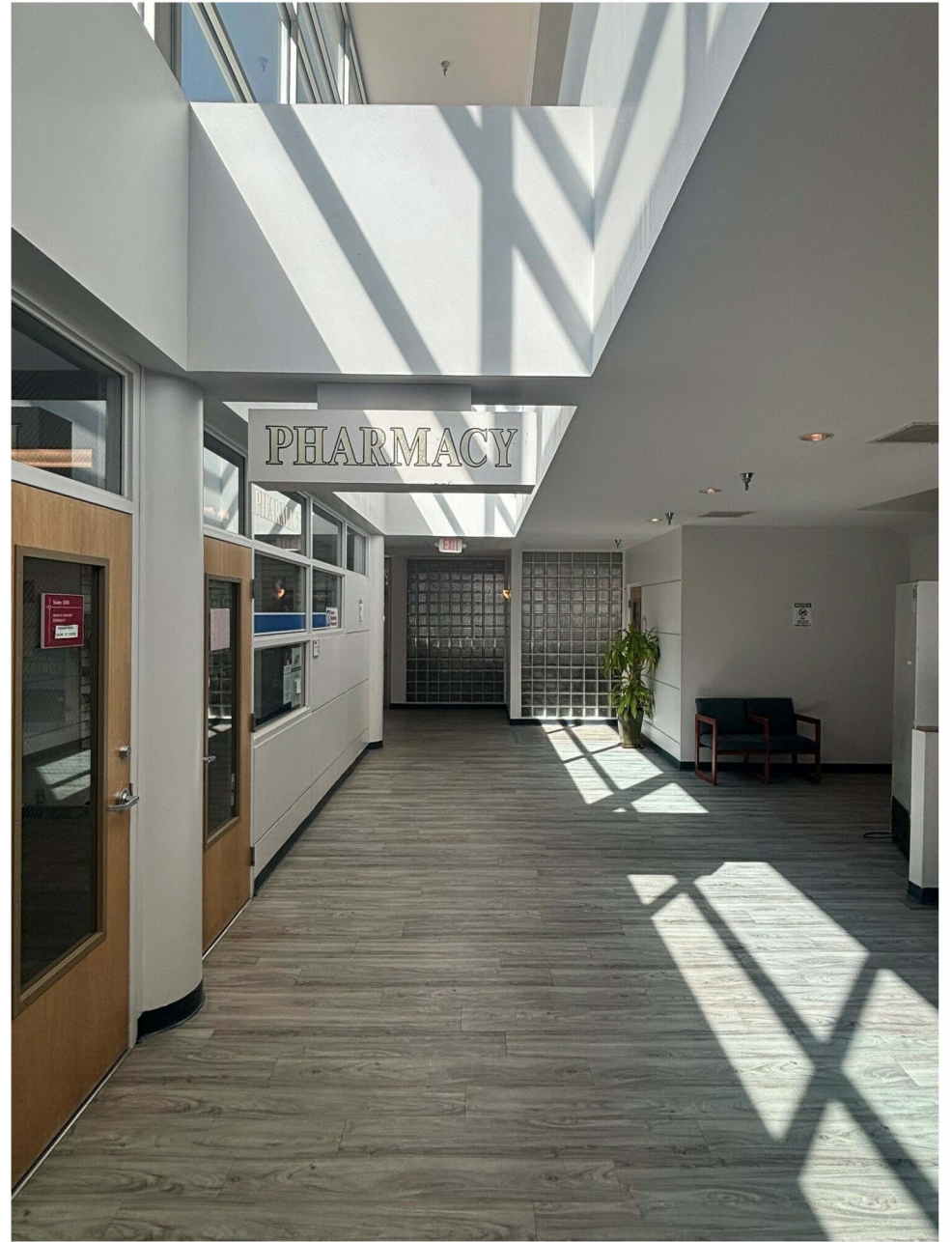
- 2,317 SF
- Three (3) Exam Rooms with Sinks and Cabinetry
- Private Offices
- Conference Rooms
- Private Restroom
- Open Office Area
- Reception Check-in at Lobby Entrance
- Former Family Medicine Practice

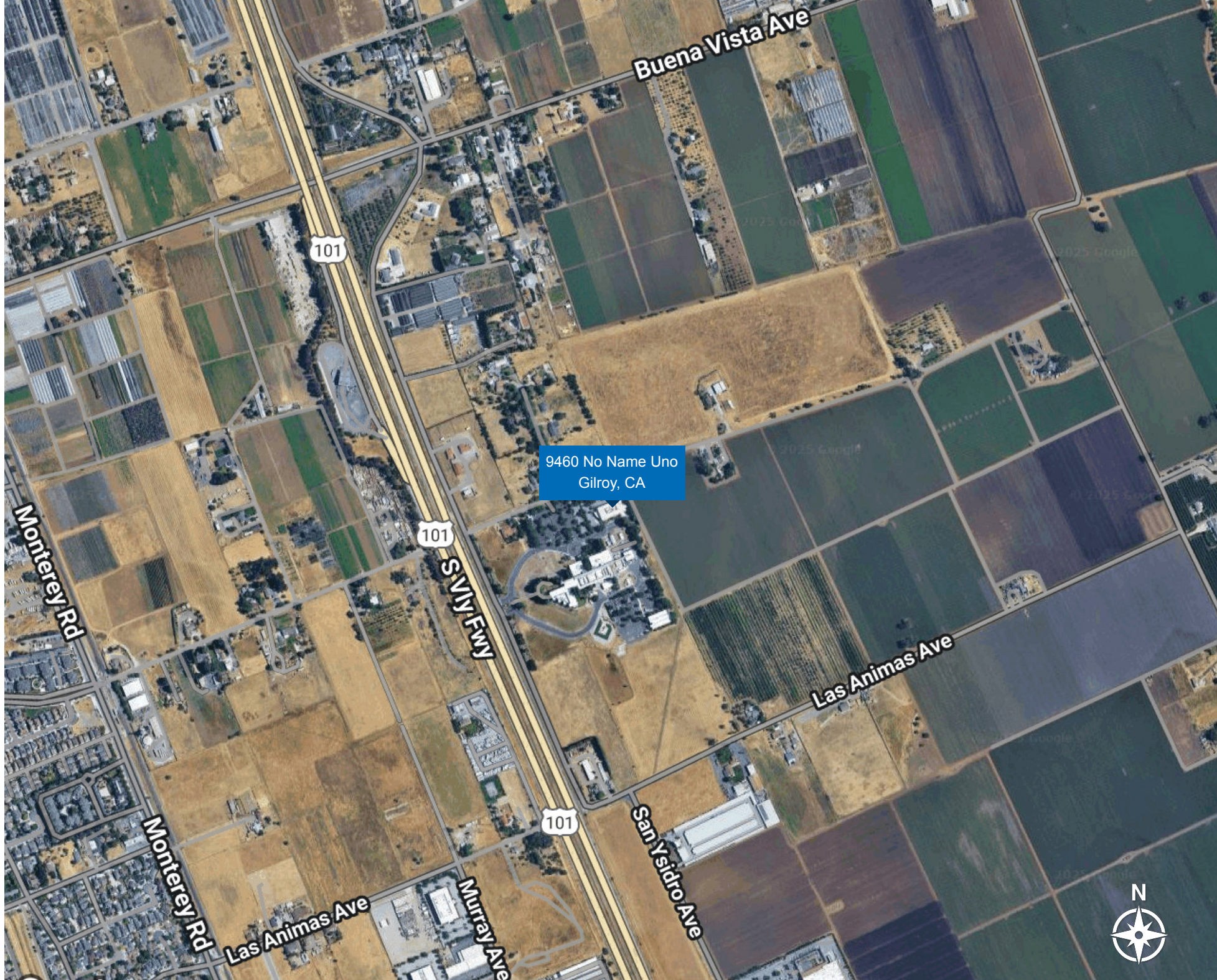
SUITE 140: ±5,880 SF



SUITE 250: ±2,317 SF







Buena Vista Ave

101

9460 No Name Uno
Gilroy, CA

101

S VINY FWY

Monterey Rd

Las Animas Ave

101

San Ysidro Ave

Monterey Rd

Las Animas Ave

Murray Ave





Mike Spiro

Executive Managing Director

CA RE #01433395

t 510-681-7918

Mike.Spiro@nmrk.com

Luke Allard

Director

CA RE #01002706

t 408-982-8492

Luke.Allard@nmrk.com

3055 Olin Ave Suite 2200
San Jose, CA 95128



NEWMARK

Corporate License #0832933

The information contained herein has been obtained from sources deemed reliable but has not been verified and no guarantee, warranty or representation, either express or implied, is made with respect to such information. Terms of sale or lease and availability are subject to change or withdrawal without notice.

nmrk.com