

# EXPRESSWAY CORPORATE CENTER



## INDUSTRIAL FOR LEASE

3101-3131 S PARK DR, 3010-3120 S POTTER DR, 2307-2315 W FAIRMONT DR  
TEMPE | ARIZONA | 85282

### FOR MORE INFORMATION, PLEASE CONTACT:

**DARIN EDWARDS**

D 480.214.1117

M 480.628.8661

dedwards@cpiaz.com

**CORY SPOSI**

D 480.621.4025

M 480.586.1195

csposi@cpiaz.com

### COMMERCIAL PROPERTIES INC.

2323 W University Dr

Tempe, AZ, 85281

www.cpiaz.com

## PROPERTY FEATURES

- ±77,525 SF – Multi-Tenant Industrial Park
- Centralized location with easy access to I-10, SR-143, & Sky Harbor International Airport
- Air Conditioned and EVAP Cooled Spaces
- Heavy Power
- 10'x12' Grade Level Doors
- 14'-16' Clear Height
- Ample Parking



*The information contained herein has been obtained from various sources. We have no reason to doubt its accuracy; however, J & J Commercial Properties, Inc. has not verified such information and makes no guarantee, warranty or representation about such information. The prospective buyer or lessee should independently verify all dimensions, specifications, floor plans, and all information prior to the lease or purchase of the property. All offerings are subject to prior sale, lease, or withdrawal from the market without prior notice.*

09 25 25



# EXPRESSWAY CORPORATE CENTER

## SITE PLAN

UNDER NEW OWNERSHIP



**3015 S Park Dr - ±7,072 SF**  
Suite 1

**2315 W Fairmont Dr - ±6,627 SF**  
Suite 2

**2307 W Fairmont Dr - ±6,700 SF**  
Suite 3

**3010 S Potter Dr - ±7,012 SF**  
Suite 4

**3101 S Park Dr - ±6,880 SF**  
Suite 5A & 5B

**3011 S Park Dr - ±6,434 SF**  
Suite 6

**3121 S Park Dr - ±5,768 SF**  
Suite 7

**3131 S Park Dr - ±6,666 SF**  
Suite 8

**3110 S Potter Dr - ±13,057 SF**  
Suite 9

**3120 S Potter Dr - ±13,057 SF**  
Suite 10A & 10B



### AVAILABILITIES

BLDG	SUITE	SF	OFFICE %	OFFICE LAYOUT
3015	1	*±7,072	-	Break Room, Bull Pen, & 2 Restrooms
2315	2	*±6,627	-	Reception, 3 Offices, Bull Pen, Break Room, & 4 Restrooms
*Contiguous up to ±13,699				

■ AVAILABLE ■ OCCUPIED

### FOR MORE INFORMATION, PLEASE CONTACT:

**DARIN EDWARDS**  
D 480.214.1117  
M 480.628.8661  
dedwards@cpiaz.com

**CORY SPOSI**  
D 480.621.4025  
M 480.586.1195  
csposi@cpiaz.com



**COMMERCIAL PROPERTIES INC.**

Locally Owned. Globally Connected. CORFAC

TEMPE: 2323 W University Drive, Tempe, AZ 85281 | 480.966.2301  
SCOTTSDALE: 8767 E Via de Commercio, Suite 101, Scottsdale, AZ 85258 | www.cpiaz.com

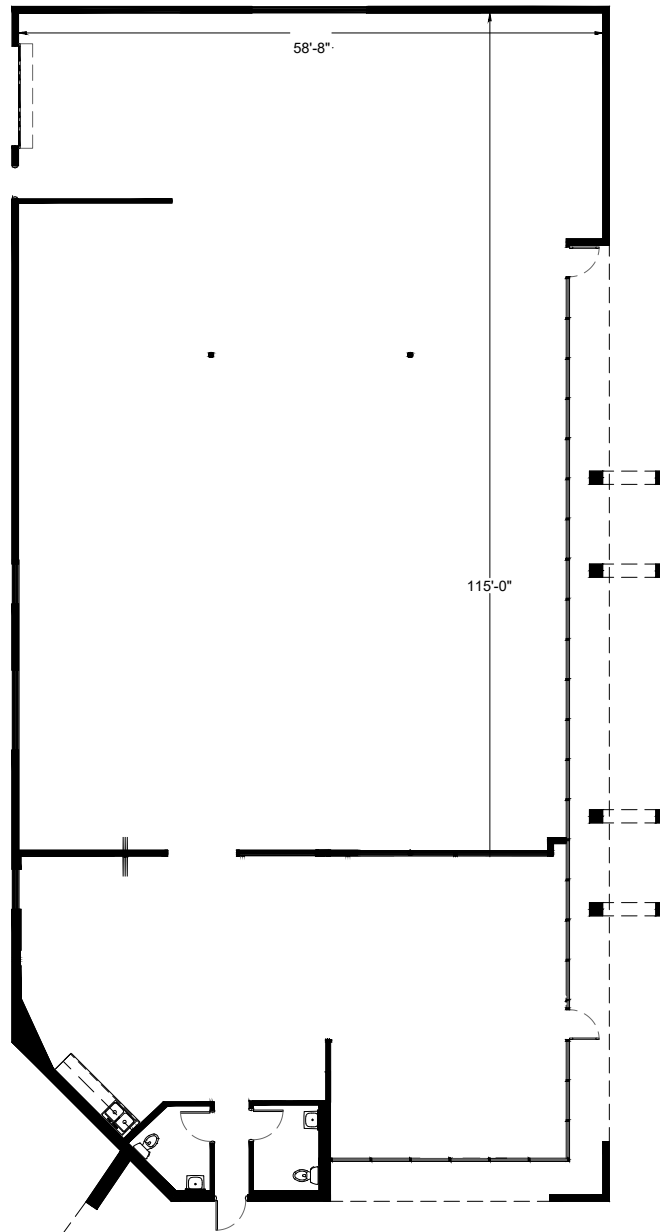
The information contained herein has been obtained from various sources. We have no reason to doubt its accuracy; however, J & J Commercial Properties, Inc. has not verified such information and makes no guarantee, warranty or representation about such information. The prospective buyer or lessee should independently verify all dimensions, specifications, floor plans, and all information prior to the lease or purchase of the property. All offerings are subject to prior sale, lease, or withdrawal from the market without prior notice.

09 25 25

# EXPRESSWAY CORPORATE CENTER

3015 S PARK DR, SUITE 1 (±7,072 SF) \*CONTIGUOUS WITH 2315, STE 2

UNDER NEW OWNERSHIP



## FOR MORE INFORMATION

**DARIN EDWARDS**  
D 480.214.1117  
M 480.628.8661  
dedwards@cpiaz.com

**CORY SPOSI**  
D 480.621.4025  
M 480.586.1195  
csposi@cpiaz.com

**COMMERCIAL PROPERTIES INC.**  
2323 W University Dr  
Tempe, AZ, 85281  
www.cpiaz.com

**EXPRESSWAY CORPORATE CTR.**  
3101-3131 S PARK DR  
3010-3120 S POTTER DR  
2307-2315 W FAIRMONT DR  
TEMPE, AZ 85282



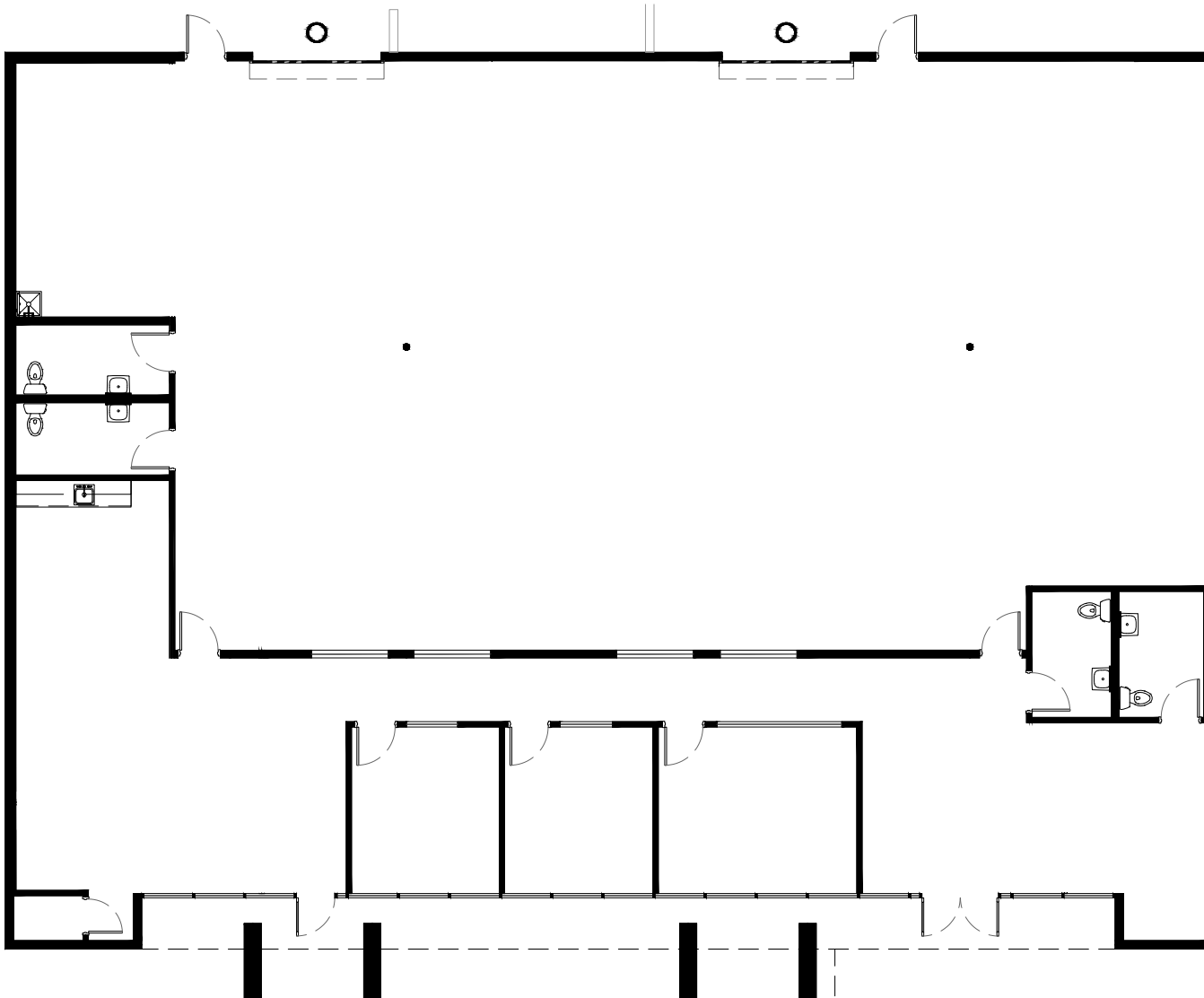
*The information contained herein has been obtained from various sources. We have no reason to doubt its accuracy; however, J & J Commercial Properties, Inc. has not verified such information and makes no guarantee, warranty or representation about such information. The prospective buyer or lessee should independently verify all dimensions, specifications, floor plans, and all information prior to the lease or purchase of the property. All offerings are subject to prior sale, lease, or withdrawal from the market without prior notice.*

09 25 25

# EXPRESSWAY CORPORATE CENTER

2315 W FAIRMONT DR, SUITE 2 (±6,627 SF) \*CONTIGUOUS WITH 3015, STE 1

UNDER NEW OWNERSHIP



## FOR MORE INFORMATION

**DARIN EDWARDS**

D 480.214.1117

M 480.628.8661

dedwards@cpiaz.com

**CORY SPOSI**

D 480.621.4025

M 480.586.1195

csposi@cpiaz.com

## COMMERCIAL PROPERTIES INC.

2323 W University Dr

Tempe, AZ, 85281

www.cpiaz.com

## EXPRESSWAY CORPORATE CTR.

3101-3131 S PARK DR

3010-3120 S POTTER DR

2307-2315 W FAIRMONT DR

TEMPE, AZ 85282



**COMMERCIAL  
PROPERTIES INC.**  
Locally Owned. Globally Connected. 

*The information contained herein has been obtained from various sources. We have no reason to doubt its accuracy; however, J & J Commercial Properties, Inc. has not verified such information and makes no guarantee, warranty or representation about such information. The prospective buyer or lessee should independently verify all dimensions, specifications, floor plans, and all information prior to the lease or purchase of the property. All offerings are subject to prior sale, lease, or withdrawal from the market without prior notice.*

09 25 25



# EXPRESSWAY CORPORATE CENTER

## AMENITIES & IMPROVEMENTS

UNDER NEW OWNERSHIP



NEARBY AMENITIES

### NEARBY AMENITIES

- Sky Harbor International Airport
- Arizona State University
- Close to Downtown Phoenix
- Easy Access to I-10 Freeway

### FOR MORE INFORMATION

**DARIN EDWARDS**  
D 480.214.1117  
M 480.628.8661  
dedwards@cpi.az.com

**CORY SPOSI**  
D 480.621.4025  
M 480.586.1195  
csposi@cpi.az.com

### COMMERCIAL PROPERTIES INC.

2323 W University Dr  
Tempe, AZ, 85281  
[www.cpi.az.com](http://www.cpi.az.com)

### EXPRESSWAY CORPORATE CTR.

3101-3131 S PARK DR  
3010-3120 S POTTER DR  
2307-2315 W FAIRMONT DR  
TEMPE, AZ 85282

