



1045 N HIGHLAND AVE

FOR SUBLEASE | 3,700 SF | MURFREESBORO

FOUNDRY  
COMMERCIAL



## PROPERTY OVERVIEW



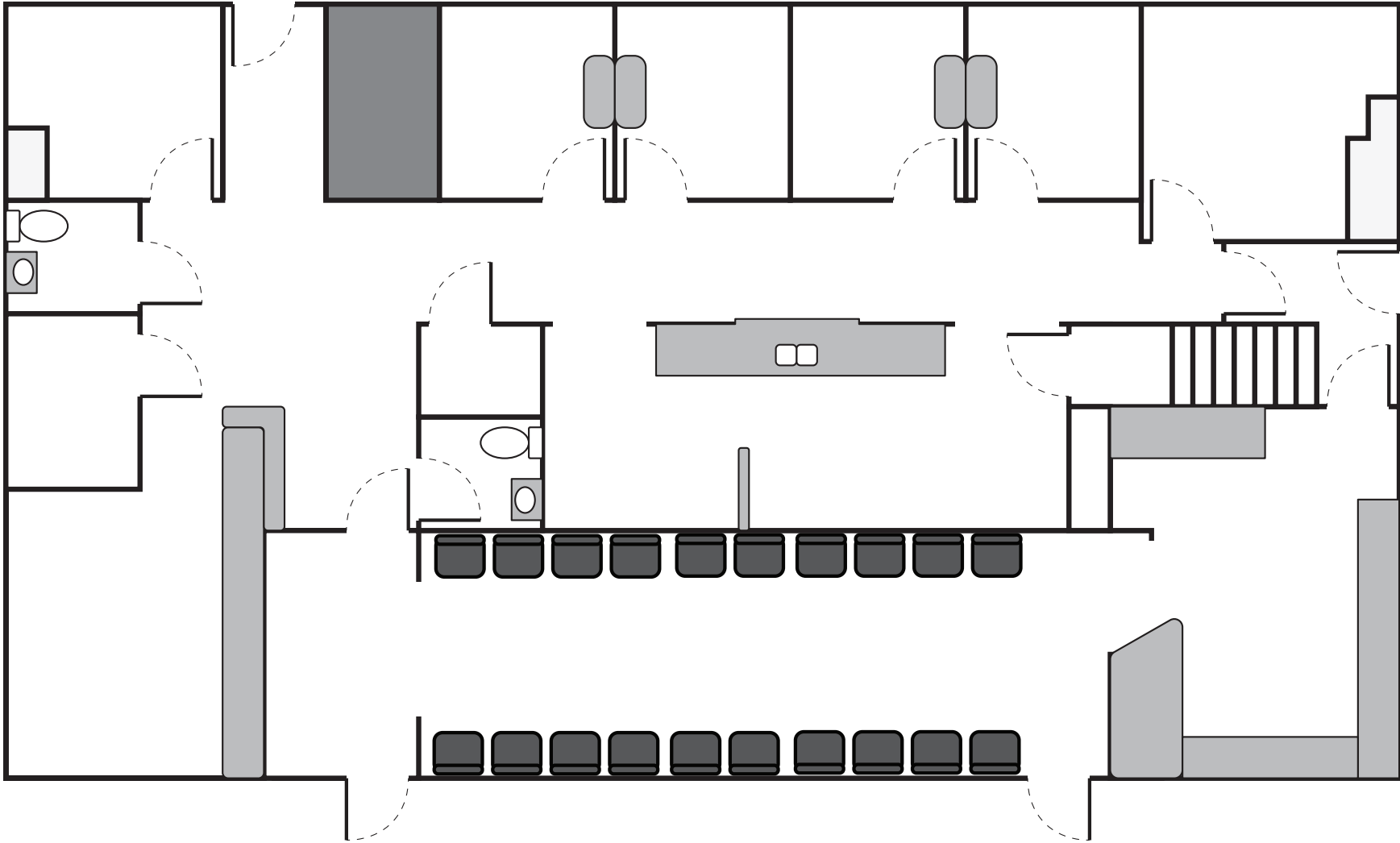
## PROPERTY DETAILS

ADDRESS	1045 N Highland Ave
SUBMARKET	Murfreesboro
SF AVAILABLE	± 3,700 SF
PARKING NOTES	Free Surface Parking
AMENITIES	Short term, move in ready medical office space available
POSSIBLE USES	Medical Office
RATE	\$17.00/SF
AVAILABLE	Immediately
TERM	Expires 3/11/2026

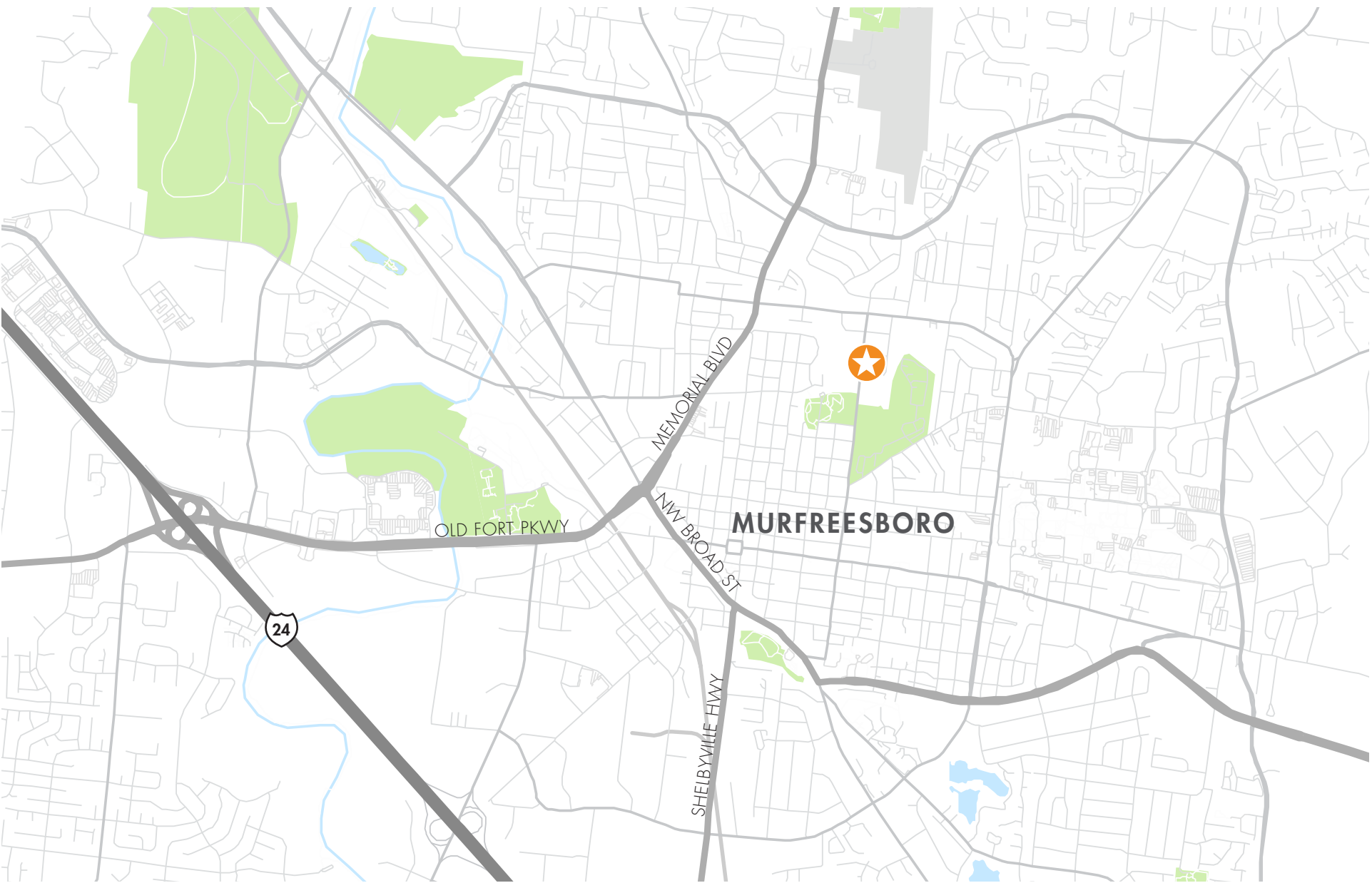
## PROPERTY HIGHLIGHTS

- Fully Furnished Sublease Available
- Move in Ready
- Medical Office sublease available
- 3/11/2026 Term LXD
- 2 floors

FLOOR PLAN



LOCATION MAP





1045 N HIGHLAND AVE  
MURFREESBORO, TN

---

SHELBY HALL

SHELBY.HALL@FOUNDRYCOMMERCIAL.COM

**901.517.3867**

FOUNDRY  
COMMERCIAL

foundrycommercial.com

