

FOR LEASE/SALE

FIFE INDUSTRIAL



- **18,754 SQ. FT.**
(1,830 SF OFFICE, MEZZ, BATHROOM)
 - I-5 VISIBILITY ADJACENT TO LARSEN CADILLAC.
 - **1.24 ACRES**
-ABUNDANT PARKING WITH SECURED FENCE AREA APPROX 30 STALLS.
 - 3 GL DOORS
(ONE 14'X16', TWO 12'X12').
-FLOOR DRAINS
-SPRINKLERED
-30' X 40' COLUMN SPACING
 - AVAILABLE AND READY TO TOUR
- \$4,315,000**

6407 20TH Street East Fife, WA



For more information please contact:

Brent Nelson
425.455.2664
brent@saratogaequities.com



SARATOGA
EQUITIES

www.saratogaequities.com

Fife Warehouse – 6407 20TH Street E.



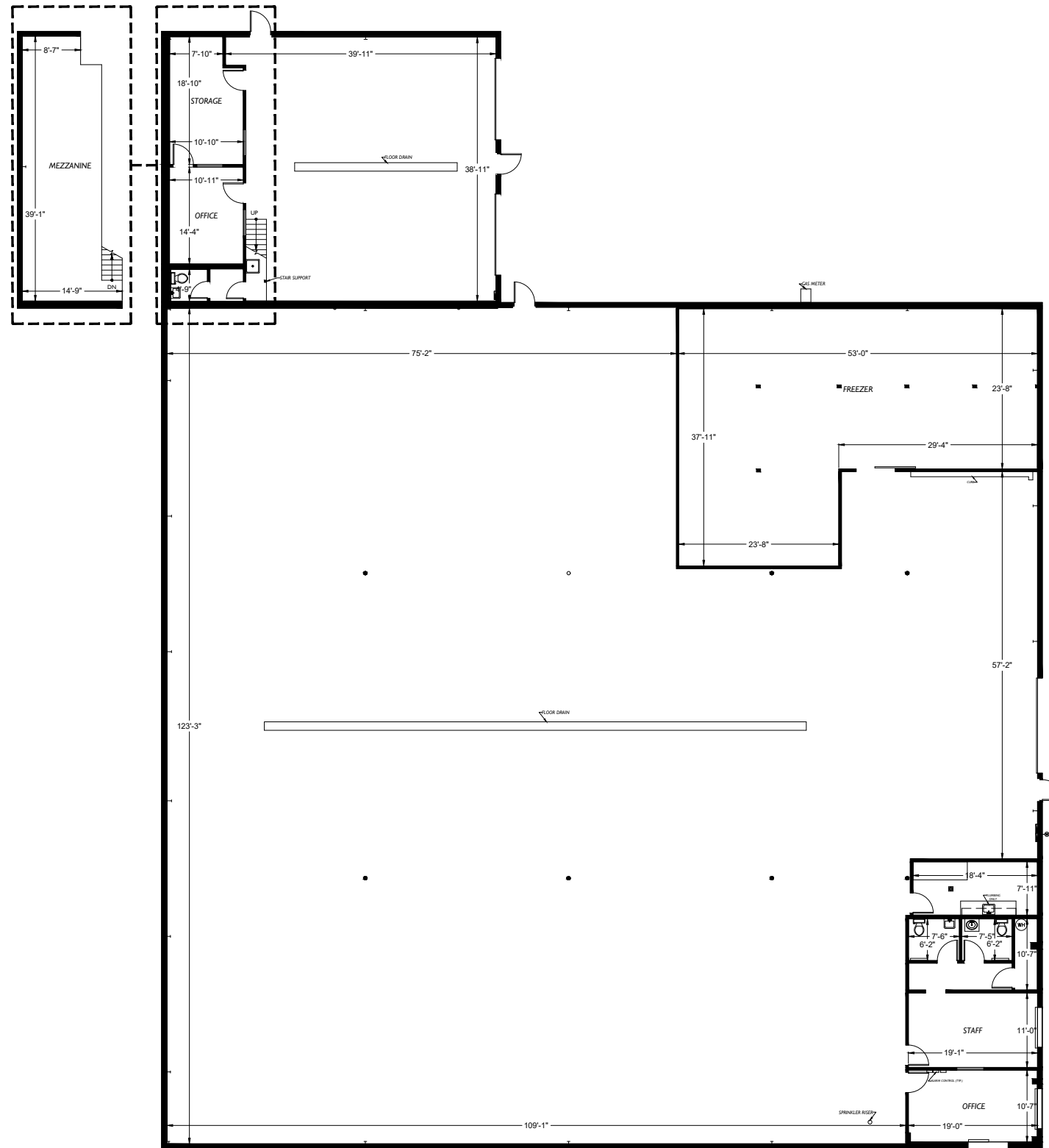
For more information please contact:

Brent Nelson
425.455.2664
brent@saratogaequities.com



SARATOGA
EQUITIES

www.saratogaequities.com



Parking
 20th Street E

Project: C24-167

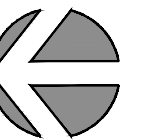
Date	Action
1/21/2024	Initial Site Measurement
C24-167	

Client:

PCK-DLK II, LLC

Site:

Office/Warehouse Building
 6407 20th Street E
 Fife, WA 98424



Floor Plan



Floor

