



Specifications

±0.78 Acres (Vacant Land)  
LOT SIZE

Block 567, Lot 1.06  
LEGAL DESCRIPTION

250' x 100'  
DIMENSIONS

Sonic, Wawa, Hess Station, Subway,  
Auto Zone, McDonald's Nearby  
Walking Distance to Bus Stop  
No Fast Food, Fuel, Auto Parts  
Stores and No Parking of Any  
Type of Vehicles Allowed  
COMMENTS

\$18,508.88  
TAXES (2025)

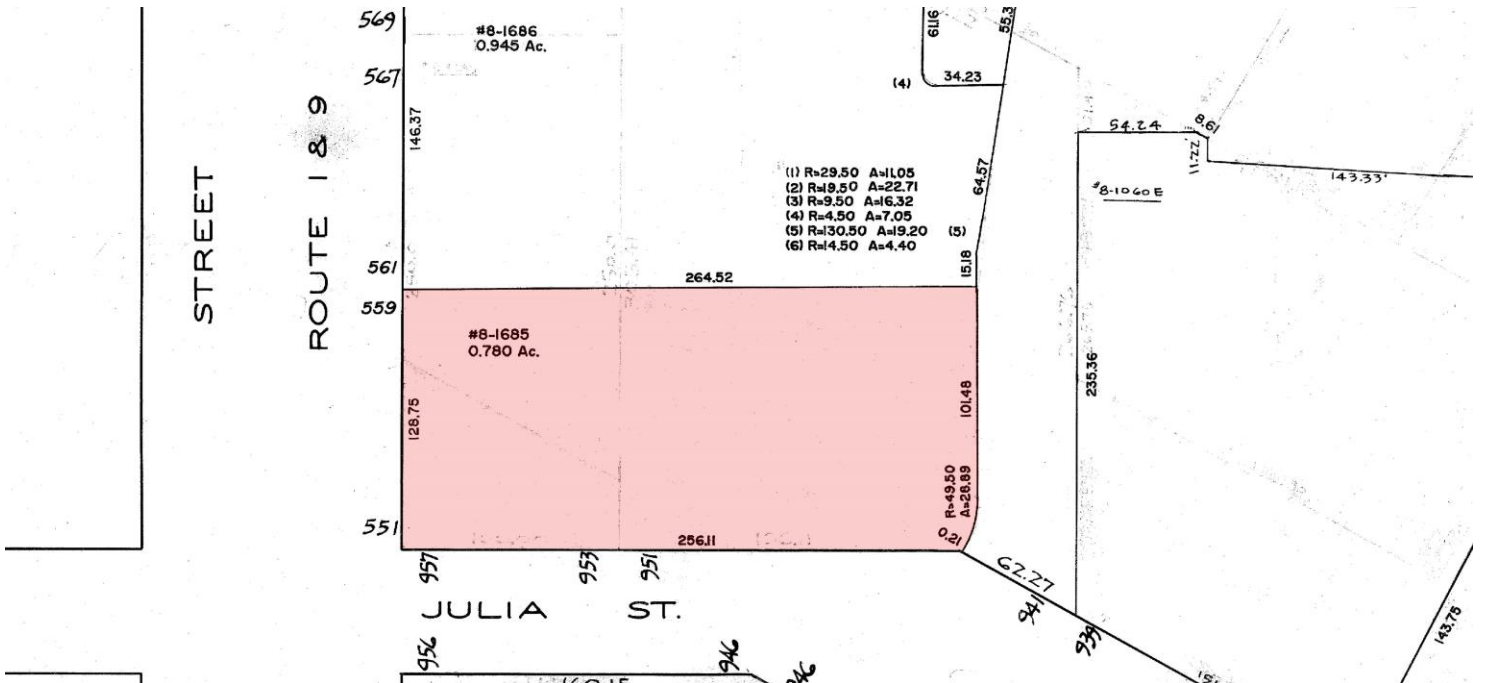
\$29,000 Per Month NNN  
GROUND LEASE RATE

For additional property information or to arrange an inspection, please contact the exclusive brokers:

Jason M. Crimmins, CCIM, SIOR  
President  
973.379.6644 x 122  
jmcrimmins@blauberg.com

Alessandro (Alex) Conte, CCIM, SIOR  
Executive Vice President  
973.379.6644 x 131  
aconte@blauberg.com

Peter J. Murano, Jr., SIOR  
Managing Executive Director  
973.379.6644 x 114  
pjmurano@blauberg.com



For additional property information or to arrange an inspection, please contact the exclusive brokers:

Jason M. Crimmins, CCIM, SIOR  
 President  
 973.379.6644 x 122  
 jmcrimmins@blauberg.com

Alessandro (Alex) Conte, CCIM, SIOR  
 Executive Vice President  
 973.379.6644 x 131  
 acont@blauberg.com

Peter J. Murano, Jr., SIOR  
 Managing Executive Director  
 973.379.6644 x 114  
 pjmurano@blauberg.com



**5 MILES**

- Total Population: 681,016
- Households: 244,062
- Median Household Income: \$75,861
- Average Household Size: 2.7
- Transportation to Work: 343,126
- Labor Force: 541,941

**10 MILES**

- Total Population: 2.35M
- Households: 888,138
- Median Household Income: \$100,535
- Average Household Size: 2.6
- Transportation to Work: 1.22M
- Labor Force: 1.89M

**15 MILES**

- Total Population: 6.6M
- Households: 2.68M
- Median Household Income: \$110,216
- Average Household Size: 2.4
- Transportation to Work: 3.53M
- Labor Force: 5.41M

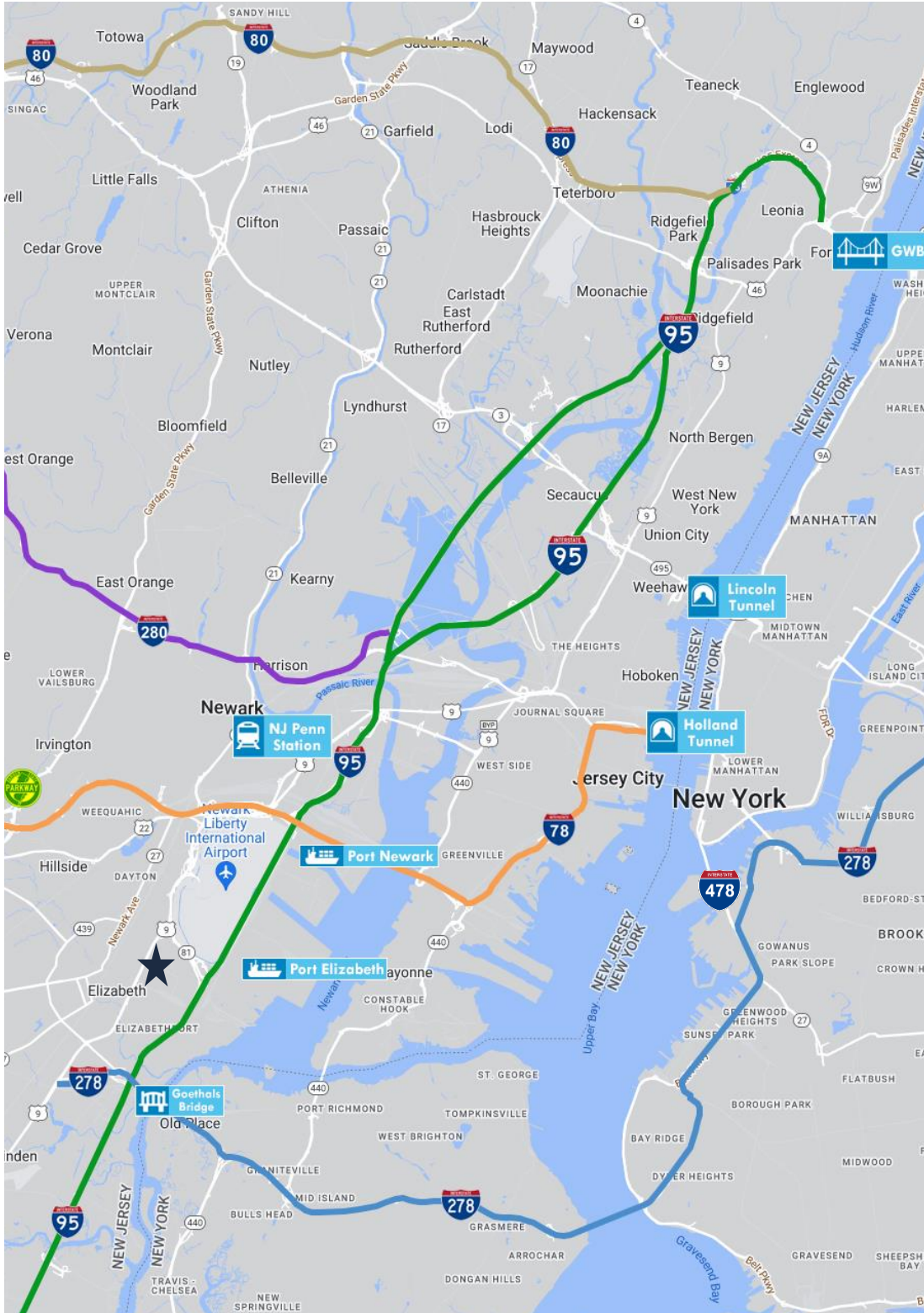
For additional property information or to arrange an inspection, please contact the exclusive brokers:

Jason M. Crimmins, CCIM, SIOR  
*President*  
 973.379.6644 x 122  
 jmcrimmins@blauberg.com


Alessandro (Alex) Conte, CCIM, SIOR  
*Executive Vice President*  
 973.379.6644 x 131  
 acont@blauberg.com

Peter J. Murano, Jr., SIOR  
*Managing Executive Director*  
 973.379.6644 x 114  
 pjmurano@blauberg.com

The information contained herein has been obtained from sources considered to be reliable, but no guarantee of its accuracy is made by this company. In addition, no representation is made respecting zoning, condition of title, dimensions, or any matters of a legal or environmental nature. Such matters should be referred to legal counsel for determination. Terms and conditions are subject to change without prior notice. Subject to errors and omissions.



**ACCESSIBILITY**

 0.3 MI  
US Hwy 1 & 9


 1.3 MI  
I-95 Exit 13A

 1.5 MI  
Newark Airport

 2.7 MI  
I-278

 2.9 MI  
I-78

 3.5 MI  
Goethals Bridge

 5.1 MI  
Penn Station

 5.9 MI  
Ports Newark & Elizabeth

 10.9 MI  
Holland Tunnel

 14.6 MI  
Lincoln Tunnel

For additional property information or to arrange an inspection, please contact the exclusive brokers:

Jason M. Crimmins, CCIM, SIOR  
President  
973.379.6644 x 122  
jmcrimmins@blauberg.com

Alessandro (Alex) Conte, CCIM, SIOR  
Executive Vice President  
973.379.6644 x 131  
aconte@blauberg.com

Peter J. Murano, Jr., SIOR  
Managing Executive Director  
973.379.6644 x 114  
pjmurano@blauberg.com