

LAND FOR SALE

±0.48 ACRES OF LEVEL LAND IN JOHANNESBURG, CA

27723 The Rand, Johannesburg, CA 93528



Sale Price

\$17,500

PROPERTY HIGHLIGHTS

- ±0.48 Acres of Open Land | Private, Quite Location
- ±200' Wide By 110' Deep (±20,908 SF) | Easy Access
- Seller-Carry Financing Available w/ 10% Down!
- Shovel Ready | Square Parcel | Buildable
- Convenient and Close Highway Access
- Easy Access via Paved Roads | Level Land w/ Many Uses
- North & South Bound Freeways Nearby
- Nearby CA-395 Freeway Access | Utilities Nearby
- Private Setting Minutes To Randsburg

OFFERING SUMMARY

Available SF:	20,908
Lot Size:	0.48 Acres
Price / SF:	\$0.83
Zoning:	R1
APN:	155-318-05-00-0
Seller Carry:	Available

We obtained the information above from sources we believe to be reliable. However, we have not verified its accuracy and make no guarantee, warranty or representation about it. It is submitted subject to the possibility of errors, omissions, change of price, rental or other conditions, prior sale, lease or financing, or withdrawal without notice. We include projections, opinions, assumptions or estimates for example only, and they may not represent current or future performance of the property. You and your tax and legal advisors should conduct your own investigation of the property and transaction.

JARED ENNIS

Executive Vice President
O: 559.705.1000
C: 559.705.1000
jared@centralcommercial.com
CA #01945284

KEVIN LAND

Executive Managing Director
O: 559.705.1000
kevin@centralcommercial.com
CA #01516541

KW COMMERCIAL
7520 N. Palm Ave #102
Fresno, CA 93711

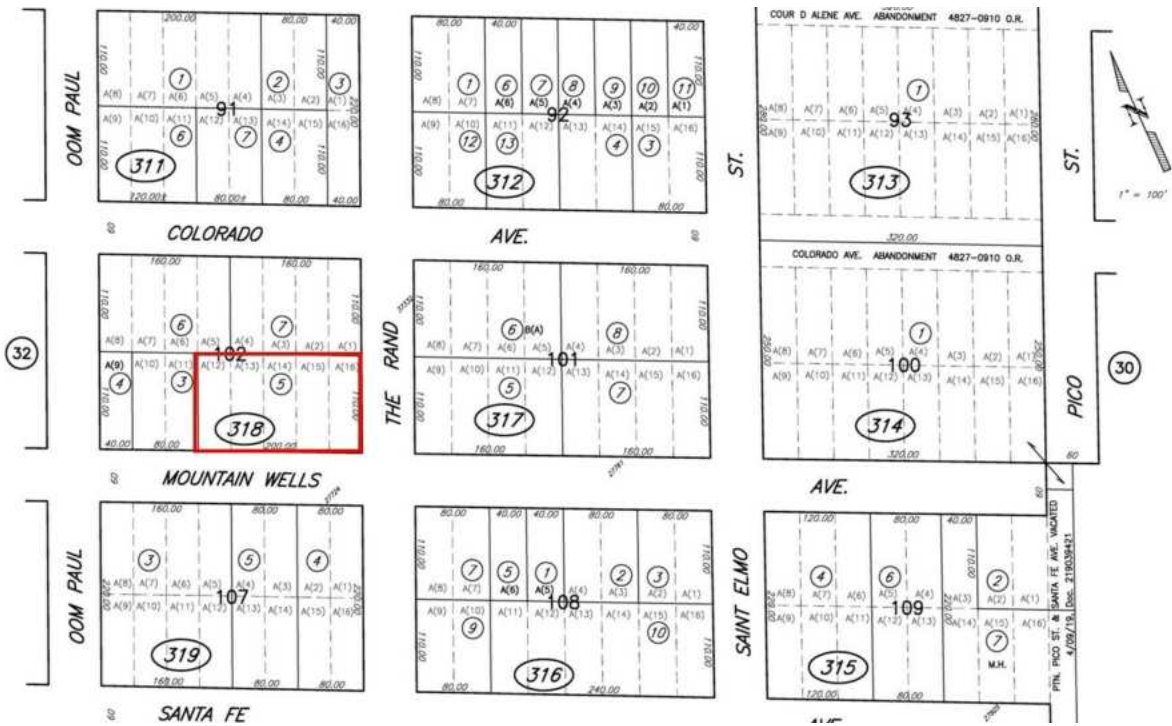
LAND FOR SALE

±0.48 ACRES OF LEVEL LAND IN JOHANNESBURG, CA

27723 The Rand, Johannesburg, CA 93528



LEGEND	
REVISED	October 23, 2020
JURISDICTION	COUNTY
SUBD. KEY	REF. SUBD. A. JOHANNESBURG B. LLA 33-82 (LOT DESIGNATIONS BY PARCEL NUMBER)
DISCLAIMER	This map is for assessment purposes only. It is not to be construed as guaranteeing legal ownership or division of land for purposes of zoning or subdivision law.
NOTES	MH=for mobilehome APN see pg. 37



PROPERTY DESCRIPTION

Level and square ±20,908 SF (±0.48 Acres) of shovel ready land located within the Johannesburg community very close to CA-395 nearby Randsburg & Ridgecrest. Property measures ±200' Wide By 110' Deep, is level and clear of all trees, and is accessible via paved roads entering from Mountain Wells Ave & The Rand. Paved road access, level area with a drive approach, electric service via poles at the east parcel line, and a paved entry road. Quite & quant location with pride of ownership homes in the area. Private neighborhood setting on the major throughfare with many homes on the block. The zoning is very flexible and allows for a variety of residential, agricultural, and other uses; mobile home, trailer, manufactured or permanent construction. The property has quick access to both Highway's CA-58 & CA-395, which allows for convenient access to all the major highways in the area. Seller-Financing is available with only 10% down!

LOCATION DESCRIPTION

Johannesburg is a census-designated place in Kern County, California, in a mining district of the Rand Mountains. Johannesburg is located 1 mile east-northeast of Randsburg, at an elevation of 3,517 feet. Johannesburg is divided from the neighboring community of Randsburg by a ridge. The town is frequently referred to as "Jo-burg" by locals and frequent visitors to the northwest Mojave.

We obtained the information above from sources we believe to be reliable. However, we have not verified its accuracy and make no guarantee, warranty or representation about it. It is submitted subject to the possibility of errors, omissions, change of price, rental or other conditions, prior sale, lease or financing, or withdrawal without notice. We include projections, opinions, assumptions or estimates for example only, and they may not represent current or future performance of the property. You and your tax and legal advisors should conduct your own investigation of the property and transaction.

JARED ENNIS
Executive Vice President
O: 559.705.1000
C: 559.705.1000
jared@centralcommercial.com
CA #01945284

KEVIN LAND
Executive Managing Director
O: 559.705.1000
kevin@centralcommercial.com
CA #01516541

KW COMMERCIAL
7520 N. Palm Ave #102
Fresno, CA 93711

LAND FOR SALE

±0.48 ACRES OF LEVEL LAND IN JOHANNESBURG, CA

27723 The Rand, Johannesburg, CA 93528



Concept 1 (3-Unit Apartment Building)



Concept 1 (3-Unit Apartment Building)



Concept 1 (3-Unit Apartment Building)



Concept 1 (3-Unit Apartment Building)



Concept 1 (3-Unit Apartment Building)



Concept 1 (3-Unit Apartment Building)

We obtained the information above from sources we believe to be reliable. However, we have not verified its accuracy and make no guarantee, warranty or representation about it. It is submitted subject to the possibility of errors, omissions, change of price, rental or other conditions, prior sale, lease or financing, or withdrawal without notice. We include projections, opinions, assumptions or estimates for example only, and they may not represent current or future performance of the property. You and your tax and legal advisors should conduct your own investigation of the property and transaction.

JARED ENNIS
Executive Vice President
O: 559.705.1000
C: 559.705.1000
jared@centralcommercial.com
CA #01945284

KEVIN LAND
Executive Managing Director
O: 559.705.1000
kevin@centralcommercial.com
CA #01516541

KW COMMERCIAL
7520 N. Palm Ave #102
Fresno, CA 93711

LAND FOR SALE

±0.48 ACRES OF LEVEL LAND IN JOHANNESBURG, CA

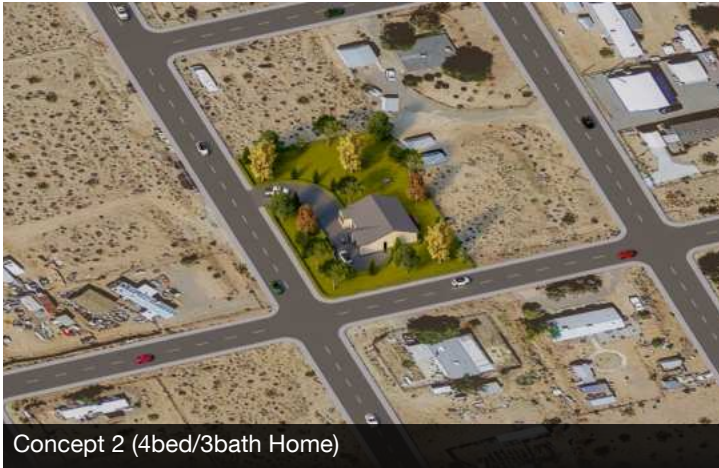
27723 The Rand, Johannesburg, CA 93528



Concept 2 (4bed/3bath Home)



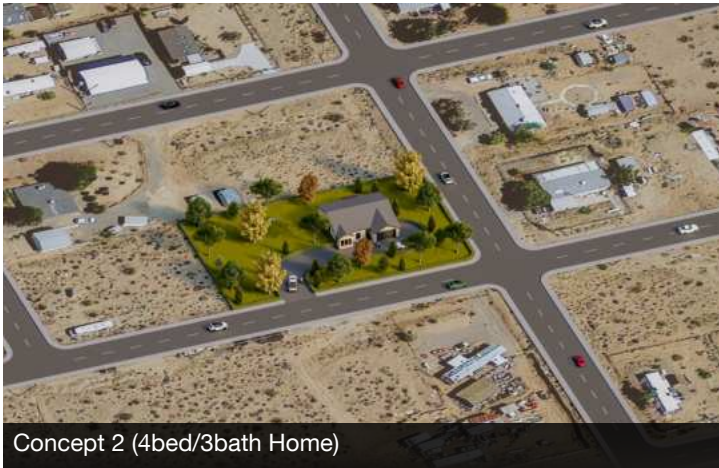
Concept 2 (4bed/3bath Home)



Concept 2 (4bed/3bath Home)



Concept 2 (4bed/3bath Home)



Concept 2 (4bed/3bath Home)



Concept 2 (4bed/3bath Home)

We obtained the information above from sources we believe to be reliable. However, we have not verified its accuracy and make no guarantee, warranty or representation about it. It is submitted subject to the possibility of errors, omissions, change of price, rental or other conditions, prior sale, lease or financing, or withdrawal without notice. We include projections, opinions, assumptions or estimates for example only, and they may not represent current or future performance of the property. You and your tax and legal advisors should conduct your own investigation of the property and transaction.

JARED ENNIS
Executive Vice President
O: 559.705.1000
C: 559.705.1000
jared@centralcacommercial.com
CA #01945284

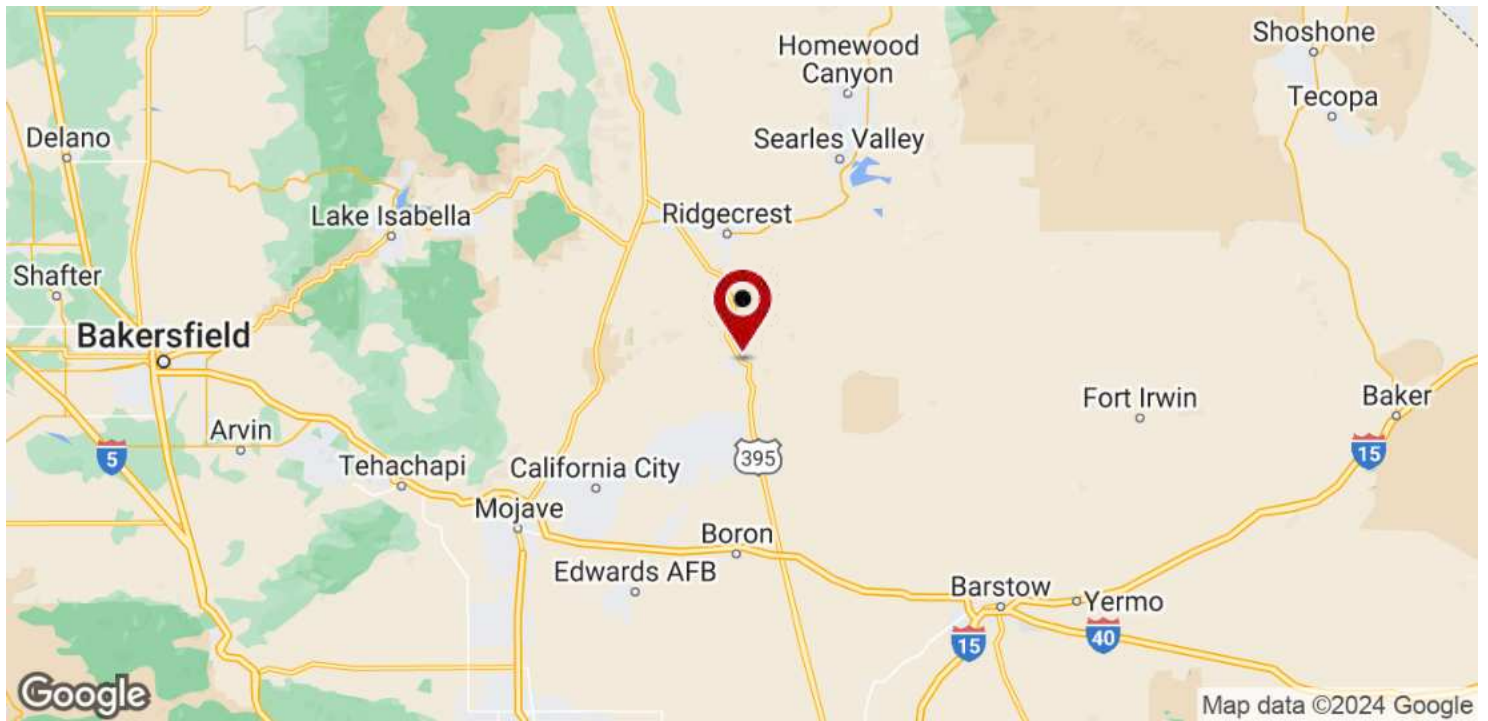
KEVIN LAND
Executive Managing Director
O: 559.705.1000
kevin@centralcacommercial.com
CA #01516541

KW COMMERCIAL
7520 N. Palm Ave #102
Fresno, CA 93711

LAND FOR SALE

±0.48 ACRES OF LEVEL LAND IN JOHANNESBURG, CA

27723 The Rand, Johannesburg, CA 93528



We obtained the information above from sources we believe to be reliable. However, we have not verified its accuracy and make no guarantee, warranty or representation about it. It is submitted subject to the possibility of errors, omissions, change of price, rental or other conditions, prior sale, lease or financing, or withdrawal without notice. We include projections, opinions, assumptions or estimates for example only, and they may not represent current or future performance of the property. You and your tax and legal advisors should conduct your own investigation of the property and transaction.

JARED ENNIS
Executive Vice President
O: 559.705.1000
C: 559.705.1000
jared@centralcommercial.com
CA #01945284

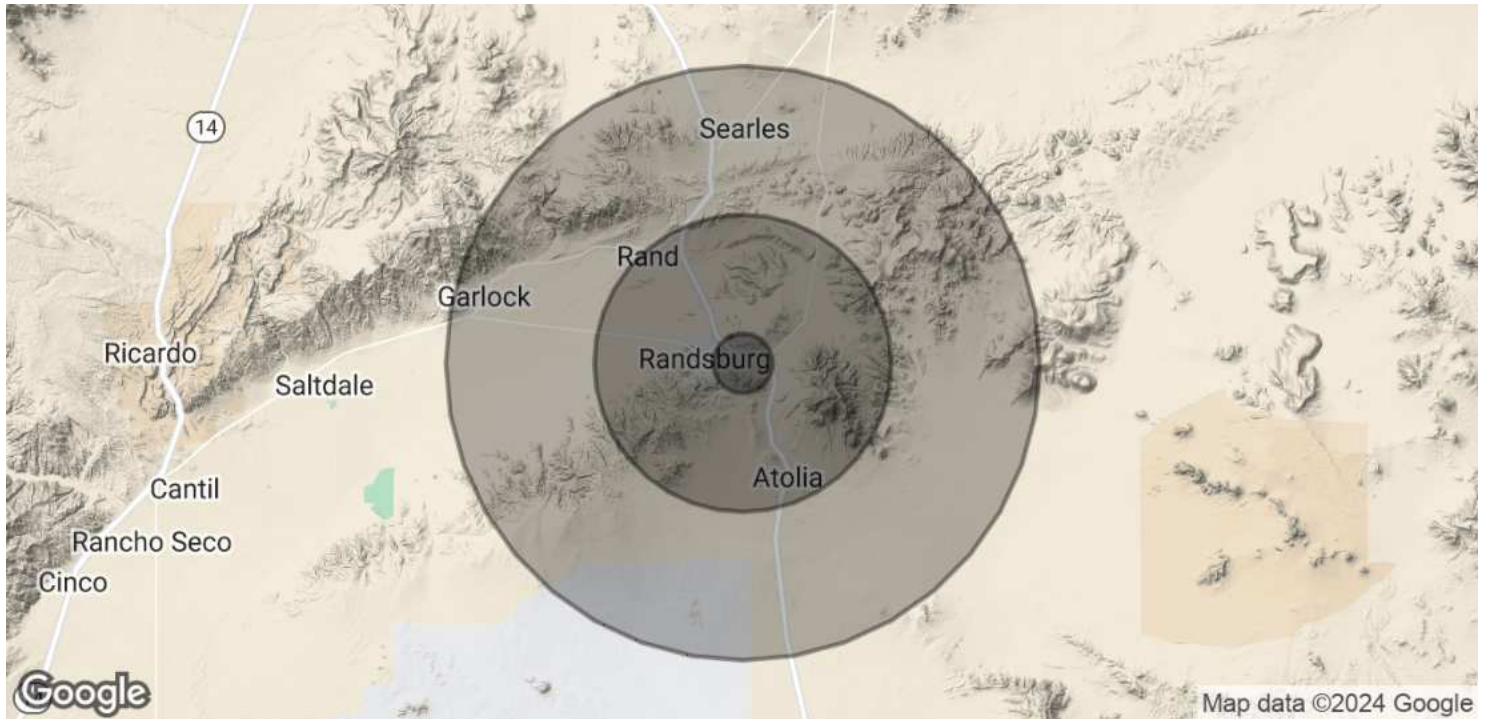
KEVIN LAND
Executive Managing Director
O: 559.705.1000
kevin@centralcommercial.com
CA #01516541

KW COMMERCIAL
7520 N. Palm Ave #102
Fresno, CA 93711

LAND FOR SALE

±0.48 ACRES OF LEVEL LAND IN JOHANNESBURG, CA

27723 The Rand, Johannesburg, CA 93528



	1 MILE	5 MILES	10 MILES
POPULATION			
Total Population	9	224	1,250
Average Age	39.1	37.3	43.6
Average Age (Male)	38.5	36.7	43.2
Average Age (Female)	75.1	68.4	63.3
HOUSEHOLDS & INCOME			
Total Households	1	46	389
# of Persons per HH	9.0	4.9	3.2
Average HH Income	\$24,690	\$19,836	\$62,128
Average House Value		\$5,209,392	\$819,702
ETHNICITY (%)			
Hispanic	44.4%	42.9%	32.6%

* Demographic data derived from 2020 ACS - US Census

We obtained the information above from sources we believe to be reliable. However, we have not verified its accuracy and make no guarantee, warranty or representation about it. It is submitted subject to the possibility of errors, omissions, change of price, rental or other conditions, prior sale, lease or financing, or withdrawal without notice. We include projections, opinions, assumptions or estimates for example only, and they may not represent current or future performance of the property. You and your tax and legal advisors should conduct your own investigation of the property and transaction.

JARED ENNIS
 Executive Vice President
 O: 559.705.1000
 C: 559.705.1000
 jared@centralcacommercial.com
 CA #01945284

KEVIN LAND
 Executive Managing Director
 O: 559.705.1000
 kevin@centralcacommercial.com
 CA #01516541

KW COMMERCIAL
 7520 N. Palm Ave #102
 Fresno, CA 93711