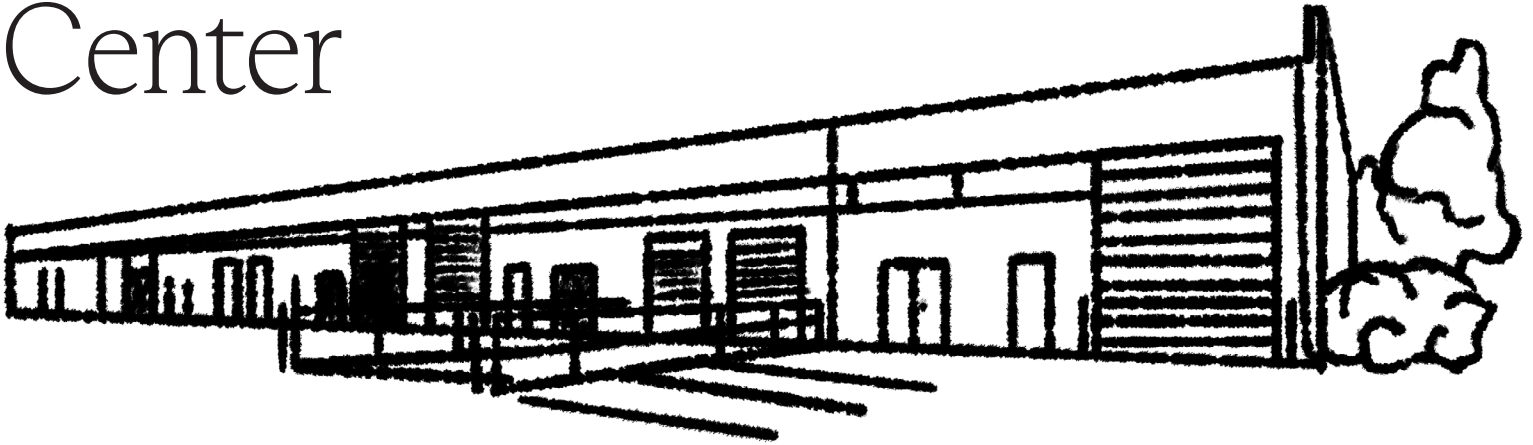




Park Industrial Center

5750 - 6360 East 58th Ave.
Commerce City, CO 80022



About

- Large industrial warehouse and office spaces in Commerce City
- Part of a large industrial complex located just North of I-270 along 56th and 58th Avenue. Located in Adams County Enterprise Zone
- Easy access to I-270, I-70, with I-225, I-76
- Ample parking and drive-through loading
- Building signage, heated warehouses, and internet speeds up to 1 gig

Details

ADDRESS	5750 - 6360 E. 58th Ave.
CITY + COUNTY	Commerce City, Adams
NUMBER OF BUILDINGS	13
CONSTRUCTED	1983-2017
OWNER	KEW Realty Corporation



KEW Realty
Corporation

300 S Jackson St #550
Denver, Colorado 80209

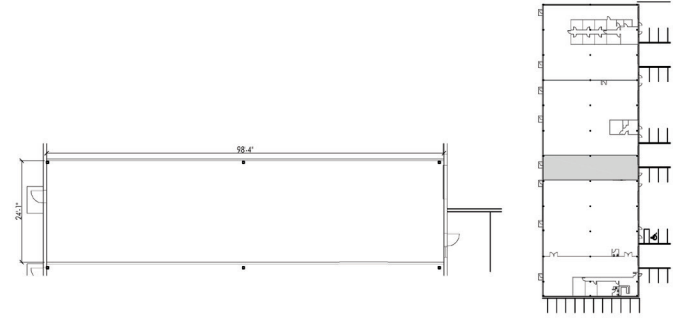
kewrealty.com

Park Industrial Center

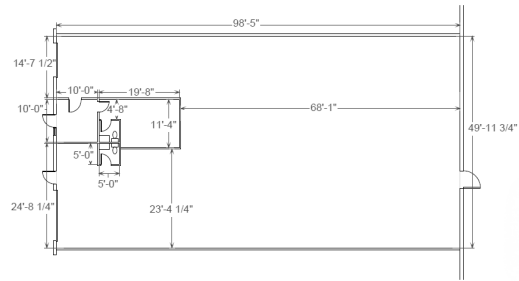
5750 - 6360 East 58th Ave.
Commerce City, CO 80022

Availability

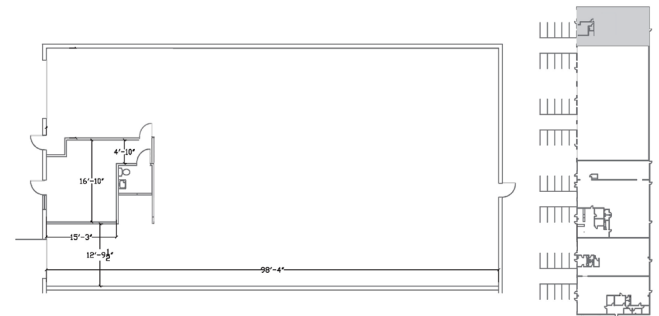
ADDRESS	5800 E. 58th Ave. - Unit G
SF & RATE	2,500 SF 10.00/SF/YR
DETAILS	This industrial unit has a large open space and 2 entrances. Great for storage.



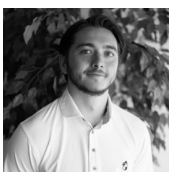
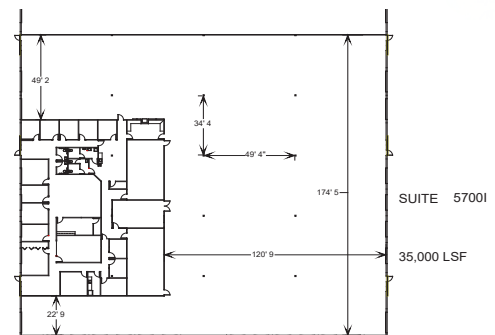
ADDRESS	6100 E. 58th Ave. - Unit B
SF & RATE	5,000 SF 10.00/SF/YR
DETAILS	This industrial unit has 1 dock-high and 1 drive-in door. Includes a small office, restrooms, and 18 foot clear heights.



ADDRESS	6125 E. 56th Ave. - Unit H
SF & RATE	5,000 SF 10.00/SF/YR
DETAILS	This industrial unit has 1 dock-high and 1 drive-in door. Includes a small office, restrooms, and 18 foot clear heights.



ADDRESS	5700 E. 56th Ave. - Unit I
SF & RATE	35,000 SF 10.00/SF/YR
DETAILS	This industrial unit has 6 entrances, several private offices, 5 restrooms, ample storage, and large open warehouse space. Includes several drive-in and dock-



Blake Ham
Leasing Manager

720.308.2230
bham@kewrealty.com



kewrealty.com