



Medical, Dental, or Office Condo



Ample, convenient parking at the front door

- ✓ Suite 204: ±3,679 SF
- ✓ Total building: ±30,980 SF
- ✓ Built in 1994
- ✓ Zoned GB-S
- ✓ Located within 5 minutes of Forsyth Medical Center - Novant Health

**Lease rate: \$18.50/PSF
plus utilities & janitorial**

Cindy Christopher
336.926.1411

1080 West Fourth Street, Winston-Salem, NC
Cindy@ChristopherCommercialNC.com

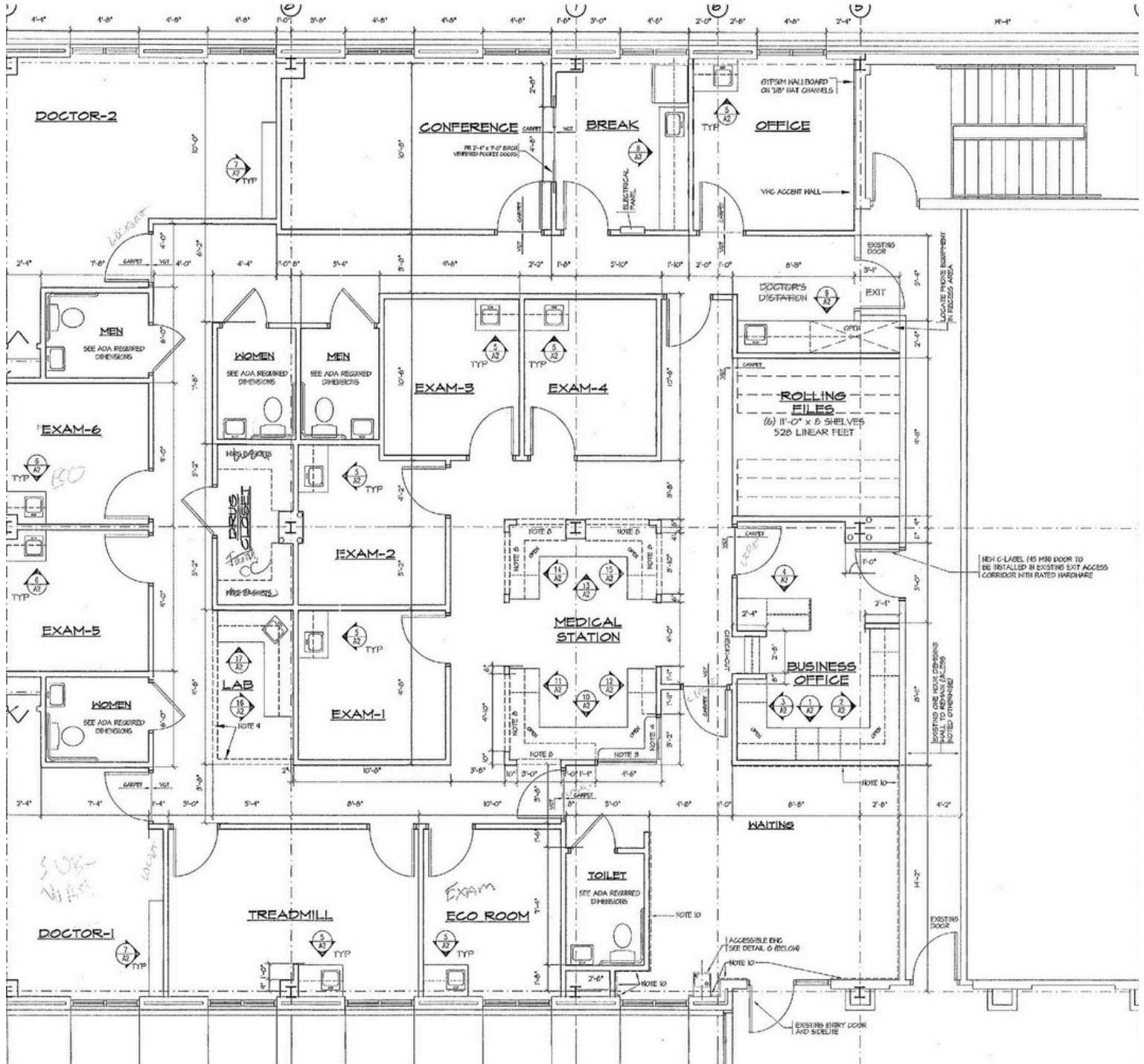


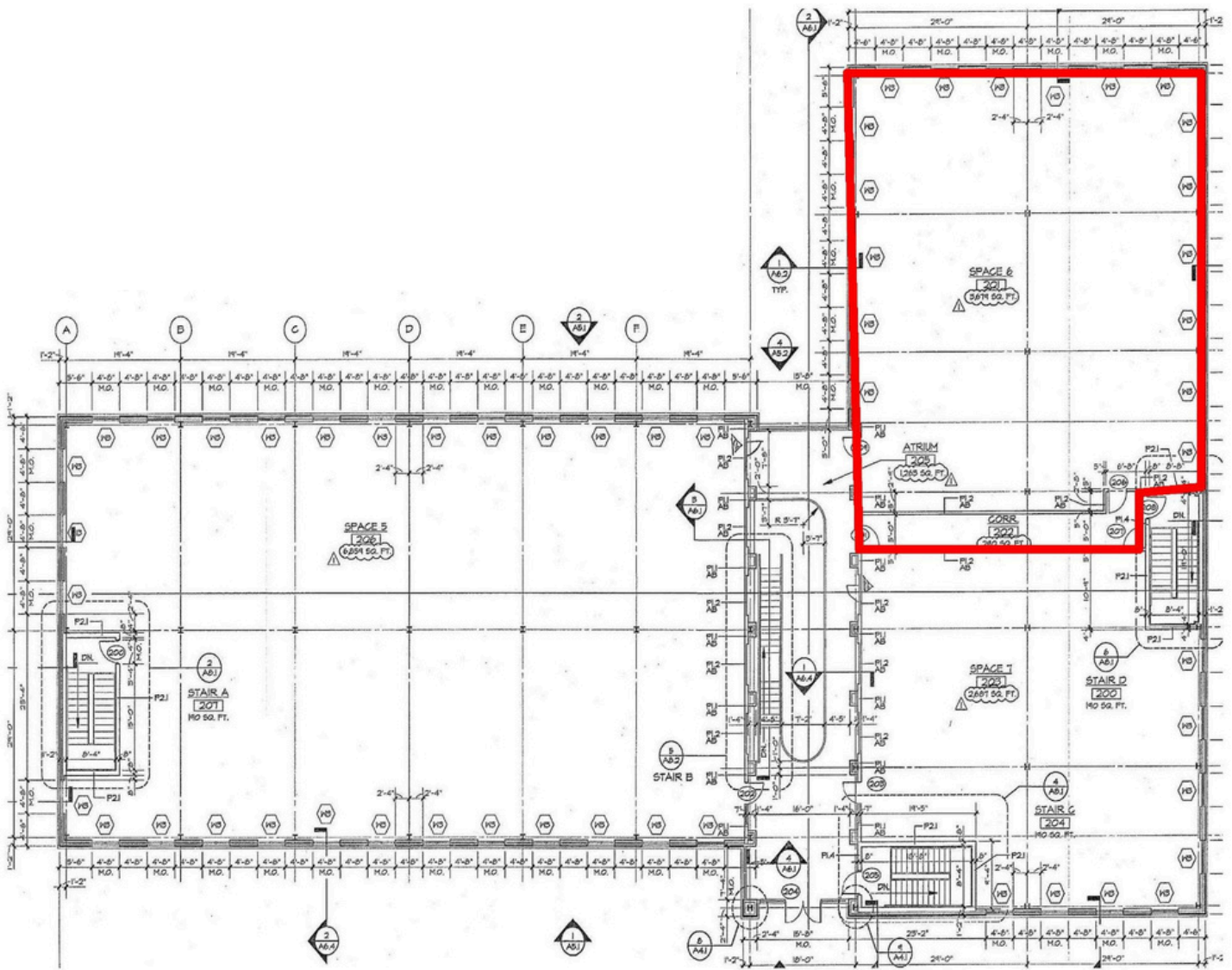
**Christopher
Commercial**
COMMERCIAL REAL ESTATE

PHOTOS



FLOOR PLAN





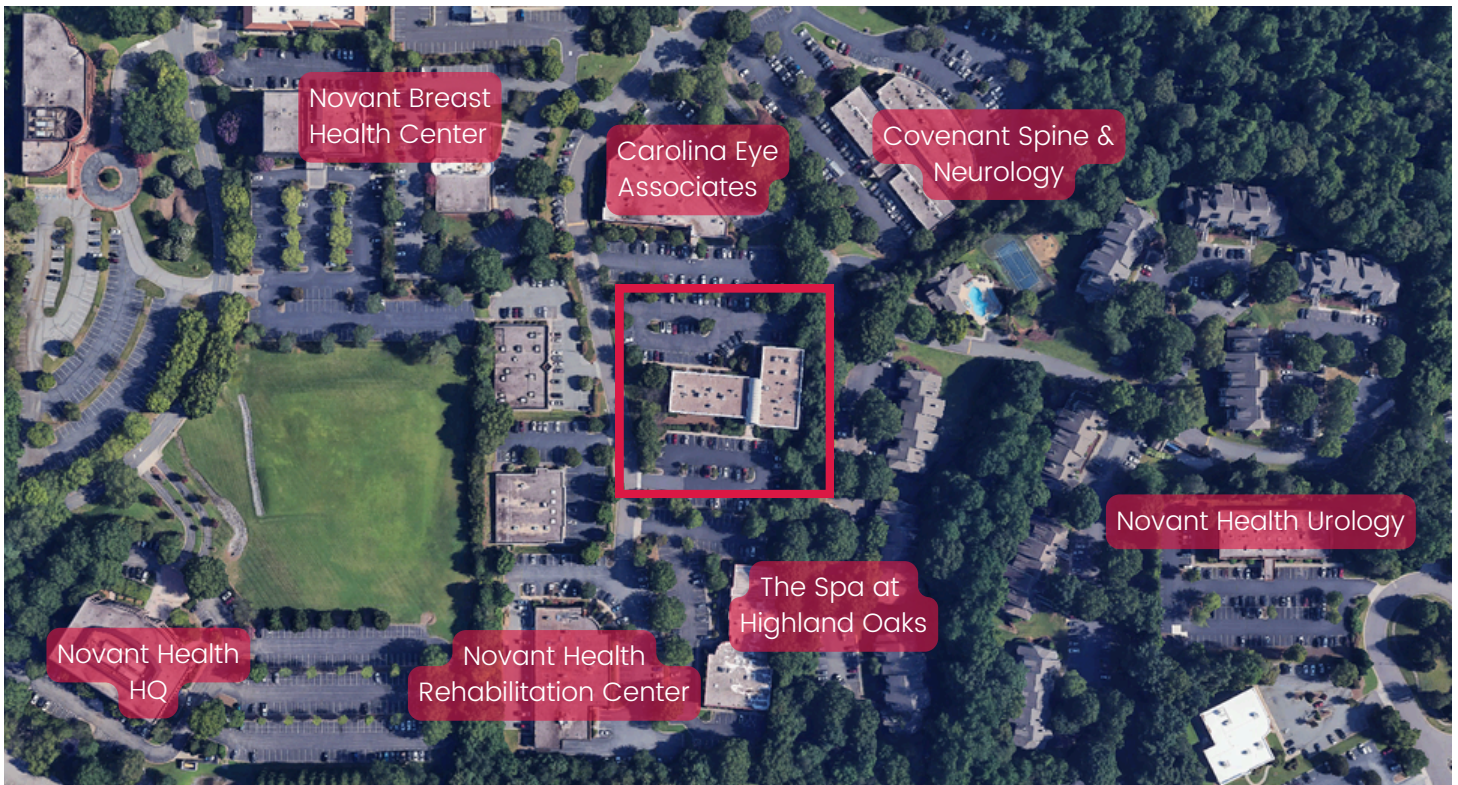
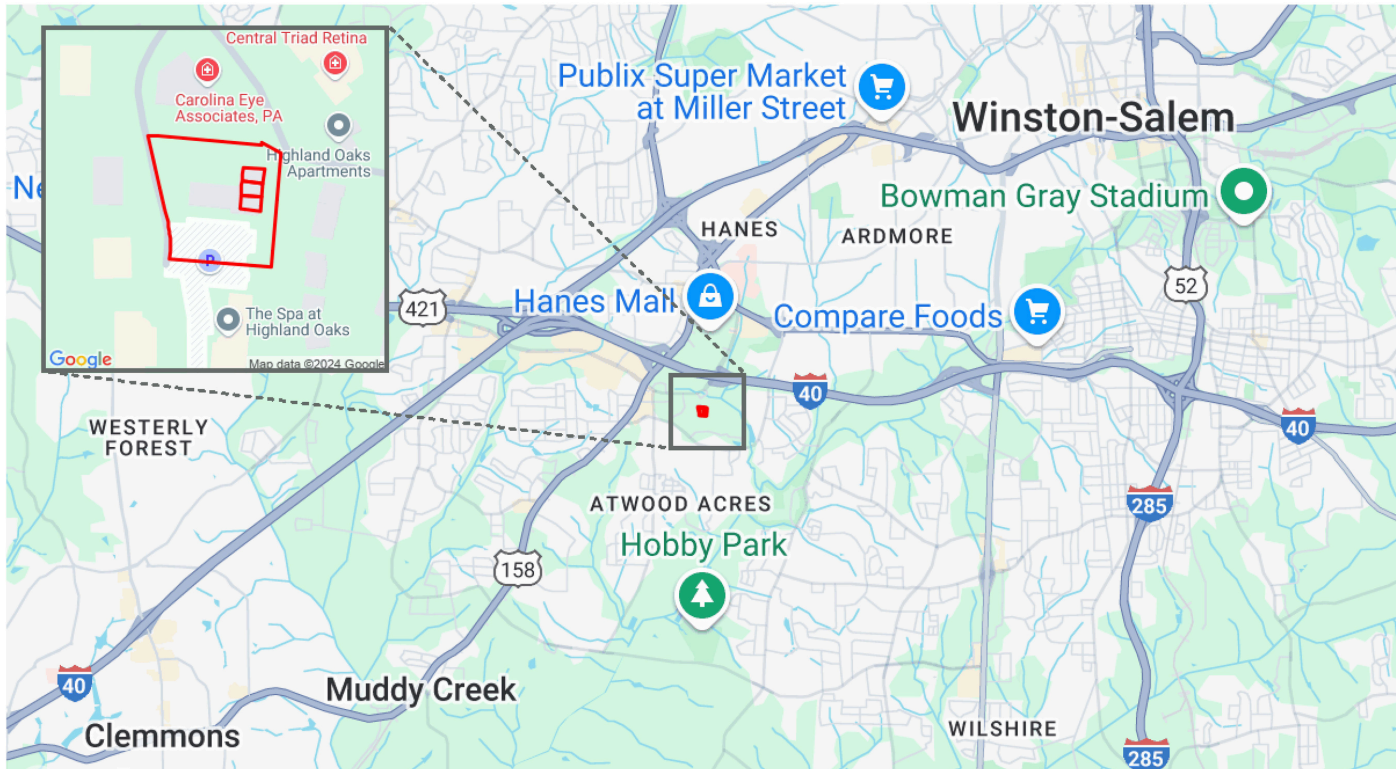
1080 West Fourth Street, Winston-Salem, NC



www.ChristopherCommercialINC.com

**Christopher
Commercial**
COMMERCIAL REAL ESTATE

MAPS



1080 West Fourth Street, Winston-Salem, NC



www.ChristopherCommercialNC.com

**Christopher
Commercial**
COMMERCIAL REAL ESTATE