



# For Lease

Medical Office Space Available  
16902 Southwest Fwy  
Sugar Land, TX 77479

# Availability

## Building Features

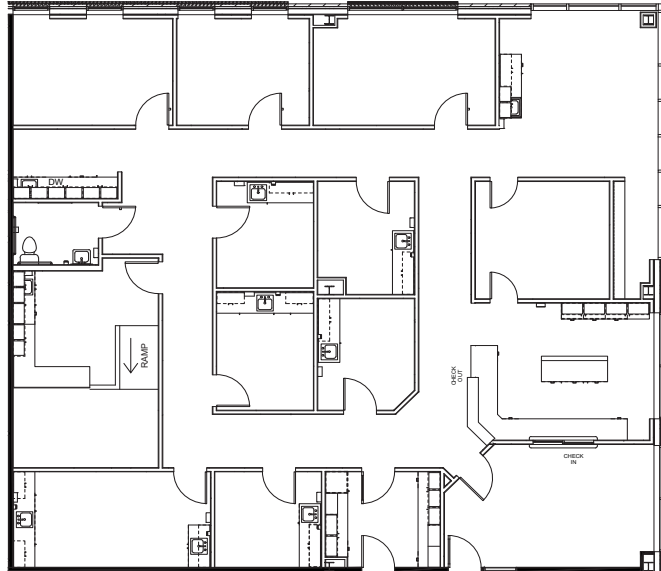
- Adjacent to Memorial Hermann Surgical Hospital
- Surface lot parking
- Covered drop off

## Suite 200 | 3,607 SF

Available 01/01/2026

### Suite Features

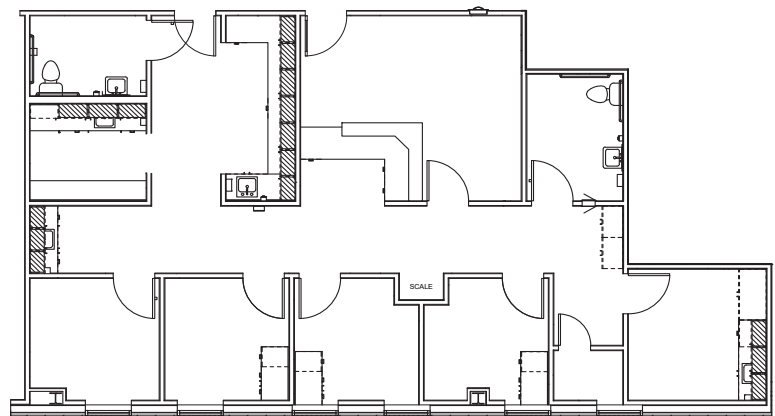
- FORMER ENT PRACTICE
- Move-in ready



## Suite 208 | 1,555 SF

### Suite Features

- NEWLY RENOVATED
- Move-in ready



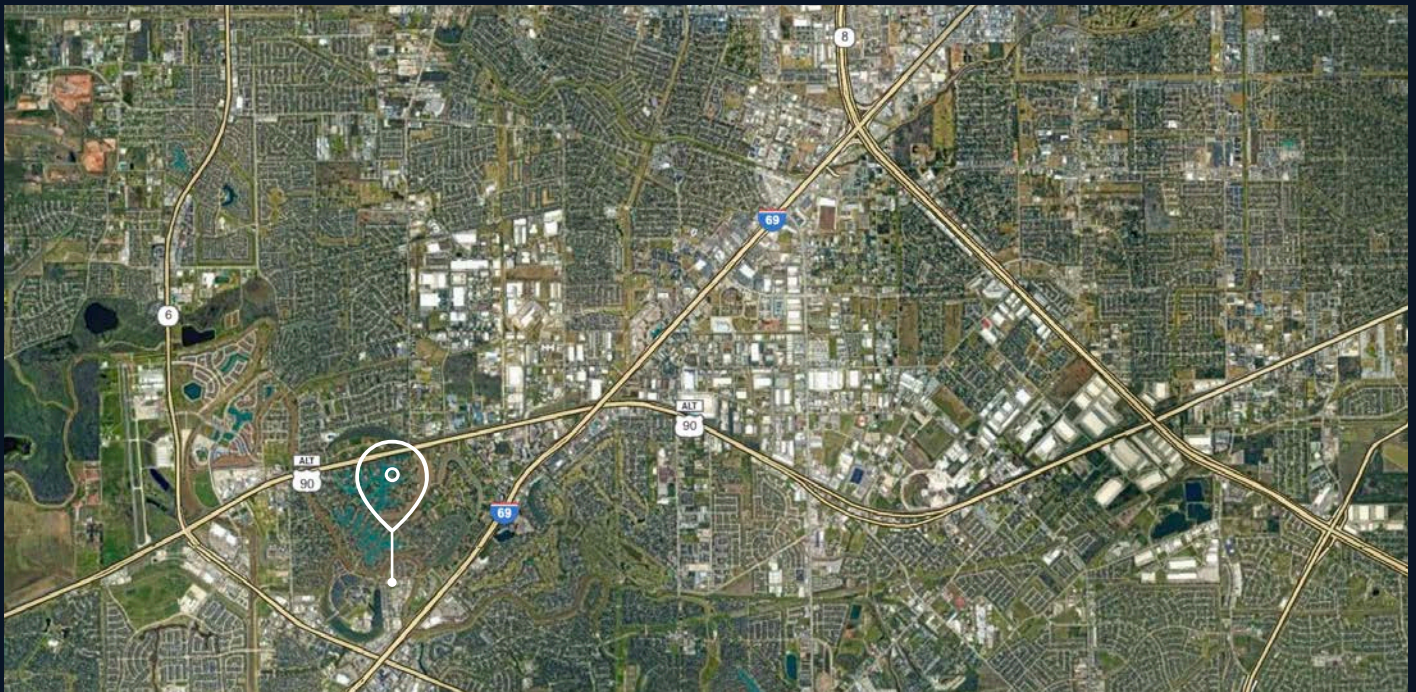
# Suite 208





## Location

16902 Southwest Fwy | Sugar Land, TX 77479



- Corner of US 59 Frontage Rd and Sweetwater Blvd
- Easy access to Grand Parkway SH-99, Hwy 6 and Hwy 90

**Contact broker for pricing:**

**Madeline Cleary**

[madeline.cleary@jll.com](mailto:madeline.cleary@jll.com)

+1 713 888 4007