



**KWILL**  
REAL ESTATE

POWERED BY KWILL MERCHANT ADVISORS

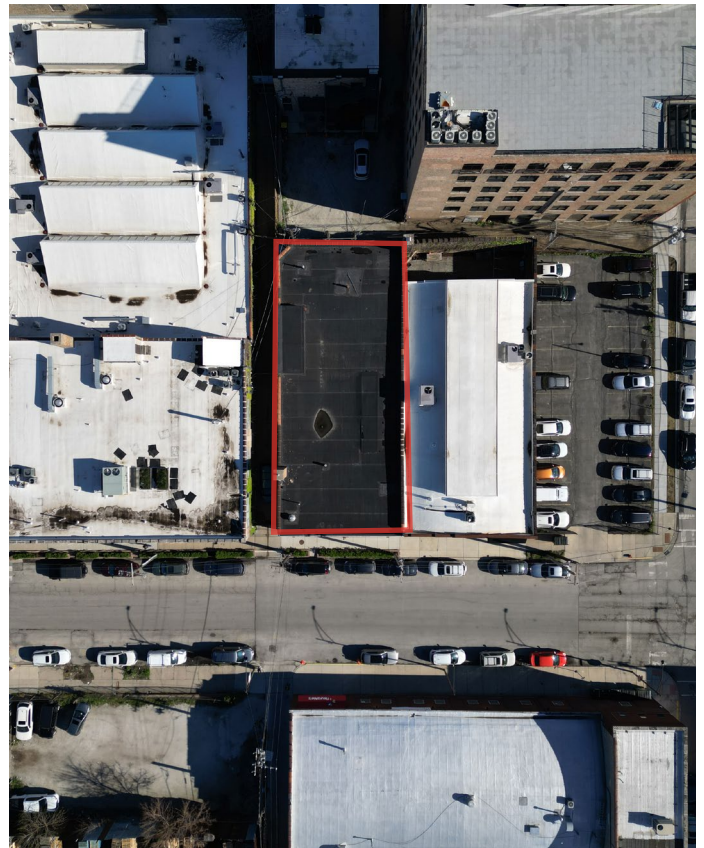
## FOR LEASE 1510 W FULTON CHICAGO, IL

### PROPERTY HIGHLIGHTS

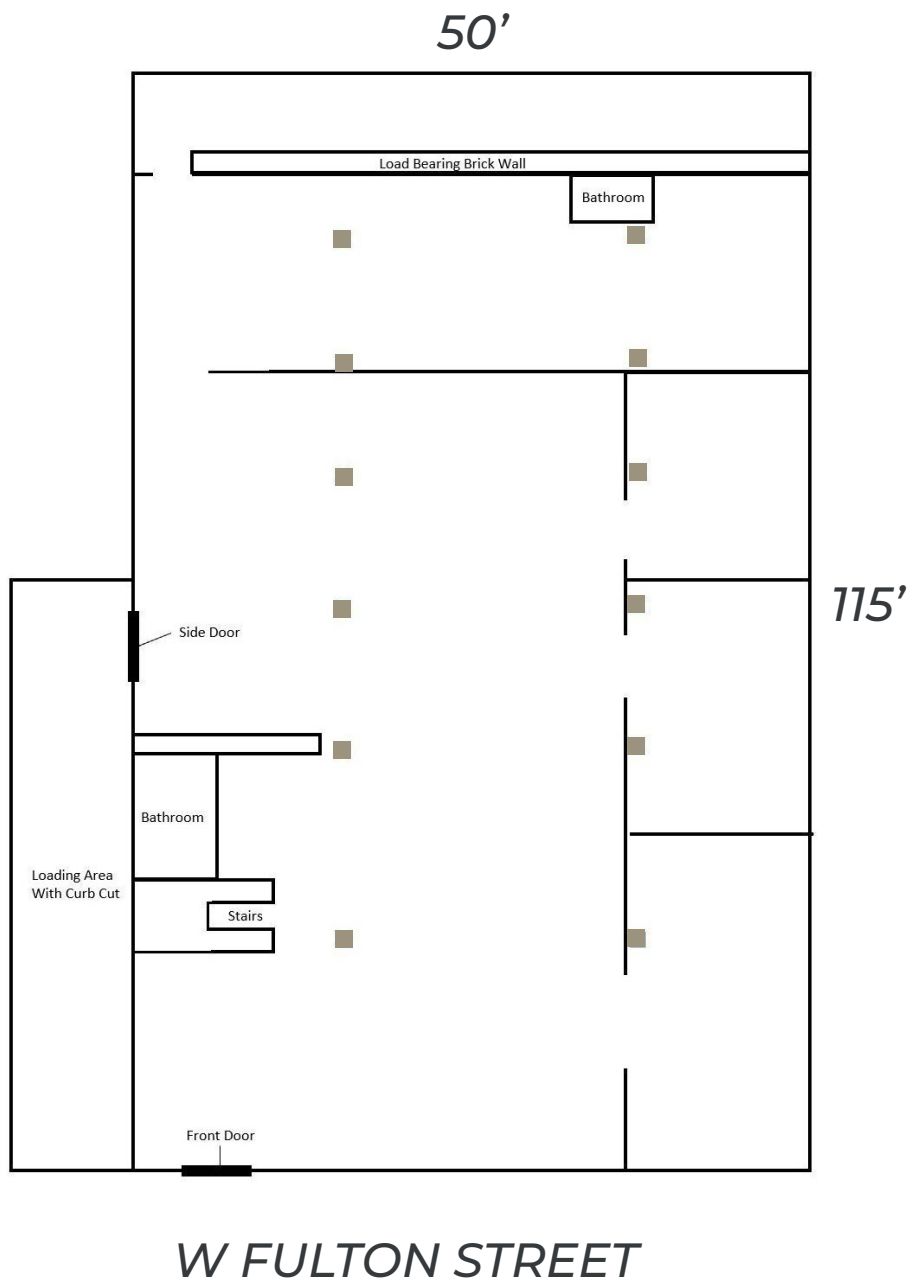
- Single Story Building
- Zoning: PMD-4B
- 5,750 SF
- 11' Clear Height
- Electrical: 1,000amp/480v 3p Heavy
- Lighting: Track LED Lighting
- Loading: Oversized door with access through private alley with curb cut for loading
- Free Street Parking
- Signage: Direct Exposure to Fulton St
- Light Distribution/Industrial, Flex/Office Space, Restaurant/ Retail uses.



# INTERIOR & EXTERIOR



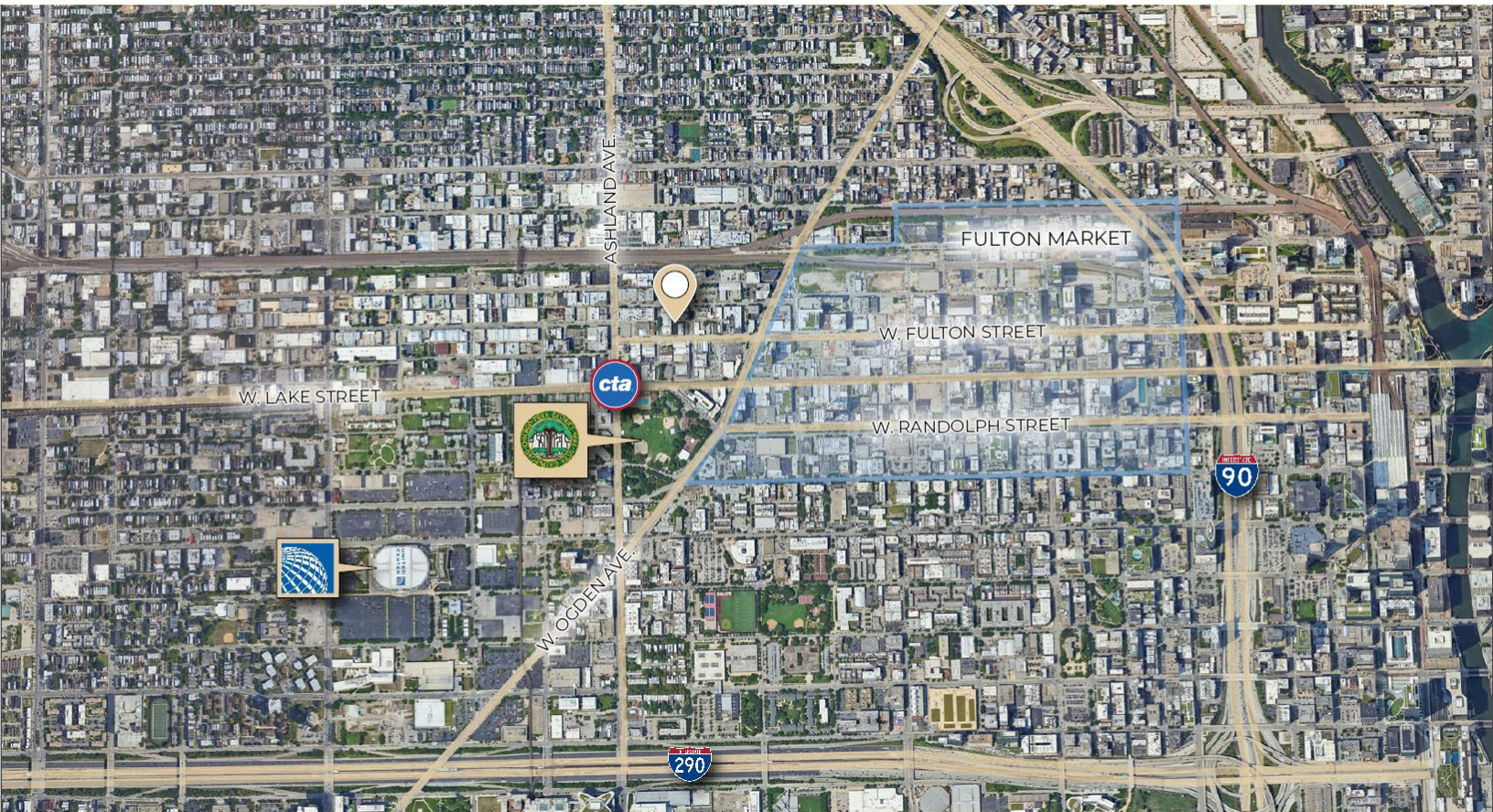
# PROPERTY LAYOUT



# 1510 W FULTON

**KWILL**  
REAL ESTATE

POWERED BY KWILL MERCHANT ADVISORS



## CLOSE PROXIMITY TO

FULTON MARKET

RANDOLPH STREET

ASHLAND CTA STOP

INTERSTATE 290

FULTON STREET

LAKE STREET

UNION PARK

INTERSTATE 90

OGDEN AVE

ASHLAND AVE

UNITED CENTER

## CALL FOR LEASE RATE GUIDANCE

MATT KNAFEL  
(317) 385-9808  
mknafel@kwilladvisors.com

MARCO FEDEROW  
(312) 805-5626  
mfederow@kwilladvisors.com

[www.kwilladvisors.com](http://www.kwilladvisors.com)