



Avison Young - Raleigh-Durham | 5440 Wade Park Boulevard, Suite 200 | Raleigh, NC 27607 | 919 785 3434

CLASS A OFFICE SPACE FOR LEASE

Europa Center

100 Europa Drive, Chapel Hill, NC 27517

**AVISON
YOUNG**

Property highlights

Overview

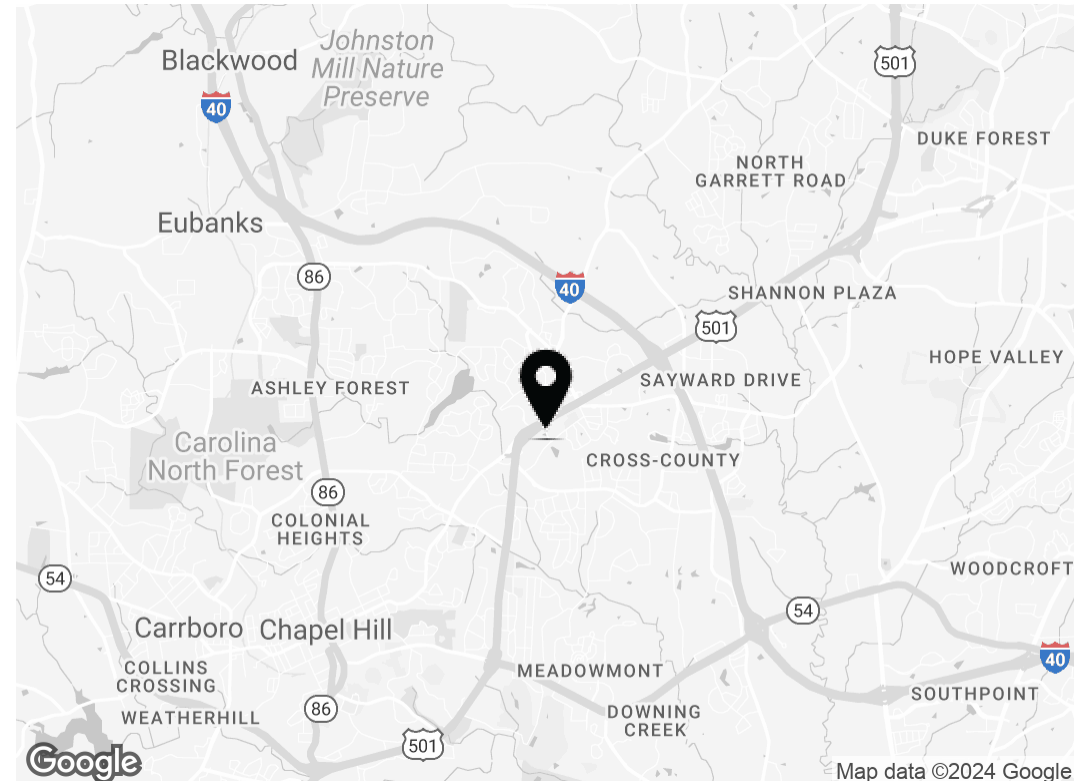
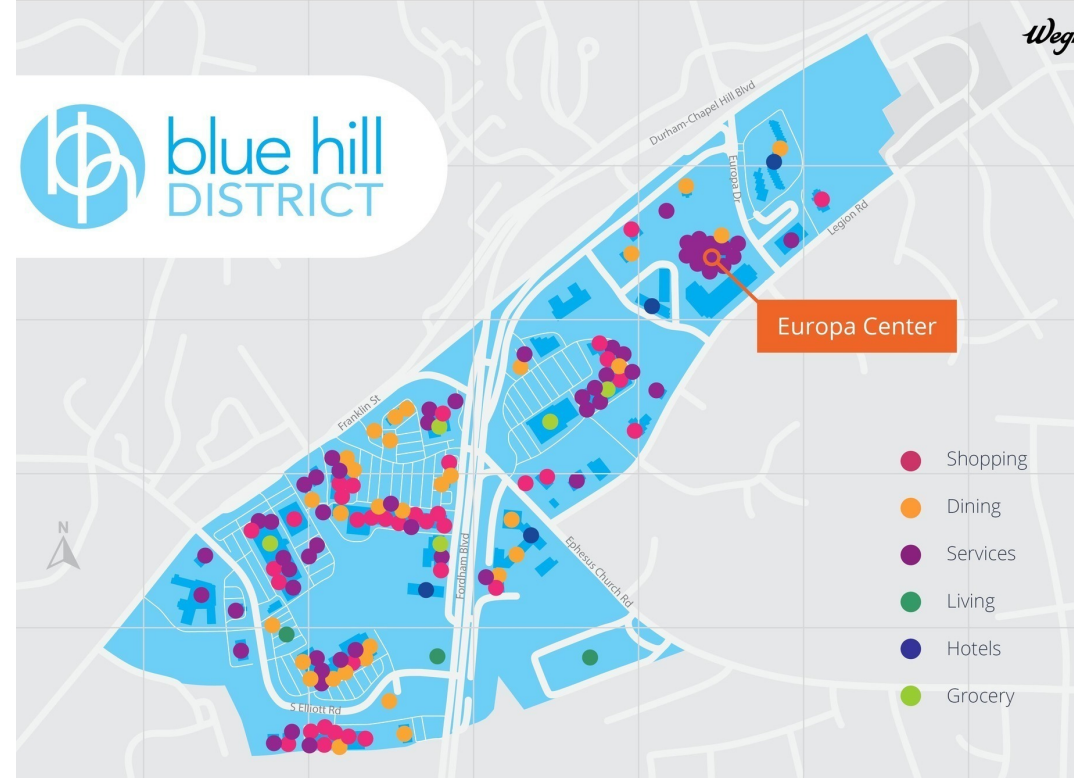
The Europa Center is a five-story, Class A office building located directly off Highway 15-501. It provides convenient access to Downtown Chapel Hill and Durham and is minutes from UNC at Chapel Hill and I-40. This business park offers tenants an array of amenities which include: an on-site café, fitness classes, loading dock with service elevator, tri-level covered parking deck, three-story atrium lobby, lush interior landscape, outside patio seating with wi-fi access, 24/7 building access, security and on-site property management and maintenance.

Summary

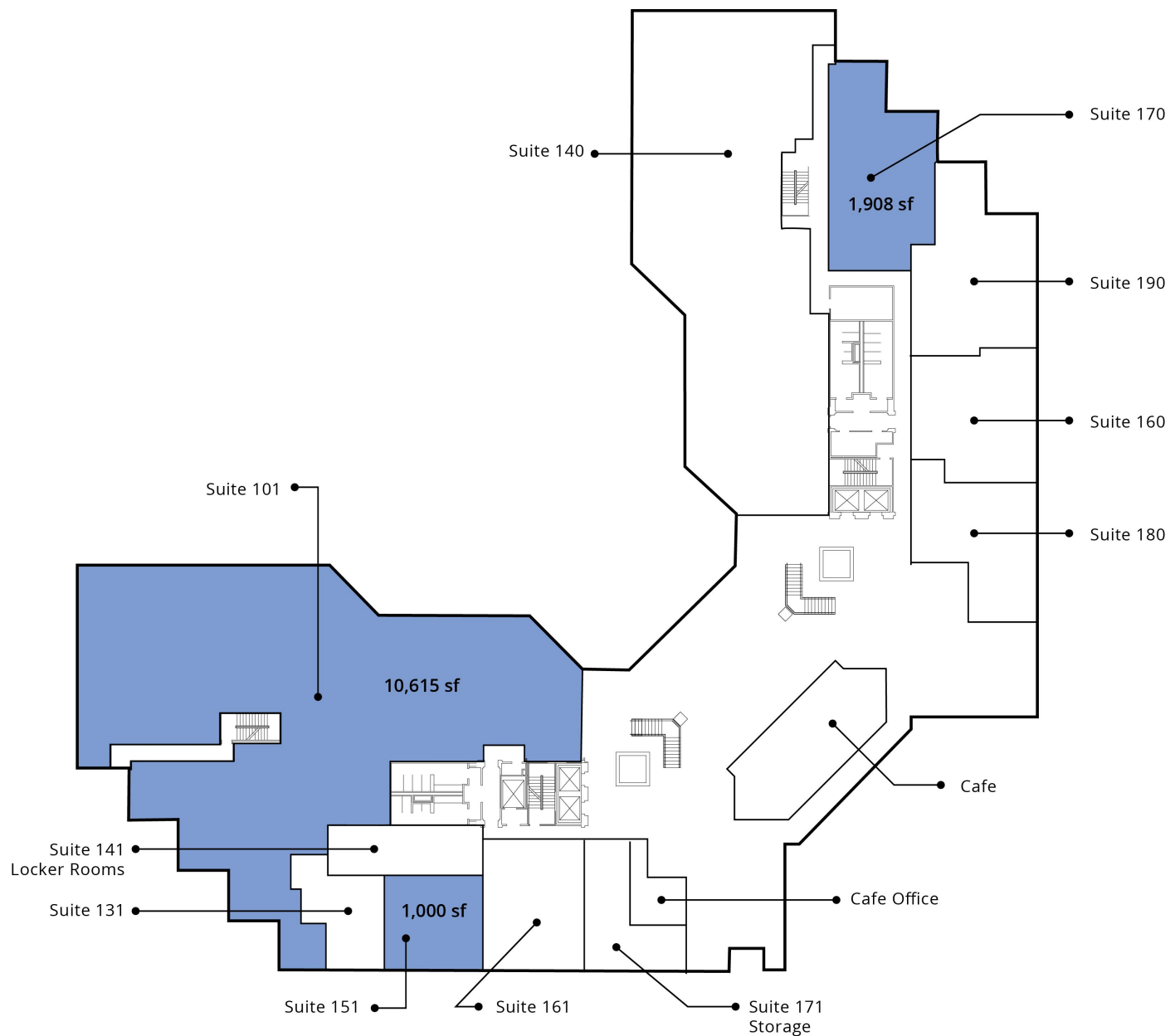
Lease rate:	\$24.95 SF/yr (Full Service)
Available:	1,000 - 13,567 sf
Building size:	183,164 sf

Location

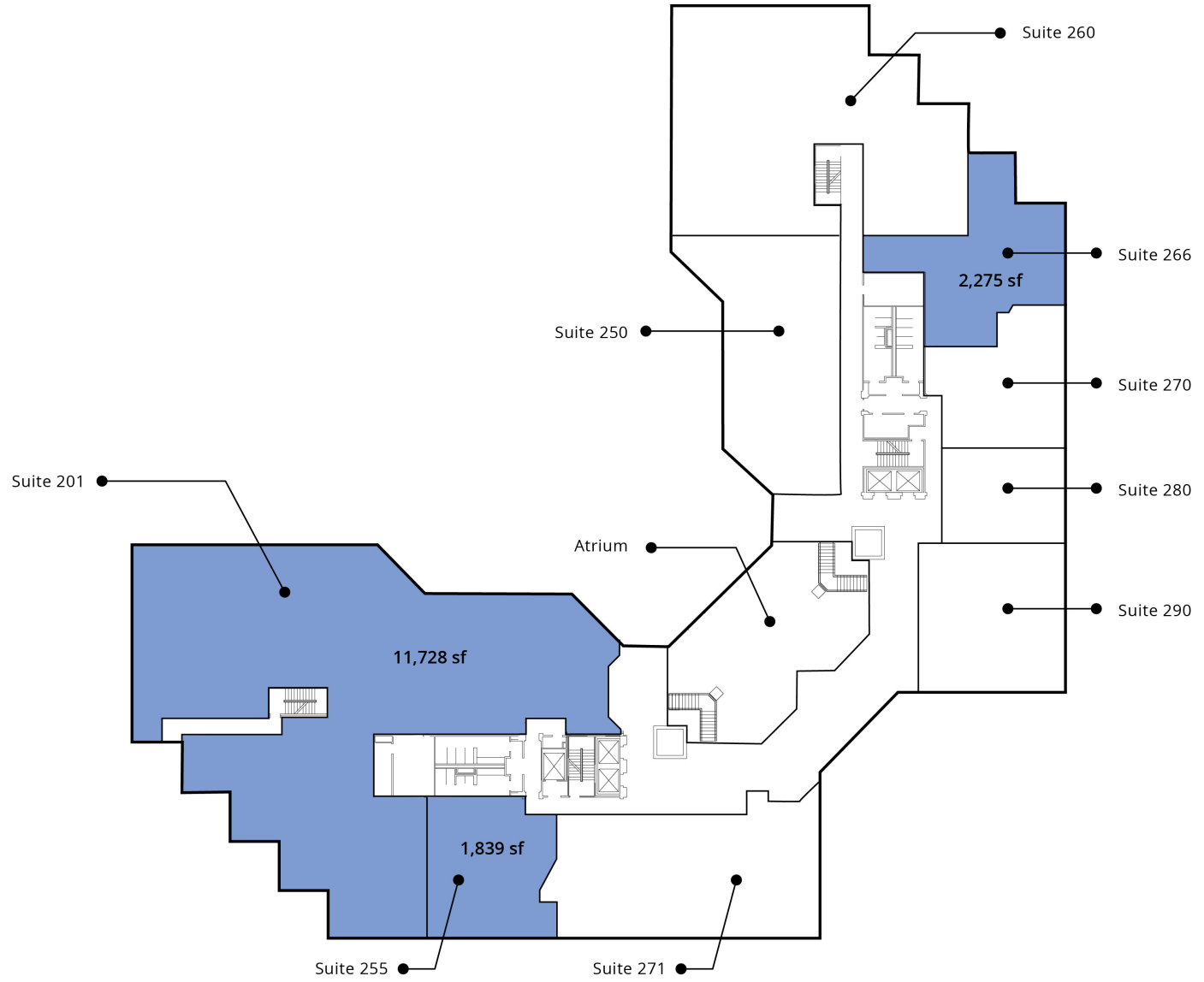
- Adjacent to The Sheraton Hotel
- 0.25 miles to Wegmans
- 3 miles to UNC at Chapel Hill
- 18 miles to the Raleigh-Durham International Airport



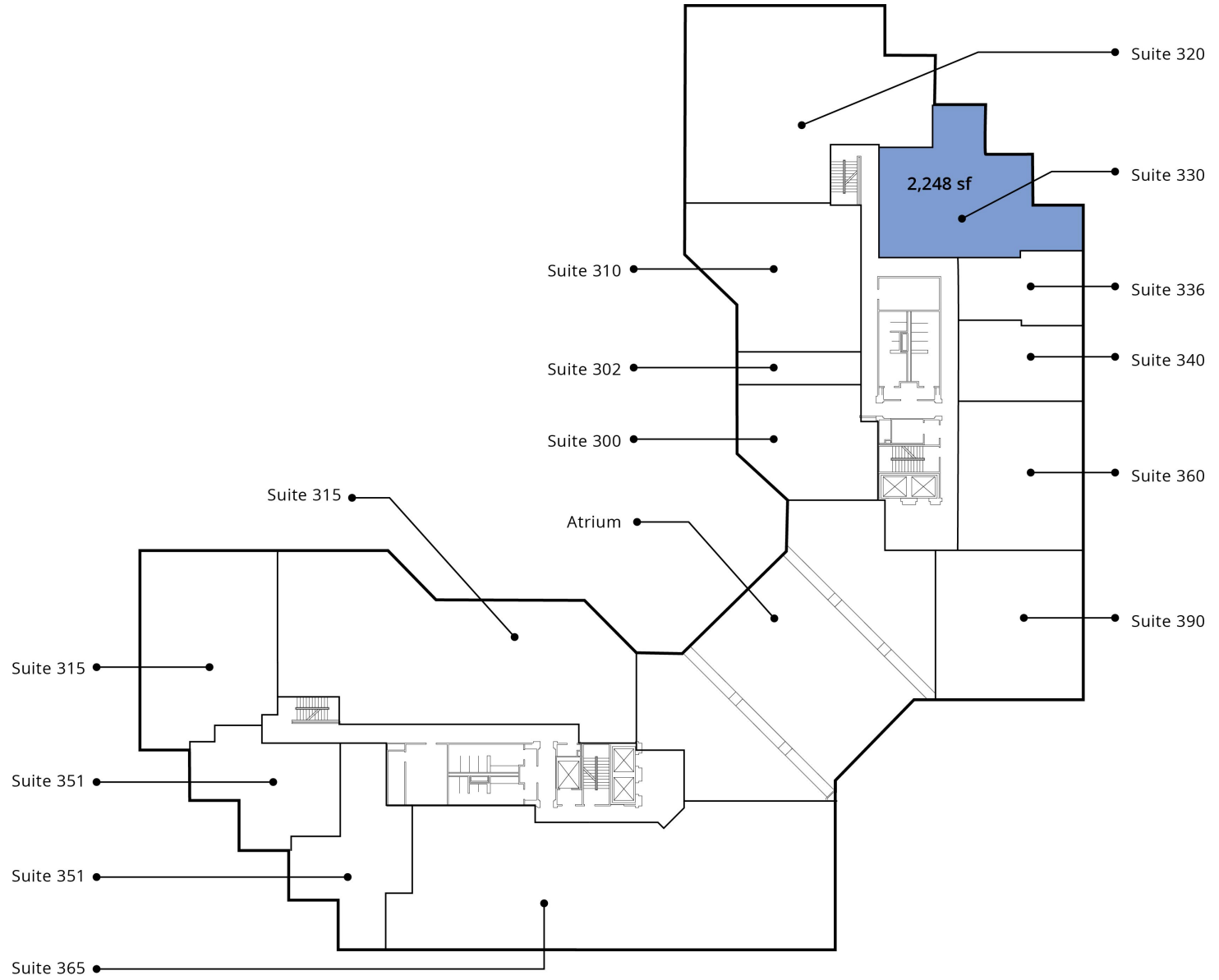
First floor plan



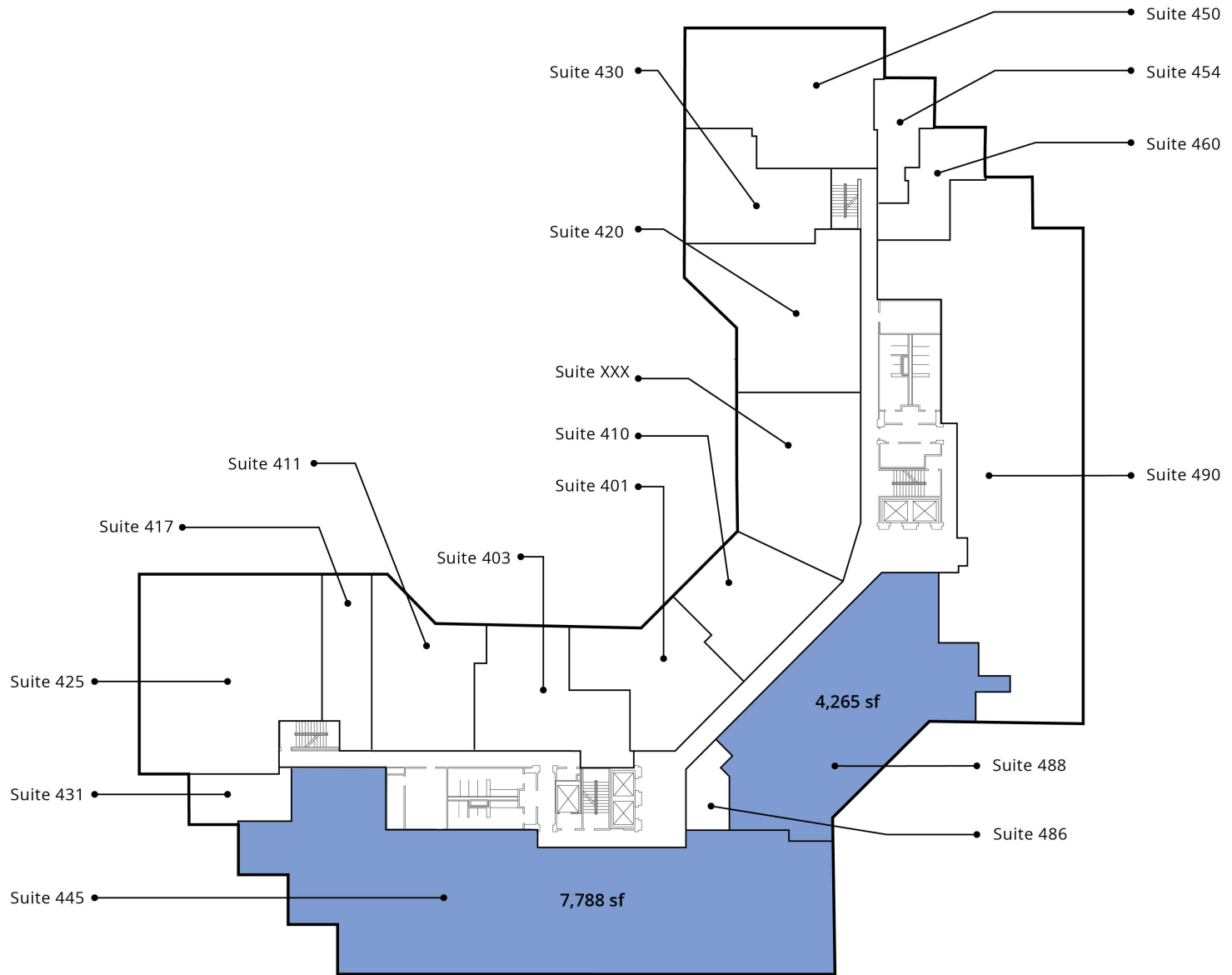
Second floor plan



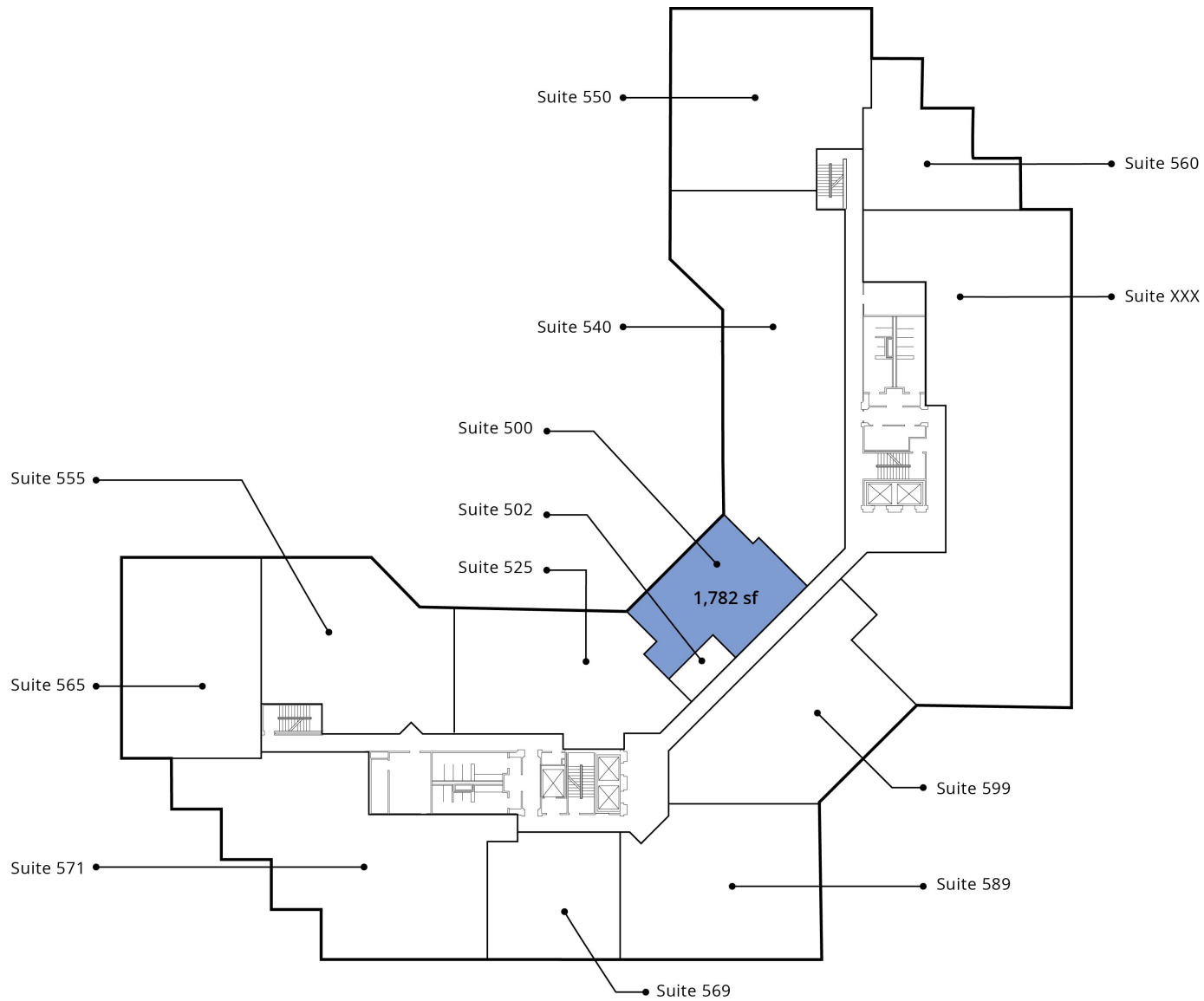
Third floor plan



Fourth floor plan



Fifth floor plan



AVISON
YOUNG



Amenities



Let's talk.

Gary Hill, CCIM

Senior Associate, Sales & Leasing

D 919 913 1116

gary.hill@avisonyoung.com



EUROPA  CENTER

Avison Young - Raleigh-Durham | 919 785 3434
5440 Wade Park Boulevard, Suite 200 | Raleigh, NC 27607

© 2024. Avison Young - Raleigh-Durham. Information contained herein was obtained from sources deemed reliable and, while thought to be correct, have not been verified. Avison Young - Raleigh-Durham does not guarantee the accuracy or completeness of the information presented, nor assumes any responsibility or liability for any errors or omissions therein.

**AVISON
YOUNG**
