



SOUTHTREE  
COMMERCIAL

REAL ESTATE

# FOR LEASE

105 GREENCASTLE ROAD, TYRONE, GA



## PROPERTY DETAILS

- Available Suite:
  - Suite C – 3,393 +/- RSF on 2nd Floor
  - Base Rent - \$16.00 PSF NNN
  - OPEX - \$4.25 PSF, includes water
- Situated at the front of the quiet Market Hill Office Park
- Conveniently located just north of Peachtree City in Tyrone
- Minutes from Kedron Shopping Center (countless amenities)
- 10-minute Drive to Town of Trilith and Trilith Studios
- Convenient access to SR 74 and I-85
- Co-Tenants:
  - Art of Life Chiropractic
  - Healthpoint Pediatrics

THIS INFORMATION HAS BEEN SECURED FROM SOURCES WE DEEM RELIABLE, BUT WE MAKE NO REPRESENTATIONS OR WARRANTIES, EXPRESSED OR IMPLIED AS TO THE ACCURACY OF THE INFORMATION.

**BARRY GARNER**  
VICE PRESIDENT  
770-294-4027  
BGARNER@STCOM.US

**SEAN RAWSON**  
VICE PRESIDENT  
678-920-1222  
SRAWSON@STCOM.US

 [STCOM.US](mailto:STCOM.US)

 770-631-0499

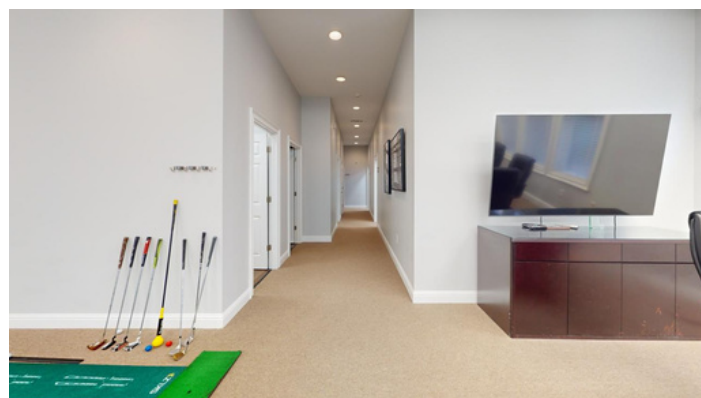
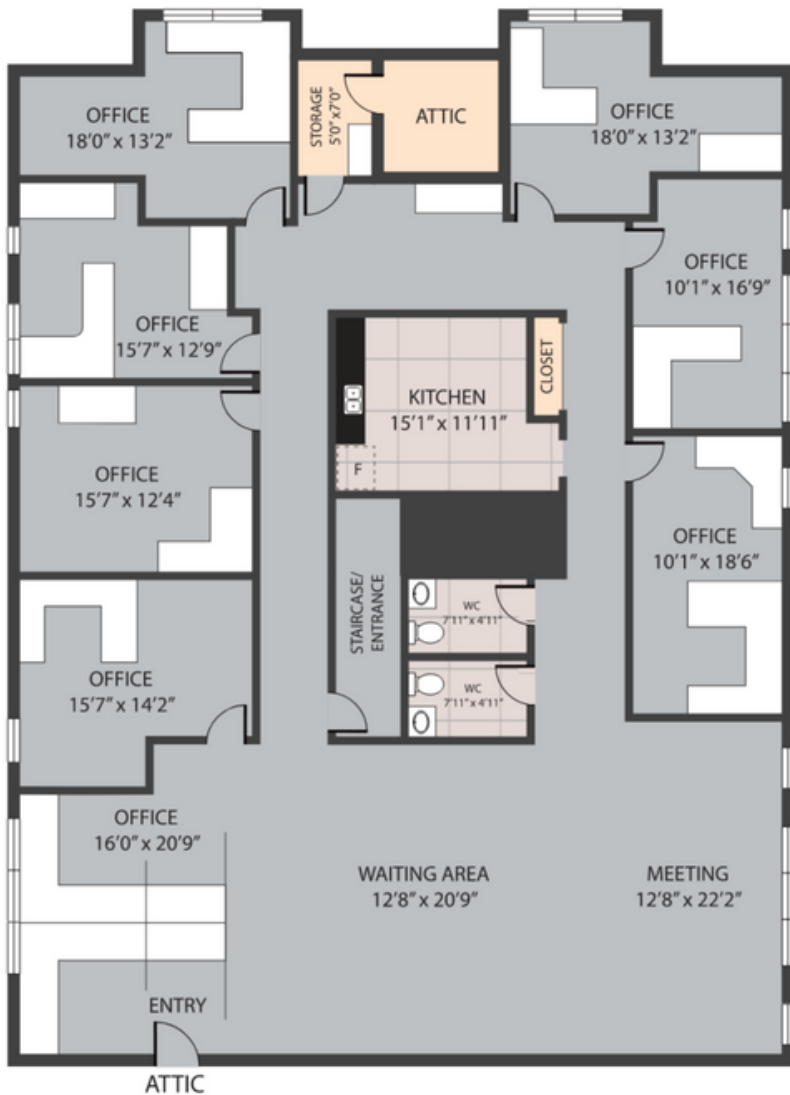
 201 PROSPECT PARK, SUITE A,  
PEACHTREE CITY, GA 30269



**SOUTHTREE**  
COMMERCIAL  
REAL ESTATE

# FLOOR PLAN

105 GREENCASTLE ROAD, TYRONE, GA



## SUITE HIGHLIGHTS

- 7 Private Offices
- Large open area for Waiting Room, Meeting Room, and/or Cubicle space
- Kitchen/Breakroom
- 2 Private Restrooms
- IT Room with additional storage area



SOUTHTREE  
COMMERCIAL  
REAL ESTATE

# AERIAL MAP

105 GREENCASTLE ROAD, TYRONE, GA

