

R&D/Manufacturing | For Sublease

CBRE

215 Devcon Dr

± 27,860 SF



Exclusively Listed By:

Mike Charters

Lic. 01733612

+1 408 453 7498

mike.charters@cbre.com

Geoff Gonzalez

Lic. 02038965

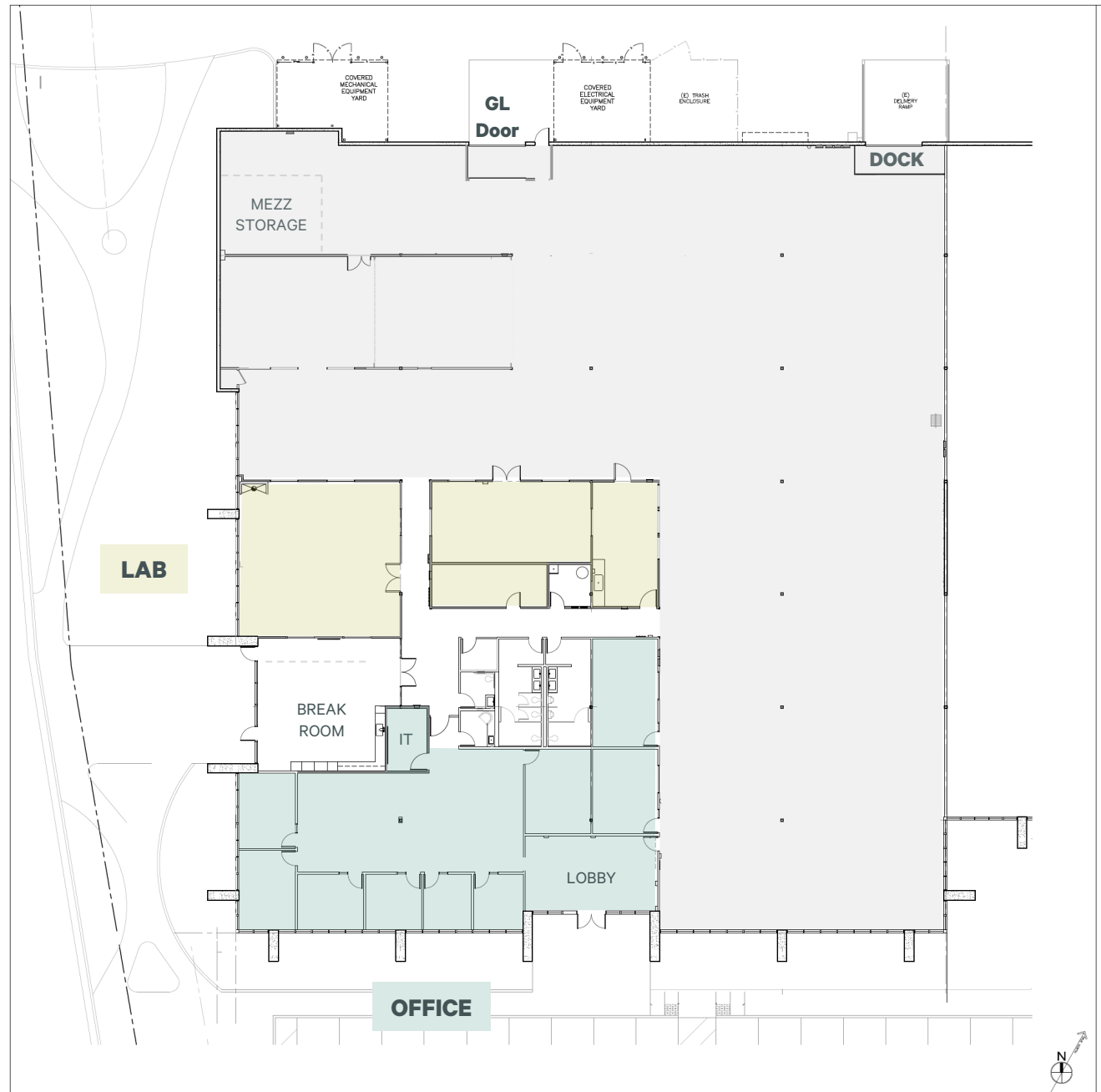
+1 925 683 5210

geoff.gonzalez@cbre.com

215 Devcon Dr
San Jose, CA

Floorplan

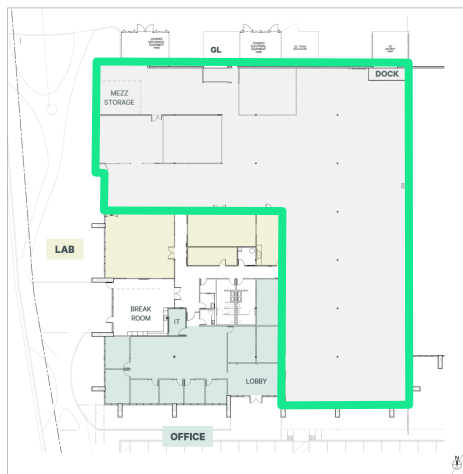
- ± 27,860 SF
- Market Ready Single Story R&D/Manufacturing
- 66% Warehouse / Open Balance Office + Lab
- 93 Parking Spots
- Building and Monument Signage
- 13.5' Clear Height, Wide Column Spacing
- Dock & Grade Level Loading
- LED Lighting
- 100% HVAC
- 1,000 amps @ 277/480V
- LED: March 31, 2030



Warehouse / Open Manufacturing

For Sublease

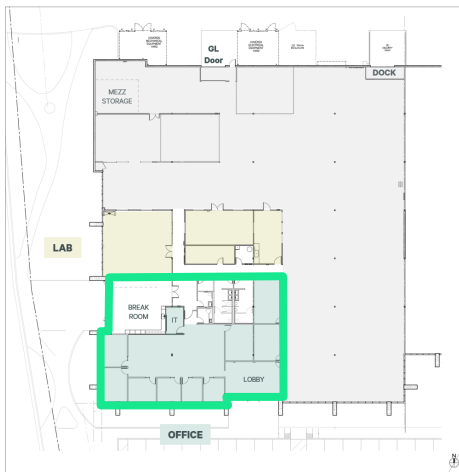
± 27,860 SF



Office

For Sublease

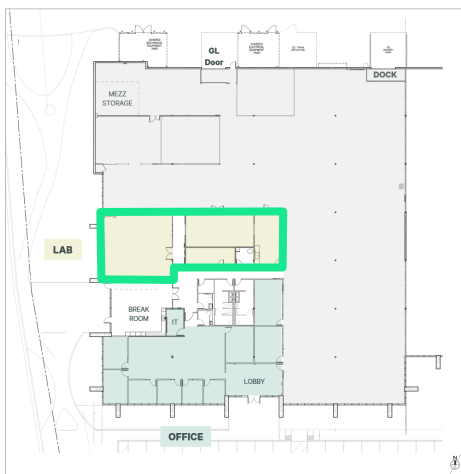
± 27,860 SF

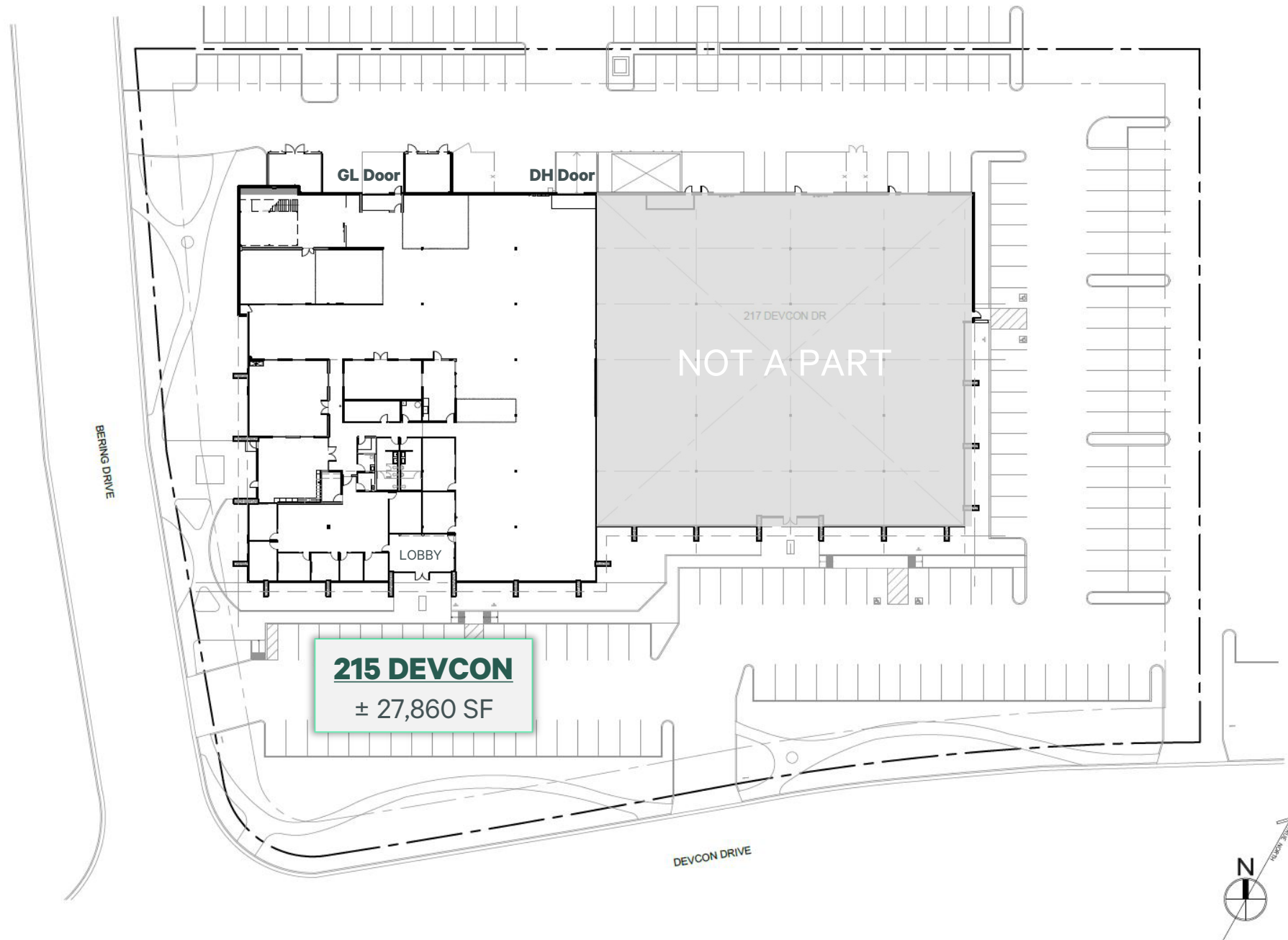


Labs

For Sublease

± 27,860 SF







- Easy Access to Hwy's 101, 880 & 87
- VTA Light Rail accessible
- Close Proximity to Mineta San Jose International Airport
- Central Silicon Valley Location

- Plentiful Retail and Hotel Options within 1 Mile:



SPROUTS
FARMERS MARKET

**SAM &
CURRY**

dishdash

CRUST



CITY SPORTS CLUB

HYATT



SONESTA
INTERNATIONAL HOTELS

215 Devcon Dr

San Jose, CA

For Sublease

± 27,860 SF



© 2025 CBRE, Inc. All rights reserved. This information has been obtained from sources believed reliable but has not been verified for accuracy or completeness. CBRE, Inc. makes no guarantee, representation or warranty and accepts no responsibility or liability as to the accuracy, completeness, or reliability of the information contained herein. You should conduct a careful, independent investigation of the property and verify all information. Any reliance on this information is solely at your own risk. CBRE and the CBRE logo are service marks of CBRE, Inc. All other marks displayed on this document are the property of their respective owners, and the use of such marks does not imply any affiliation with or endorsement of CBRE. Photos herein are the property of their respective owners. Use of these images without the express written consent of the owner is prohibited.

Exclusively Listed By:

Mike Charters

Lic. 01733612

+1 408 453 7498

mike.charters@cbre.com

Geoff Gonzalez

Lic. 02038965

+1 925 683 5210

geoff.gonzalez@cbre.com

CBRE