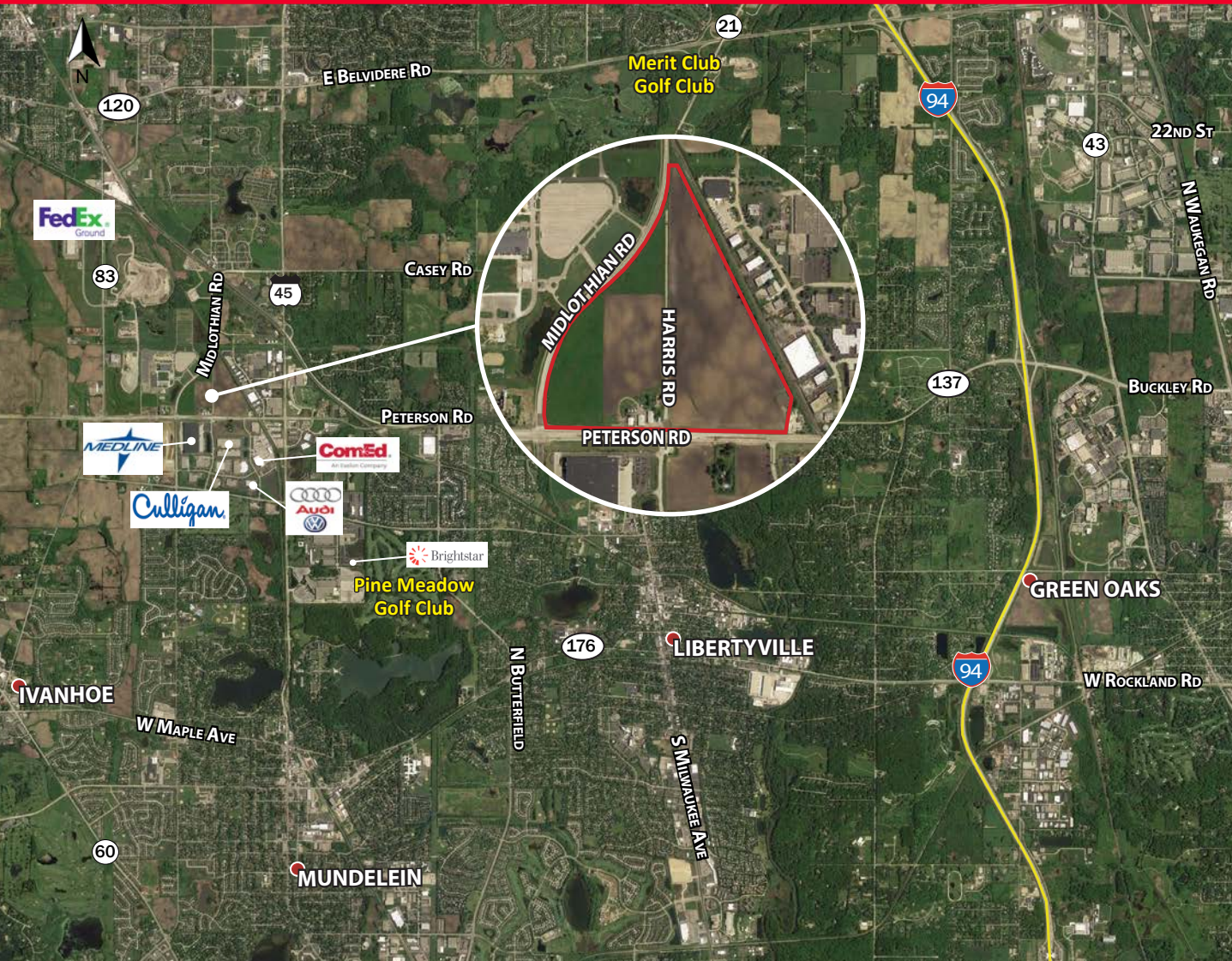


LIBERTYVILLE BUSINESS PARK

Libertyville, IL

Available | 5 - 82 Acres



Property Highlights:

- Up to 82 acres available
- Direct access to full interchange at I-94 & Route 137 (Buckley Road)
- Low Lake County taxes
- Corporate neighbors include Medline, Culligan, USG, and Brightstar
- Available for BTS or Outright Purchase
- Suitable for industrial, commercial, and retail
- Pricing subject to offer

Last Remaining Lake County In-Fill Site For Development or Built-To-Suit

For more information, please contact:

Keith Puritz, SIOR
Executive Director
847 720 1366
kieth.puritz@cushwake.com

Brett Kroner, SIOR
Executive Director
847 720 1367
brett.kroner@cushwake.com

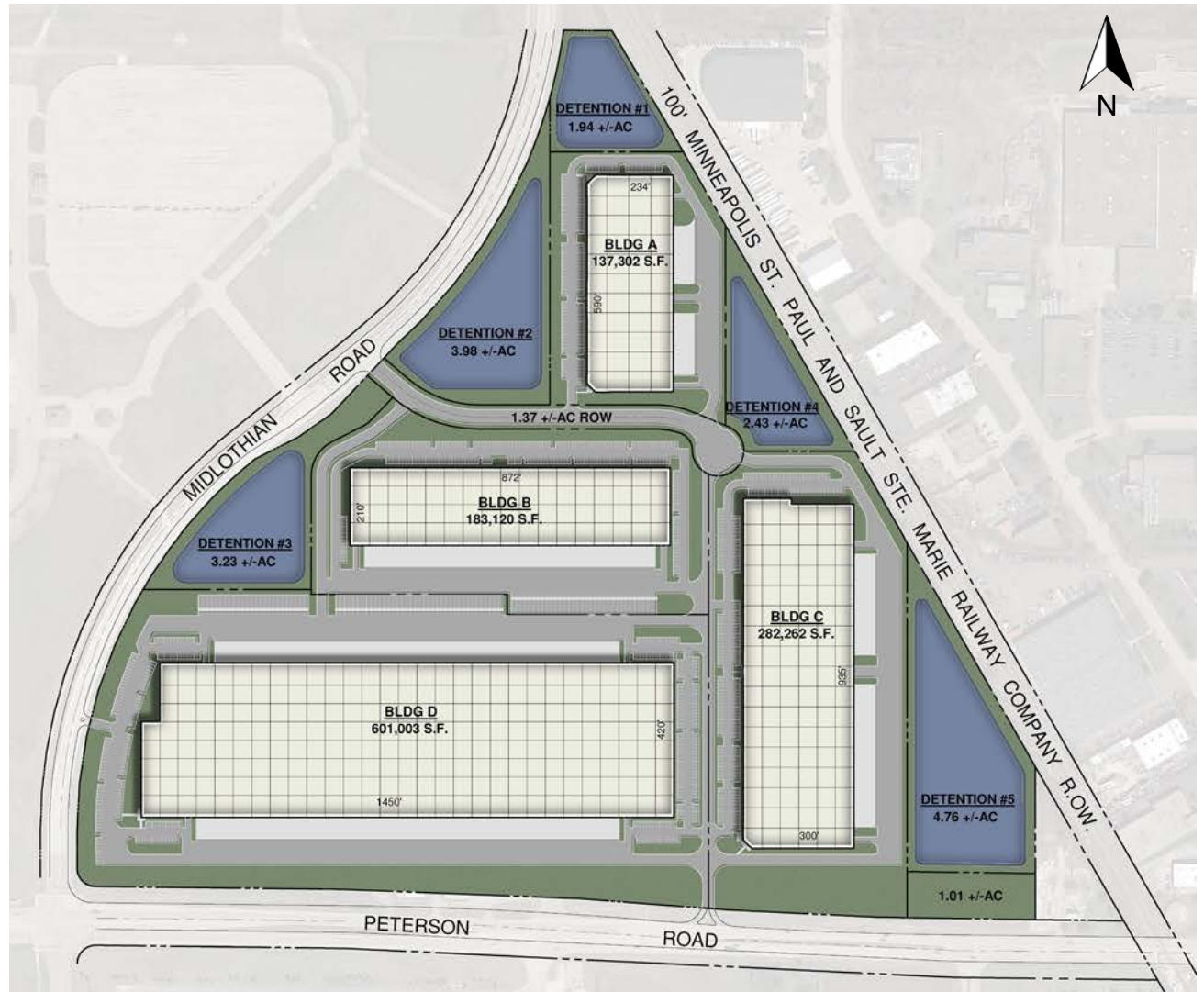
Eric Fischer
Managing Director
847 720 1369
eric.fischer@cushwake.com

Michael Scadron
Associate
847 720 1327
michael.scadron@cushwake.com

Marc Samuels
Associate
847 720 1368
marc.samuels@cushwake.com

Conceptual Development

TOTAL SITE AREA (±83.84 AC.)	±3,652,070 S.F.
TOTAL DETENTION SITE (±16.34 AC.)	±711,771 S.F.
SITES	
SITE AREA A (±7.38 AC.)	321,312 S.F.
BUILDING	137,302 S.F.
TRUCK DOCKS	25 DOCKS
DRIVE-IN DOORS	3 DOORS
CAR PARKING	130 STALLS
SITE AREA B (±11.85 AC.)	516,186 S.F.
BUILDING	183,120 S.F.
TRUCK DOCKS	58 DOCKS
DRIVE-IN DOORS	2 DOORS
TRAILERS STALLS	33 STALLS
CAR PARKING	208 STALLS
SITE AREA C (±15.09 AC.)	657,320 S.F.
BUILDING	282,262 S.F.
TRUCK DOCKS	48 DOCKS
DRIVE-IN DOORS	3 DOORS
CAR PARKING	202 STALLS
SITE AREA D (±30.80 AC.)	1,341,648 S.F.
BUILDING	601,003 S.F.
TRUCK DOCKS	164 DOCKS
DRIVE-IN DOORS	4 DOORS
TRAILERS STALLS	63 STALLS
CAR PARKING	287 STALLS
OTHER SITE AREAS (±2.38 AC.)	103,673 S.F.



Site can accommodate a single building of up to 800,000 SF.

For more information, please contact:

Keith Puritz, SIOR
Executive Director
847 720 1366
kieth.puritz@cushwake.com

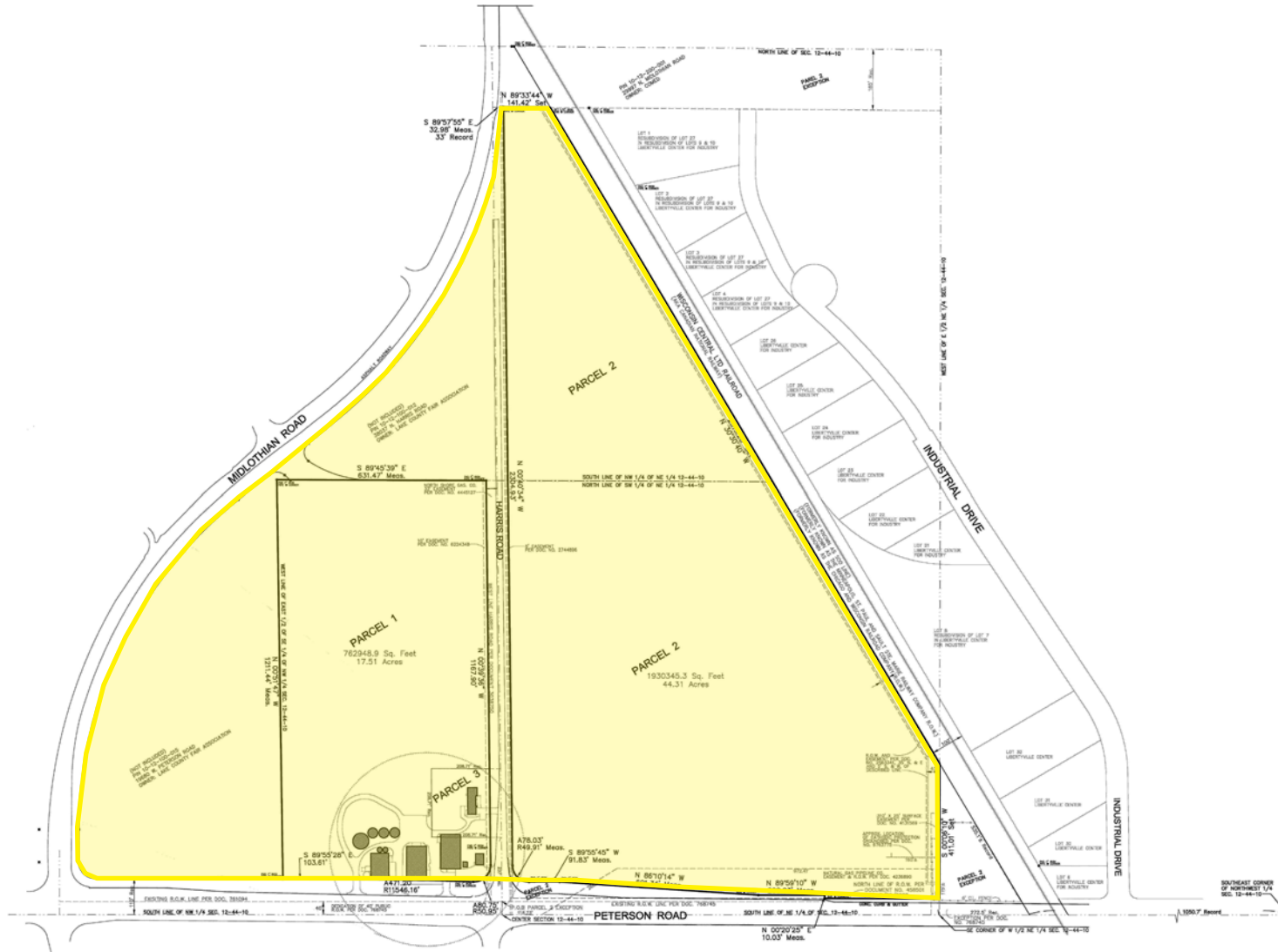
Brett Kroner, SIOR
Executive Director
847 720 1367
brett.kroner@cushwake.com

Eric Fischer
Managing Director
847 720 1369
eric.fischer@cushwake.com

Michael Scadron
Associate
847 720 1327
michael.scadron@cushwake.com

Marc Samuels
Associate
847 720 1368
marc.samuels@cushwake.com

Survey



For more information, please contact:

Keith Puritz, SIOR
Executive Director
847 720 1366
kieth.puritz@cushwake.com

Brett Kroner, SIOR
Executive Director
847 720 1367
brett.kroner@cushwake.com

Eric Fischer
Managing Director
847 720 1369
eric.fischer@cushwake.com

Michael Scadron
Associate
847 720 1327
michael.scadron@cushwake.com

Marc Samuels
Associate
847 720 1368
marc.samuels@cushwake.com